



07

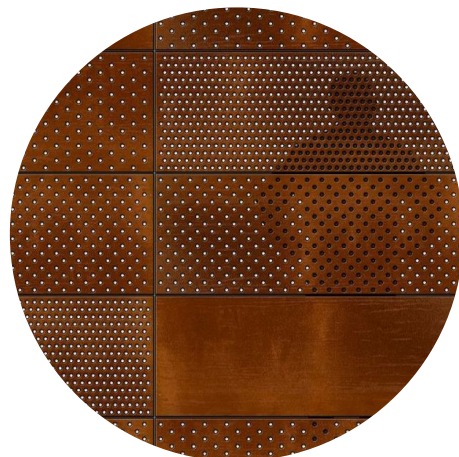
Facade Strategy

07 Facade Strategy

01 Facade Expression and Habitable Space



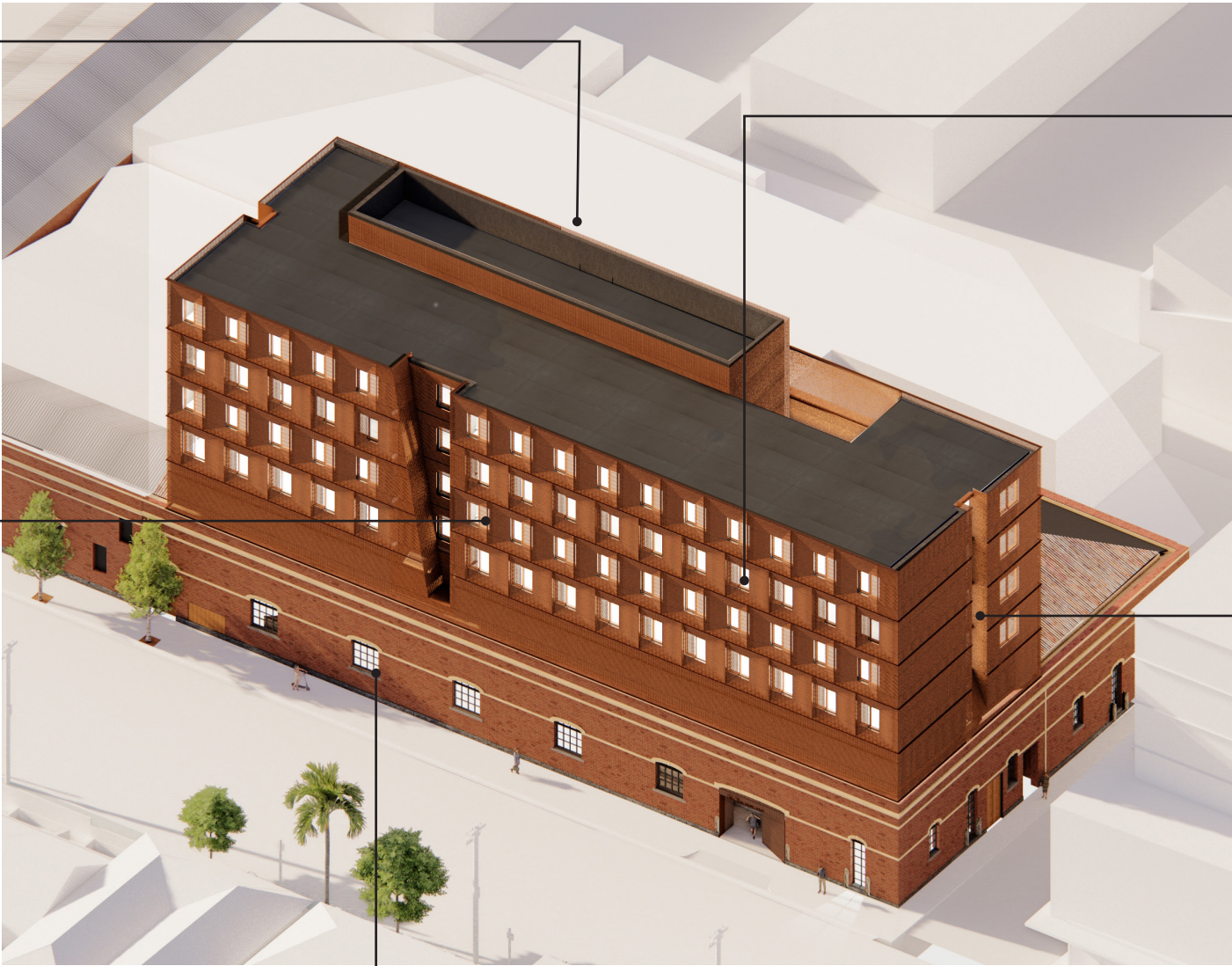
Communal Outdoor Podium Terrace (Level 3)
— Generous north facing landscaped terrace with ample boundary setback maximise daylight.



Facade Expression 01
— Perforated metal rain screen facade
— Panels varied in articulation and size of perforation to create subtle variety in form and shadow across the facade.



Facade Expression 02
— Restored original bi-chromatic brick facade and windows



Reduced Shell Depth
— Better Daylight Access to Rooms



Daylight to End of Corridors
— Amenity Considerations
— Street Visual Connections

07 Facade Strategy

02 Reference Imagery & Detail

Facade Design

The facade has been purposefully designed to maintain a neutral and uniform aesthetic, drawing inspiration from an industrial design language that respectfully references the historical use of the existing heritage building without overpowering it.

A continuous rainscreen veil of perforated steel panels is offset from the solid facade, creating depth and articulation. Horizontal dividing metal blades are integrated at each level, echoing the linearity of the heritage mouldings on the existing building below.

This cladding system is applied consistently across the new facade, symbolically reflecting the site’s industrial heritage while subtly emphasizing the building’s geometric shifts.

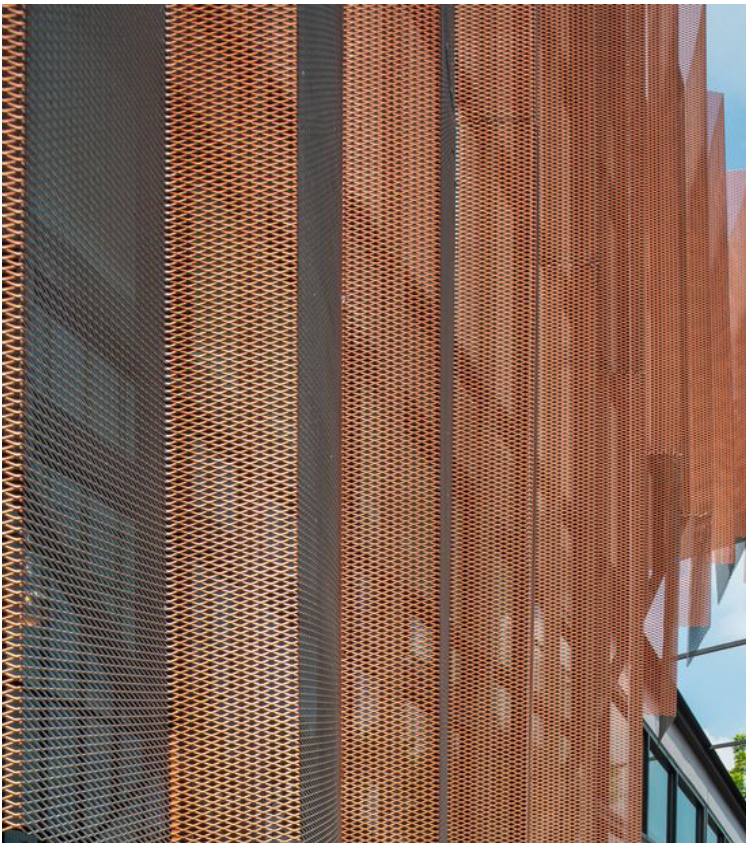
Daytime Activation

A combination of straight and folded perforated metal panels has been strategically used to interact with natural light, creating dynamic shadowing effects that animate the facade across multiple planes.

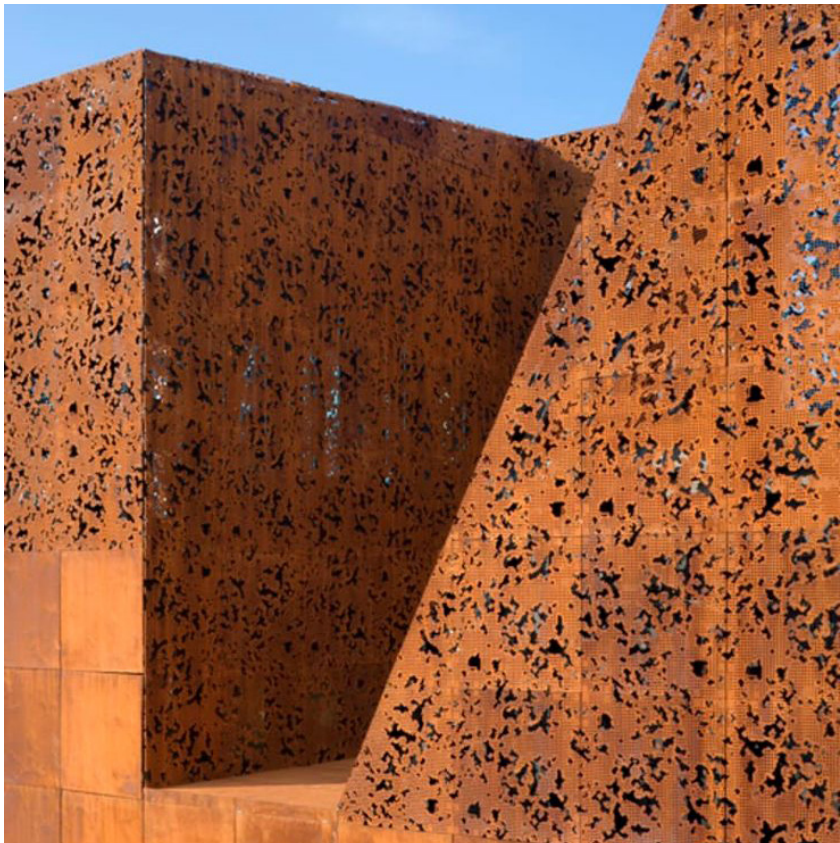
Nighttime Activation

The offset cladding enhances nighttime activation by allowing internal lighting to filter through, effectively backlighting the facade. This interplay of light and shadow transforms the building’s appearance, adding visual interest after dark

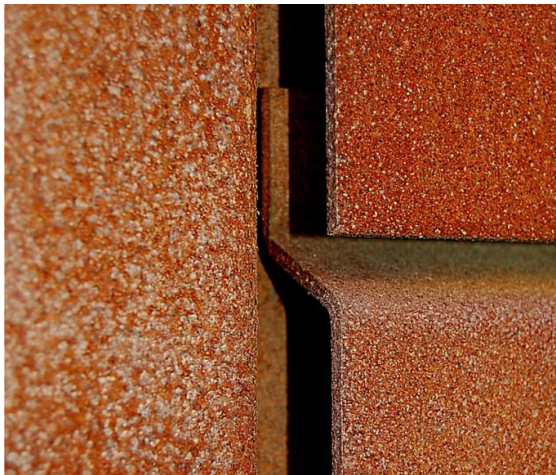
Additionally, the facade design incorporates varying perforation sizes to create nuanced visual permeability and a subtle colour gradation, harmonizing with the heritage brick facade below while reinforcing the precinct’s industrial character.



A continuous rainscreen veil



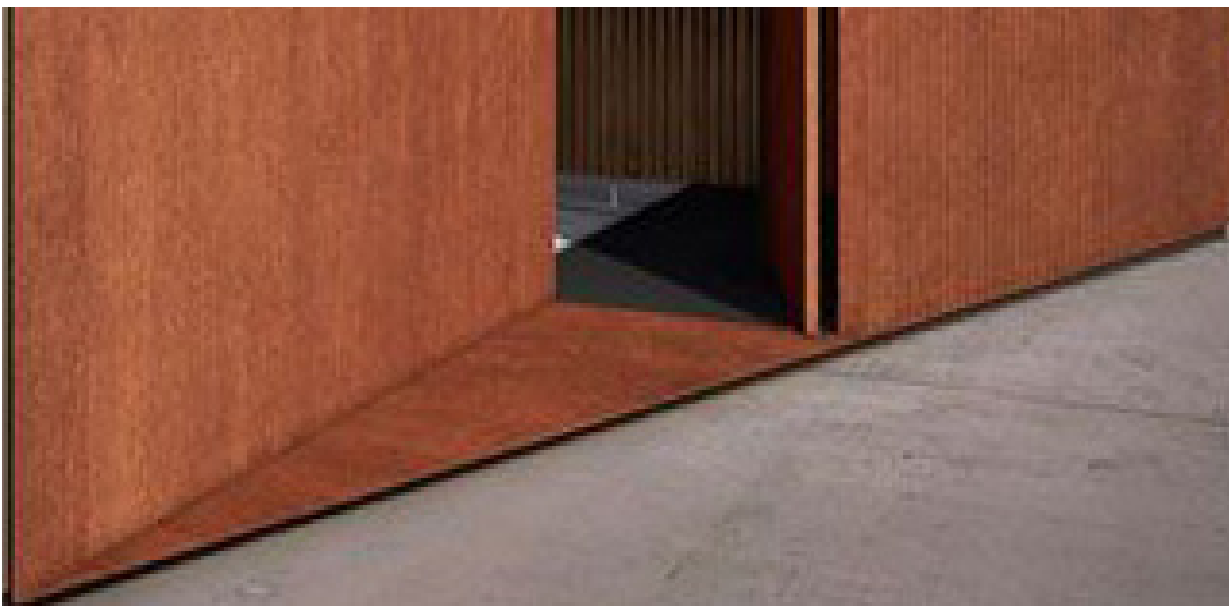
The veil permits a cohesive resolution of geometric shifts in form



Industrial language



Expression of individual rooms



Folded perforated metal panels creating dynamic shadowing effects



07 Facade Strategy

04 Reference Imagery

The interior design of the building will highlight the preservation and spectacular volume of the ‘main hall’ with intact roof, lining and trusses.

The palette of materials and finishes will be kept to a minimum. The use of natural concrete and perforated steel will reflect the industrial nature of an engine house.



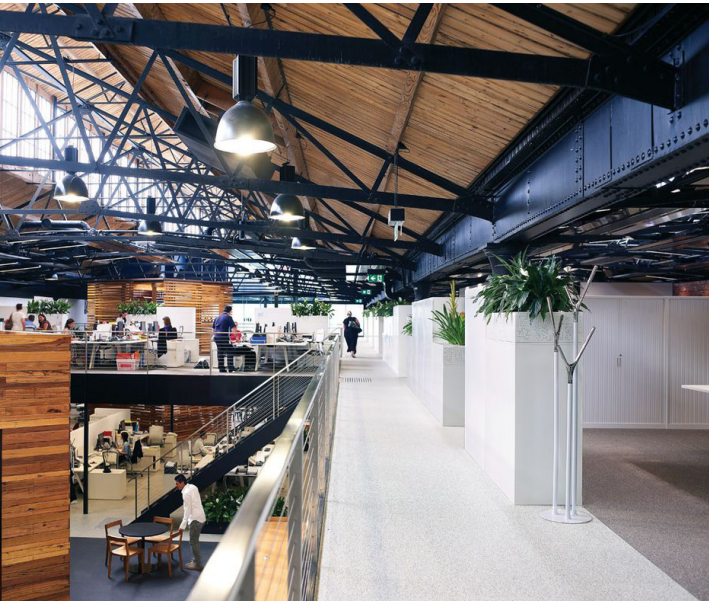
Natural Light
CS House, BRAZIL - Memola Estudio



Natural Light and Landscape blend into internal atrium
Sanders Place, Richmond, VIC - NMBW



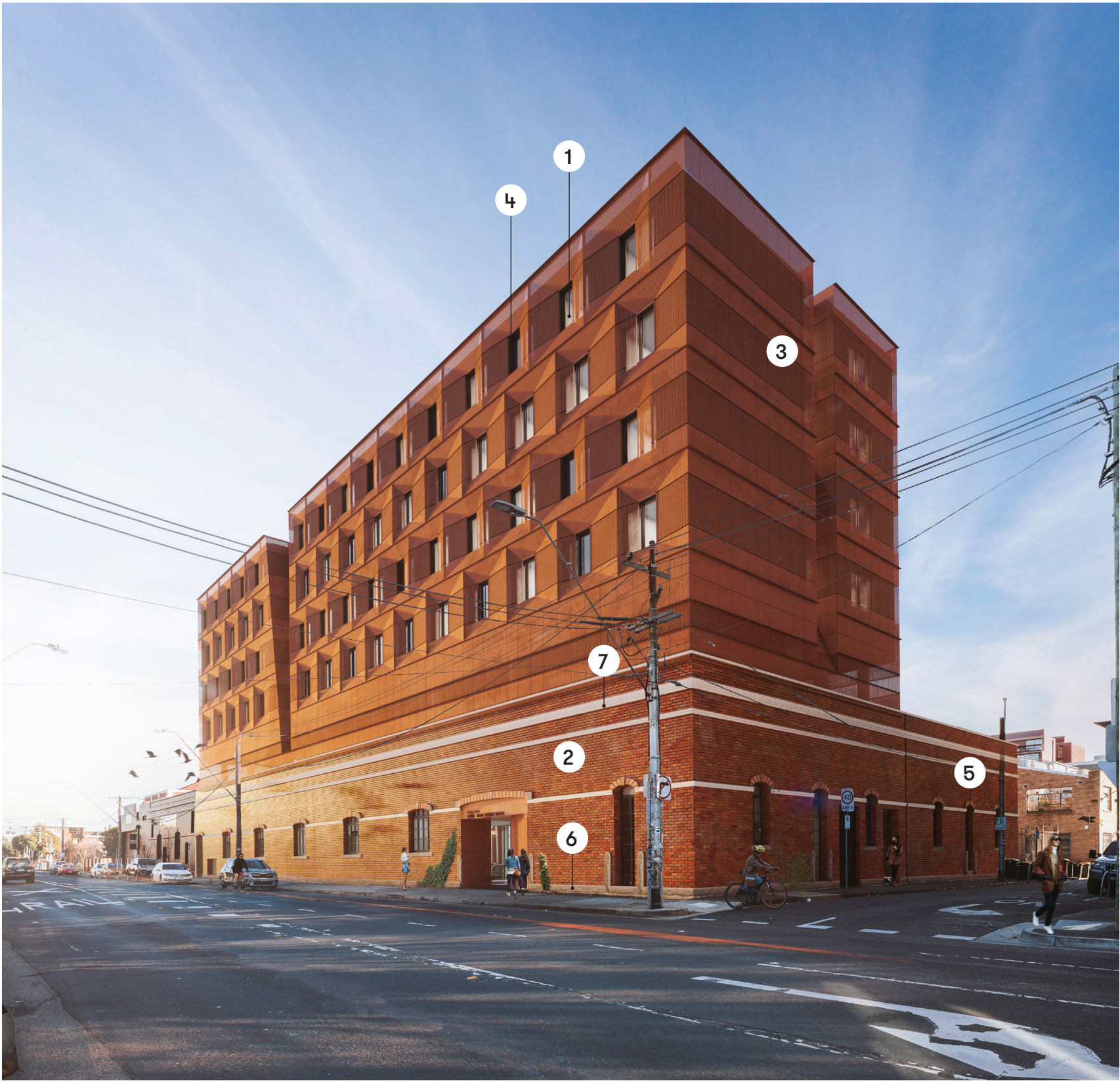
Natural Light and Landscape blend into internal atrium
Sanders Place, Richmond, VIC - NMBW



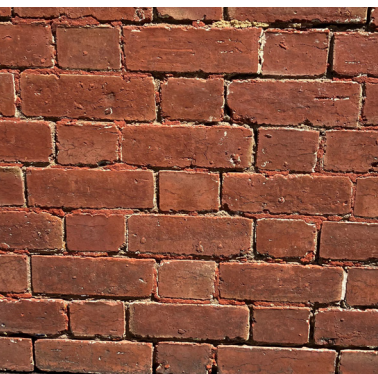
Mezzanine level and high ceiling space with exposed trusses
Goods Shed North, Docklands, VIC - BVN Architecture

07 Facade Strategy

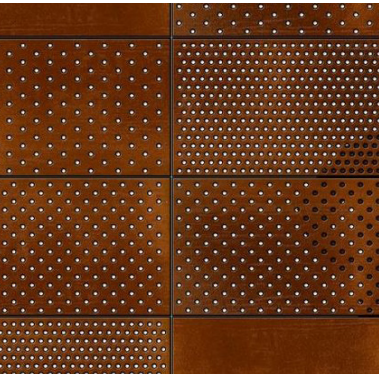
03 Material Palette



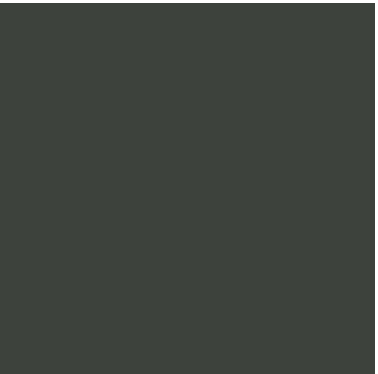
01. GL01 - Clear Glazing in Charcoal Finish Frames



2. BR01 - Refurbish Existing Brickwork



3. MT01 - Perforated Metal Cladding



4. MT02 - Metal Cladding Charcoal



5. MT03 - Metal batten doors/frames



6. ST01 - Refurbished Bluestone Basecourse



7. ST02 - Refurbish Existing Mouldings

08

Visualisation - Interiors

08 Visualisation - Interior

01 Atrium View



Main Atrium View

08 Visualisation - Interiors

02 Atrium Views



View looking North from the entrance towards the Cafe & Student Amenities above

08 Visualisation - Interiors

03 Atrium Views



View looking from the cafe and reception area to the west of the triple height amenities hall