

DRAWING LIST

TP000	COVER PAGE	A
TP001	SITE PLAN	A
TP002	EXISTING ELEVATIONS & SITE PHOTOS	A
TP003	PROPOSED SIGNAGE LOCATION & KEY PLAN	B
TP004	PROPOSED SIGNAGE PLAN, SECTION & ELEVATION SHEET 1	B
TP005	PROPOSED SIGNAGE ELEVATIONS SHEET 2	A
TP006	PROPOSED SIGNAGE ELEVATIONS SHEET 3	A
TP007	SIGNAGE SCHEDULE	B



UNIQLO  
EMPORIUM -  
PROPOSED EXTERNAL  
SIGNAGE UPGRADE



Suite 37, Level 3,  
799 Springvale Road  
Mulgrave, Victoria, 3170 Australia  
  
T: +61 3 9542 9300  
F: +61 3 9542 9310  
www.trg-aus.com  
  
The Retail Group Pty Ltd  
ABN 85 050 134 686  
RBP No. DP-AD1689

DO NOT SCALE DRAWINGS & INFORM TRG  
OF ANY CONFLICT OR DISCREPANCY  
BETWEEN SITE CONDITIONS AND  
DOCUMENTS.  
DRAWINGS SHALL BE READ IN  
CONJUNCTION WITH RELEVANT  
CONSULTANTS DRAWINGS, REGULATORY  
CODES AND STANDARDS.  
© - COPYRIGHT TRG  
COPYRIGHT OF DESIGNS SHOWN HEREIN  
IS RETAINED BY THIS OFFICE. WRITTEN  
AUTHORITY IS REQUIRED FOR ANY  
REPRODUCTION.



PROJECT ADDRESS

TENANCY G26-G28 / 269-321  
LONSDALE STREET

MELBOURNE  
VIC

3000

DRAWING TITLE

COVER PAGE

PROJECT  
UNIQLO EMPORIUM

A	TOWN PLANNING ISSUE	TRG	23/06/2025
REV	AMENDMENTS DETAILS	BY	DATE

DATE

JUNE '25

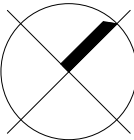
DRAWN  
RH

REVISION No.

A

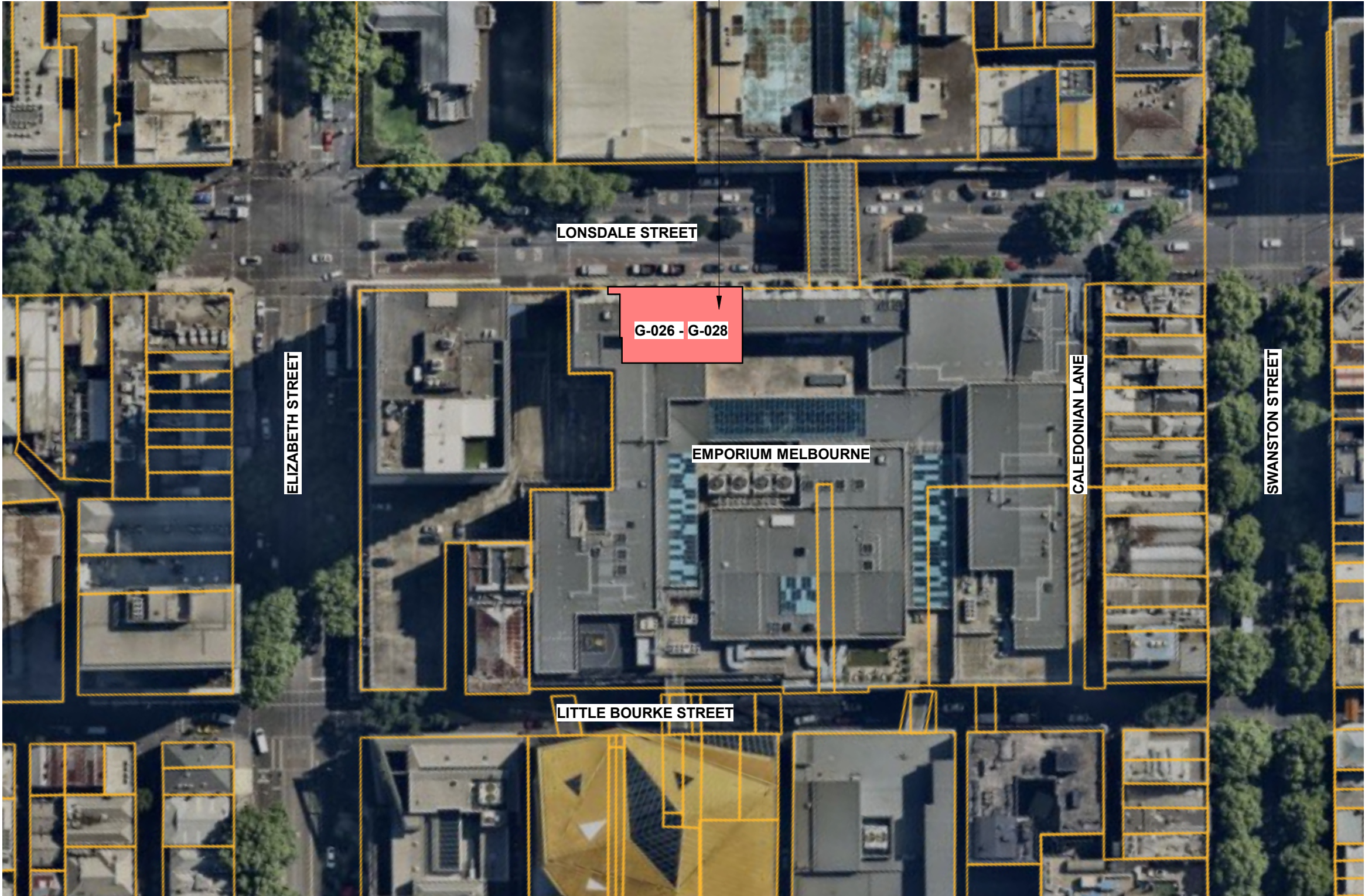
CHECKED  
AP

NORTH



TP000  
  
SHEET  
1 of 8





**SUBJECT SITE**  
TENANCIES G026-  
G-028, 269-321  
LONSDALE ST,  
MELBOURNE VIC 3000

1 SITE PLAN  
NTS



Suite 37, Level 3,  
799 Springvale Road  
Mulgrave, Victoria, 3170 Australia  
  
T: +61 3 9542 9300  
F: +61 3 9542 9310  
www.trg-us.com  
  
The Retail Group Pty Ltd  
ABN 85 050 134 686  
RBP No. DP-AD1689

DO NOT SCALE DRAWINGS & INFORM TRG  
OF ANY CONFLICT OR DISCREPANCY  
BETWEEN SITE CONDITIONS AND  
DOCUMENTS.  
DRAWINGS SHALL BE READ IN  
CONJUNCTION WITH RELEVANT  
CONSULTANTS DRAWINGS, REGULATORY  
CODES AND STANDARDS.  
© - COPYRIGHT TRG  
COPYRIGHT OF DESIGNS SHOWN HEREIN  
IS RETAINED BY THIS OFFICE. WRITTEN  
AUTHORITY IS REQUIRED FOR ANY  
REPRODUCTION.



**PROJECT ADDRESS**

TENANCY G26-G28 / 269-321  
LONSDALE STREET

MELBOURNE  
VIC

3000

**DRAWING TITLE**

SITE PLAN

**PROJECT**  
UNIQLO EMPORIUM

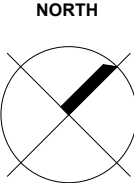
A	TOWN PLANNING ISSUE	TRG	23/06/2025
REV	AMENDMENTS DETAILS	BY	DATE

**DATE**  
JUNE '25

**DRAWN**  
RH

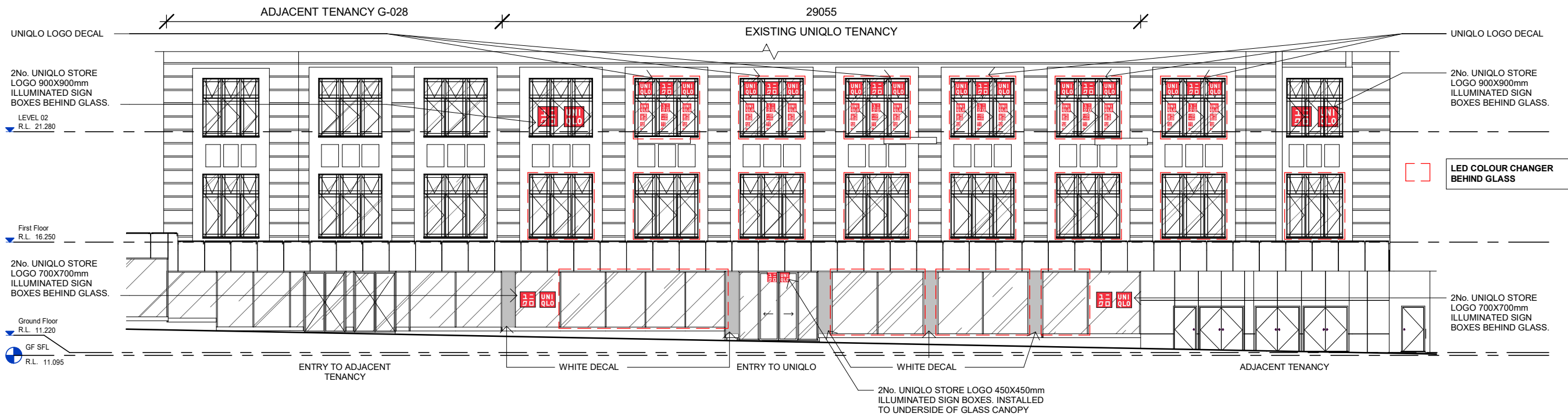
**REVISION No.**  
A

**CHECKED**  
AP



TP001  
  
SHEET  
2 of 8





## 1 EX LONSDALE STREET ELEVATION

1 : 200



PHOTO 01



PHOTO 02

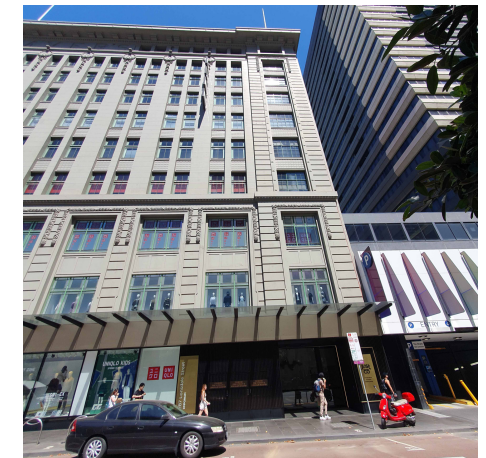
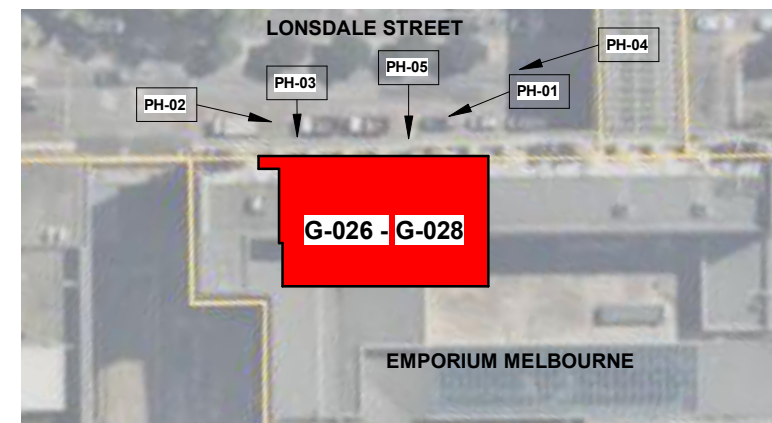


PHOTO 03



## 2 EXISTING KEY PLAN

1 : 1500



PHOTO 04



PHOTO 05



Suite 37, Level 3,  
799 Springvale Road  
Mulgrave, Victoria, 3170 Australia

T: +61 3 9542 9300  
F: +61 3 9542 9310  
www.trg-aus.com

The Retail Group Pty Ltd  
ABN 85 050 134 686  
RBP No. DP-AD1689

DO NOT SCALE DRAWINGS & INFORM TRG  
OF ANY CONFLICT OR DISCREPANCY  
BETWEEN SITE CONDITIONS AND  
DOCUMENTS.  
DRAWINGS SHALL BE READ IN  
CONJUNCTION WITH RELEVANT  
CONSULTANTS DRAWINGS, REGULATORY  
CODES AND STANDARDS.  
© - COPYRIGHT TRG  
COPYRIGHT OF DESIGNS SHOWN HEREIN  
IS RETAINED BY THIS OFFICE. WRITTEN  
AUTHORITY IS REQUIRED FOR ANY  
REPRODUCTION.



### PROJECT ADDRESS

TENANCY G26-G28 / 269-321  
LONSDALE STREET

MELBOURNE  
VIC

3000

### DRAWING TITLE

EXISTING ELEVATIONS & SITE  
PHOTOS

### PROJECT

UNIQLO EMPORIUM

A	TOWN PLANNING ISSUE	TRG	23/06/2025
REV	AMENDMENTS DETAILS	BY	DATE

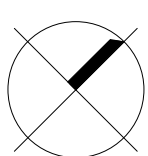
DATE  
JUNE '25

DRAWN  
RH

REVISION No.  
A

CHECKED  
AP

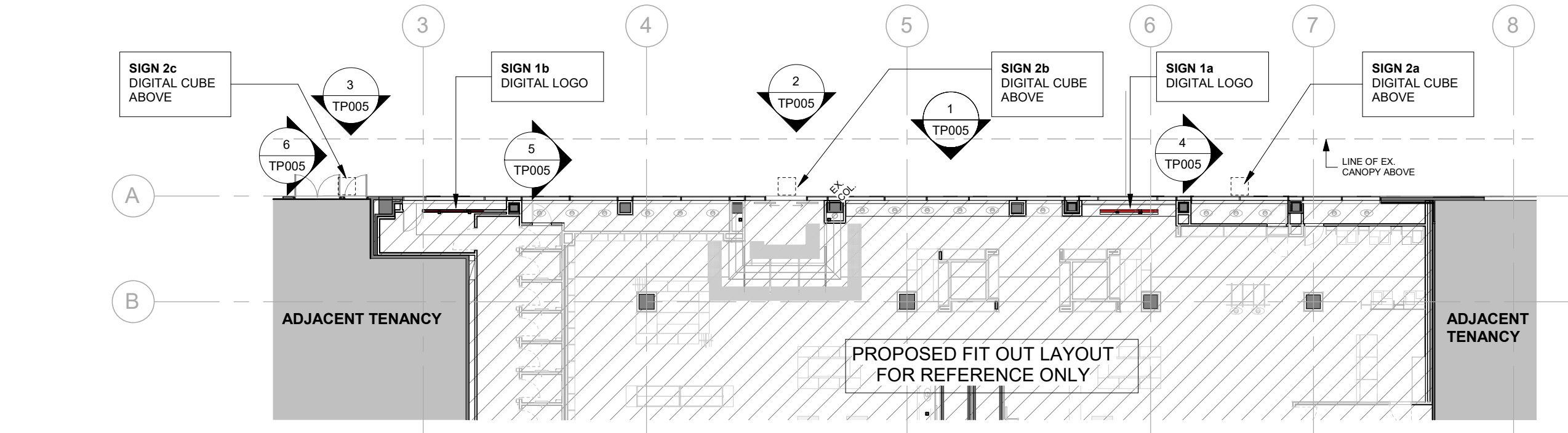
### NORTH



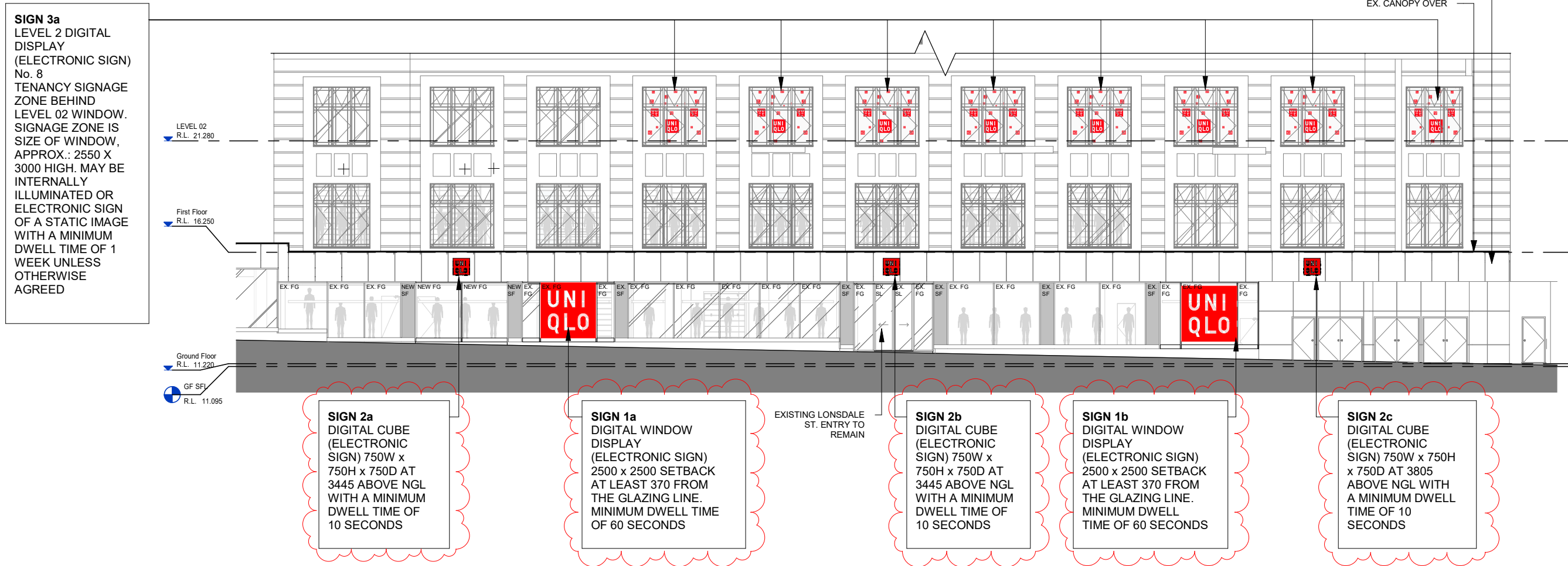
TP002

SHEET  
3 of 8





1 GROUND FLOOR KEY PLAN  
1 : 200



2 LONSDALE STREET ELEVATION  
1 : 200

**NOTE:** REFER TO SHEET TP005 FOR SIGNAGE SCHEDULE

**ABBREVIATIONS**

EX. FG	EXISTING FIXED GLASS
NEW FG	NEW FIXED GLASS
EX. SF	EXISTING SOLID FILM
NEW SF	NEW SOLID FILM TO MATCH EXISTING
EX. SL	EXISTING SLIDING DOOR

**NOTE:** GLAZING EXTENT AND CONDITION ARE SHOWING FOR REFERENCE ONLY. GLAZING DOES NOT FORM PART OF THIS TOWN PLANNING APPLICATION.

- NOTE:**
1. UNLESS WITH THE WRITTEN CONSENT OF THE RESPONSIBLE AUTHORITY, THE DIGITAL WINDOW DISPLAYS (SIGNS 1a AND 1b) WILL ONLY SHOW LIFESTYLE IMAGES AND ANIMATIONS, MOVING COLOUR IMAGES AND DIGITAL DISPLAY OR STORE PRODUCTS.
  2. THE ELECTRONIC SIGNS MUST BE DIMMED BETWEEN 11PM AND 6AM TO THE SATISFACTION OF THE RESPONSIBLE AUTHORITY.
  3. THE ELECTRONIC SIGNS MUST BE CONTROLLABLE AND DIMMABLE TO THE SATISFACTION OF THE RESPONSIBLE AUTHORITY.
  4. ELECTRONIC SIGNS MUST NOT DAZZLE OR DISTRACT ROAD USERS DO TO ITS COLOURING.
  5. LIGHTING OF THE ELECTRONIC SIGN MUST BE POSITIONED SO NO DIRECT LIGHT OR GLARE SHALL BE VISIBLE FROM ANY
  6. ROADWAY OR FROM ANY ADJOINING PROPERTY, TO THE SATISFACTION OF THE RESPONSIBLE AUTHORITY.
  7. THE ELECTRONIC SIGNS (GROUND FLOOR DIGITAL WINDOW DISPLAY) MUST HAVE A MINIMUM DWELL TIME OF 60 SECONDS BETWEEN ADVERTISEMENTS; WITH AN INSTANTANEOUS TRANSITION BETWEEN EACH ADVERTISEMENT
  8. THE ELECTRONIC SIGNS (GROUND FLOOR DIGITAL CUBE) MUST HAVE A MINIMUM DWELL TIME OF 10 SECONDS BETWEEN ADVERTISEMENTS; WITH AN INSTANTANEOUS TRANSITION BETWEEN EACH ADVERTISEMENT



Suite 37, Level 3,  
799 Springvale Road  
Mulgrave, Victoria, 3170 Australia

T: +61 3 9542 9300  
F: +61 3 9542 9310  
www.trg-aus.com

The Retail Group Pty Ltd  
ABN 85 050 134 686  
RBP No. DP-AD1689

DO NOT SCALE DRAWINGS & INFORM TRG OF ANY CONFLICT OR DISCREPANCY BETWEEN SITE CONDITIONS AND DOCUMENTS. DRAWINGS SHALL BE READ IN CONJUNCTION WITH RELEVANT CONSULTANTS DRAWINGS, REGULATORY CODES AND STANDARDS. © - COPYRIGHT TRG. COPYRIGHT OF DESIGNS SHOWN HEREIN IS RETAINED BY THIS OFFICE. WRITTEN AUTHORITY IS REQUIRED FOR ANY REPRODUCTION.



**PROJECT ADDRESS**

TENANCY G26-G28 / 269-321  
LONSDALE STREET

MELBOURNE

VIC

3000

**DRAWING TITLE**

PROPOSED SIGNAGE LOCATION &  
KEY PLAN

**PROJECT**

UNIQLO EMPORIUM

REV	AMENDMENTS DETAILS	BY	DATE
B	CLARIFICATION OF SIGNAGE DWELL TIMES	TRG	26/06/2025
A	TOWN PLANNING ISSUE	TRG	23/06/2025

**DATE**

JUNE '25

**DRAWN**

RH

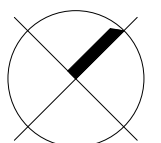
**REVISION No.**

B

**CHECKED**

AP

**NORTH**

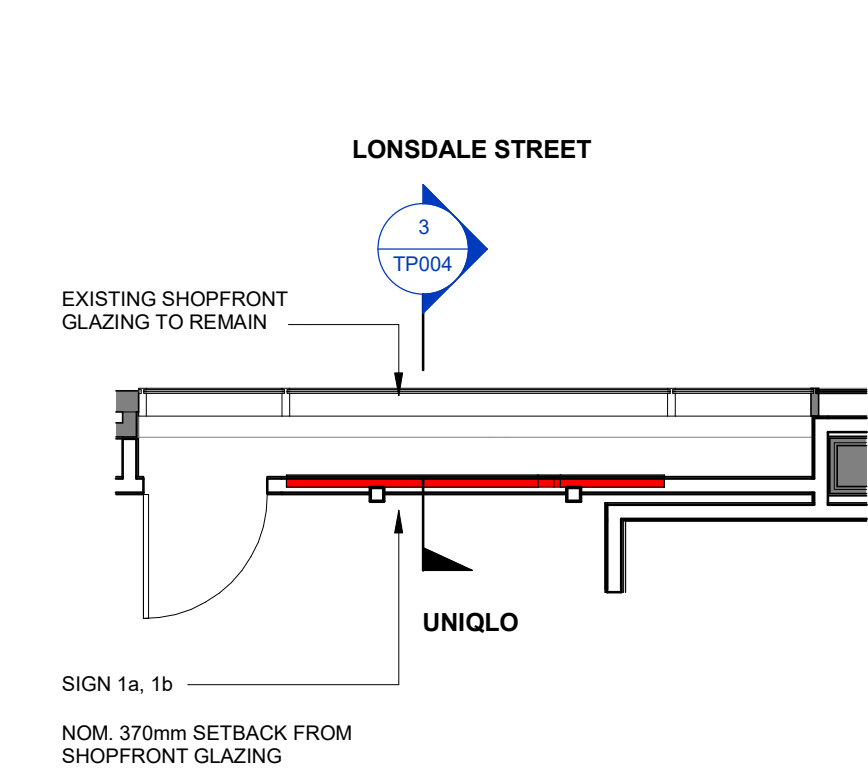


TP003

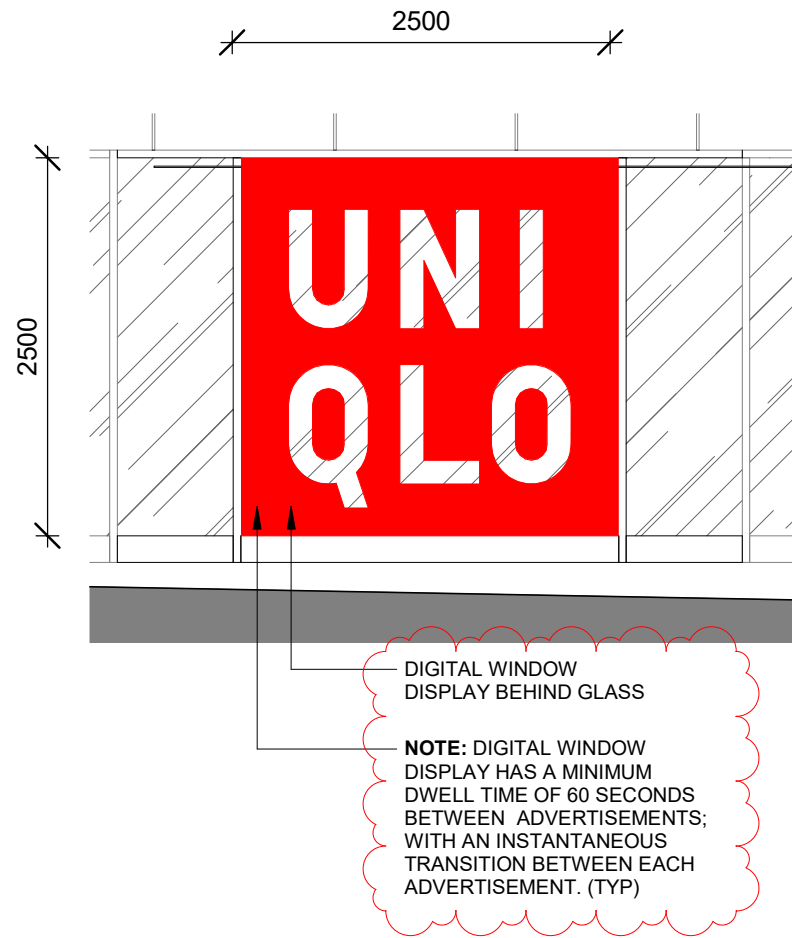
**SHEET**

4 of 8

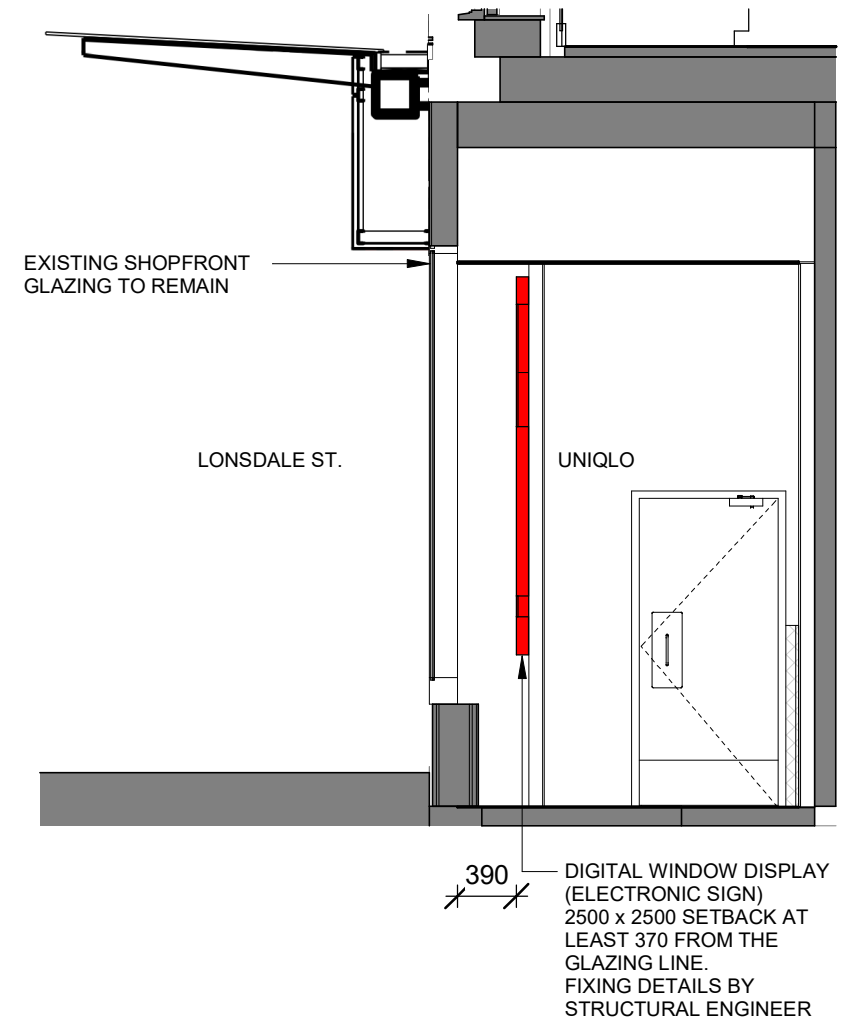




1 TYP - SIGN 1a, 1b PLAN  
1 : 50



2 TYP - SIGN 1a, 1b ELEVATION  
1 : 50



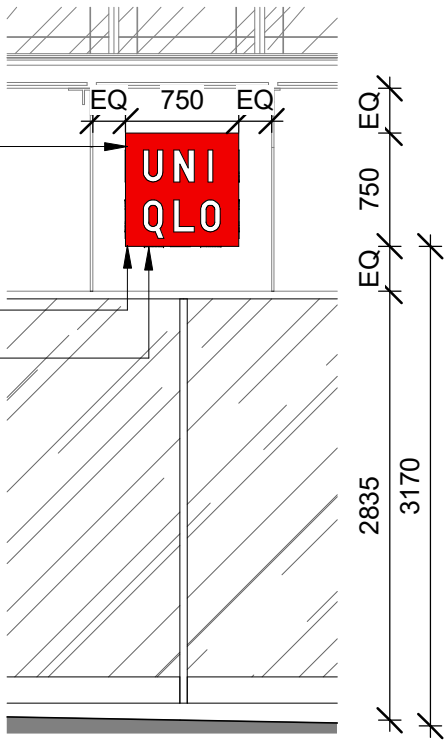
3 TYP - SIGN 1a, 1b SECTION  
1 : 50



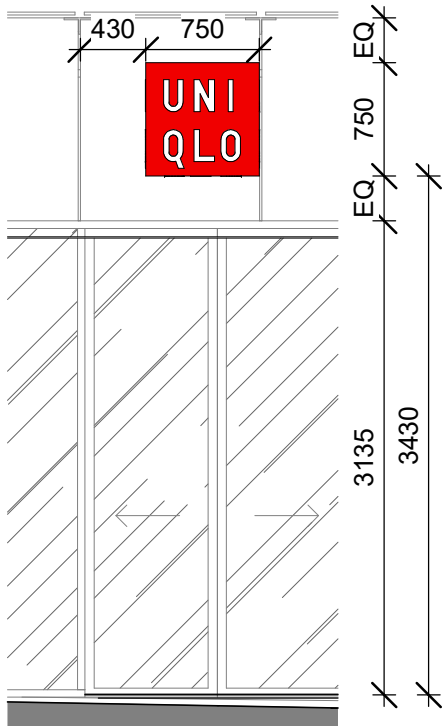
DIGITAL CUBES FIXED  
TO BUILDING FACADE.  
DETAILS BY  
STRUCTURAL  
ENGINEER.

DIGITAL CUBES LED SIGN

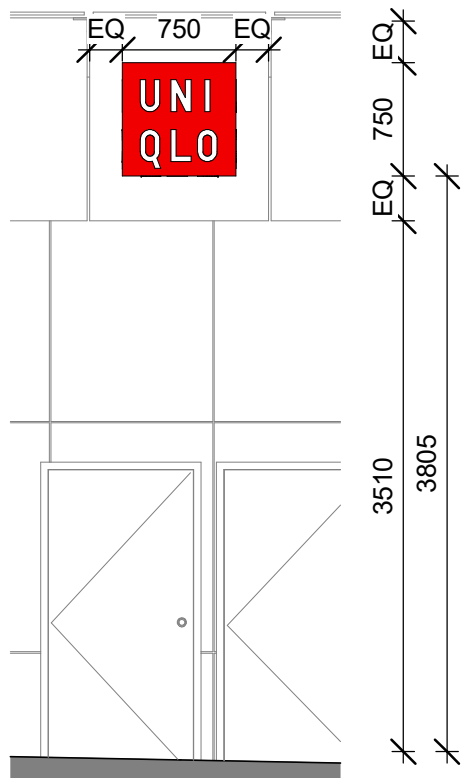
NOTE: SIGN TO FEATURE  
STATIC RED  
BACKGROUND WITH A  
'SINGLE SWIPE' TEXT  
ANIMATION TO  
TRANSITION BETWEEN  
FRAMES. DWELL TIME OF  
10 SECONDS BETWEEN  
EACH CHANGE IN TEXT  
FRAME. (TYP)



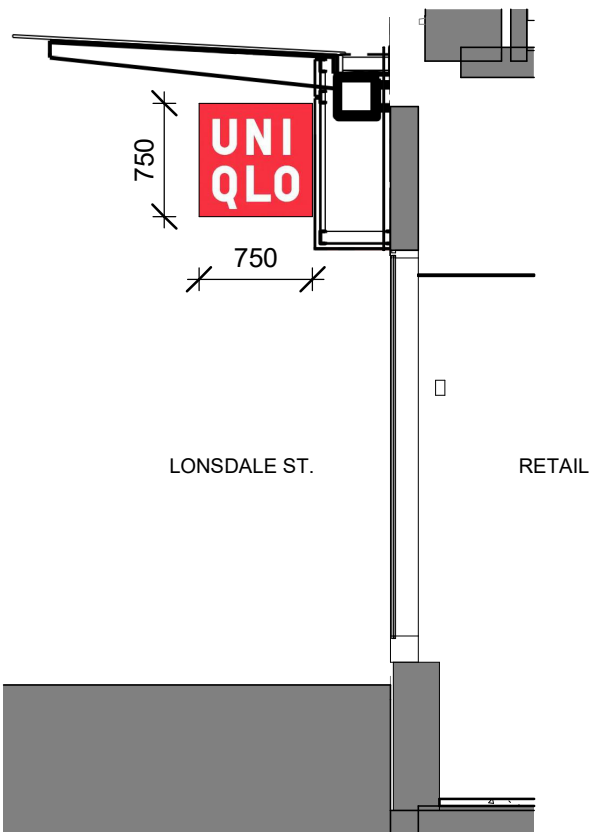
1 SIGN 2a ELEVATION  
1 : 50



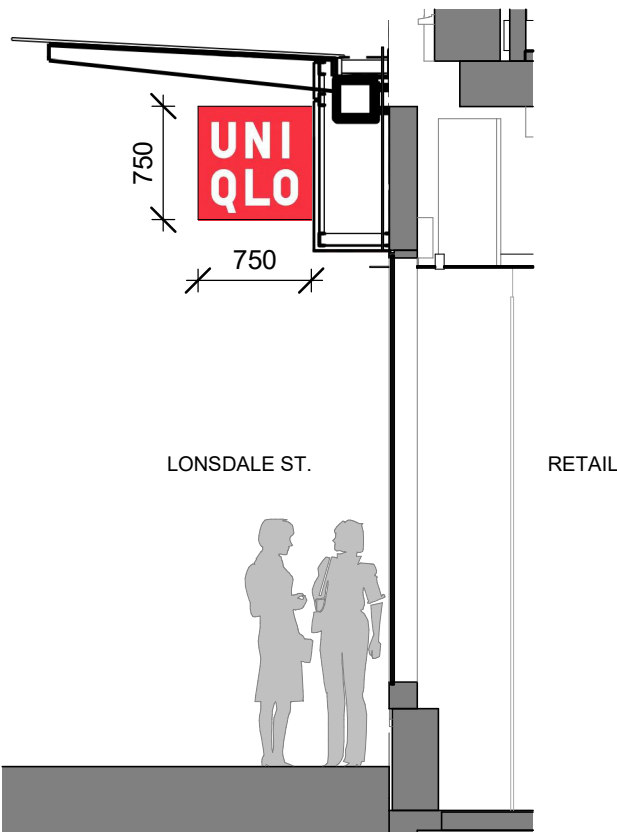
2 SIGN 2b ELEVATION  
1 : 50



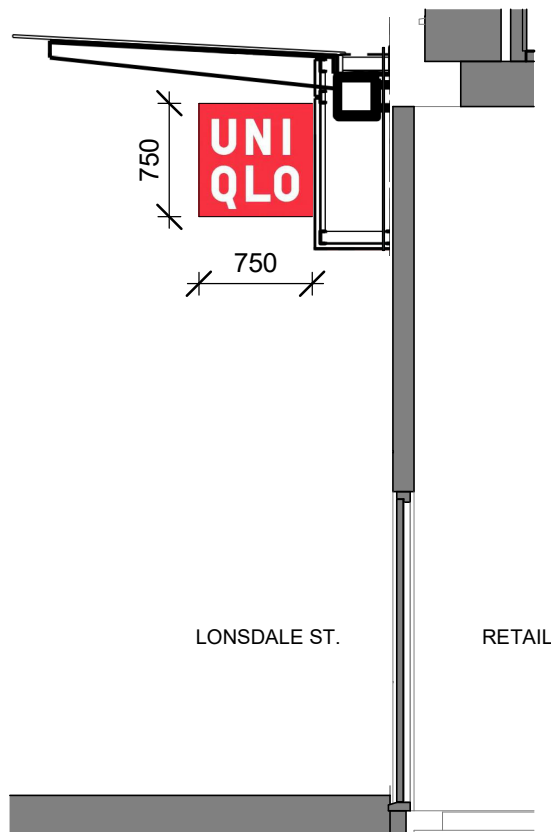
3 SIGN 2c ELEVATION  
1 : 50



4 SIGN 2a SIDE ELEVATION  
1 : 50



5 SIGN 2b SIDE ELEVATION  
1 : 50



6 SIGN 2c SIDE ELEVATION  
1 : 50



Suite 37, Level 3,  
799 Springvale Road  
Mulgrave, Victoria, 3170 Australia

T: +61 3 9542 9300  
F: +61 3 9542 9310  
www.trg-aus.com

The Retail Group Pty Ltd  
ABN 85 050 134 686  
RBP No. DP-AD1689

DO NOT SCALE DRAWINGS & INFORM TRG  
OF ANY CONFLICT OR DISCREPANCY  
BETWEEN SITE CONDITIONS AND  
DOCUMENTS.  
DRAWINGS SHALL BE READ IN  
CONJUNCTION WITH RELEVANT  
CONSULTANTS DRAWINGS, REGULATORY  
CODES AND STANDARDS.  
© - COPYRIGHT TRG  
COPYRIGHT OF DESIGNS SHOWN HEREIN  
IS RETAINED BY THIS OFFICE. WRITTEN  
AUTHORITY IS REQUIRED FOR ANY  
REPRODUCTION.



PROJECT ADDRESS

TENANCY G26-G28 / 269-321  
LONSDALE STREET

MELBOURNE

VIC

3000

DRAWING TITLE

PROPOSED SIGNAGE  
ELEVATIONS SHEET 2

PROJECT

UNIQLO EMPORIUM

A	TOWN PLANNING ISSUE	TRG	23/06/2025
REV	AMENDMENTS DETAILS	BY	DATE

DATE

JUNE '25

DRAWN

RH/SSW

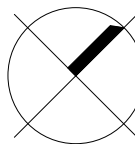
REVISION No.

A

CHECKED

AP

NORTH

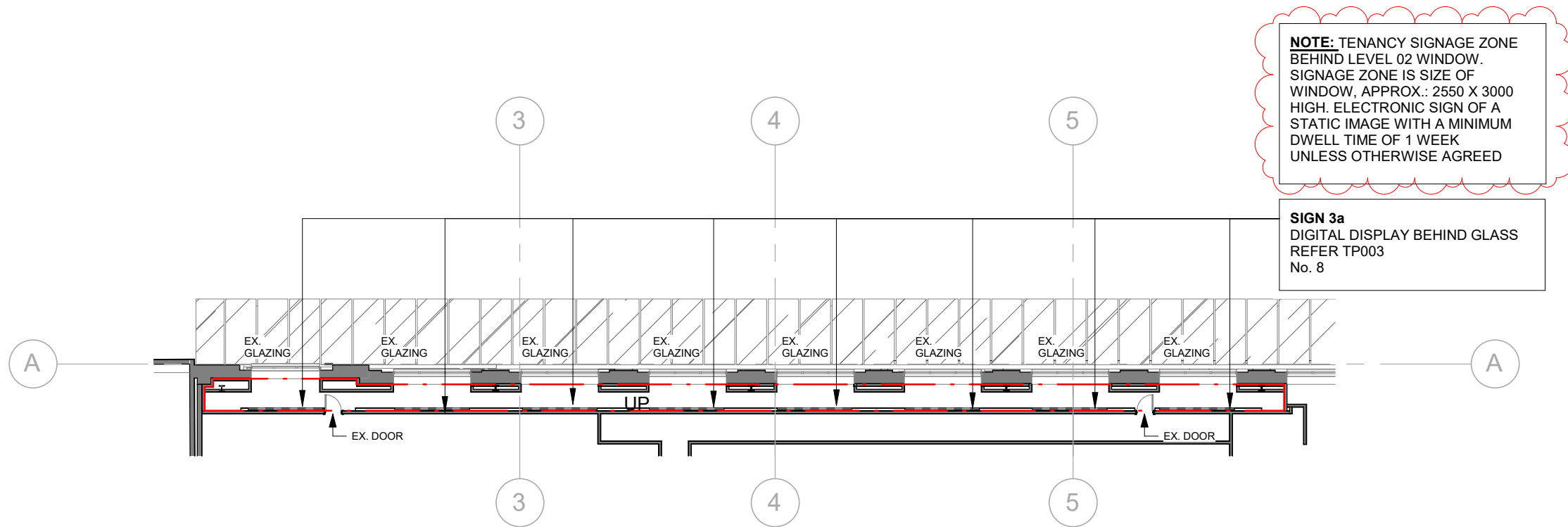


TP005

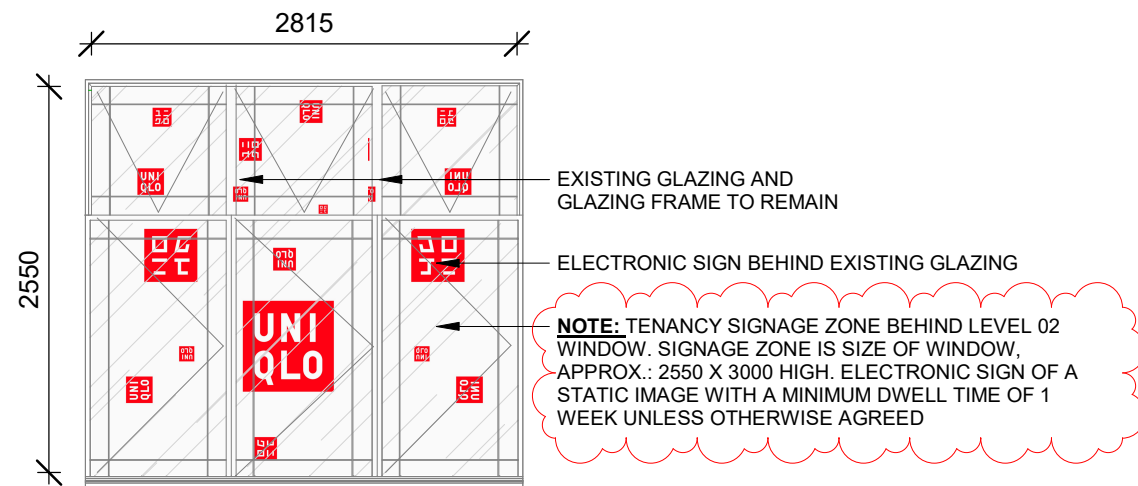
SHEET

6 of 8





1 KEY PLAN SECOND FLOOR  
1 : 200



2 TYP - SIGN 3a ELEVATION  
1 : 50



Suite 37, Level 3,  
799 Springvale Road  
Mulgrave, Victoria, 3170 Australia

T: +61 3 9542 9300  
F: +61 3 9542 9310  
www.trg-aus.com

The Retail Group Pty Ltd  
ABN 85 050 134 686  
RBP No. DP-AD1689

DO NOT SCALE DRAWINGS & INFORM TRG  
OF ANY CONFLICT OR DISCREPANCY  
BETWEEN SITE CONDITIONS AND  
DOCUMENTS.  
DRAWINGS SHALL BE READ IN  
CONJUNCTION WITH RELEVANT  
CONSULTANTS DRAWINGS, REGULATORY  
CODES AND STANDARDS.  
© - COPYRIGHT TRG  
COPYRIGHT OF DESIGNS SHOWN HEREIN  
IS RETAINED BY THIS OFFICE. WRITTEN  
AUTHORITY IS REQUIRED FOR ANY  
REPRODUCTION.



PROJECT ADDRESS

TENANCY G26-G28 / 269-321  
LONSDALE STREET

MELBOURNE

VIC

3000

DRAWING TITLE

PROPOSED SIGNAGE  
ELEVATIONS SHEET 3

PROJECT

UNIQLO EMPORIUM

REV	AMENDMENTS DETAILS	BY	DATE	CLARIFICATION OF SIGNAGE DWELL TIMES	
				A	B
				TOWN PLANNING ISSUE	26/06/2025
		TRG	23/06/2025		

DATE

JUNE '25

DRAWN

RH/SSW

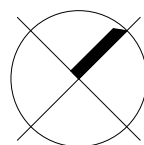
REVISION No.

B

CHECKED

AP

NORTH



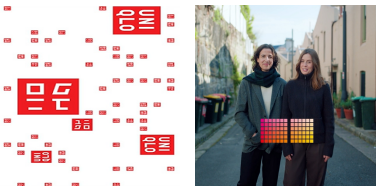


TP006

SHEET

7 of 8



SIGNAGE SCHEDULE							
SIGN NO.	DESCRIPTION	LOCATION	SIZE	AREA	QTY	COLOUR	REFERENCE IMAGES
SIGN 1a, 1b	<b>DIGITAL WINDOW DISPLAY</b> THE ELECTRONIC SIGNS (GROUND FLOOR DIGITAL WINDOW DISPLAY) MUST HAVE A MINIMUM DWELL TIME OF 60 SECONDS BETWEEN ADVERTISEMENTS; WITH AN INSTANTANEOUS TRANSITION BETWEEN EACH ADVERTISEMENT	LONSDALE STREET GROUND FLOOR. INSIDE UNIQLO TENANCY.	2500mm H x 2500mm W	6.25 m²	2	<div><div></div><div></div></div>	
SIGN 2a, 2b, 2c	<b>CUBE DIGITAL LOGO:</b> STATIC RED BACKGROUND WITH A 'SINGLE SWIPE' TEXT ANIMATION TO TRANSITION BETWEEN FRAMES. DWELL TIME OF 10 SECONDS BETWEEN EACH CHANGE IN TEXT FRAME.	LONSDALE STREET GROUND FLOOR. TO UNDERSIDE OF SHOPFRONT CANOPY.	750mm H x 750mm W x 750mm D	0.56 m²	3	<div><div></div><div></div></div>	
SIGN 3a	<b>DIGITAL DISPLAY:</b> ELECTRONIC SIGN WITH A STATIC IMAGE WITH A MINIMUM DWELL TIME OF 1 WEEK UNLESS OTHERWISE AGREED WITH THE RESPONSIBLE AUTHORITY.	LONSDALE STREET SECOND FLOOR	2585mm H x 2815mm W	7.27m²	8	<div><div></div><div></div></div>	
TOTAL				72.34 m²	13		