

VICTORIAN COLLEGE FOR THE DEAF LANDSCAPE WORKS



DOCUMENT SCHEDULE

No.	Sheet Name	Document Number
000	COVER SHEET	VCD-3ALA-ZZ-DR-000 COVER SHEET
001	KEY PLAN	VCD-3ALA-ZZ-DR-001 KEY PLAN
201	SURFACE TREATMENT PLAN 1	VCD-3ALA-ZZ-DR-201 SURFACE TREATMENT PLAN 1
202	SURFACE TREATMENT PLAN 2	VCD-3ALA-ZZ-DR-202 SURFACE TREATMENT PLAN 2
203	SURFACE TREATMENT PLAN 3	VCD-3ALA-ZZ-DR-203 SURFACE TREATMENT PLAN 3

SCHEDULE OF LANDSCAPE WORKS

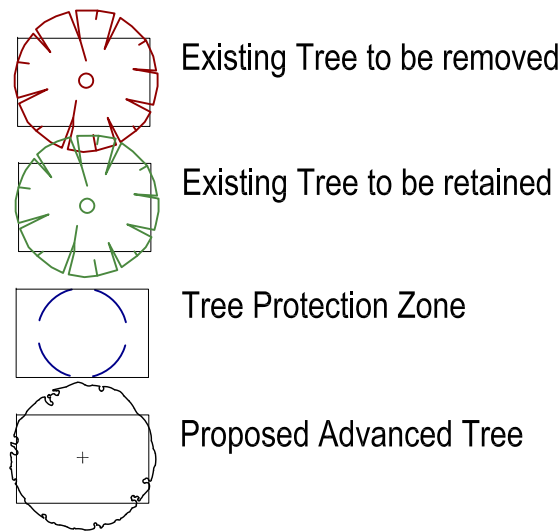
EXTENT & SITE CONTEXT



PAVEMENTS & SURFACES

PAV1		Paving Type 1 Asphalt to match existing
PAV2		Paving Type 2 Brick pavers to match existing
PAV3		Paving Type 3 - Grey concrete paving with broom finish.
PAV4		Paving Type 4 - Feature concrete paving with broom finish. Colour TBC.
PAV5		Paving Type 5 - Feature concrete paving with broom finish. Colour TBC.
GB1		Garden Bed Type 1 Preparation, Topsoil, Mulch, Plants & Irrigation.
L1		Lawn Type 1 Preparation, Topsoil & Turf.
SF1		Soft Fall Type 1 Soft Fall Mulch
SF2		Soft Fall Type 2 Wetpour Rubber Surface

TREE PLANTING



WALLS & EDGES

W1		Wall Type 1 Brick (TBC)
SE		Steel Edging

FURNITURE

LF1		Furniture Type 1 Rockwork
LF2		Furniture Type 2 Loose Seating (TBC)
LF3		Furniture Type 3 Timber Slat Seating
LF4		Furniture Type 4 Timber Slat Seating

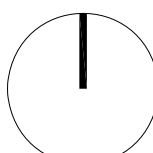
DO NOT SCALE - USE WRITTEN DIMENSIONS ONLY

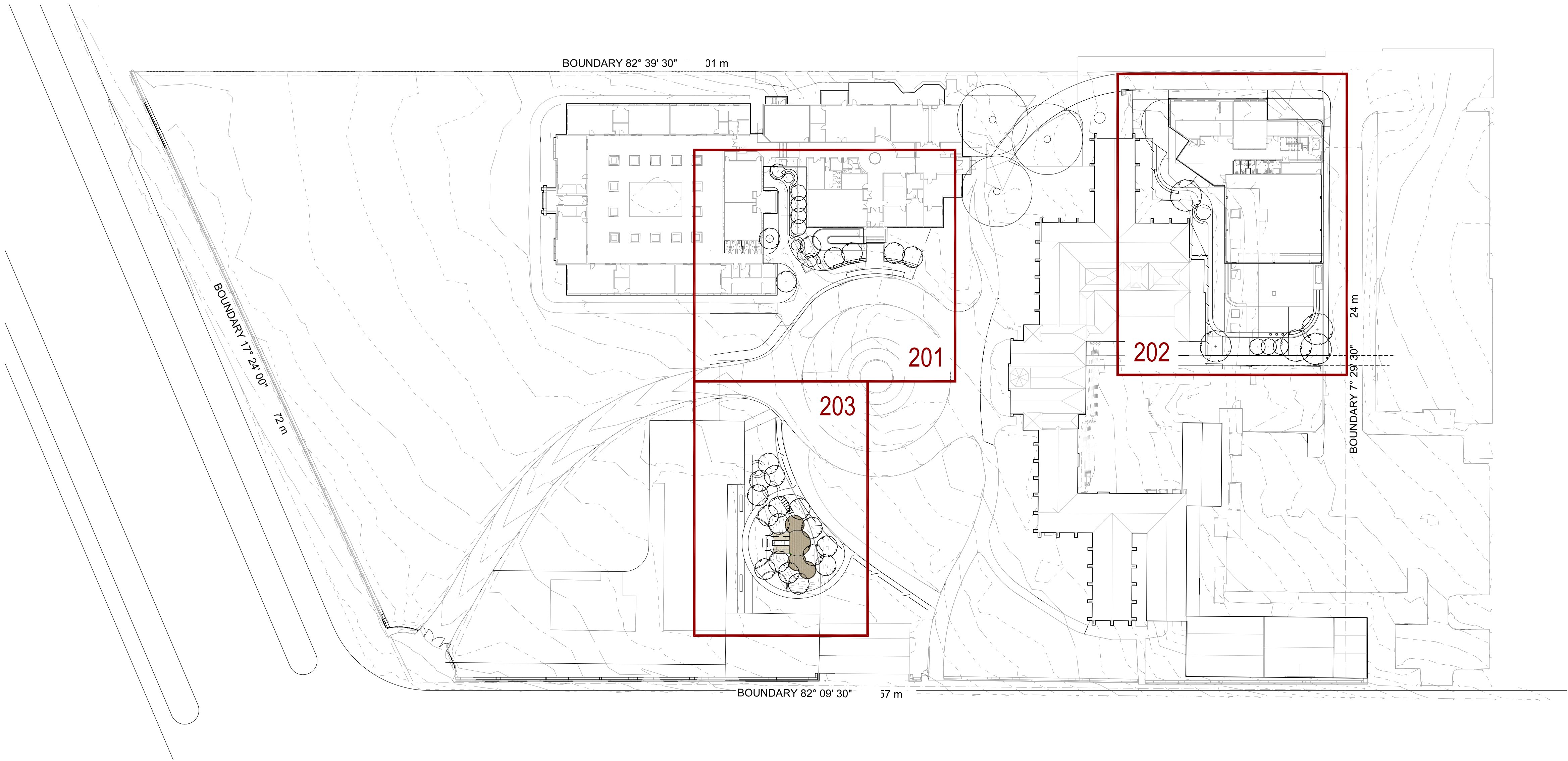


WARNING: Beware of underground services. The location of underground services are approximate only, and the exact location of all services should be proven on-site.

NOTES:

1. All setbacks shall be checked and approved on site by the superintendent prior to construction.
2. Any discrepancies shall be immediately reported to the superintendent, who shall issue further instructions.
3. Service locations shown are indicative only. Locate all services on site prior to any excavation or planting, and protect same during constructions.
4. Relocate trees to minimum 0.5m from service locations.

3		09.09.25	DESIGN DEVELOPMENT DESIGN DEVELOPMENT PRELIMINARY	PW
2		14.05.24		PW
1		24.04.24		PW
No	DATE	AMENDMENTS		AUT
3 Acres			three acres landscape architecture 17/50 alghin street section 44/45/46/47 m 0437 072 008 a h@3a@threeacres.com.au	
CLIENT NBRS				
PROJECT VICTORIAN COLLEGE FOR THE DEAF 597 ST KILDA ROAD, MELBOURNE 3004				
DRAWING COVER SHEET				
STATUS				
PASSED / REVIEWED		APPROVED / AUTH. FOR USE		
NORTH POINT 		DESIGN PW	DRAWN TS	
		A1 N/A	A3 N/A	
		DATE PLOTTED		
PROJ. NO. 21303	DWG NO. 000		REV. 3	
© COPYRIGHT 2023 THREE ACRES LA				



WARNING: Beware of underground services. The location of underground services are approximate only, and the exact location of all services should be proven on-site.

- NOTES:
1. All setbacks shall be checked and approved on site by the superintendent prior to construction.
 2. Any discrepancies shall be immediately reported to the superintendent, who shall issue further instructions.
 3. Service locations shown are indicative only. Locate all services on site prior to any excavation or planting, and protect same during constructions.
 4. Relocate trees to minimum 0.5m from service locations.

3 09.09.25 DESIGN DEVELOPMENT PW			
2 14.05.24 DESIGN DEVELOPMENT PW			
1 24.04.24 PRELIMINARY PW			
No	DATE	AMENDMENTS	AUT.

3 Acres

three acres landscape architecture
g1196 alpm street
melbourne vic 3011
m 0437 072 038
e h@3a.com.au

Landscape Architecture

CLIENT
NBRS

PROJECT
VICTORIAN COLLEGE FOR THE DEAF
597 ST KILDA ROAD, MELBOURNE 3004

DRAWING
KEY PLAN

STATUS

PASSED / REVIEWED		APPROVED / AUTH. FOR USE	
NORTH POINT		DESIGN	DRAWN
		PW	TS
A1 1:500		A3 1:1000	
DATE PLOTTED			

PROJ. NO. 21303	DWG NO. 001	REV. 3
--------------------	----------------	-----------

© COPYRIGHT 2023 THREE ACRES LA



WARNING: Beware of underground services. The location of underground services are approximate only, and the exact location of all services should be proven on-site.

- NOTES:
1. All setbacks shall be checked and approved on site by the superintendent prior to construction.
 2. Any discrepancies shall be immediately reported to the superintendent, who shall issue further instructions.
 3. Service locations shown are indicative only. Locate all services on site prior to any excavation or planting, and protect same during constructions.
 4. Relocate trees to minimum 0.5m from service locations.

3	09.09.25	DESIGN DEVELOPMENT	PW
2	14.05.24	DESIGN DEVELOPMENT	PW
1	24.04.24	PRELIMINARY	PW
No	DATE	AMENDMENTS	AUT.

3 Acres
Landscape Architecture

three acres landscape architecture
g1/96 algarve street
melbourne vic 3011
m 0437 072 038
e h@3a.la
www.threeacres.com.au

CLIENT NBRS		
PROJECT VICTORIAN COLLEGE FOR THE DEAF 597 ST KILDA ROAD, MELBOURNE 3004		
DRAWING SURFACE TREATMENT PLAN 1		
STATUS		
PASSED / REVIEWED	APPROVED / AUTH. FOR USE	
NORTH POINT 	DESIGN PW AS 1:100	DRAWN TS AS 1:200
DATE PLOTTED		
PROJ. NO. 21303	DWG. NO. 201	REV. 3
© COPYRIGHT 2023 THREE ACRES LA		



WARNING: Beware of underground services. The location of underground services are approximate only, and the exact location of all services should be proven on-site.

- NOTES:
1. All setbacks shall be checked and approved on site by the superintendent prior to construction.
 2. Any discrepancies shall be immediately reported to the superintendent, who shall issue further instructions.
 3. Service locations shown are indicative only. Locate all services on site prior to any excavation or planting, and protect same during constructions.
 4. Relocate trees to minimum 0.5m from service locations.

3	09.09.25	DESIGN DEVELOPMENT	PW
2	14.05.24	DESIGN DEVELOPMENT	PW
1	24.04.24	PRELIMINARY	PW
No	DATE	AMENDMENTS	AUT.

3 Acres

three acres landscape architecture
g1 96 algarve street
melbourne vic 3011
m 0437 072 038
e hla@threeacres.com.au

Landscape Architecture

CLIENT
NBRS

PROJECT
VICTORIAN COLLEGE FOR THE DEAF
597 ST KILDA ROAD, MELBOURNE 3004

DRAWING
SURFACE TREATMENT PLAN 2

STATUS

PASSED / REVIEWED

APPROVED / AUTH. FOR USE

NORTH POINT

AS
1:100


DATE PLOTTED

DRAWN
TS

AS
1:200

PROJ. NO. 21303	DWG NO. 202	REV. 3
--------------------	----------------	-----------

DO NOT SCALE - USE WRITTEN DIMENSIONS ONLY



**DIAL BEFORE
YOU DIG**
www.1100.com.au

WARNING: Beware of underground services. The location of underground services are approximate only, and the exact location of all services should be proven on-site.

NOTES:

1. All setbacks shall be checked and approved on site by the superintendent prior to construction.
2. Any discrepancies shall be immediately reported to the superintendent, who shall issue further instructions.
3. Service locations shown are indicative only. Locate all services on site prior to any excavation or planting, and protect same during constructions.
4. Relocate trees to minimum 0.5m from service locations.

3	09.09.25	DESIGN DEVELOPMENT	PW
2	14.05.24	DESIGN DEVELOPMENT	PW
1	24.04.24	PRELIMINARY	PW

No	DATE	AMENDMENTS	AUT.

3 Acres

three acres landscape architecture
g1196 algarve street
melbourne vic 3011
m 0437 072 038
e h@3a.com.au

CLIENT
NBRS

PROJECT
VICTORIAN COLLEGE FOR THE DEAF
597 ST KILDA ROAD, MELBOURNE 3004

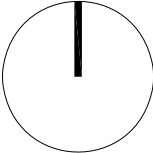
DRAWING
SURFACE TREATMENT PLAN 3

STATUS

PASSED / REVIEWED

APPROVED / AUTH. FOR USE

NORTH POINT



DESIGN
PW

DRAWN
TS

A1
1:100

A3
1:200

DATE PLOTTED

PROJ. NO.
21303

DWG NO.
203

REV.
3

© COPYRIGHT 2023 THREE ACRES LA