

# VICTORIA STREET DEVELOPMENT LANDSCAPE DRAWINGS FOR TENDER FEBRUARY 2024

PREPARED BY:

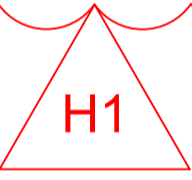
**MALA STUDIO**  
1/11 AMSTERDAM STREET  
RICHMOND VICTORIA 3047

FOR:

**Assemble**  
**Victoria Street Development**  
342-348 VICTORIA STREET  
BRUNSWICK, VICTORIA 3056

LANDSCAPE DRAWINGS			
No.	Title	Sheet	Scale
L000	TITLE SHEET	TITLE	N/A
L001	GENERAL NOTES & SCHEDULES	INFORMATION	N/A
L002	SITE PLAN - GROUND FLOOR	PLAN	1:200 @ A1
L003	SITE PLAN - LEVEL 1	PLAN	1:200 @ A1
L004	SITE PLAN - ROOF PLAN	PLAN	1:200 @ A1
L005	PUBLIC WORKS PLAN	PLAN	1:200 @ A1
L101	SETOUT - SHEET 1/4	PLAN	1:100 @ A1
L102	SETOUT - SHEET 2/4	PLAN	1:100 @ A1
L103	SETOUT - SHEET 3/4	PLAN	1:100 @ A1
L104	SETOUT - SHEET 4/4	PLAN	1:100 @ A1
L201	GRADING - SHEET 1/4	PLAN	1:100 @ A1
L202	GRADING - SHEET 2/4	PLAN	1:100 @ A1
L203	GRADING - SHEET 3/4	PLAN	1:100 @ A1
L204	GRADING - SHEET 4/4	PLAN	1:100 @ A1
L301	SURFACES - SHEET1/4	PLAN	1:100 @ A1
L302	SURFACES - SHEET2/4	PLAN	1:100 @ A1
L303	SURFACES - SHEET3/4	PLAN	1:100 @ A1
L304	SURFACES - SHEET4/4	PLAN	1:100 @ A1
L400	PLANTING SCHEDULES	SCHEDULE	N/A
L401	PLANTING - SHEET 1/4	PLAN	1:100 @ A1
L402	PLANTING - SHEET 2/4	PLAN	1:100 @ A1
L403	PLANTING - SHEET 3/4	PLAN	1:100 @ A1
L404	PLANTING - SHEET 4/4	PLAN	1:100 @ A1
L405	PLANTING - LEVEL 1	PLAN	1:200 @ A1
L406	PLANTING - ROOF SPACES	PLAN	1:200 @ A1

LANDSCAPE DETAILS, SCHEDULES & DOCUMENTS			
No.	Title	Sheet	Scale
L501	SECTIONS - CENTRAL COMMONS	SECTION	AS SHOWN
L502	SECTIONS - SOUTHERN LANEWAY	SECTION	AS SHOWN
L503	SECTIONS - NORTHERN LANEWAY	SECTION	AS SHOWN
L601	DETAILS - HARD DETAILS	DETAIL	AS SHOWN
L602	DETAILS - SOFT DETAILS	DETAIL	AS SHOWN
L603	DETAILS - DECK SEAT	DETAIL	AS SHOWN
L604	DETAILS - PLANTING	DETAIL	AS SHOWN
L605	DETAILS - BRICK SEATS	DETAIL	AS SHOWN
L606	DETAILS - ARBORS	DETAIL	AS SHOWN
L607	DETAILS - ARBORS	DETAIL	AS SHOWN
L700	MATERIAL SCHEDULE	SCHEDULE	N/A



REV NO	DATE	DESCRIPTION
PT1	08.02.24	Preliminary Tender Issue - Draft For Coordination
T1	29.02.24	For Tender Issue
H1	04.04.24	Heritage Victoria Issue

REV NO	DATE	DESCRIPTION
PT1	08.02.24	Preliminary Tender Issue - Draft For Coordination
T1	29.02.24	For Tender Issue
H1	04.04.24	Heritage Victoria Issue

PROJECT INFORMATION
VICTORIA STREET DEVELOPMENT 342-348 VICTORIA STREET BRUNSWICK, VIC 3029
ISSUE FOR TENDER

SHEET TITLE			
TITLE SHEET			
DRAWN BY AY	PLOT DATE 29.02.2024	SCALE @ A1 N/A	NORTH
APPROVED BB	PROJECT NO 2302	SHEET NO. L000	REV NO H1

# TECHNICAL NOTES

## Plan General Notes

- These drawing shall be read in conjunction with documentation provided by other consultants.
- These drawing shall be read in conjunction with the Landscape Specification (L800)
- Plan drawings containing general set out information can be obtained in Autocad format upon request from the contractor.
- The contractor and subcontractors shall verify all dimensions, lines, levels, and existing service locations prior to commencement on site, preparation of detail/ shop drawings and fabrication of construction/ building components.
- Digital Setout to be provided for accurate setout of all landscape items on request.

## Detail General Notes

- The contractor and subcontractors shall verify all dimensions, lines, levels, and existing service locations prior to commencement on site, preparation of detail/ shop drawings and fabrication of construction/ building components.
- The contractor must verify all dimensions prior to fabrication and installation. If any anomalies arise the contractor is to advise the superintendent immediately.
- All dimensions are in mm. Do not scale off drawings.
- Contractor is to provide shop drawings (CAD drafted to scale with adequate notes and dimensions for review and fabrication) to the Engineer and Landscape Architect for approval. Fixing components and details to be confirmed through shop drawing process.
- Contractor is to dispose of any contaminated material removed from site
- All proprietary items are to be installed and fixed in accordance with the manufacturers specifications and instructions.
- All work is to be carried out in accordance with all Work-cover requirements and occupational health and safety act regulations.

## Australian Standards:

Unless specified to the contrary, materials, installation and construction practice shall be in accordance with the requirements of the latest editions of the following standards as appropriate:

Steel materials, construction, fabrication and erection: To AS 4100.

Concrete materials, construction, fabrication and erection: To AS 3600.

Formwork design and construction, formed surfaces: To AS 3610 and AS 3610.1.

Plywood formwork: To AS 6669.

Profiled steel sheeting, including shear connectors: To AS 2327.1.

Residential ground slabs and footings: To AS 2870.

Concrete structures for retaining liquids: To AS 3735.

Precast members: Conform to the recommendations of NP:PCH (Precast concrete handbook).

- Transport, erection and installation: To AS 3850.
- Precast flooring: To AS 3600.
- Strand, bar and wire: To AS/NZS 4672.1.
- AS 1012 Methods of Testing Concrete
- AS 1302 Steel Reinforcing Bars for Concrete
- AS 1379 The Specification and Manufacture of Concrete
- AS 1554 SAA Structural Steel Welding Code
- AS 3600 Concrete Structures
- AS4100 Steel Structures

Where there are differences between the requirements of the Specification or the Drawings and the above Standards, the Specification or Drawings shall take precedence where more onerous.

Materials or operations not covered by the above Standard Codes and Specifications shall conform to the appropriate Australian Standard, or if no such Standard exists they shall conform to the Standards laid down by the ASTM.

Soil : On structure and raised planter

All soil profiles shall be to a proprietary Fytogreen system or approved equivalent. Refer Specification.

Soil : Deep soil

High quality imported soil, suitable for the establishment and on going viability of the selected vegetation, free of weed propagules and of contaminants and meeting all the criteria of natural soil and soil blends in AS4419 unless specified differently in this document.

## Irrigation

Sub-surface irrigation is to be designed and installed to all planted garden beds within public and private areas on title, including those on structure (across all levels) and those in deep soil areas, as documented by Irrigation Contractor.

The Irrigation Contractor shall determine the water demands, available water supply location, size, pressures and flows and design an automatic sub-surface irrigation system to service the garden bed areas and planters designated on the drawings.

The Irrigation Contractor is to coordinate with The Contractor to ensure the provision for all pipes and conduits from points of water supply to garden bed areas in order to facilitate the construction of the irrigation system.

The irrigation design will need to consider the joint use of mains water supply and collected stored water as per the Sustainability management plan. Refer to Civil documentation for storage tank, drainage and connection locations.

The Irrigation contractor is to design and supply a maintenance schedule compatible with the long term, successful use of the irrigation system including tasks such as inspection intervals, flushing requirements and any other routine maintenance activities required through the life of the system.

## Drainage

It is the responsibility of the contractor to ensure that all drainage meets manufacturers specifications. Refer Civil documentation for all drainage items.

## Concrete

Refer Engineers Drawings and Specifications for all Concrete performance strength, reinforcement and sub-base requirements.

Landscape Architect is responsible for colour and finish specifications only.

## Planting

All plants must be laid out in accordance with planting plans and approved by Landscape architect prior to installation.

## Stakes and ties

Generally: If plants are unable to be self supported or if stakes are damaged, stake or restake the plants as follows:

Drive stakes into the ground at least one third of their length, avoiding damage to the root system.

## Stake sizes:

- For plants ≥ 2.5 m high: Three 50 x 50 x 3000mm stakes per plant [finalise length on site]

- For plants 1 - 2.5 m high: Two 50 x 50 x 1800 mm stakes per plant.

- For plants < 1 m high: One 38 x 38 x 1200 mm stake per plant.

Do not single stake large plants.

Removal: If plants are robust with well developed systems and are strong enough to no longer require support, remove stakes and ties.

Tree anchoring system: Plant using nominated tree anchoring system and stake as shown on Landscape Architect's drawings.

## Weeding

Weeds: Unwanted plants and grasses considered invasive to the locality.

## Program:

Trees and shrubs: As required for planted, paved and mulched areas to be weed free when observed at bi-weekly intervals.

Method: Clear and keep clear vigorous ground covers 200 mm from the base of any shrub or tree.

Small areas: By hand.

Herbicide application: Avoid windy days or if rain is likely to follow within 12 hours. Apply: To the manufacturer's instructions and material data and safety sheets. When the weather is humid with moderate temperatures and maximum sunlight.

## Bicycle Parking

Bicycle parking dimensioned in accordance with Australian Standard for Parking Facilities – Bicycle Parking (AS2890.3) or otherwise justified by a suitably qualified professional to the satisfaction of the Responsible Authority.

## Existing Trees:

All trees west of the site marked on the endorsed plans as being retained must have a Tree Protection Zone (TPZ) to the satisfaction of the Responsible Authority. The fencing associated with this TPZ must meet the following requirements:

- **Extent**  
The tree protection fencing (TPF) is to be provided to the extent of the identified TPZ.  
If works are shown on any endorsed plan of this permit within the confines of the calculated TPZ, then the TPF must be taken in to only the minimum amount necessary to allow the works to be completed.

- **Fencing**  
All tree protection fencing required by this permit must be erected in accordance with the approved TPZ.  
The TPF must be erected to form a visual and physical barrier and must be a minimum height of 1.5 metres and of chain mesh or similar fence with 1.8 metre support posts (e.g. treated pine or similar) every 3-4 metres, including a top line of high visibility plastic hazard tape erected around the perimeter of the fence.

- **Signage**  
Fixed signs are to be provided on all visible sides of the TPF clearly stating "Tree Protection Zone – No Entry", to the satisfaction of the Responsible Authority.

- **Irrigation**  
The area within the TPZ and TPF must be irrigated during the summer months with 1 litre of clean water for every 1cm of trunk girth measured at the soil/trunk interface on a weekly basis.

- **Access to TPZ**  
Should temporary access be necessary within the Tree Protection Zone during the period of construction, the Responsible Authority must be informed prior to relocating the fence (as it may be necessary to undertake additional root protection measures such as bridging over with timber).

## Raised Planters:

Raised planter construction is to include, but not necessarily be limited to, the supply and installation of agricultural drains, waterproofing membranes, drainage cells at base, filter fabric, planting medium, mulch and irrigation. Planters must be effectively tanked and lined with core flute to prevent leaking. Drainage cells are to be provided at the base of the planter and are to be covered with a layer of filter fabric and a 100mm deep layer of Hydrocell Hard foam RG30.

A drainage outlet is to be installed in the base of the planter with the floor of the planter sloped towards it. Supply soil mix and spread evenly. Compact lightly and evenly in 150mm layers. Avoid differential subsidence and excess compaction and produce a finished surface that is graded evenly and ready for planting. Allow for min 50mm layer of specified mulch to top of beds and a finished level 25-50mm below the planter rim. Drip irrigation as specified is to be installed beneath the mulch layer.

## WARNING AND DISCLAIMER

Beware of underground services.

The locations of underground services are approximate only and their exact location and level shall be proven on site by contractor prior to commencing works. No guarantee is given that all existing services are show.

Site setout shall be to Australian Map Grid (AMG). An electronic format of the drawings will be issued as an Autocad 2D file for the purposes of surveyed setout. Such files shall be issued under Superintendent written instruction.

All levels grades and dimensions shall be confirmed onsite prior to construction of works. If any discrepancies arise such instances shall be directed to the Superintendent for clarification and written confirmation.

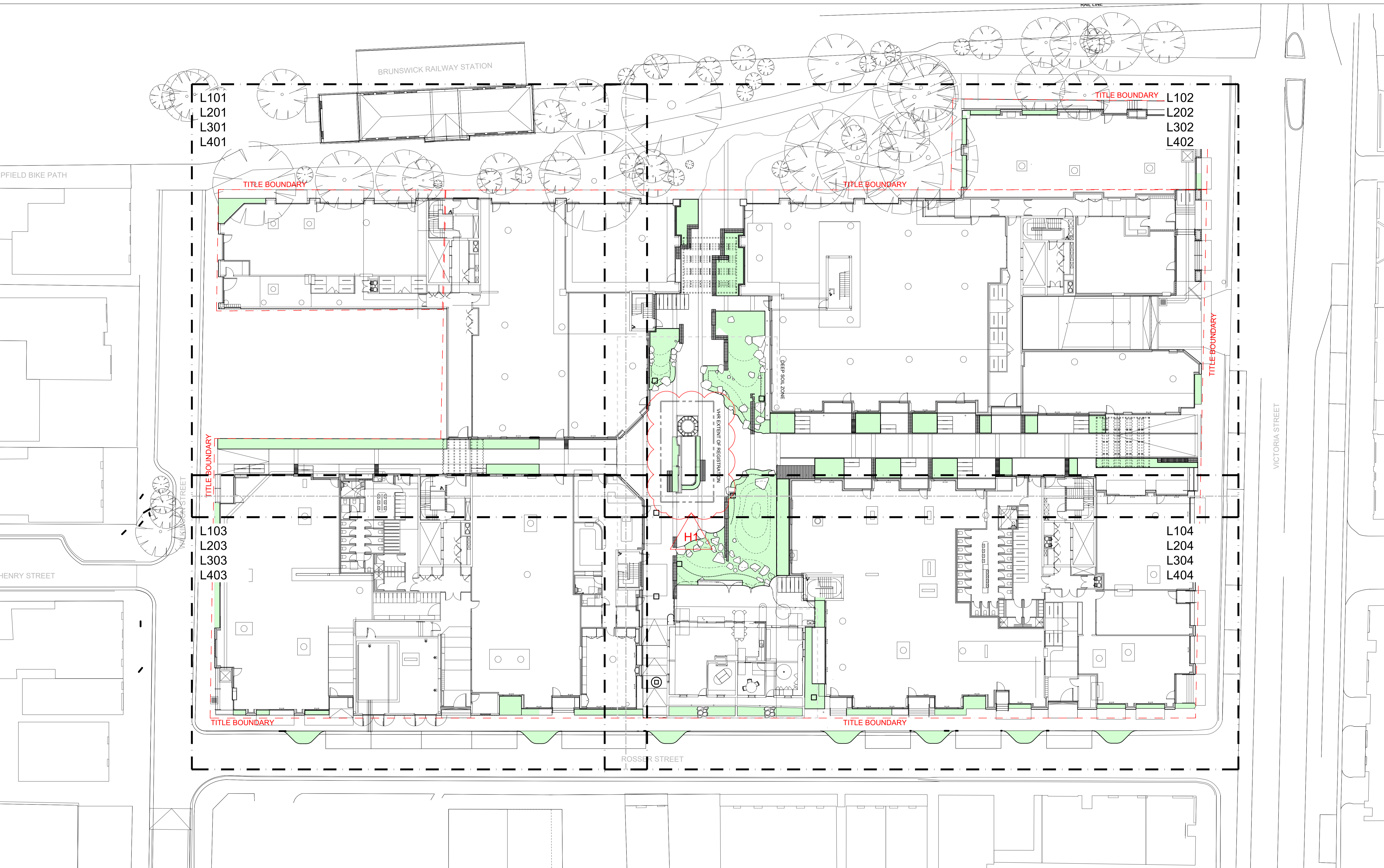
Landscape Drawings shall be read in conjunction with all other consultant drawings and specifications and other written instructions as may be issued through the course of the tender and contract.

## NOTES

REV NO	DATE	DESCRIPTION
PT1	08.02.24	Preliminary Tender Issue - Draft For Coordination
T1	29.02.24	For Tender Issue
H1	04.04.24	Heritage Victoria Issue

PROJECT INFORMATION			SHEET TITLE	
<b>VICTORIA STREET DEVELOPMENT</b>			<b>GENERAL NOTES &amp; SCHEDULES</b>	
342-348 VICTORIA STREET BRUNSWICK, VIC 3029				
DRAWN BY	PLOT DATE	SCALE @ A1	NORTH	
<b>AY</b>	<b>29.02.2024</b>	N/A		
ISSUE	PROJECT NO	SHEET NO.	REV NO	
<b>FOR TENDER</b>	<b>2302</b>	<b>L001</b>	H1	

# mala



**NOTES**

- H1 - VHR extent of registration text added

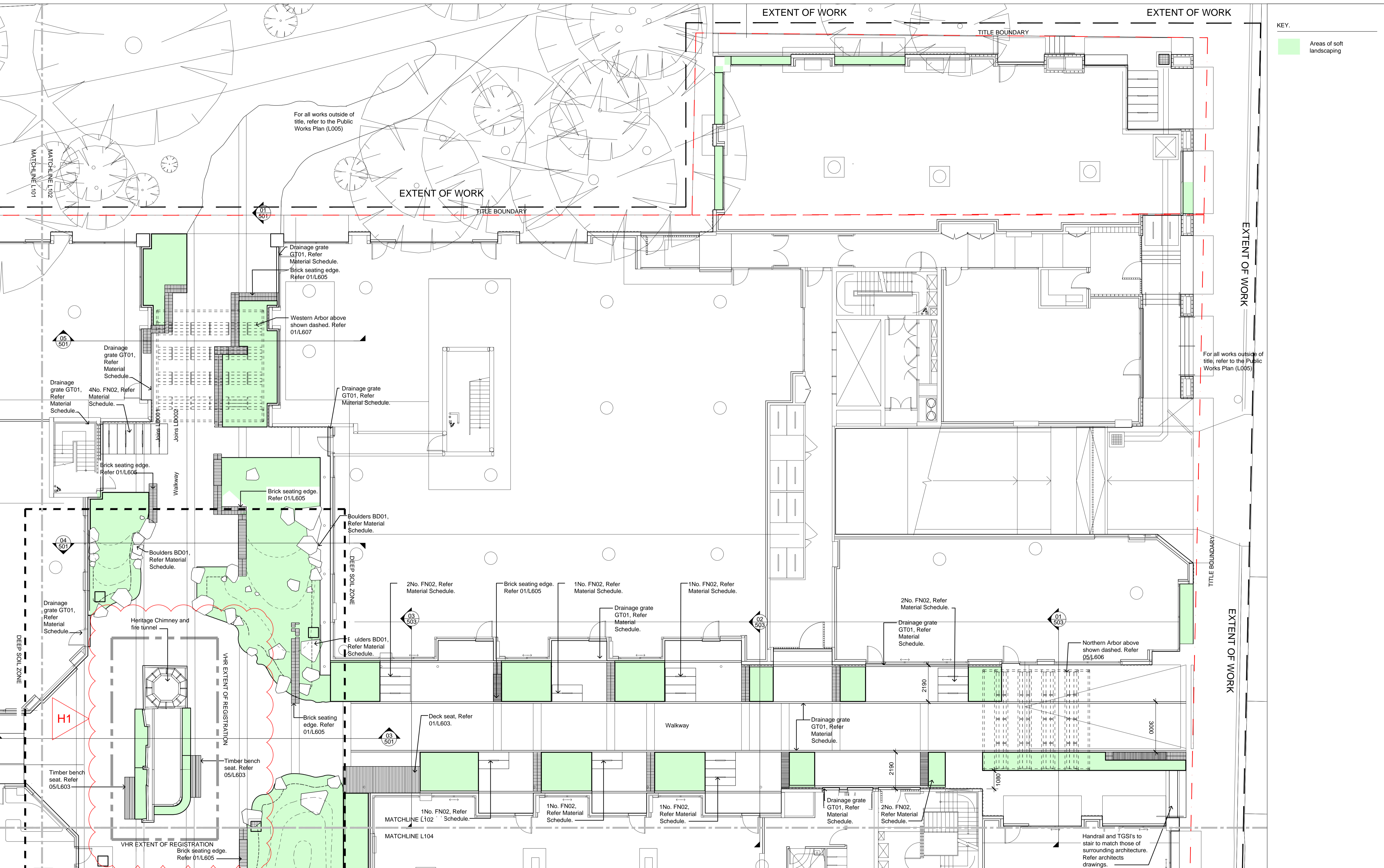
REV NO	DATE	DESCRIPTION
PT1	08.02.24	Preliminary Tender Issue - Draft For Coordination
T1	29.02.24	For Tender Issue
H1	04.04.24	Heritage Victoria Issue

**PROJECT INFORMATION**  
**VICTORIA STREET DEVELOPMENT**  
 342-348 VICTORIA STREET  
 BRUNSWICK, VIC 3029

**ISSUE**  
**FOR TENDER**

**SHEET TITLE**  
**SITE PLAN - GROUND FLOOR**

<b>DRAWN BY</b> AY	<b>PLOT DATE</b> 29.02.2024	<b>SCALE @ A1</b> 1:200 @ A1	<b>NORTH</b> ↗
<b>APPROVED</b> BB	<b>PROJECT NO</b> 2302	<b>SHEET NO.</b> <b>L002</b>	<b>REV NO</b> H1



KEY.  
 Areas of soft landscaping



**NOTES**

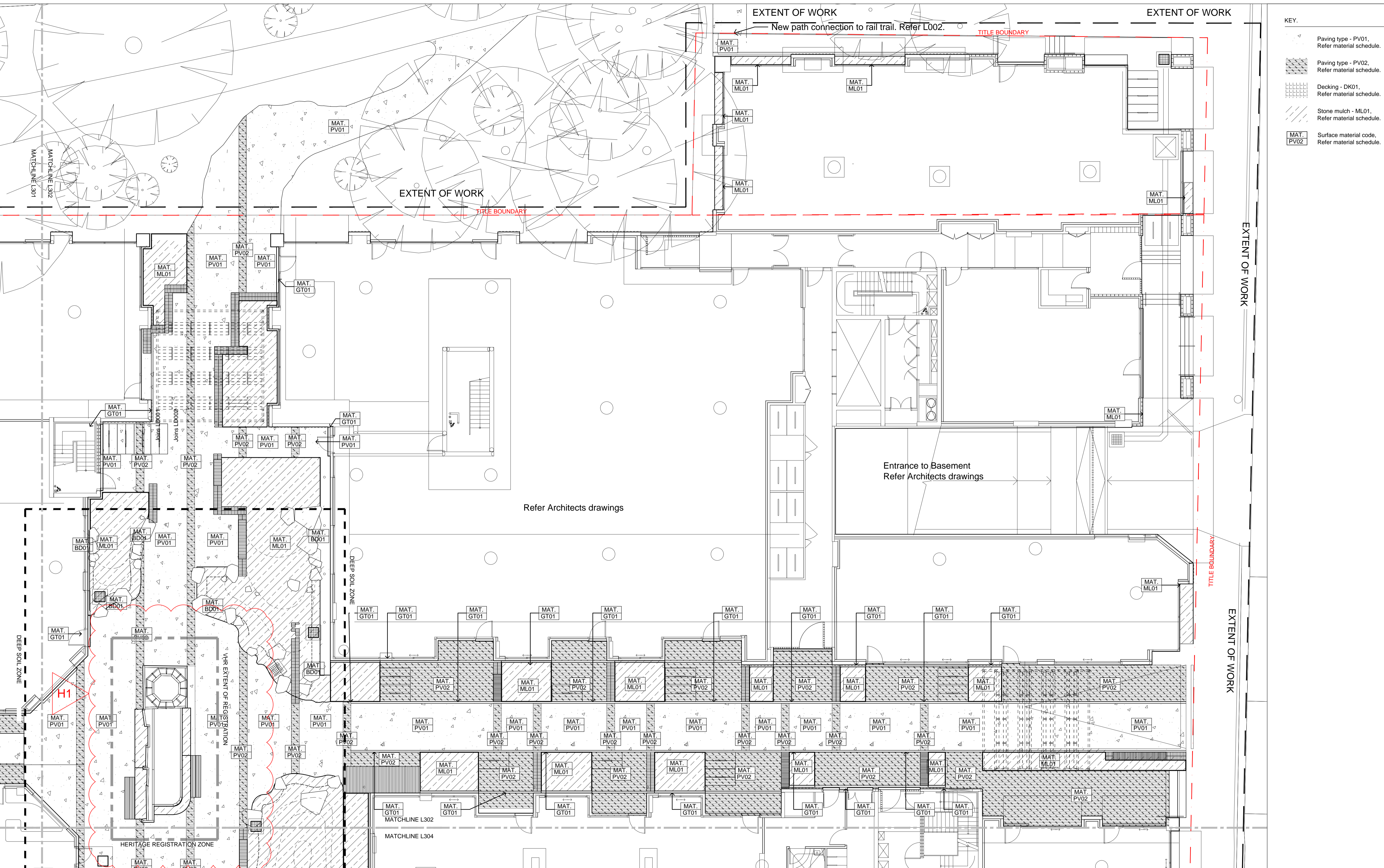
- H1 - VHR extent of registration text added

REV NO	DATE	DESCRIPTION
PT1	08.02.24	Preliminary Tender Issue - Draft For Coordination
T1	29.02.24	For Tender Issue
H1	04.04.24	Heritage Victoria Issue

**PROJECT INFORMATION**  
**VICTORIA STREET DEVELOPMENT**  
 342-348 VICTORIA STREET  
 BRUNSWICK, VIC 3029

**SHEET TITLE**  
**SETOUT**

DRAWN BY	PLOT DATE	SCALE @ A1	NORTH
AY	29.02.2024	1:100 @ A1	↗
APPROVED	PROJECT NO	SHEET NO.	REV NO
BB	2302	L102	H1



**KEY.**

	Paving type - PV01. Refer material schedule.
	Paving type - PV02. Refer material schedule.
	Decking - DK01. Refer material schedule.
	Stone mulch - ML01. Refer material schedule.
	Surface material code. Refer material schedule.



**NOTES**

- H1 - VHR extent of registration text added

REV NO	DATE	DESCRIPTION
PT1	08.02.24	Preliminary Tender Issue - Draft For Coordination
T1	29.02.24	For Tender Issue
H1	04.04.24	Heritage Victoria Issue

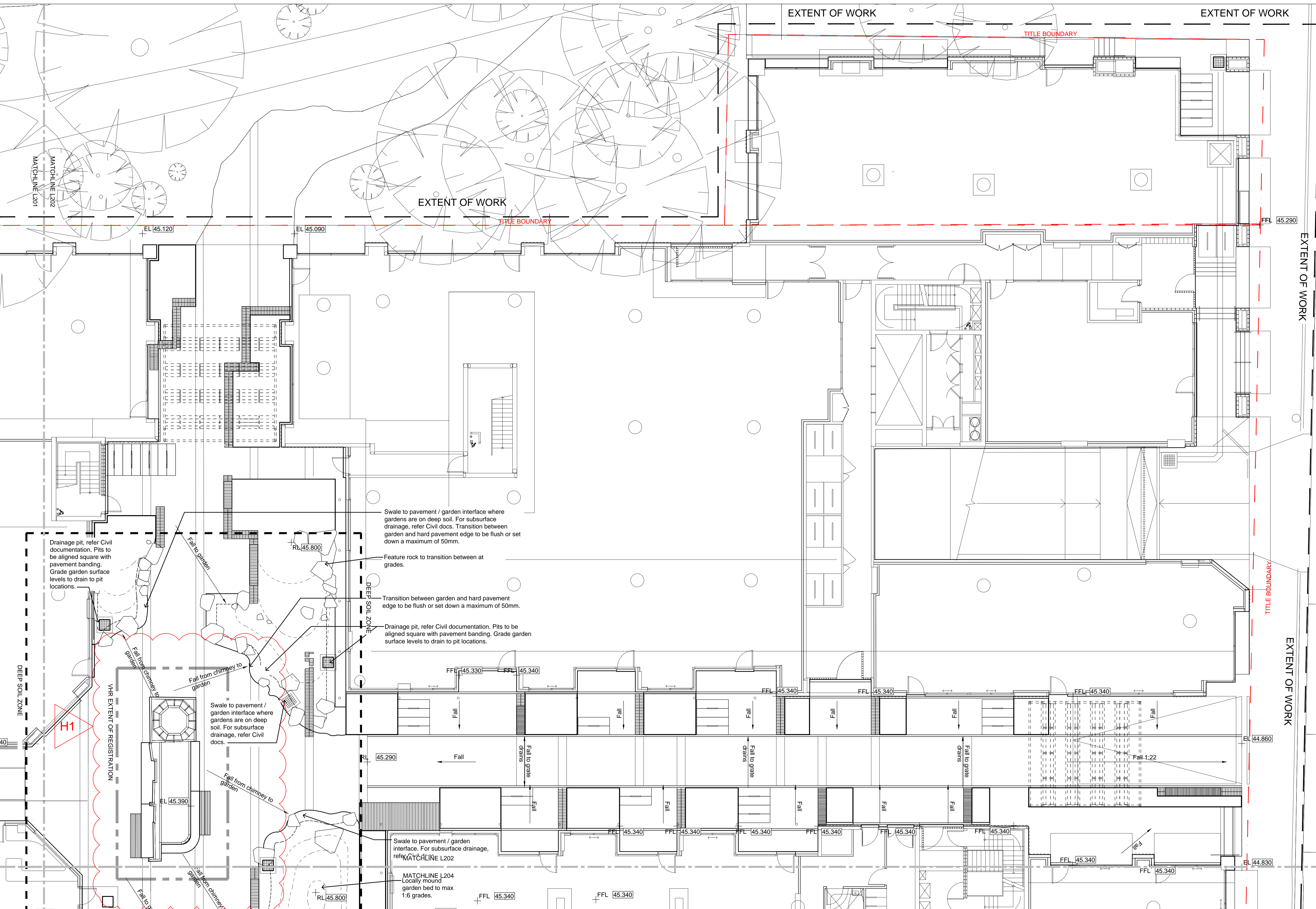
**PROJECT INFORMATION**

**VICTORIA STREET DEVELOPMENT**  
 342-348 VICTORIA STREET  
 BRUNSWICK, VIC 3029

**ISSUE**  
 FOR TENDER

**SHEET TITLE**  
**SURFACES**

DRAWN BY AY	PLOT DATE 29.02.2024	SCALE @ A1 1:100 @ A1	NORTH ↗
APPROVED BB	PROJECT NO 2302	SHEET NO. <b>L302</b>	REV NO H1



- KEY.
- Deep soil zone boundary
  - RL 45.22 Proposed level
  - EL 45.22 Existing level
  - FFL 45.340 Finished floor level
  - Fall 1:21 Proposed fall

NOTE: All falls in hard pavement trafficable areas should be a minimum of 1:100 and not exceed 1:70 unless otherwise approved by the Civil engineer and Landscape Architect.

Fall away from all building entry thresholds at a minimum of 1:100.

For all drainage elements on deep soil, refer to Civil Documentation. Drainage items shown on these plans are for coordination and alignment only.

For all drainage elements on Structure, refer to Hydraulic Engineers Documentation. Drainage items shown on these plans are for coordination and alignment only.



**NOTES**

- H1 - VHR extent of registration text added

REV NO	DATE	DESCRIPTION
PT1	08.02.24	Preliminary Tender Issue - Draft For Coordination
T1	29.02.24	For Tender Issue
H1	04.04.24	Heritage Victoria Issue

**PROJECT INFORMATION**  
**VICTORIA STREET DEVELOPMENT**  
 342-348 VICTORIA STREET  
 BRUNSWICK, VIC 3029

**SHEET TITLE**  
**GRADING**

DRAWN BY	PLOT DATE	SCALE @ A1	NORTH
AY	29.02.2024	1:100 @ A1	
APPROVED	PROJECT NO	SHEET NO.	REV NO
BB	2302	L202	H1

### Northern Lane Pallette

BOTANICAL NAME	COMMON NAME	SIZE AT MATURITY HxW (m)	POT SIZE (install)
----------------	-------------	--------------------------	--------------------

#### Trees

<i>Brachychiton rupestris</i>	QLD Bottle Tree	15 x 5	40L
-------------------------------	-----------------	--------	-----

#### Low/ Meduim planting Mix density: 6 P/Sqm

<i>Dichondra argenea</i>	Silver falls	0.1 x 0.8	140mm
<i>Banksia blechnifolia</i>	Ground cover banksia	0.5 x 2-4	140mm
<i>Maireana sedifolia</i>	Blue Bush	1 x 1	140mm
<i>Osteospermum sp.</i>	African daisies	0.25 x 0.5	140mm
<i>Alyxia buxifolia</i>	Sea Box	0.5 x 0.5	140mm
<i>Doryanthes excelsa</i>	Gymea Lily	1.5 x 1.5	140mm
<i>Lotus berthelotii</i>	Parrot-beak	0.2 x 0.6	140mm

#### Low/ Meduim planting Mix density: @500 Cts along climbing frames

<i>Wisteria floribunda</i>	Japanese Wisteria	n/a	200mm
<i>Pandorea pandorana</i>	Wonga Wonga Vine	n/a	200mm

### Southern Lane Pallette

BOTANICAL NAME	COMMON NAME	SIZE AT MATURITY HxW (m)	POT SIZE (install)
----------------	-------------	--------------------------	--------------------

#### Low/ Meduim planting Mix density: 6 P/Sqm

<i>Asplenium scolopendrium</i>	Hearts tongue fern	0.5 x 0.5	140mm
<i>Asparagus densiflorus 'Myersii'</i>	Foxtail Fern	0.6 x 0.6	140mm
<i>Thaumatococcus xanadu</i>	Filodendro Xanadu	1 x 1	140mm
<i>Alcantarea imperialis</i>	bromeliad	1 x 1	140mm
<i>Vinca minor alba</i>	Creeping Myrtle	0.5 x 1.5	140mm
<i>Zamia furfuracea</i>	Cardboard Palm	0.5 x 1	140mm
<i>Dichondra repens</i>	Kidney weed	0.1 x 1	140mm

#### Climbers Mix density: @500 Cts along climbing frames

<i>Schizophragma hydrangeoides</i>	Japanese Hydrangea Vine	n/a	200mm
<i>monstera deliciosa</i>		n/a	200mm

### Central Garden Pallette

BOTANICAL NAME	COMMON NAME	SIZE AT MATURITY HxW (m)	POT SIZE (install)
----------------	-------------	--------------------------	--------------------

#### Trees

<i>Toona ciliata</i>	Australian Red Cedar	25+ x 12+	40L
<i>Tristaniopsis laurina Lushious</i>	Water gum	7 – 12m x 6m	40L or 100L (for street trees)
<i>Fraxinus pennsylvanica</i>	Urdbell' Urbanite	11 x 8	40L

#### Low/ Meduim planting Mix density: 6 P/Sqm

<del><i>Asplenium australasicum</i></del>	<del>Bird's nest fern</del>	<del>1 x 1</del>	<del>140mm</del>
<del><i>Cyathea cooperi</i></del>	<del>lacy tree fern</del>	<del>3 x 2</del>	<del>140mm</del>
<i>Dichondra argenea</i>	Silver falls	0.1 x 0.8	140mm
<i>Dichondra repens</i>	Kidney weed	0.1 x 1	140mm
<del><i>Alocasia brisbanensis</i></del>	<del>cunjevoi</del>	<del>1 x 1</del>	<del>140mm</del>
<del><i>Doodia australis</i></del>	<del>Common Rasp Fern</del>	<del>0.5 x 0.5</del>	<del>140mm</del>
<del><i>Zamia furfuracea</i></del>	<del>Cardboard Palm</del>	<del>0.5 x 1</del>	<del>140mm</del>

#### Climbers

#### Mix density: @500 Cts along climbing frames

<i>H1 Hardenbergia violaceae</i>	Purple Coral Pea	n/a	200mm
<i>Schizophragma hydrangeoides</i>	Japanese Hydrangea Vine	n/a	200mm
<i>Cissus antarctica</i>	Kangaroo Vine	n/a	200mm

### Central Sunken Garden Pallette

BOTANICAL NAME	COMMON NAME	SIZE AT MATURITY HxW (m)	POT SIZE (install)
----------------	-------------	--------------------------	--------------------

#### Trees

<i>Toona ciliata</i>	Australian Red Cedar	25+ x 12+	40L
<i>Tristaniopsis laurina Lushious</i>	Water gum	7 – 12m x 6m	40L or 100L (for street trees)
<i>Fraxinus pennsylvanica</i>	Urdbell' Urbanite	11 x 8	40L

#### Low/ Meduim planting Mix density: 6 P/Sqm

<i>Crinum pedunculatum</i>	Swamp lily	1 x 1	140mm
<i>Dianella</i>	Dianella Breeze	0.6 x 0.6	140mm
<i>Dichondra repens</i>	Kidney weed	0.1 x 1	140mm
<i>Dianella tasmanica</i>	Cherry red	1 x 1	140mm
<i>Dianella</i>	King alfred	0.7 x 0.7	140mm
<i>Ficinia nodosa</i>	Club rush	0.8 x 0.8	140mm
<i>Centella asiatica</i>	Asiatic pennywort	0.25 x 0.4	140mm

### GRC Planter Pallette

BOTANICAL NAME	COMMON NAME	SIZE AT MATURITY HxW (m)	POT SIZE (install)
----------------	-------------	--------------------------	--------------------

#### Low/ Meduim planting Mix density: 6 P/Sqm

<i>Grevillea juniperina</i>	'Gold Cluster'	0.4 x 1.5	140mm
<i>Dichondra argenea</i>	Silver falls	0.1 x 0.8	140mm
<i>Rosmarinus officinalis</i>	'Prostrate' Rosemary	0.5 x 1	140mm
<i>Lotus berthelotii</i>	Parrot-beak	0.2 x 0.6	140mm
<i>Rhapiolepis</i>	Snow maiden	1 x 1	140mm
<i>Casuarina 'Cousin It'</i>	Cousin It	0.25 x 1	140mm

#### Climbers

#### Mix density: @500 Cts along climbing frames

<i>Wisteria floribunda</i>	Japanese Wisteria	n/a	200mm
<i>H1 Hardenbergia violaceae</i>	Purple Coral Pea	n/a	200mm
<i>Trachelospermum asiaticum</i>	Japanese star jasmine	n/a	200mm
<i>Vitis vinifera</i>	Ornimetal Grape	n/a	200mm

### Roof Profile Pallette

BOTANICAL NAME	COMMON NAME	SIZE AT MATURITY HxW (m)	POT SIZE (install)
----------------	-------------	--------------------------	--------------------

#### Low/ Meduim planting Mix density: 6 P/Sqm

<i>Aptenia cordifolia</i>	Baby Sun Rose	0.15 x 0.6	140mm
<i>Carpobrotus glaucescens</i>	Pigface	0.1 x 1	140mm
<i>Myoporum insulare 'Prostrate'</i>	Ground Cover Boobialla	0.5 x 1	140mm
<i>Myoporum parvifolium (broad leaf)</i>	Creeping Boobialla	0.3 x 1	140mm
<i>disphyma crassifolia</i>	Creeping dew plant	0.2 x 1	140mm
<i>Banksia blechnifolia</i>	Ground cover banksia	0.5 x 2-4	140mm

### Rooftop Garden Pallette

BOTANICAL NAME	COMMON NAME	SIZE AT MATURITY HxW (m)	POT SIZE (install)
----------------	-------------	--------------------------	--------------------

#### Low/ Meduim planting Mix density: 6 P/Sqm

<i>Banksia blechnifolia</i>	Ground cover banksia	0.5 x 2-4	140mm
<i>Dichondra argenea</i>	Silver falls	0.1 x 0.8	140mm
<i>Leucophyta brownii</i>	Cushion bush	0.8 x 0.8	140mm
<i>Senecio mandraliscae</i>	blue chalksticks	0.2 x 1	140mm
<i>Lomandra</i>	Seascape	0.5 x 0.75	140mm
<i>Dichondra argenea</i>	Silver falls	0.1 x 0.8	140mm
<i>Rosmarinus officinalis</i>	'Prostrate' Rosemary	0.5 x 1	140mm
<i>Casuarina 'Cousin It'</i>	Cousin It	0.25 x 1	140mm
<i>Doryanthes excelsa</i>	Gymea Lily	1.5 x 1.5	140mm
<i>Alyxia buxifolia</i>	Sea Box	0.5 x 0.5	140mm

#### Climbers

#### Mix density: @500 Cts along climbing frames

<i>Wisteria floribunda</i>	Japanese Wisteria	n/a	200mm
<i>H1 Hardenbergia violaceae</i>	Purple Coral Pea	n/a	200mm
<i>Trachelospermum asiaticum</i>	Japanese star jasmine	n/a	200mm
<i>Vitis vinifera</i>	Ornimetal Grape	n/a	200mm

### Cottage Garden Pallette

BOTANICAL NAME	COMMON NAME	SIZE AT MATURITY HxW (m)	POT SIZE (install)
----------------	-------------	--------------------------	--------------------

#### Low/ Meduim planting Mix density: 6 P/Sqm

<i>Lomandra longifolia 'Tanika'</i>	Mat Rush	0.5-0.6 x 0.65	140mm
<i>Lomandra confertifolia 'Seascape'</i>	Lomandra Seascape	0.5 x 0.75	140mm
<i>Dianella tasmanica</i>	Tasman Flax-lily	0.6-1.5 x 0.5-2	140mm

### Estimated Canopy Cover

#### Trees at maturity

Species	Number proposed	Estimated canopy size at maturity (Diameter)	Total canopy area (m2)
<i>Toona ciliata</i>	1	12m	113
<i>Tristaniopsis laurina</i>			
<i>Lushious</i>	8	6m	224
<i>Fraxinus pennsylvanica</i>	3	8m	150
<i>Brachychiton rupestris</i>	8	5m	156
<b>Total tree canopy</b>			<b>643</b>

#### Arbor canopy at maturity

Arbor location	Arbor size (m2)
Northern Arbor	37.14
Western Arbor	42.24
Southern Arbor	20.16
<b>Arbor Total</b>	<b>99.54</b>

<b>Site ground plane canopy total (m2)</b>	<b>742.54</b>
--	---------------

# mala

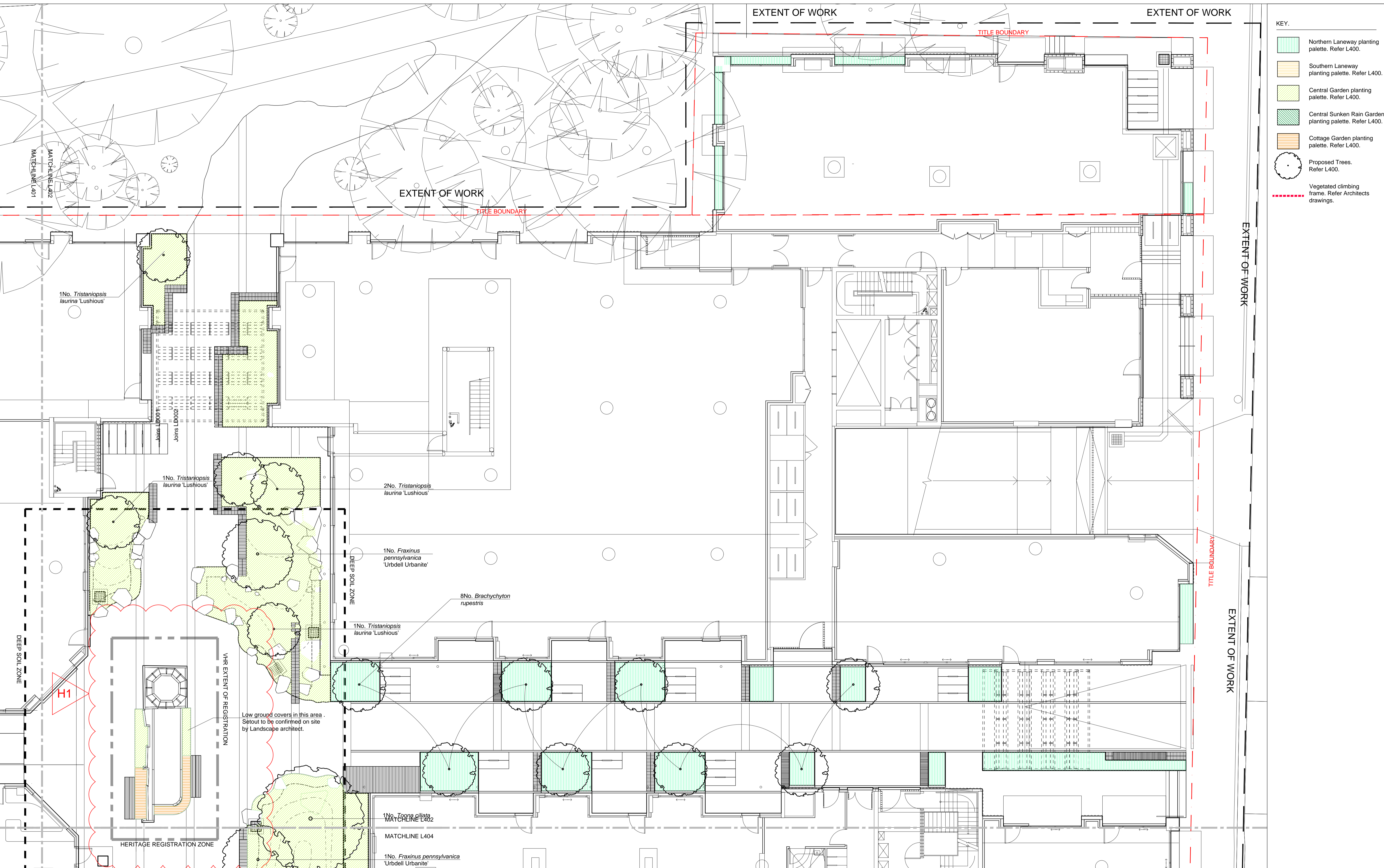
#### NOTES

1. H1 - Species mixes within VHR registration extents areas highlighted and unsuitable species removed.

REV NO	DATE	DESCRIPTION
PT1	08.02.24	Preliminary Tender Issue - Draft For Coordination
T1	29.02.24	For Tender Issue
H1	04.04.24	Heritage Victoria Issue

PROJECT INFORMATION	
<b>VICTORIA STREET DEVELOPMENT</b>	
342-348 VICTORIA STREET BRUNSWICK, VIC 3029	
ISSUE	
<b>FOR TENDER</b>	

SHEET TITLE			
<b>PLANTING</b>			
DRAWN BY	PLOT DATE	SCALE @ A1	NORTH
<b>AY</b>	<b>29.02.2024</b>	N/A	
APPROVED	PROJECT NO	SHEET NO.	REV NO
<b>BB</b>	<b>2302</b>	<b>L400</b>	H1



- KEY.
- Northern Laneway planting palette. Refer L400.
  - Southern Laneway planting palette. Refer L400.
  - Central Garden planting palette. Refer L400.
  - Central Sunken Rain Garden planting palette. Refer L400.
  - Cottage Garden planting palette. Refer L400.
  - Proposed Trees. Refer L400.
  - Vegetated climbing frame. Refer Architects drawings.

# mala

**NOTES**  
 1. H1 - VHR extent of registration text added

REV NO	DATE	DESCRIPTION
PT1	08.02.24	Preliminary Tender Issue - Draft For Coordination
T1	29.02.24	For Tender Issue
H1	04.04.24	Heritage Victoria Issue

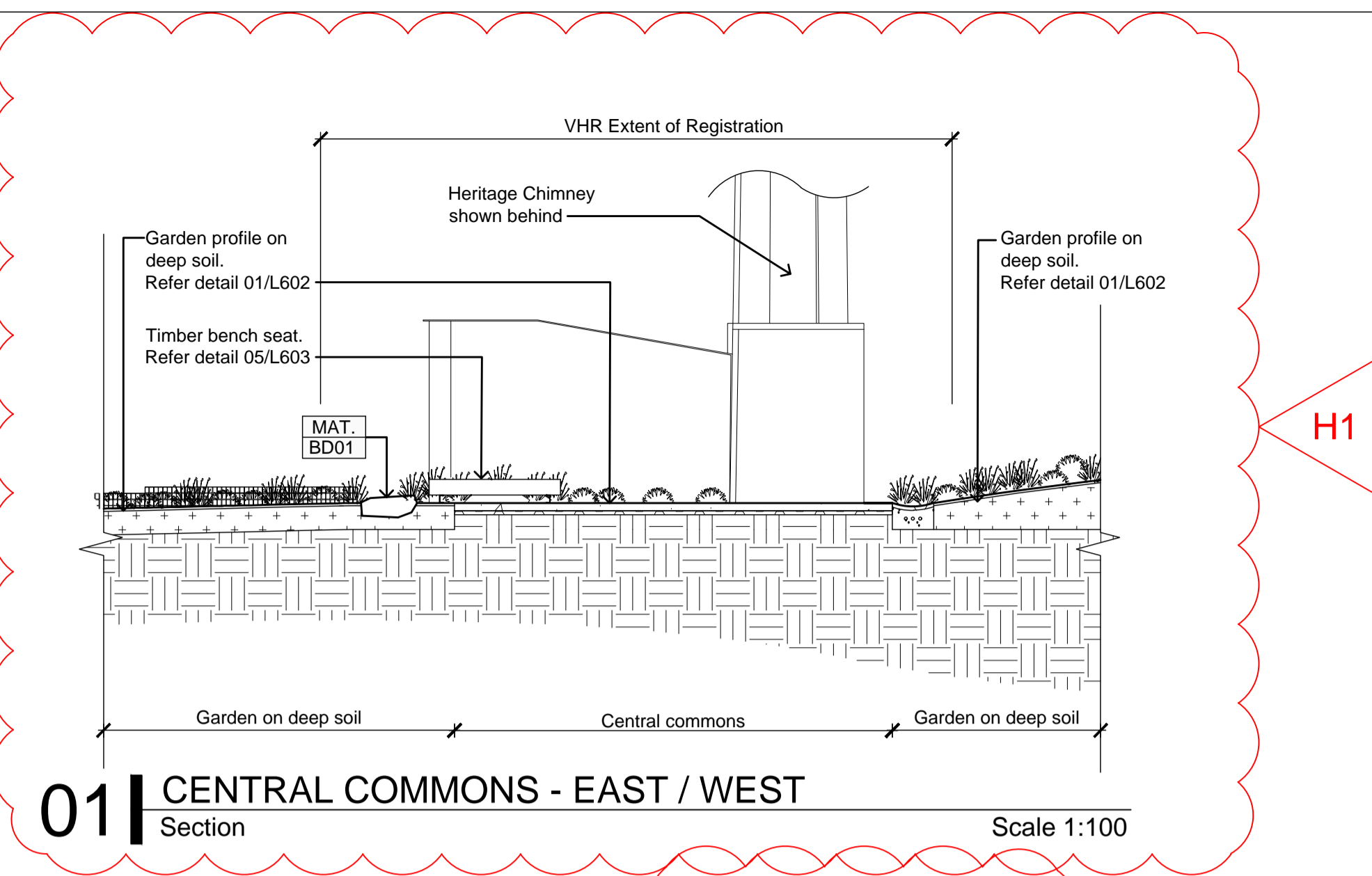
**PROJECT INFORMATION**  
**VICTORIA STREET DEVELOPMENT**  
 342-348 VICTORIA STREET  
 BRUNSWICK, VIC 3029

**SHEET TITLE**  
**PLANTING**

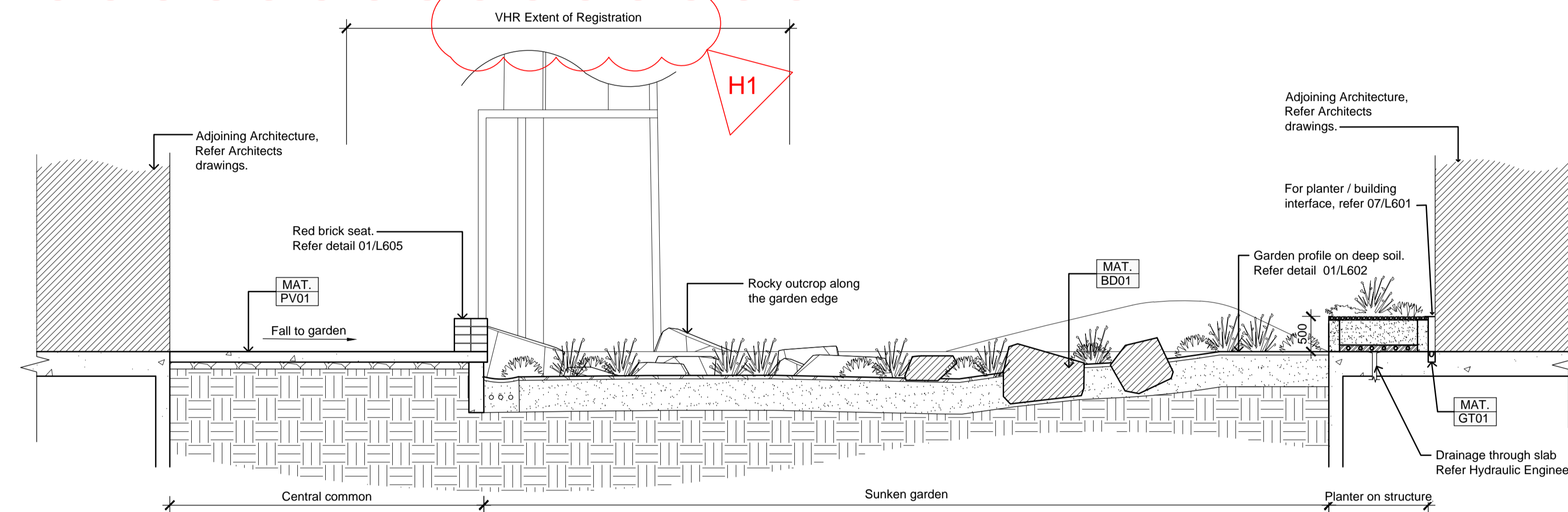
<b>DRAWN BY</b> AY	<b>PLOT DATE</b> 29.02.2024	<b>SCALE @ A1</b> 1:100 @ A1	<b>NORTH</b> ↑
<b>APPROVED</b> BB	<b>PROJECT NO</b> 2302	<b>SHEET NO.</b> <b>L402</b>	<b>REV NO</b> H1

**ISSUE**  
FOR TENDER

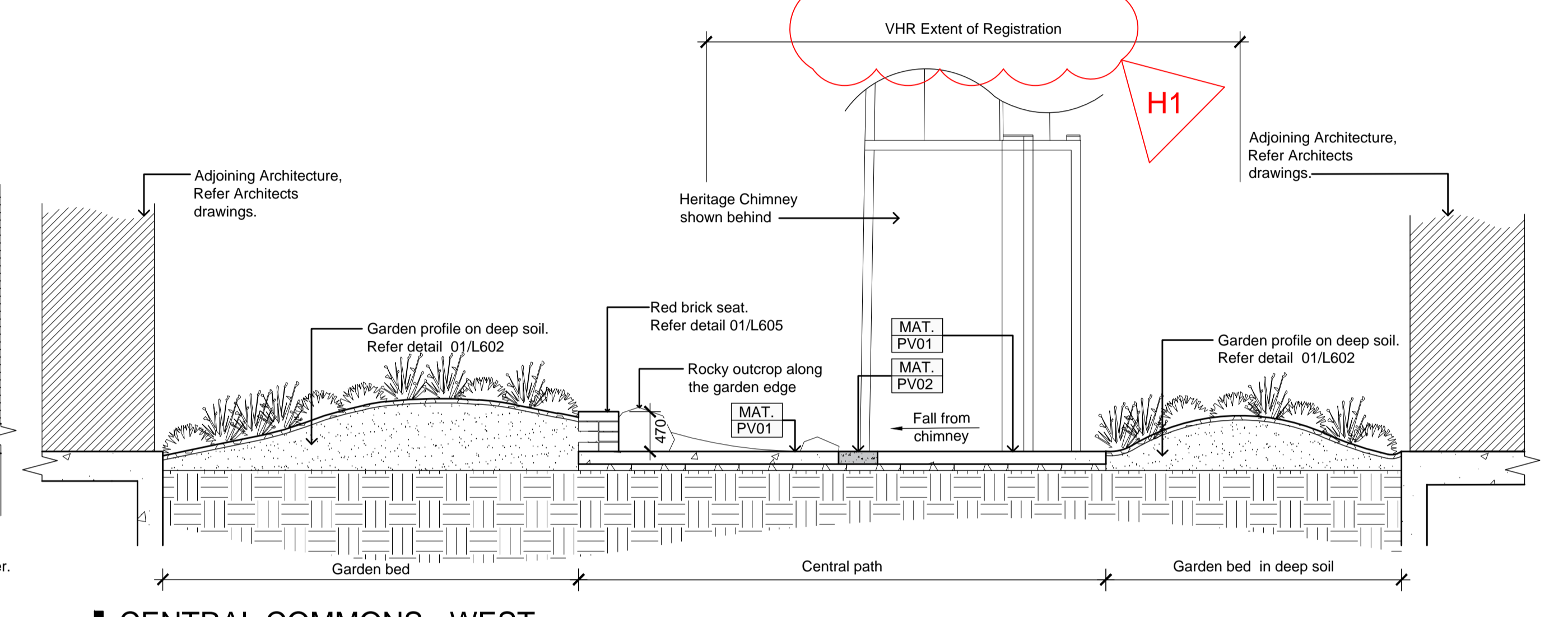




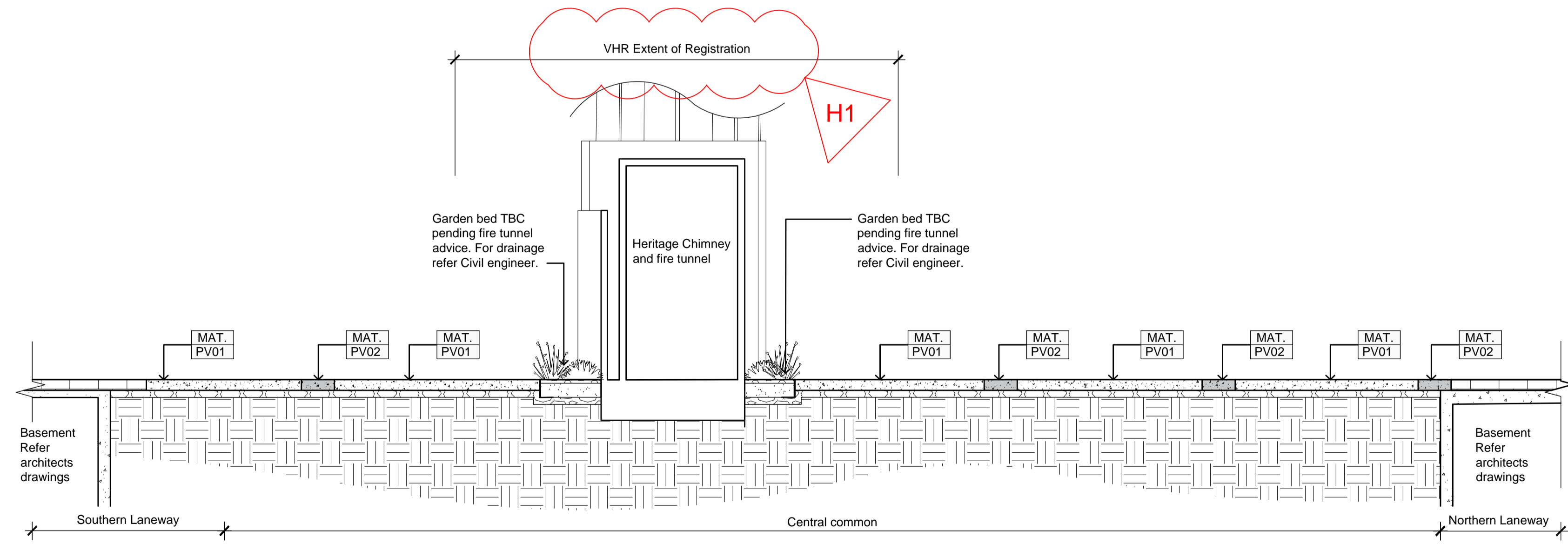
**01** CENTRAL COMMONS - EAST / WEST  
Section Scale 1:100



**02** CENTRAL COMMONS - EAST  
Section Scale 1:50



**04** CENTRAL COMMONS - WEST  
Section Scale 1:50



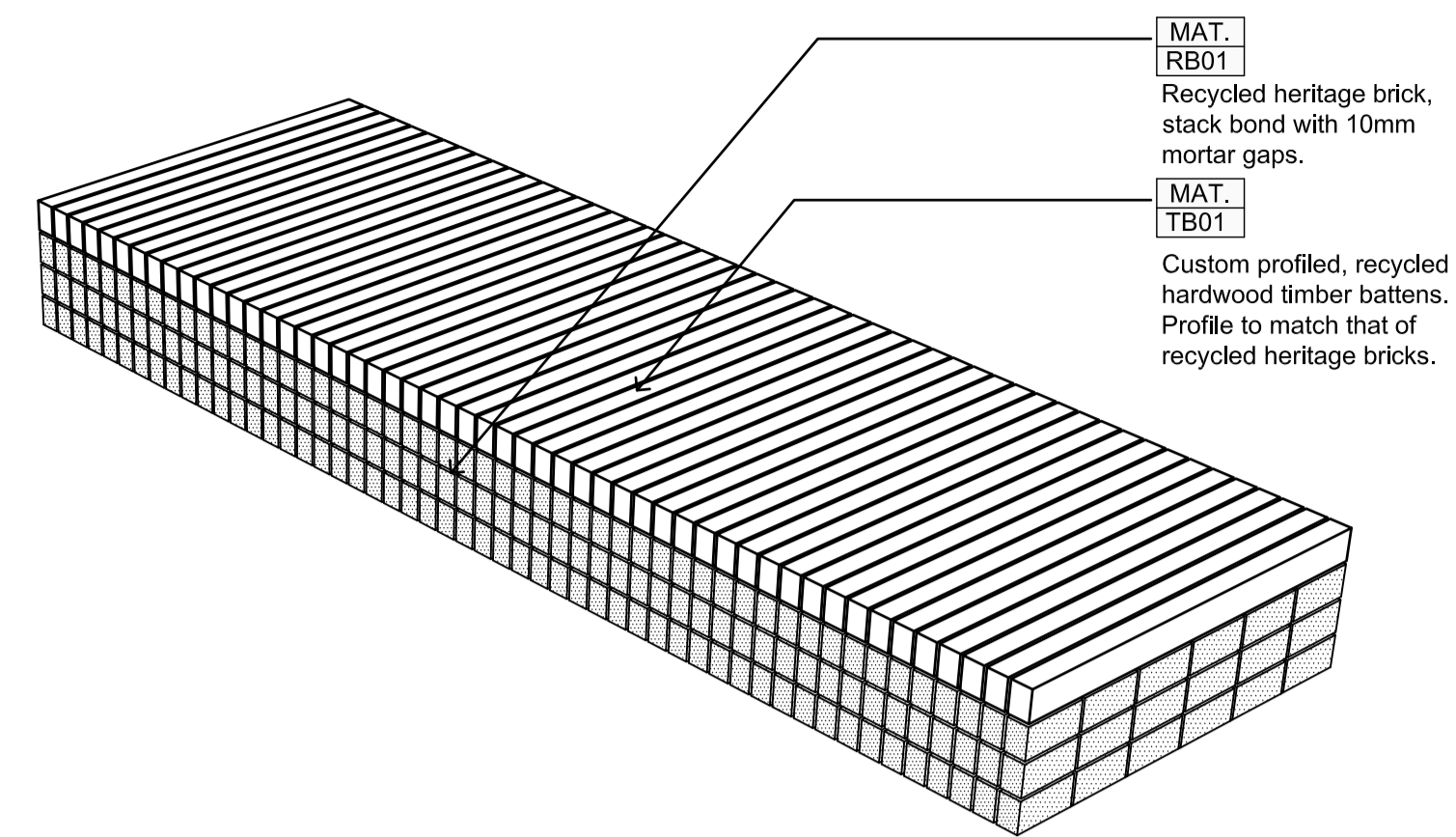
**03** CENTRAL COMMONS - BETWEEN LANEWAYS  
Section Scale 1:50



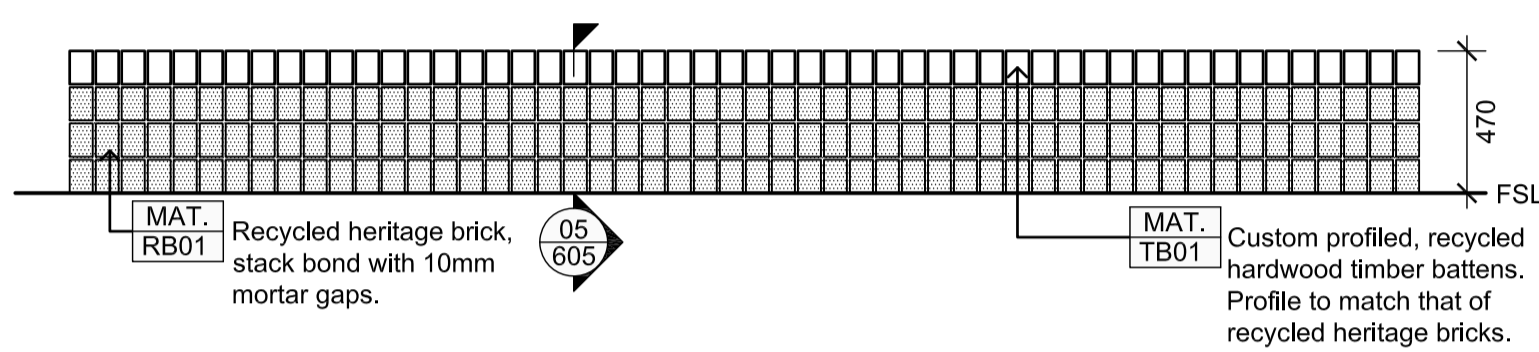
**NOTES**  
1. H1 - Section 01 shortened to highlight VHR extents. VHR Extent of Registration areas annotated on other sections.

REV NO	DATE	DESCRIPTION
PT1	08.02.24	Preliminary Tender Issue - Draft For Coordination
T1	29.02.24	For Tender Issue
H1	04.04.24	Heritage Victoria Issue

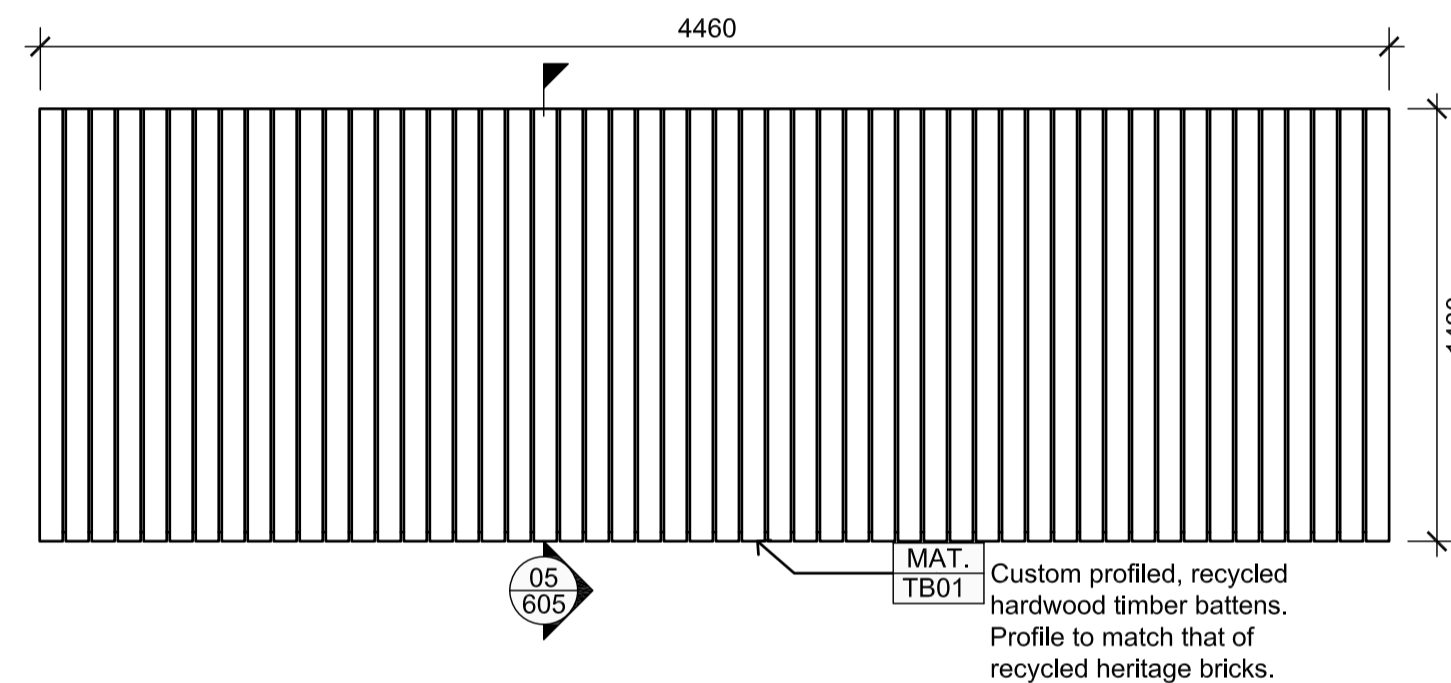
PROJECT INFORMATION		SHEET TITLE	
VICTORIA STREET DEVELOPMENT 342-348 VICTORIA STREET BRUNSWICK, VIC 3029		<b>SECTIONS - CENTRAL COMMONS</b>	
DRAWN BY	PLOT DATE	SCALE @ A1	NORTH
AY	29.02.2024	As shown	
ISSUE	PROJECT NO	SHEET NO.	REV NO
FOR TENDER	2302	L501	H1



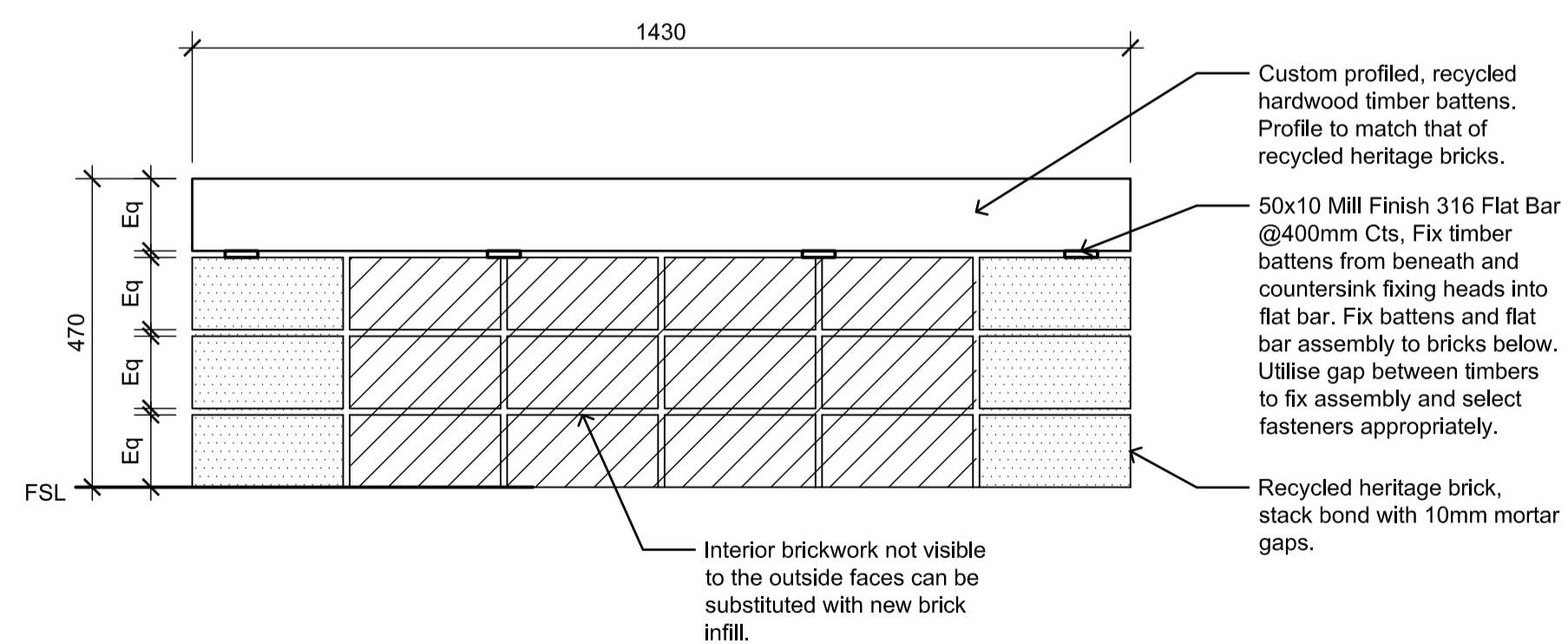
**01** BRICK DECK SEAT  
Plan Scale 1:25



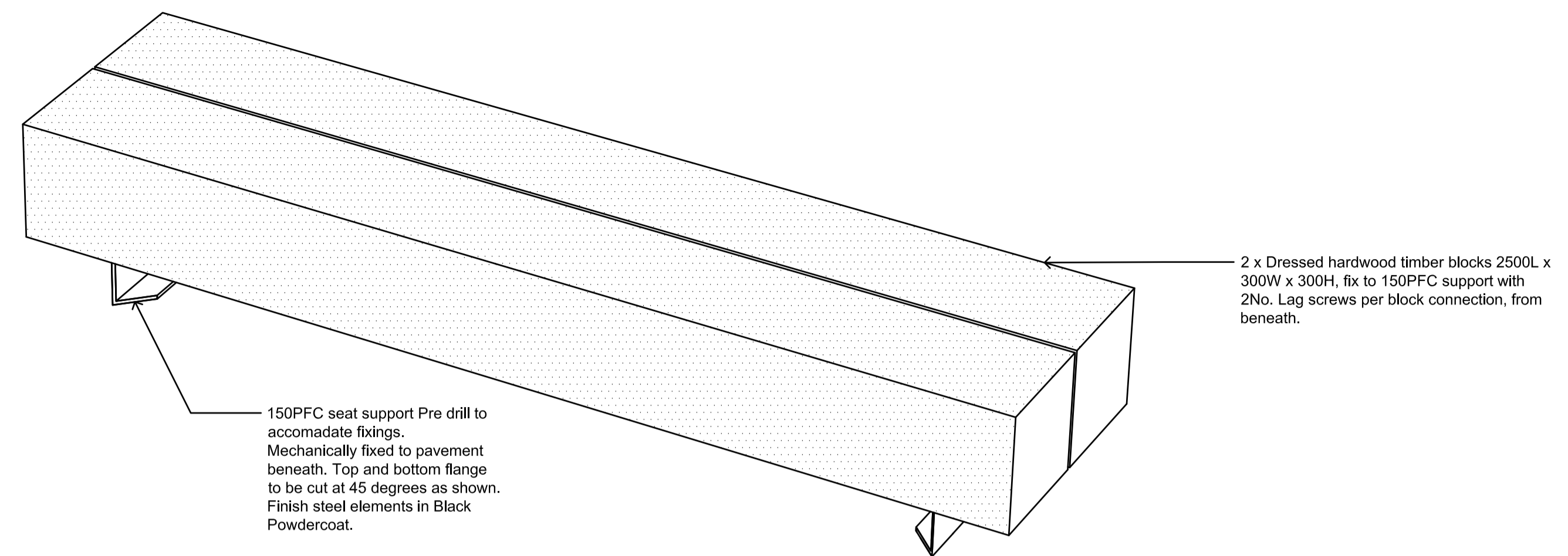
**02** BRICK DECK SEAT  
Plan Scale 1:25



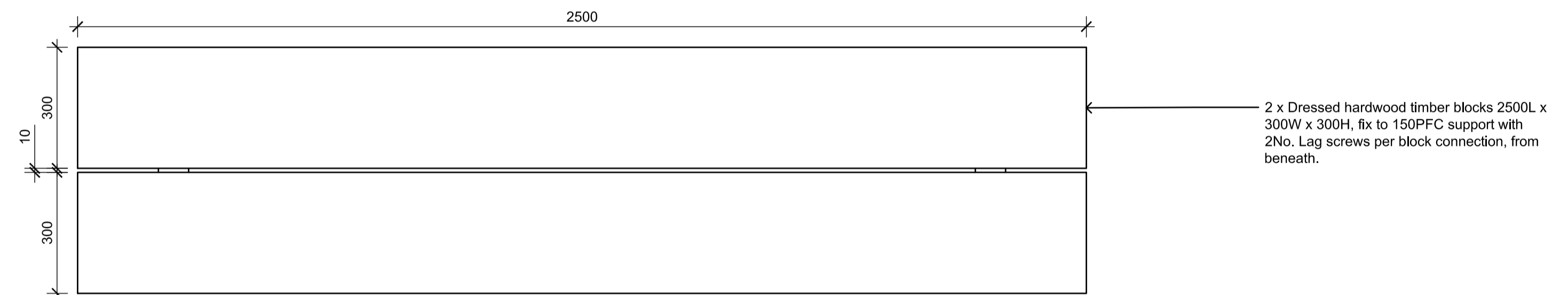
**03** BRICK DECK SEAT  
Plan Scale 1:25



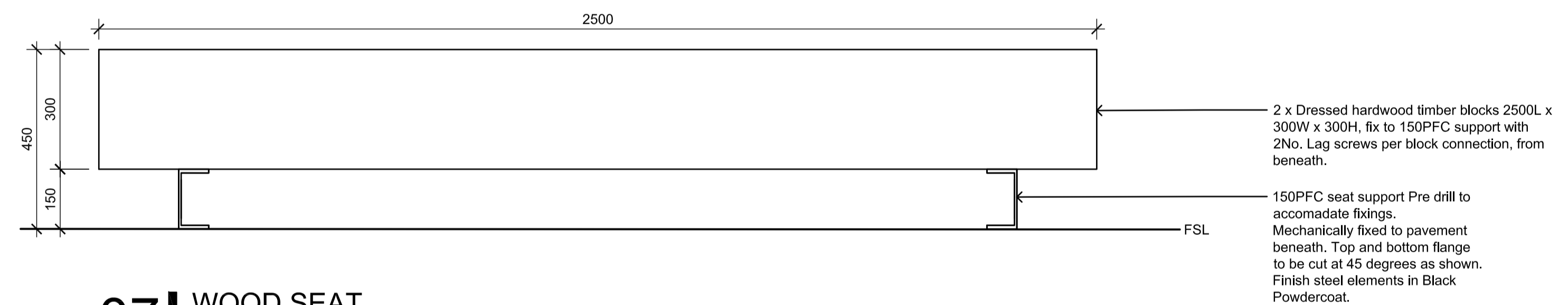
**04** BRICK DECK SEAT  
Section Scale 1:10



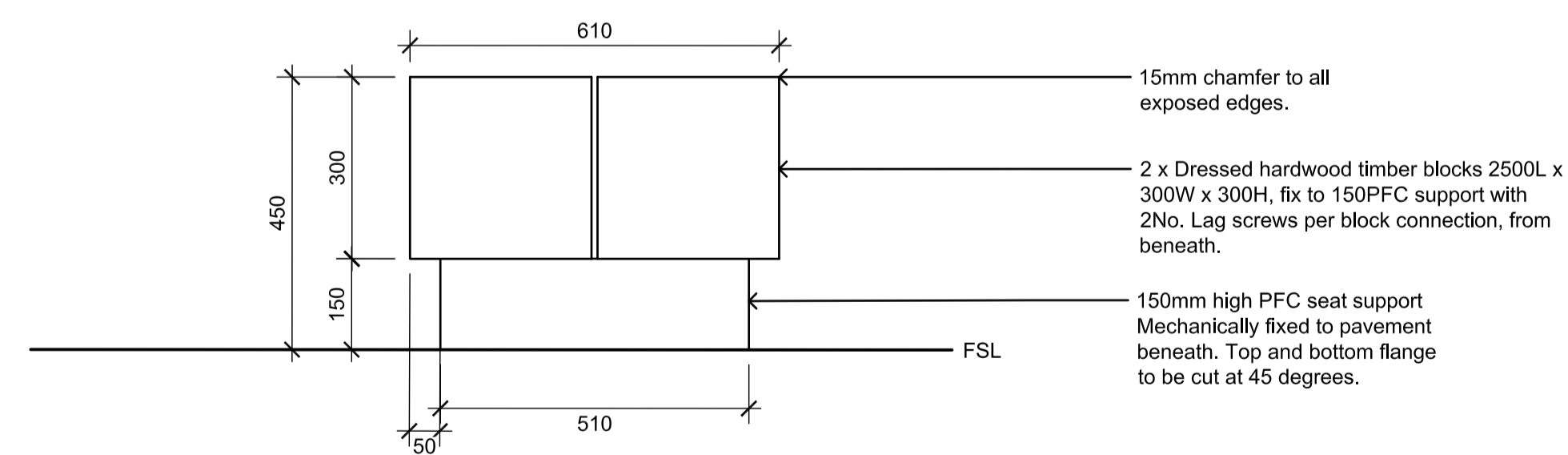
**05** WOOD SEAT  
Perspective Scale 1:10



**06** WOOD SEAT  
Plan Scale 1:10



**07** WOOD SEAT  
Section Scale 1:10



**08** WOOD SEAT  
Section Scale 1:10

H1

mala

NOTES

- H1 - Bench seat within VHR extent of registration highlighted

REV NO	DATE	DESCRIPTION
PT1	08.02.24	Preliminary Tender Issue - Draft For Coordination
T1	29.02.24	For Tender Issue
H1	04.04.24	Heritage Victoria Issue

PROJECT INFORMATION		SHEET TITLE	
VICTORIA STREET DEVELOPMENT 342-348 VICTORIA STREET BRUNSWICK, VIC 3029		<b>DETAILS - DECK SEAT</b>	
DRAWN BY	PLOT DATE	SCALE @ A1	NORTH
AY	29.02.2024	As shown	
ISSUE	PROJECT NO	SHEET NO.	REV NO
FOR TENDER	2302	<b>L603</b>	H1