

GENERAL NOTES

- ALL DRAWINGS TO BE PRINTED IN COLOUR.
- DETAIL SURVEY BACKGROUND AND EXISTING INFORMATION AS PROVIDED BY OTHERS.
- UNLESS NOTED OTHERWISE, PAVING LEVELS TO MATCH AND TIE IN TO EXISTING PAVING LEVELS AT ALL INTERFACES.
- UNLESS NOTED OTHERWISE ACCORDANCE:
 - ALL DIMENSIONS ARE IN MILLIMETRES
 - ALL REDUCED LEVELS ARE IN METRES
 - ALL LEVELS ARE TO AUSTRALIAN HEIGHT DATUM (AHD)
- DIMENSIONS SHALL NOT BE SCALED FROM DRAWINGS.
- TO DETERMINE THE FULL EXTENT OF WORK, THESE DRAWINGS SHALL BE READ IN CONJUNCTION WITH THE SPECIFICATION, CONSULTANTS DRAWINGS AND OTHER CONTRACT AND RELEVANT DOCUMENTS.

DEMOLITION NOTES

- ALL AREAS DEMOLISHED TO BE MADE GOOD TO ALLOW FOR INSTALLATION OF NEW MATERIALS AND TIE IN WORKS.
- THE ASSESSMENT OF THE EXISTING SITE ELEMENTS WITHIN THIS DOCUMENTATION PACKAGE IS CONSIDERED UNDER THE FOLLOWING CATEGORISATIONS :
- DEMOLITION** - I.E. ITEMS OR ASPECTS TO BE CAREFULLY AND PERMANENTLY REMOVED.
 - SALVAGE** - I.E. ITEMS TO BE CAREFULLY REMOVED, PROTECTED AND SECURELY STORED AHEAD OF REINSTATEMENT/RECONSTRUCTION.
 - CONSERVATION** - I.E. ORIGINAL (SIGNIFICANT) ITEMS TO BE PRESERVED, REPAIRED, RESTORED OR MISSING SIGNIFICANT ITEMS TO BE REINSTATED, NON-ORIGINAL ITEMS TO BE MAINTAINED AND RENEWED.
 - ADAPTATION AND REFURBISHMENT** - I.E. ALTERATION OR MODIFICATIONS TO EXISTING ELEMENTS, OR REPLACEMENT OF EXISTING INFRASTRUCTURE, TO ENABLE CONTINUED OR COMPATIBLE CONTEMPORARY USE, INCLUDING COMPLIANCE UPGRADES.
 - MAINTENANCE AND REPAIRS** - I.E. INSPECTION AND PROTECTIVE CARE OF EXISTING ELEMENTS TO PRESERVE THEIR INTEGRITY AND PROLONG THEIR SERVICE LIKE AHEAD OF POSSIBLE REPAIR WHICH MAY INVOLVE RESTORATION OR RECONSTRUCTION.
 - NEW WORKS** - I.E. INTRODUCTION OF NEW ELEMENTS TO IMPROVE AMENITY OR FUNCTIONS TO ENABLE COMPATIBLE CONTEMPORARY USE, INCLUDING COMPLIANCE UPGRADES.
 - REINSTATEMENT** - I.E. CURRENT OR EXISTING ITEMS OF VARIOUS FABRIC GRADING OF SIGNIFICANCE TO BE RECONSTRUCTED OR REINSTATED FOLLOWING THE COMPLETION OF AGREED TEMPORARY PERIOD.

SALVAGE AND RE-USE

- WHERE NOMINATED, ELEMENTS TO BE SALVAGED FOR RE-USE WITHIN THE PROJECT SHALL BE CAREFULLY REMOVED AND STORED SAFELY ON SITE UNTIL THE ELEMENT IS READY FOR RE-INSTALLATION / RE-USE.
- WHERE NOMINATED, ELEMENTS TO BE SALVAGED AND RETURNED TO PRINCIPAL OR ASSET OWNER SHALL BE CAREFULLY REMOVED AND STORED SAFELY ON SITE UNTIL THE ELEMENT CAN BE RETURNED TO ASSET OWNER. CONTRACTOR TO ALLOW FOR STAGING OF REMOVAL AND STORAGE IN CONJUNCTION WITH ASSET OWNERS.
- WHERE NOMINATED, ELEMENTS TO BE SALVAGED FOR RE-USE OUTSIDE THE PROJECT SITE, SHALL BE CAREFULLY REMOVED AND TRANSPORTED TO NOMINATED LOCATION. CONTRACTOR TO ALLOW FOR STAGING AND PROGRAMMING OF DELIVERY TO NOMINATED LOCATION.

TREE PROTECTION & REMOVAL

FOR WORKS WITHIN EXISTING TREES TPZ, ARBORIST SUPERVISION IS REQUIRED TO AS IDENTIFIED WITHIN THE AGS ARBORICULTURAL IMPACT ASSESSMENT (AIA)

TREE PROTECTION IN ACCORDANCE TO AS 4370.

- PROTECT ALL EXISTING TREES SCHEDULED FOR RETENTION FROM DAMAGE, INCLUDING TREES ON THE SITE AND ON ADJACENT PROPERTY.
- CARE FOR AND MAINTAIN ALL EXISTING TREES IN HEALTHY CONDITION DURING THE CONSTRUCTION PERIOD, INCLUDING ADEQUATE REGULAR WATERING.
- REFER TO PRINCIPAL ENGAGED ARBORIST (AGS) WATCH AND ACT METHODOLOGY FOR ALL TREE REMOVAL TO THE NGV GARDENS

TREE TRANSPLANTATION

- 1 NO. TREE IS NOMINATED FOR TRANSPLANTATION, AND REINSTALLATION WITHIN THE PROJECT SITE.
- TREE SPECIES - *Diospyros nana* - PERSIMMON
- PROPOSED TREE IS NOMINATED ON THE 1000 SERIES - EXISTING AND DEMOLITION PLANS.
- THE REVISED LOCATION IS NOMINATED ON THE 1100 SERIES - GENERAL ARRANGEMENT PLANS. THE EXISTING TREE TO BE TRANSPLANTED SHALL BE REMOVED AND MAINTAINED BY PRINCIPAL ENGAGED SPECIALIST CONSULTANT.
- THE SPECIALIST CONSULTANT SHALL BE ENGAGED BY THE PRINCIPAL.

LIGHTING

- LIGHTING IS PROPOSED AS PART OF THE PUBLIC GARDEN PROJECT WORKS.
- THE LIGHTING APPROACH PROPOSES A SERIES OF LAYERS:
 - PRIMARY PATHWAY POST - TOP LIGHTING
 - SECONDARY PATHWAY - BOLLARD LIGHTING
 - GARDEN LIGHTING WITHIN THE PLANTING
 - FEATURE LIGHTING FOR TREES, SCULPTURE AND ARTWORK
 - SAFETY LIGHTING WITHIN HANDRAILS
- THE LIGHTING DESIGN IS NOT SHOWN WITHIN THIS DOCUMENTATION PACKAGE

ABBREVIATIONS

CDS	CHECK ON SITE
CRIT	CRITICAL
DIA	DIAMETER
EQ	EQUAL
GPO	GENERAL PURPOSE (POWER) OUTLET
NOM	NOMINAL
NTS	NOT TO SCALE
YBC	TO BE CONFIRMED
TYP	TYPICAL
UNO	UNLESS NOTED OTHERWISE

LEGEND

GENERAL

01
A1010
SCALE

DRAWING TITLE

VIEW NUMBER
(with reference / no reference - documentation)

SECTION VIEW NUMBER
(with reference)

SECTION SHEET REFERENCE

CENTRELINE MARKER

SCALE BAR
0m 10mm 20mm 30mm 40mm

NORTH ECG

HOLD CLOUD

BREAK LINE

BUILDING CUT LINE

OVERHEAD STRUCTURE

BELOW GROUND STRUCTURE

SCO - SPECIFIC CONTROL OVERLAY

EXTENT OF PUBLIC REALM WORKS

PROPERTY TITLE BOUNDARY

HERITAGE REGISTRATION BOUNDARY - VICTORIAN ARTS CENTRE VHR 1303

HERITAGE REGISTRATION BOUNDARY - FORWARD SURGE VHR 2278

HERITAGE REGISTRATION BOUNDARY - NATIONAL GALLERY VICTORIA VHR 1468

HERITAGE REGISTRATION BOUNDARY - ST KILDA ROAD VHR 2338

BUILDING EGRESS POINT

BUILDING ENTRY POINT

RELATIVE LEVEL
RL +00.00

PROPOSED STAIRS

EXISTING STAIRS TO BE RETAINED AND PROTECTED

AXONOMETRIC VIEW CORNER

DEMOLITION, SALVAGE + RE-USE

DEMOLITION WITHIN SCOPE
REFER L1, 1001-1007 FOR INFORMATION

EXISTING ELEMENTS TO BE RETAINED/REINSTATED
REFER L1, 1001-1007 FOR INFORMATION

EXISTING ELEMENTS TO BE SALVAGED
REFER L1, 1001-1007 FOR INFORMATION

WORK AS PART OF A FUTURE APPLICATION(S)
REFER L1, 1001-1007 FOR INFORMATION

EXISTING TREES TO BE REMOVED
REFER L1, 1001-1007 FOR INFORMATION

EXISTING TREES TO BE RETAINED AND PROTECTED
REFER L1, 1001-1007 FOR INFORMATION

EXISTING TREES TO BE SALVAGED FOR RE-USE
REFER L1, 1001-1007 FOR INFORMATION

EXISTING TREES TO BE TRANSPLANTED
REFER L1, 1001-1007 FOR INFORMATION

EXISTING TREES TO BE RETAINED OUT OF PUBLIC REALM SCOPE
REFER L1, 1001-1007 FOR INFORMATION

TREE PROTECTION ZONE (TPZ)

EXISTING LEVEL
REFER SURVEY INFORMATION

TREE IDENTIFICATION NUMBER
REFER ARBORIST REPORT

EL +00.000

GENERAL ARRANGEMENT

PAVING

P1-01
PAVING - GRANITE PLANK
HARDCOURT GRANITE, EXPOSED FINISH
600mm x 1000mm L x 200mm W x 40mm D

P1-02
PAVING - COMPACTED GRAVEL
50mm - FINES

P1-03A
PAVING - COMPACTED GRAVEL IN GEODELL
HARDCOURT GRANITE
50mm - FINES

P1-03
PAVING - LOOSE GRAVEL
HARDCOURT GRANITE
5 - 7mm

P1-04
PAVING - COBBLESTONE
HARDCOURT GRANITE, EXPOSED FINISH / SITE SALVAGED BASALT WHERE POSSIBLE
140mm L x 140mm W x 40mm D

P1-05
PAVING - GRANITE STEPPER FLUSH
HARDCOURT GRANITE, EXPOSED FINISH
600mm x 1000mm L x 500mm - 700mm W x 100mm D

P1-06
PAVING - BLUESTONE PAVED SMALL
SITE SALVAGED STONE
450mm L x 245mm W x 40mm D

P1-07
PAVING - GRANITE STEPPER RAISED
HARDCOURT GRANITE, EXPOSED FINISH
500mm x 700mm L x 500mm - 700mm W x 100mm - 180mm D

P1-08
PAVING - SALVAGED COBBLESTONE
SITE SALVAGED PINK GRANITE AND BASALT
140mm L x 140mm W x 40mm D

P1-09
PAVING - BLUESTONE PAVED LARGE
COURT/PAVING, RE-INSTATED
950mm L x 495mm W x 40mm D

T1-01
TACTILE GROUND SURFACE INDICATOR - WARNING/OBSCURE BLUESTONE
PAVING WITH HARDCOURT GRANITE BUTTONS TO AGE/SLA

WALL / EDGE

W1-01
WALL - GRANITE CLAD CONCRETE
HARDCOURT GRANITE CLADDING, EXPOSED FINISH
500mm MAX 1000mm H x 100mm W x 20mm CLADDING TO EXPOSED FACES
NOTE: MINIMUM ALLOWANCE FOR DARK STEEL PLATE WITH 4000mm TOP PROFILE TO EXPOSED ENDS OF WALL TYPE

W1-02
WALL - SALVAGED BLUESTONE CLAD CONCRETE
BLUESTONE CLADDING, SALVAGED, CHAMFERED TOP WITH BLUESTONE CHIPPING PRICE
BLUESTONE TO BE SALVAGED AND REUSED FROM SITE WORKS
MAX 2000mm H x 100mm W x 20mm CLADDING TO EXPOSED FACES

W1-03
WALL - CONCRETE WITH METAL CLADDING
RECESSIVE DARK FINISH
1000mm SHEET CLADDING WITH 400mm SUPPORT ANGLE

ED-01
EDGE - STAINLESS STEEL - FLUSH

ED-02
EDGE - STAINLESS STEEL - RABGED

ED-03
EDGE - STAINLESS STEEL - STAKE

RAILINGS AND WESTERN EDGE

R1-01
HANDRAIL - SINGLE STEEL - TYPE 1
GRADE 304 L, 100mm FINISH WITH POLISHED FEATURE ELEMENTS
40mm CHS HANDRAIL

R1-02
HANDRAIL - SINGLE STEEL - TYPE 2
GRADE 304 L, 100mm FINISH WITH POLISHED FEATURE ELEMENTS
2 x 42.3mm CHS POSTS, 40mm CHS HANDRAIL

R1-03
RAIL/STAIRCASE - STEEL
GRADE 304 L, 100mm FINISH WITH POLISHED FEATURE ELEMENTS
2 x 42.3mm CHS POSTS, 21.3mm DIA CHS TOP RAIL x 1000mm H

WE-01
WESTERN EDGE - METAL SCREENING - TRANSPARENT
DARK RECESSIVE STEEL

WE-02
WESTERN EDGE - METAL SCREENING - SOLID
DARK RECESSIVE STEEL

SEATING

F1-01A
CLEARING SEATING - FLEXIBLE

F1-01B
CLEARING SEATING - FLEXIBLE - WITH BACKREST & ARMREST

F1-02A
SEATING - TIMBER ON GRANITE CLAD WALL

F1-02B
SEATING - TIMBER ON GRANITE CLAD WALL - WITH BACKREST & ARMREST

F1-03A
SEATING - FLOATING TIMBER ON STEEL FRAME

F1-03B
SEATING - FLOATING TIMBER ON STEEL FRAME - WITH BACKREST & ARMREST

F1-04A
SEATING - GRANITE CLAD CONCRETE

F1-04B
SEATING - GRANITE CLAD CONCRETE - WITH BACKREST & ARMREST

F1-05
ROCK SEATING - WITH BACKREST & ARMREST

FIXTURES & FITTINGS

F1-01 A
CHIMNEY FOUNTAIN
CHIMNEY/DAWG

F1-01 B
WATER FOUNTAIN WITH RE-FILL STATION AND DOGS BOWL

F1-02
FIRE HYDRANT CABINET

F1-04
MECHANICAL VENT COVER

F1-07
BASK HOOPS

F1-08
IRRIGATION CONTROLLER

FOG PIDS

FOG CONTROL ACCESS/PT

ARTWORK & SCULPTURES

SC-01
LARGE SCULPTURE - NEW

SC-02
LARGE SCULPTURE - NEW

SC-03
HAPPY ENDING - MELL

SC-04
PELICAN - BRETT WHITLEY

SC-05
LUA BOURN DUNGA - AUNTIE KIM WADON

SC-06
BALZAC - ERWIN WURM

SC-07
LARGE SCULPTURE - NEW

SC-08
BALZAC - ROOM

SC-09
FERNBROOK - JULIAN OPE

SC-10
DYNAMIC SEATED WOMAN - HENRY MOORE

SC-11
FORWARD SURGE - RAGE KING

UTILITIES AND SERVICES (BY OTHERS)

HP1
HELP POINTS

GRADED TRENCH/DRAIN

WAYFINDING (BY OTHERS)

WAYFINDING PLACED SIGN

TREES

TR-01
LARGE NATIVE TREE

TR-02
SMALL NATIVE TREE

TR-03
SMALL EXOTIC TREE

EXISTING TREE TO BE PROTECTED AND RETAINED

TRANSPLANTED TREE

SUB-STRUCTURE SHrub

SOFT LANDSCAPE
GARDEN TYPOLOGY PLANT MIXES

PL-01 A
DYNAMIC GRASSLAND
LARGE SCALE MIX

PL-01 B
DYNAMIC GRASSLAND
MEDIUM SCALE MIX

PL-01 C
DYNAMIC GRASSLAND
SMALL SCALE MIX

PL-01 D
DYNAMIC GRASSLAND
SHADE MIX

PL-02 A
ROCKS AND RANGES
LARGE SCALE MIX

PL-02 B
ROCKS AND RANGES
MEDIUM SCALE MIX

PL-02 C
ROCKS AND RANGES
SMALL SCALE MIX

PL-03 A
FLOWERING BLOSSOMS
LARGE SCALE MIX

PL-03 B
FLOWERING BLOSSOMS
MEDIUM SCALE MIX

PL-03 C
FLOWERING BLOSSOMS
SMALL SCALE MIX

PL-04 A
VALLEY FLOOR
LARGE SCALE MIX

PL-04 B
VALLEY FLOOR
MEDIUM SCALE MIX

PL-04 C
VALLEY FLOOR
SMALL SCALE MIX

PL-05 A
FLOWERING BLOSSOMS
LARGE SCALE MIX

PL-05 B
FLOWERING BLOSSOMS
MEDIUM SCALE MIX

PL-05 C
FLOWERING BLOSSOMS
SMALL SCALE MIX

PL-05 D
FLOWERING BLOSSOMS
SHADE MIX

SURFACE AREA

WATER

LEAD CONSULTANT

Hassell

Hassell LTD ABN 24 007 711 435
61 Little Collins Street
Melbourne VIC 3000 Australia
T +61 3 8102 3000
melbourne@hassellstudio.com
Architect Directors VIC:
Mark Loughran 19002
Brandon Kelly 20550
Liz Westgarth 00113

CONSULTANT TEAM

SO-IL

wsp

Superloom

PHILIP CHUN

VIPAC

NORTHROP

WATERPROOFING

GREENWATER

PURCELL

MGAC

WILLIAM POWERS

S & M Connellan Consultants

JAMES HITCHMOUGH

Nigel Dunnett

CLIENT

DEVELOPMENT VICTORIA

REFERENCE

Diagram showing site layout and reference points.

NORTH

NOTES

- Do not scale drawing. Written dimensions govern
 - All dimensions are in millimeters unless noted otherwise
 - All dimensions shall be verified on site before proceeding with the work. Hassell shall be notified in writing of any discrepancies.
 - This drawing must be read in conjunction with all relevant contracts, specifications and drawings
- This drawing is an uncontrolled copy. Unless noted otherwise
- © Copyright of this drawing is vested in Hassell Ltd.

REV DESCRIPTION

A	FOR APPROVAL
B	FOR COORDINATION
C	DRAFT DETAIL DESIGN
D	DETAIL DESIGN
E	FOR HERITAGE APPROVAL
F	FOR HERITAGE APPROVAL
G	DETAIL DESIGN UPDATE
H	FOR HERITAGE APPROVAL

DATE

01/06/2023
09/02/2024
30/04/2024
06/06/2024
15/07/2024
13/09/2024
17/04/2025
30/04/2025

CLIENT

DEVELOPMENT VICTORIA

STATUS

DETAIL DESIGN

DRAWING TITLE

LEGEND & GENERAL NOTES

REVIEWED

SQ

APPROVED

BD

DRAWING NO.

L_0002

SCALE @ A0

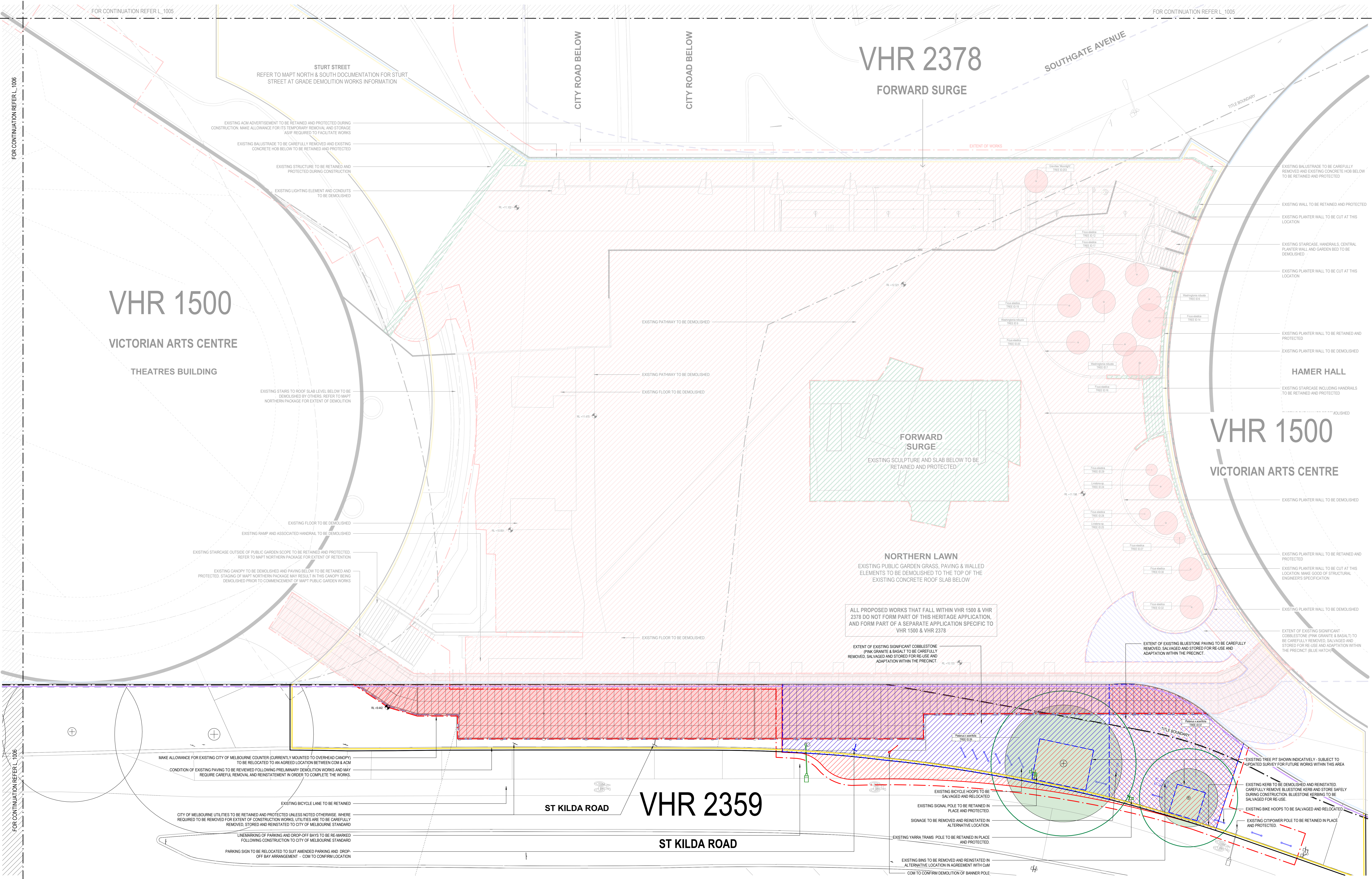
N/A

PROJECT NO.

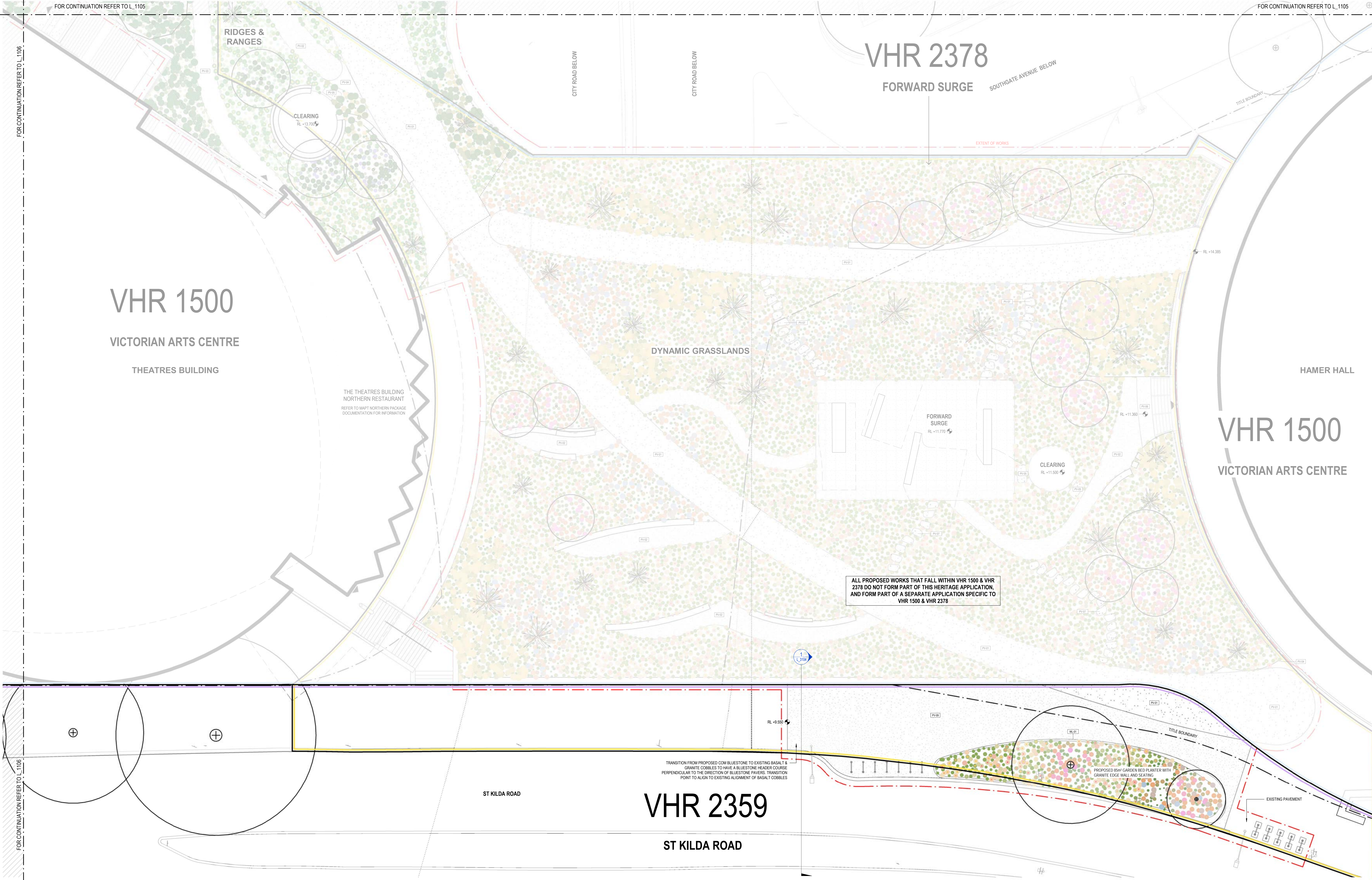
013922

REV NO.

H



<div><div></div><div>LEAD CONSULTANT</div><div><div><div>Hassell</div><div>LTD ABN 24 007 711 435 61 Little Collins Street Melbourne VIC 3000 Australia T +61 3 8102 3000 melbourne@hassellstudio.com Architect Directors VIC: Mark Loughlin 15002 Brenden Kelly 20504 Liz Westgarth 00113</div></div></div></div>	<div><div>CONSULTANT TEAM</div><div><div>SO-IL</div><div>WSP</div><div>Superloom</div><div>PHILIP CHUN</div><div>VIPAC</div><div>NORTHROP</div><div>WATERPROOFING</div><div>GREENHAWTHORNS</div><div>PURCELL</div><div>JUNGER HUGHES</div><div>G & M Connellan Consultants</div><div>JAMES HITCHMOUGH</div><div>Nigel Dunnett</div></div></div>	<div><div>CLIENT</div><div><div>DEVELOPMENT VICTORIA</div></div></div>	<div><div>REFERENCE</div><div><div></div></div></div> <div><div>NORTH</div><div><div></div></div></div> <div><div>1:100</div><div>0m 1m 2m 3m 4m</div></div>	<div><div>NOTES</div><div><div>1. Do not scale drawing. Written dimensions govern</div><div>2. All dimensions are in millimeters unless noted otherwise</div><div>3. All dimensions shall be verified on site before proceeding with the work. Hassell shall be notified in writing of any discrepancies.</div><div>4. This drawing must be read in conjunction with all relevant contracts, specifications and drawings</div><div>This drawing is an uncontrolled copy. Unless noted otherwise</div><div>© Copyright of this drawing is vested in Hassell Ltd.</div></div></div>	<div><div>REV DESCRIPTION</div><div><div>A FOR COORDINATION</div><div>B FOR COORDINATION</div><div>C DRAFT DETAIL DESIGN</div><div>D DETAIL DESIGN</div><div>E FOR HERITAGE APPROVAL</div><div>F FOR HERITAGE APPROVAL</div><div>G DETAIL DESIGN UPDATE</div><div>H FOR HERITAGE APPROVAL</div></div></div>	<div><div>DATE</div><div><div>09/02/2024</div><div>01/03/2024</div><div>30/04/2024</div><div>06/06/2024</div><div>15/07/2024</div><div>13/09/2024</div><div>17/04/2025</div><div>02/05/2025</div></div></div> <div><div>CLIENT</div><div><div>DEVELOPMENT VICTORIA</div></div></div> <div><div>PROJECT</div><div><div>LAKK BOORDNAP PUBLIC GARDEN MELBOURNE ARTS PRECINCT TRANSFORMATION</div></div></div>	<div><div>STATUS</div><div><div>DETAIL DESIGN</div></div></div> <div><div>DRAWING TITLE</div><div><div>ZONE 07 - EXISTING, DEMOLITION, SALVAGED AND RE-USE PLAN</div></div></div>	<div><div>REVIEWED</div><div><div>SQ</div></div></div> <div><div>APPROVED</div><div><div>BD</div></div></div> <div><div>DRAWING NO.</div><div><div>L_1007</div></div></div> <div><div>SCALE @ A0</div><div><div>1 : 100</div></div></div> <div><div>PROJECT NO.</div><div><div>013922</div></div></div> <div><div>REV NO.</div><div><div>H</div></div></div>
--	---	--	--	---	---	--	---	--



LEAD CONSULTANT

Hassell

Hassell LTD ABN 24 007 711 435
61 Little Collins Street,
Melbourne Vic 3000 Australia
T +61 3 8102 3000
melbourne@hassellstudio.com
Architect Directors VIC:
Mark Loughran 15002
Brendon Kelly 20504
Liz Westgarth 00113

CONSULTANT TEAM

SO-IL

NORTHROP

wsp

WATERPROOFING

Super Bloom

GREENWATER

PHILIP CHUN

PURCELL

VIPAC

MGAC

G & M Connellan Consultants

JAMES HITCHMOUGH

Nigel Dunnett

CLIENT

DEVELOPMENT VICTORIA

REFERENCE

NOTES

1. Do not scale drawing. Written dimensions govern
2. All dimensions are in millimeters unless noted otherwise
3. All dimensions shall be verified on site before proceeding with the work. Hassell shall be notified in writing of any discrepancies.
4. This drawing must be read in conjunction with all relevant contracts, specifications and drawings.

This drawing is an uncontrolled copy. Unless noted otherwise
© Copyright of this drawing is vested in Hassell Ltd.

REV **DESCRIPTION**

A	FOR COORDINATION
B	DRAFT DETAIL DESIGN
C	DETAIL DESIGN
D	FOR HERITAGE APPROVAL
E	FOR HERITAGE APPROVAL
F	DO UPDATE - DESIGN FREEZE
G	DETAIL DESIGN UPDATE
H	FOR HERITAGE APPROVAL

DATE

01/03/2024
30/04/2024
06/06/2024
15/07/2024
13/08/2024
31/04/2025
17/04/2025
30/04/2025

CLIENT

DEVELOPMENT VICTORIA

PROJECT

LAAK BOORNDAP PUBLIC GARDEN
MELBOURNE ARTS PRECINCT
TRANSFORMATION

STATUS

DETAIL DESIGN

DRAWING TITLE

ZONE 07 - GENERAL ARRANGEMENT
PLAN

REVIEWED

SQ

APPROVED

BD

DRAWING NO.

L_1107

SCALE @ A0

1 : 100

PROJECT NO.

013922

REV NO.

H