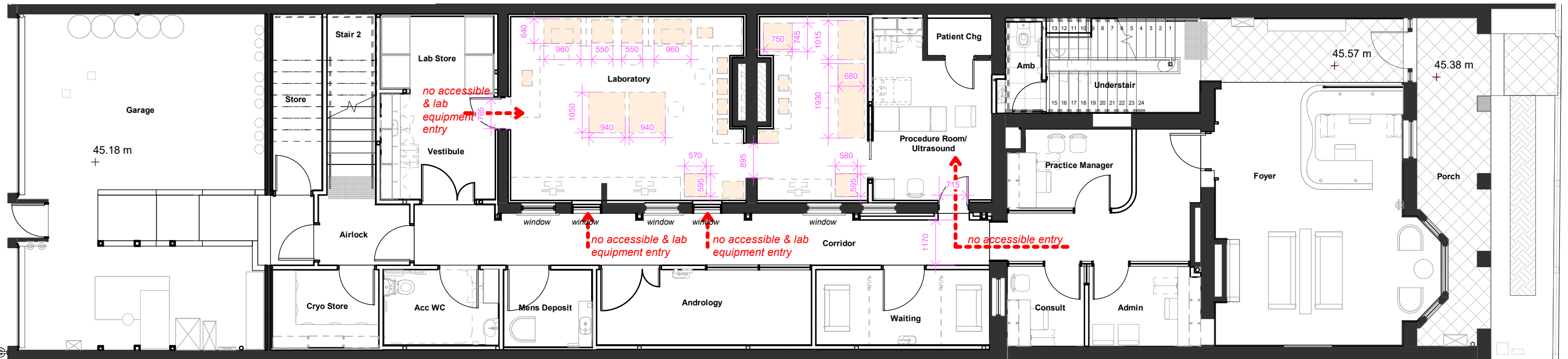
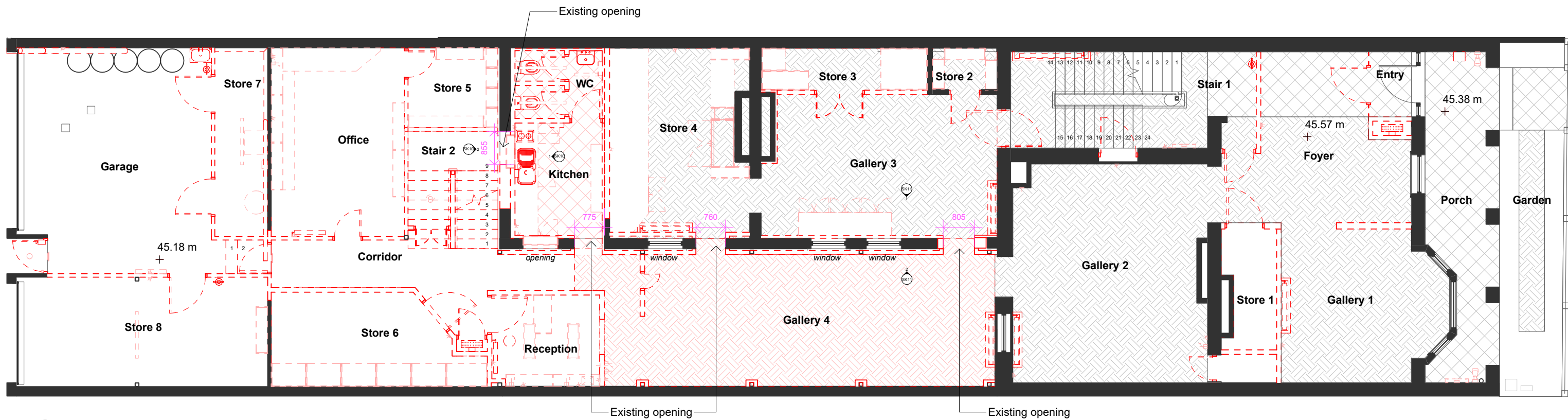


1 EX/ DEMO GROUND FLOOR PLAN  
1 : 100

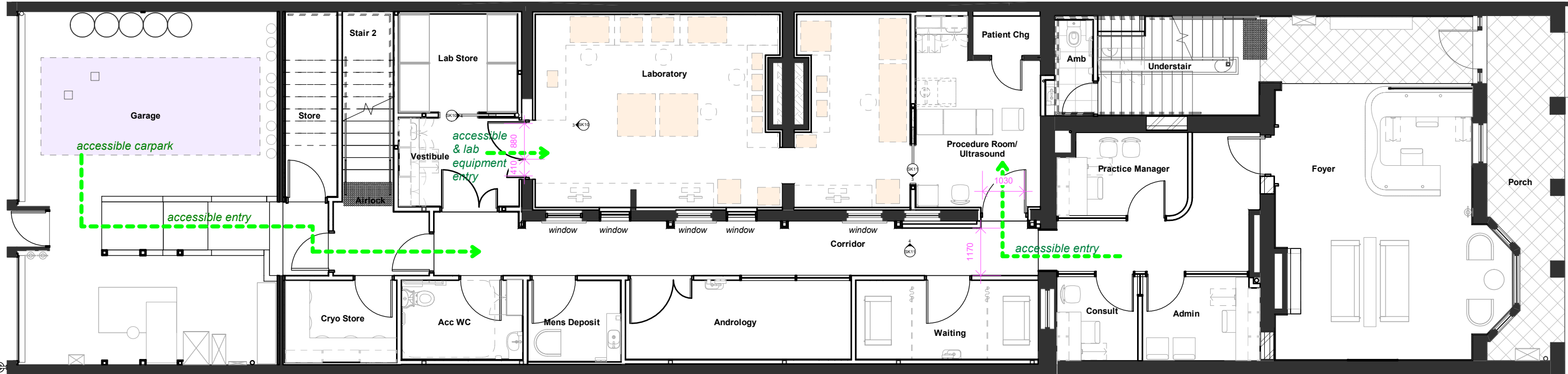


2 IMPLICATIONS IF PERMIT REJECTED  
1 : 100

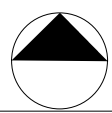


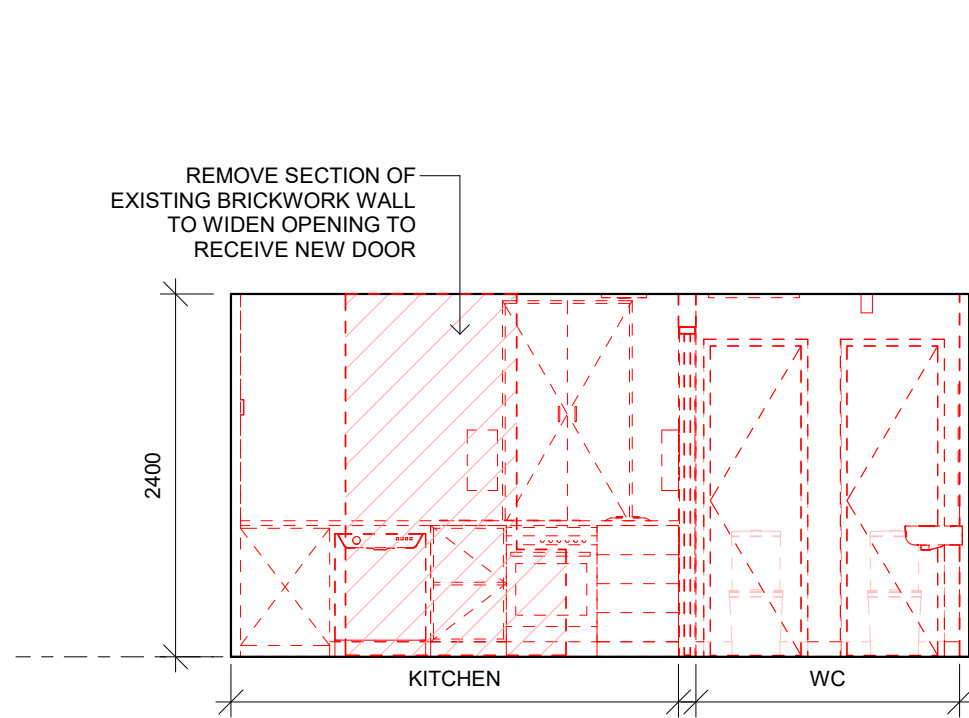


1 EX/ DEMO GROUND FLOOR PLAN  
1 : 100

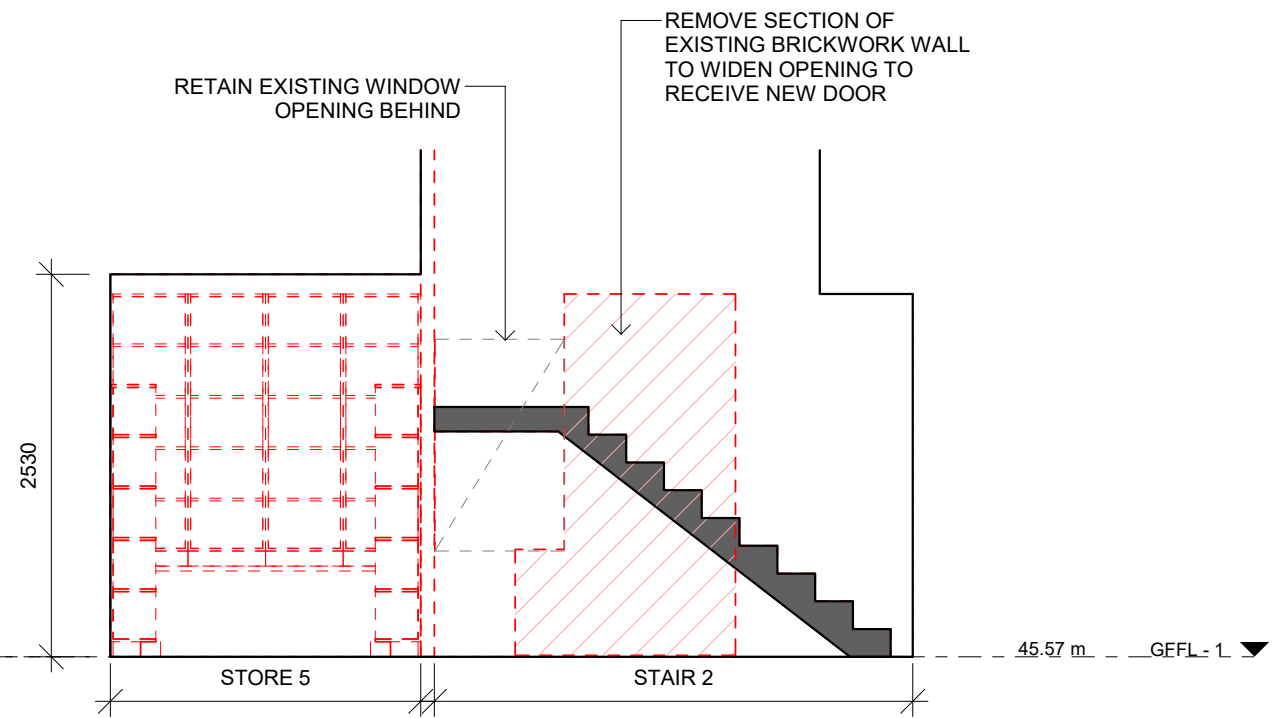


2 PROPOSED GROUND FLOOR PLAN  
1 : 100

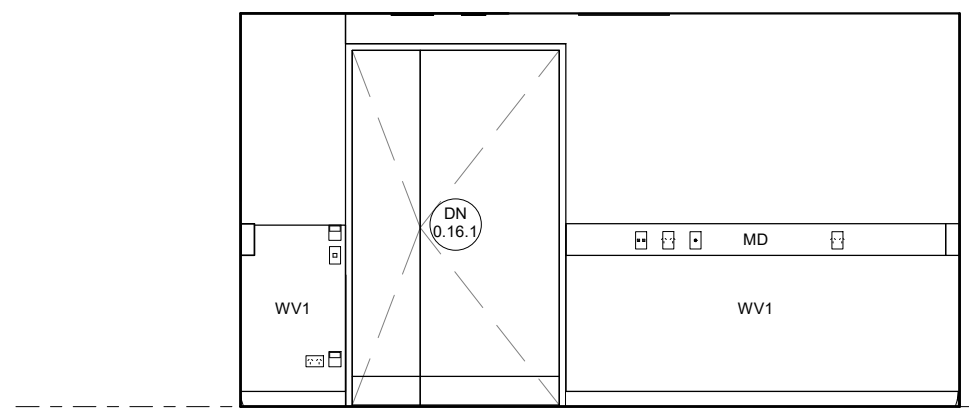




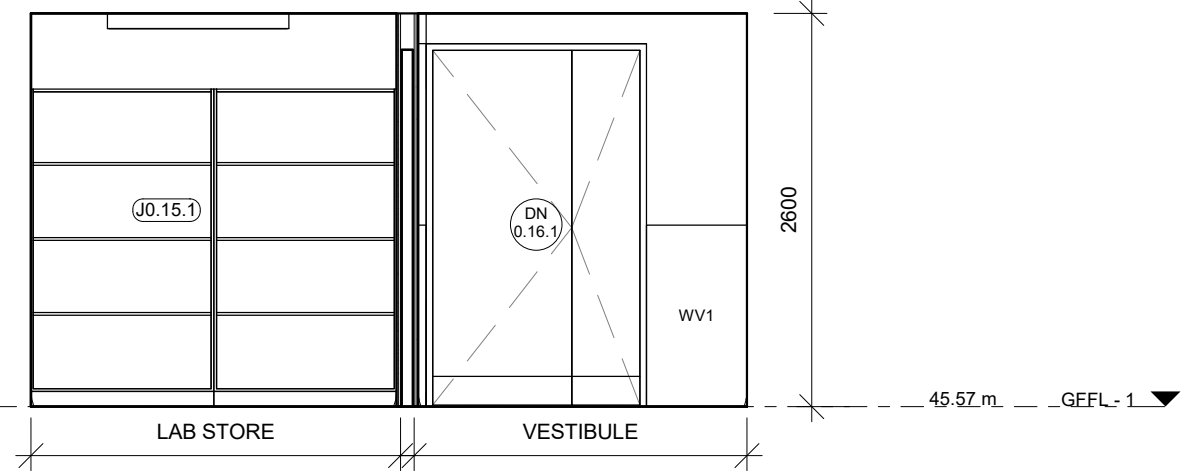
**1** EX/DEMO KITCHEN  
1 : 50



**2** EX/DEMO KITCHEN  
1 : 50



**3** PROPOSED VESTIBULE  
1 : 50



**4** PROPOSED VESTIBULE/ LAB STR  
1 : 50

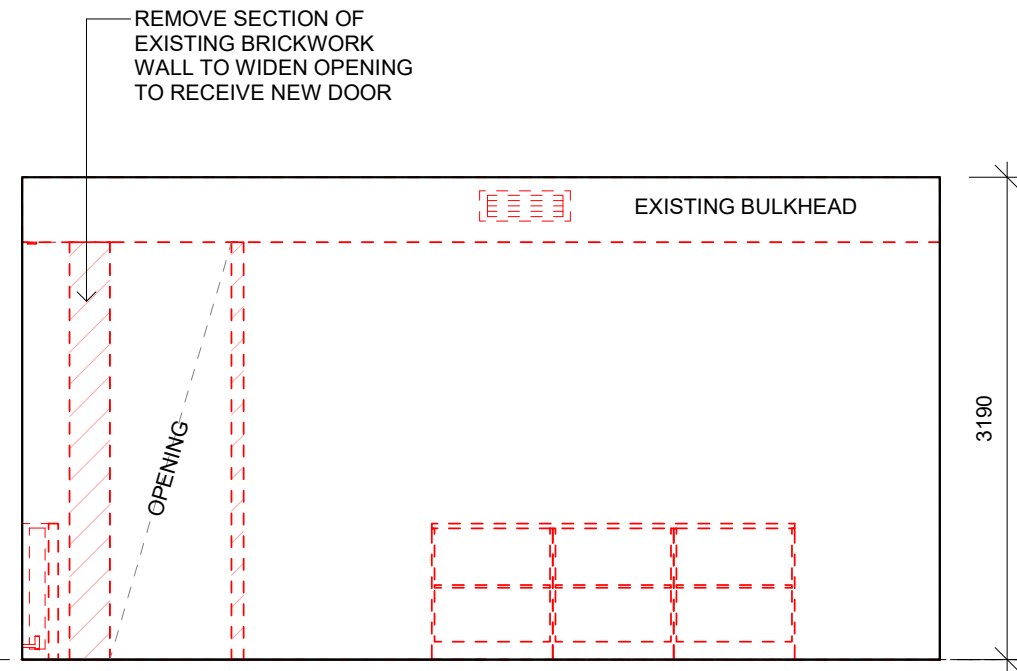
LEGEND	
MD	SURFACE MOUNTED MEDICAL SERVICES WALL DUCT
WV1	WALL VINYL TYPE 1

**content studio**

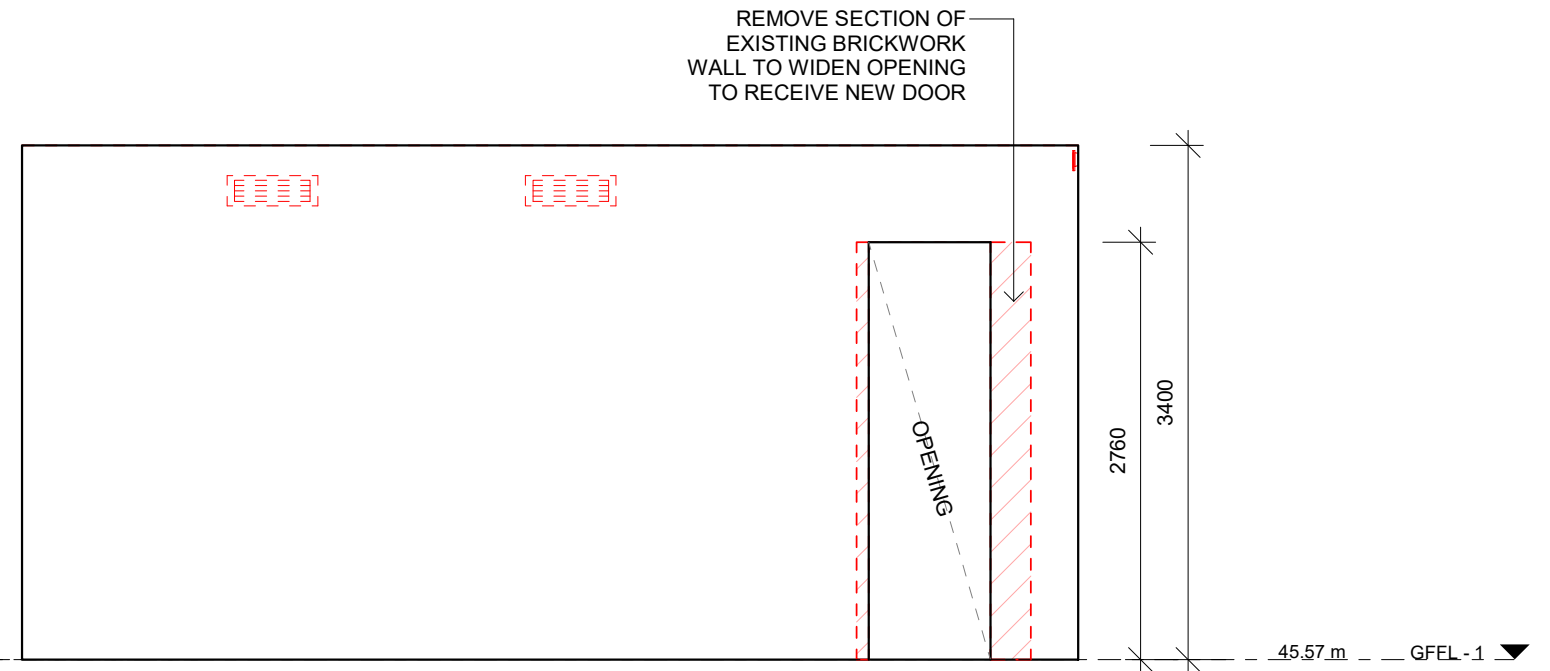
52 Charles Street, Fitzroy, Victoria, 3065  
ph: 03 9417 6763  
e: info@contentstudio.com.au  
w: www.contentstudio.com.au



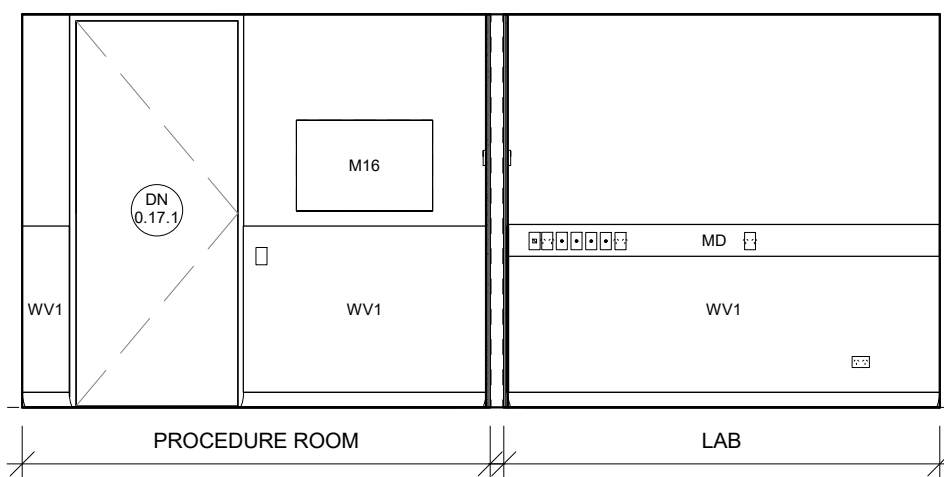
Elevations



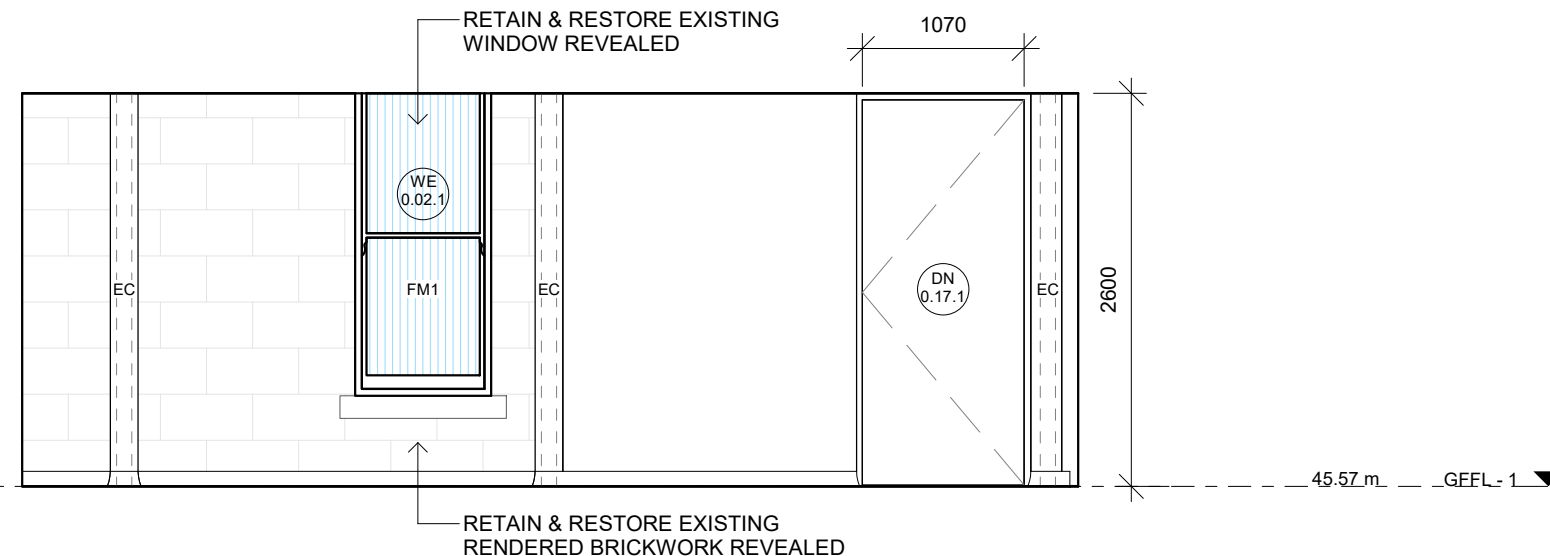
1 EX/DEMO GALLERY 3  
1 : 50



2 EX/DEMO GALLERY 3  
1 : 50



3 PROPOSED LAB/ PR ROOM  
1 : 50

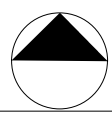


4 PROPOSED CORRIDOR  
1 : 50

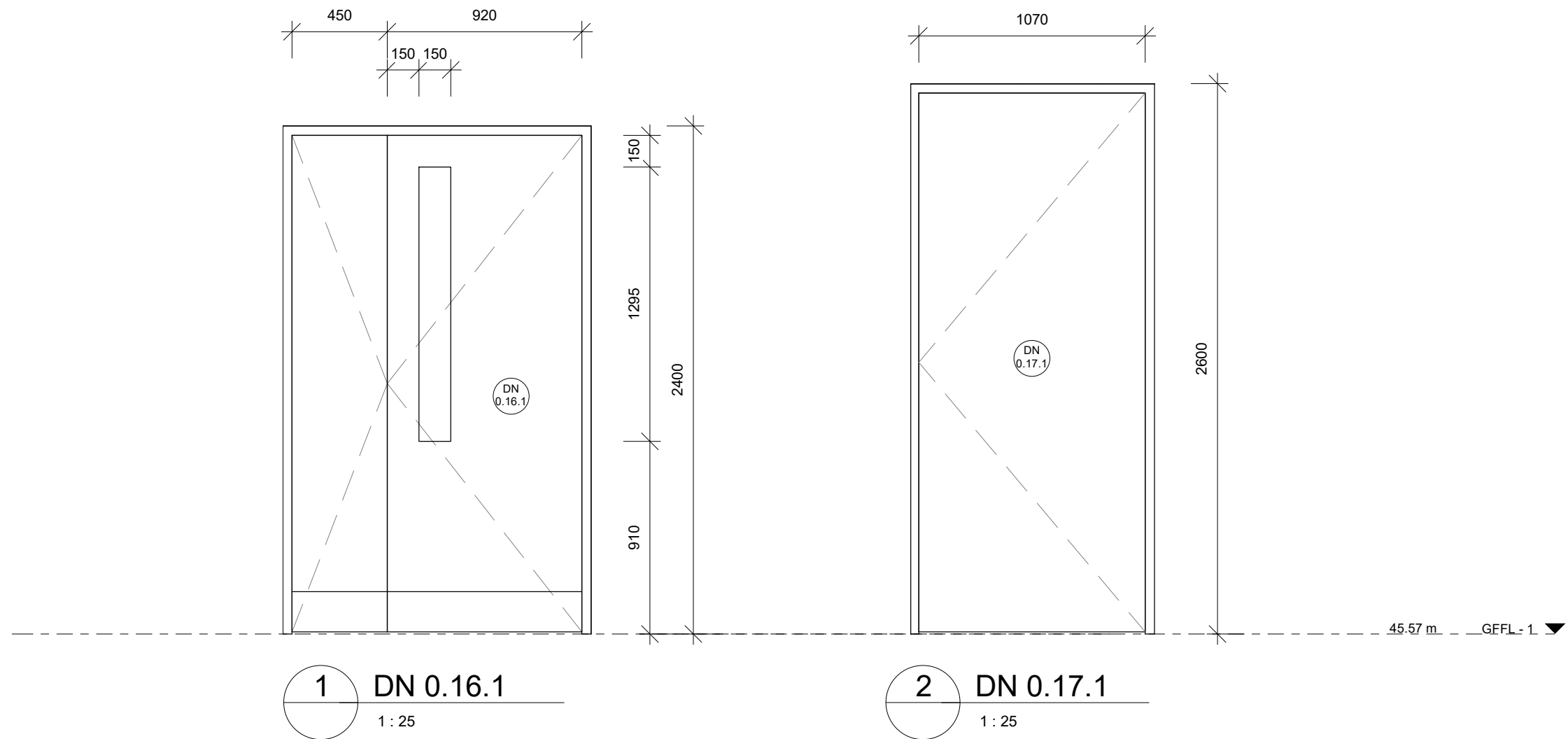
LEGEND	
EC	EXISTING COLUMN
FM1	GLAZING FILM TYPE 1
M16	WALL MOUNTED MEDICAL MONITOR
MD	SURFACE MOUNTED MEDICAL SERVICES WALL DUCT
WV1	WALL VINYL TYPE 1

**content studio**

52 Charles Street, Fitzroy, Victoria, 3065  
ph: 03 9417 6763  
e: info@contentstudio.com.au  
w: www.contentstudio.com.au



Elevations



Code	Room No	Room	Type	Spec/Size	Works required	Finish	Furnishings
DN 0.16.1	0.16	Laboratory	New Aluminium Framed Solid Core Hinged Unequal Double Door with View Panel	<b>Size:</b> Refer Door & Window Schedule <b>Leaf:</b> 38mm solid core flush panel <b>Frame:</b> Capral 400 Series <b>Glazing:</b> 6.38mm ComfortPlus clear laminated <b>Kickplate:</b> 200mm stainless steel to both leaves		<b>Frame colour:</b> Dulux Duralloy Powdercoating - Shoji White Satin  1 coat Dulux enviro2 Acrylic Sealer Undercoat + 2 coats Dulux Professional Steriguard Water Based Enamel Gloss <b>Leaf colour:</b> TBC	<b>Perimeter Seal:</b> Kilargo Antimicrobial Door Seal (IS7010AMsi) <b>Bottom Seal:</b> Kilargo Antimicrobial Seal (IS8010AMsi) <b>Astragal Seal:</b> Kilargo Antimicrobial Seal (IS7060AMsi)
DN 0.17.1	0.17	Procedure Room 1 / Ultrasound	New Aluminium Framed Solid Core Hinged Door	<b>Size:</b> Refer Door & Window Schedule <b>Leaf:</b> 38mm solid core flush panel <b>Frame:</b> Capral 400 Series		<b>Frame colour:</b> Dulux Duralloy Powdercoating - Shoji White Satin  1 coat Dulux enviro2 Acrylic Sealer Undercoat + 2 coats Dulux Professional Steriguard Water Based Enamel Gloss <b>Leaf colour:</b> TBC	<b>Perimeter Seal:</b> Kilargo Antimicrobial Door Seal (IS7010AMsi) <b>Bottom Seal:</b> Kilargo Antimicrobial Seal (IS8010AMsi)