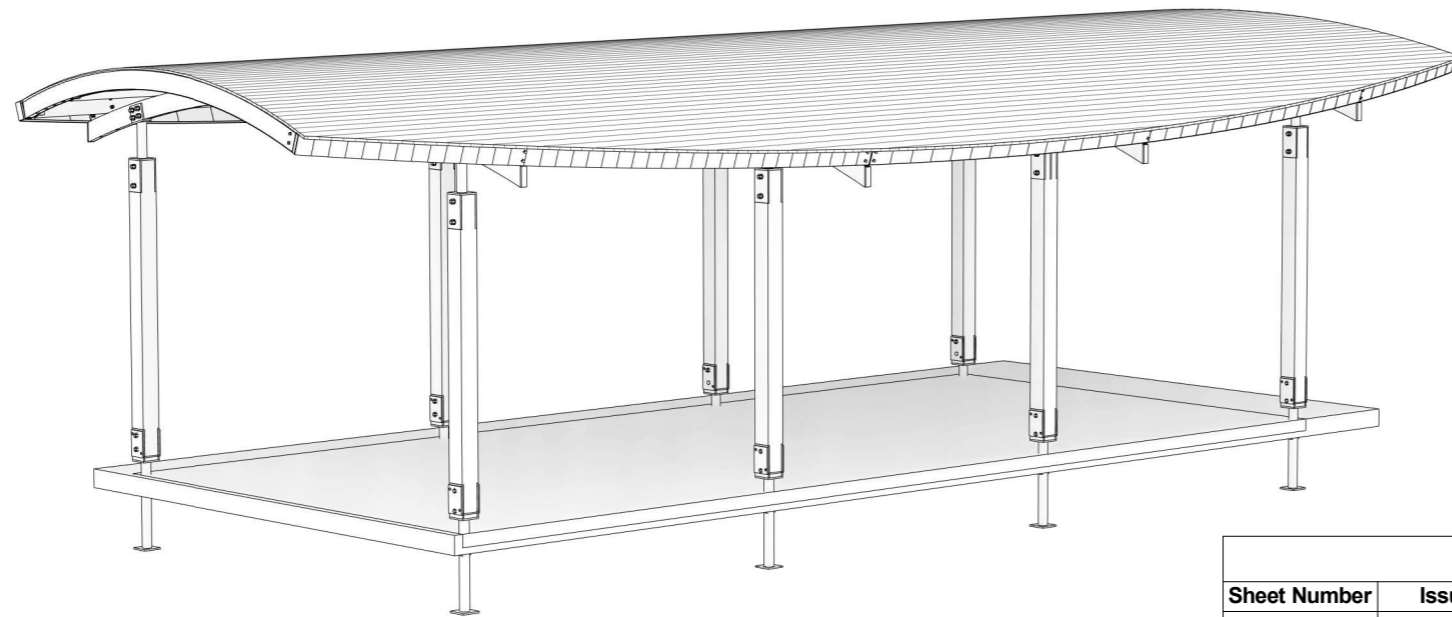


ARCHITECTURAL DRAWINGS



DRAWING LIST						
Sheet Number	Issue	Sheet Name	Sheet Issue Date	Drawn By	Current Revision	Current Revision Date
A103	WD	GENERAL NOTES	17.11.2022	CML	B	17.11.22
A303	WD	PROPOSED FLOOR PLAN	23.02.2023	CR	C	23.02.23
A304	WD	PROPOSED ELEVATIONS	23.02.2023	CR	C	23.02.23
A401	WD	PROPOSED SECTION	17.11.2022	CML	B	17.11.22
A601	WD	3D VIEWS	17.11.2022	CML	B	17.11.22

**PLANS TO BE SITING PRIOR TO ISSUING FINAL
CONSTRUCTION DRAWINGS
DUPLICATES FROM ORIGINAL PLAN SHALL NOT
BE USED ON MULTIPLE SITES WITHOUT DMC
APPROVAL**

DMC
Drafting & Design

A.B.N: 17 097 849 769
DP-AD 19324
PHONE: (03) 5443 5328
MOBILE: 0408 171 290
EMAIL: dmcdrafting@bigpond.com

PROJECT: PROPOSED STANDARD SHELTER

ADDRESS: **** SITING REQUIRED PRIOR TO
ISSUE OF FINAL CONSTRUCTION
DRAWINGS***

CLIENT: BRAD CREME - DJA DJA WARRUNG

REF: DMC - DDW006

DATE: 23.02.2023

NCC COMMERCIAL GENERAL NOTES

Classification of Buildings and Structures

- Building classification shall be in accordance with the NCC 2019 – A6.0.
- For building with multiple or part with more than one classification, classes shall be determined in accordance with the NCC 2019 – A6.11.

Fire Hazard Properties

- Specification C1.10 sets out the procedures for determining the fire hazard properties of assemblies tested to AS/NZS 1530.3.
- Fire hazard properties must comply with the NCC 2019 – C1.10.

Fire Resistance

- Type of fire-resisting construction of a building to be specified in accordance with NCC 2019 – C1.1, relevant to the number of storeys calculated as per provisions in the NCC 2019 – C1.2.
- Buildings with multiple or mixed fire-resisting constructions must be in accordance with the NCC 2019 – C1.3 & C1.4.
- Lightweight construction must comply with the NCC 2019 – C1.8.
- Materials specified in accordance with the NCC 2019 – C1.9, may be used where non-combustible materials are required.
- Fire-protected timber must be in accordance with the NCC 2019 – C1.13.

Compartmentation and Separation

- General floor area and volume limitation for Class 5, 6, 7, 8 or 9 building must not exceed the specified in accordance with the NCC 2019 – C2.2.
- Large isolated building shall be in accordance with the NCC 2019 – C2.3.
- Open spaces required by C2.3 and vehicular access required by Part C2.0 shall comply with the NCC 2019 – C2.4.
- Construction of fire walls to separate building and fire compartments shall comply with the NCC 2019 – C2.7.
- Separation of classifications in the same storey and different storeys shall be in accordance with the NCC – C2.8 & C2.9.
- Separation of lift shafts, stairways and lift in on shaft and equipment must comply with the NCC 2019 – C2.10, C2.11 & C2.12.
- Electricity supply systems must be in accordance with the NCC 2019 – C2.13.
- Public corridors with a length greater than 40m in a Class 2 or 3 building must be in accordance with the NCC 2019 – C2.14.

Protection of Openings

- Openings in external walls that have a required FRL must be protected in accordance with the NCC 2019 – C3.2.
- Separation of external walls and associated openings in different fire compartments separated by a fire wall must comply with the NCC 2019 – C3.3.
- Doorways, windows and other opening required to have protection, must be protected in accordance with the NCC 2019 – C3.4.
- Doorways in fire walls, sliding fire doors must be in accordance with the NCC 2019 – C3.5 & C3.6.
- Protection of doorways in horizontal exits and openings in fire-isolated exits must comply with the NCC 2019 – C3.7 & C3.8.
- Service penetrations in fire-isolated exits and openings in fire-isolated lift shafts must be in accordance with the NCC 2019 – C3.9 & C3.10.
- Openings in floors and ceiling for services must be installed and comply with the NCC 2019 – C3.12.
- In a Type A construction, opening in shafts must be in accordance with the NCC 2019 – C3.13.
- Openings for electrical, electronic, plumbing, mechanical ventilation, air-conditioning or other services penetrations requiring openings in building elements requiring an FRL must comply with the NCC 2019 – C3.15.
- Construction joints must comply with the NCC 2019 – C3.16.
- Columns protected with lightweight construction to achieve an FRL must be in accordance with the NCC 2019 – 3.17.

Access and Egress

- Number of exits required for each building classification must be determined in accordance with the NCC 2019 – D1.2.
- Class 2, 3, 5, 6, 7, 8 or 9 buildings must provide a minimum number of fire-isolated stairways and ramps complying with the NCC 2019 – D1.3.
- Distances to required exits and distances between alternative exits must comply with the NCC 2019 – D1.4 & D1.5.
 - Exits and paths of travel to exits, travel via fire-isolated and non-fire-isolated exits and external stairways or ramps in lieu of fire-isolated exits must comply with provisions in accordance with the NCC 2019 – D1.6, D1.7, D1.8 & D1.9.
 - Discharge from exits and horizontal exits must comply with the NCC 2019 – D1.10 & D1.11.

Access and Egress Cont.

- Non-required stairways, ramps and escalators must comply with the NCC 2019 – D1.12.
- Number of persons accommodated in a storey, room or mezzanine must be determined in accordance with the NCC 2019 – D1.13.
- Measurements of distances and method of measurements must comply with the NCC 2019 – D1.15.
- Plant rooms, lift machine rooms and electricity network substations may be provide alternative access in accordance with the NCC 2019 – D1.16.
- Access to lift pits must comply with the NCC 2019 – D1.17.
- Construction of fire-isolated and non-fire-isolated stairways and ramps must comply with the NCC 2019 – D2.2 & D2.3
- Separation of rising and descending stair flights and open access ramps and balconies must be in accordance with the NCC 2019 – D2.4 & D2.5.
- Smoke lobbies must comply with the NCC 2019 – D2.6.
- Access to service shafts, openings to any chute or duct, gas or other fuel services, services and equipment (including electricity meters, distribution boards or ducts; or central telecommunications distribution boards or equipment; or electrical motors or other motors serving equipment in the building) and electrical wiring installed in exits and paths of travel must comply with the NCC 2019 – D2.7.
- Enclosure of space under stairs and ramps shall be in accordance with the NCC 2019 – D2.8.
- Width of required stairways and ramps and pedestrian ramps must be in accordance with the NCC 2019 – D2.9 & D2.10.
- Fire-isolated passageways must comply with the NCC 2019 – D2.11.
- If an exit has egress to a roof of a building used as open space, the roof must be in accordance with the NCC 2019 – D2.12.
- Stairways required to a required and non-required exit and that discharge to a sloping public walkway or public road must have going and rises complying in accordance with the NCC 2019 – D2.13.
- Landing and threshold landings must be in accordance with the NCC 2019 – D2.14 & D2.15.
- Barriers to prevent falls must be provide to all stairs, ramps, roof, floor, corridor, hallway, balcony, deck, verandah, mezzanine, access bridge, any delineated path of access to a building or the like with a trafficable surface 1 metre or greater above the surface below and must be in accordance with the NCC 2019 – D2.16
- All handrails must be in accordance with the NCC 2019 – D2.17, excluding handrails referred to in D2.18. Handrails in accordance with the NCC 2019 – D2.18 must comply with AS1657.
- Doorways and doors in a resident use are of a Class 9c building, and/or servicing as a required exit or forming part of a required exit, or a doorway in a patient care area of a Class 9a health-care building must be in accordance with the NCC 2019 – D2.19.
- Swinging door in a required exit or forming part of a required exit must be in accordance with the NCC 2019 – D2.20.
- Operation of latches for doors in a or forming part of a required exit or in the path of travel must be readily operation without a key from the side that faces a person seeking egress in accordance with the NCC 2019 – D2.21(a). These requirements to not apply to doors specified in the NCC 2019 – D2.21(b). Provision in D2.21(a) also do not apply to a Class 9b building (other than a school, an early childhood centre or a building used for religious purposes) accommodating more than 100 persons (determined in accordance with the NCC 2019 – D1.13) in accordance with the NCC 2019 – D2.21(c).
- Re-entry from fire-isolated exits must comply with the NCC 2019 – D2.22.
- Signs on doors must be in accordance with the NCC 2019 – D2.23.
- Protection of openable windows must be in accordance with the NCC 2019 – D2.24.
- Timber stairways may be used within a required fire-isolated stairway or passage if constructed from fire-protected timber (in accordance with the NCC 2019 – C1.13); the building is protected by a compliant sprinkler system (in accordance with the NCC 2019 – E1.5); has fire-protection underside of the stair flight, in accordance with the NCC 2019 – D2.25.
- Buildings and parts of building must be accessible for people with a disability in accordance with Table D3.1 of the NCC 2019 – D3.1.
- Access to a building and part of building to be accessible must be in accordance with the NCC 2019 – D3.2 & D3.3.
- The following areas of a building exempt from D3.2 & D3.3 and therefore, not required to be accessible in accordance with the NCC 2019 – D3.4. *An area where access would be inappropriate because of the particular purpose for which the area is used; an area that would pose a health or safety risk for people with a disability; any path of travel providing access only to an above area.*
- Accessible carparking must be provided in accordance with the NCC 2019 – D3.5.
- In a building required to be accessible signage must be provided complying with the NCC 2019 – D3.6.

Access and Egress Cont.

- Hearing augmentation and tactile indicators must comply with the NCC 2019 – D3.7 & D3.8.
- Wheelchair seating spaces in Class 9b assembly buildings must be in accordance with the NCC 2019 -D3.9
- Swimming pools provided for people with a disability must comply with the NCC 2019 – D3.10.
- Accessible ramps must be in accordance with the NCC 2019 – D3.11.
- Glazing on an accessway must comply with the NCC 2019 – D3.12 and must be clearly marked complying with AS1428.1.
- Non-required stairways, ramps and escalators must comply with additional provision in the NCC 2019 – Specification D1.12.

Services and Equipment

- Fire fighting equipment must be in accordance with the NCC 2019 – Part E1.
- Fire sprinkler systems must comply with the NCC 2019 – Specification E1.5. & Specification E1.5a.
- Smoke hazard management must be in accordance with the NCC 2019 – Part E2. Smoke detection and alarm systems and smoke exhaust systems must comply with the NCC 2019 – Specification E2.2a & E2.2b.
- Lifts installation must be in accordance with the NCC 2019 – Part E3.
- Visibility in an emergency, exit signs and warning systems must be in accordance with the NCC 2019 – Part E4.
- Photoluminescent exit signs must comply with the NCC 2019 – Specification E4.8.

Health and Amenity

- Stormwater drainage must be in accordance with the NCC 2019 – F1.1 and comply with AS/NZS 3500.3.
- External above ground membrane must be in accordance with the NCC 2019 – F1.4 and comply with AS4654 Part 1 & 2.
- Roof covering, including concrete and terracotta roof tiles (AS2049 & AS2050), cellulose cement (AS/NZS 2908.1 & AS/NZS 1562.2), plastic (AS/NZS 4256 Part 1, 2, 3 & 5 and AS/NZS 1562.3) and metal corrugated sheeting (AS1562.1) and asphalt shingles (ASTM D3018-90, Class A) must be in accordance with the NCC 2019 – F1.5.
- Sarking-type materials used for weatherproofing of roofs and walls must be in accordance with the NCC 2019 – F1.6.
- Waterproofing of wet areas in building must be in accordance with the NCC 2019 – F1.7.
- Damp-proofing and damp-proofing of floors on the ground must comply with the NCC 2019 – F1.9 & F1.10.
- Provision of floor wastes in a Class 2 or 3 building or Class 4 part of a building must comply with the NCC 2019 – F1.11.
- Subfloor ventilation must be in accordance with the NCC 2019 – F1.12.
- Glazed assemblies must be in accordance with the NCC 2019 – F1.13 and AS2047.
- Sanitary and other facilities in residential buildings must comply with the NCC 2019 – F2.1.
- Calculation of number of occupants and facilities shall be determined in accordance with the NCC 2019 – F2.2.
- Facilities in Class 3 to 9 buildings must be in accordance with the NCC 2019 – F2.3.
- Accessible sanitary facilities must be provided in accordance with the NCC 2019 – F2.4.
- Construction of sanitary compartments must comply with the NCC 2019 – F2.5.
- Urinals and washbasin must comply with the NCC 2019 – F2.6.
- Hot and warm water and cooling water systems in a building other than a system serving only a single *sole-occupancy unit* in a Class 2 or 3 building or Class 4 part of a building must be in accordance with the NCC 2019 – F2.7 and be installed to comply with AS/NZS 3666.1.
- Waste management in a Class 9a health-care building and Class 9c building must be in accordance with the NCC 2019 – F2.8.
- Height of rooms and other spaces must be in accordance with the NCC 2019 – F3.1.
- Natural light must be provided in a Class 2, 3, 4, 9a, 9c and 9b building in accordance with the NCC 2019 – F4.1.
- Methods and extent of natural light to be provided shall be in accordance with the NCC 2019 – F4.2.
- Natural light borrowed from adjoining rooms and artificial lighting must be in accordance with the NCC 2019 – F4.3 & F4.4.
- Ventilation of habitable room, office, shop, factory, workroom, *sanitary compartment*, bathroom, shower room, laundry and any other room occupied by a person for any purpose must have natural ventilation in accordance with the NCC 2019 – F4.5 & F4.6 or mechanical ventilation or air-conditioning systems complying with AS1668.2 and AS/NZS 3666.1.

Health and Amenity Cont.

- Ventilation borrowed from adjoining rooms must comply with the NCC 2019 – F4.7.
- Sanitary compartments must not open directly into specified rooms in accordance with the NCC 2019 – F4.8. Airlocks to a sanitary compartment must comply with the NCC 2019 – F4.9.
- Every storey of carparking, except an open-deck carpark must have ventilation in accordance with the NCC 2019 – F4.11.
- A commercial kitchen must be provided with a kitchen exhaust hood in accordance with the NCC 2019 – F4.12 and comply with AS/NZS 1668.1 and AS1668.2
- Sound transmission and insulation must be in accordance with the NCC 2019 – Part F5.

Ancillary Amenity

- Minor structures and components (including swimming pools, refrigerated chambers, strong-rooms, vaults and outdoor playspaces) must be in accordance with the NCC 2019 – Part G1.
- Boilers, pressure vessels, heating appliances, fireplaces, chimneys and flue must be in accordance with the NCC 2019 – Part G2.
- Atrium construction, separation, boundary walls, balconies, roofs, fire and smoke control systems and means of egress etc. to be in accordance with the NCC 2019 – Part G3.
- Construction in Alpine Areas to comply with the NCC 2019 – Part G4.
- Construction in Bushfire Prone Area to comply with the NCC 2019 – Part G5 & Australian Standard AS3959-2009.
- Occupiable outdoor areas (including, space on a roof, balcony or similar part of a building, that is open to the sky, have direct access and is not connected to an open space) must comply with the NCC 2019 – Part G6.

Special Use Buildings

- Special use buildings to comply with the NCC 2019 – Section H. Class 9b Buildings, Public Transport Buildings, Farm Buildings and Farm Sheds must be in accordance with the NCC 2019 – Part H1, H2 & H3, respectively.

Energy Efficiency

- Energy efficiency heating and cooling leads, air-conditioning and ventilation, artificial lighting and power, heat water supply and swimming pools and spa pool plant and facilities for monitoring must comply with the NCC 2019 – Part J0.
- Thermal construction where required, must comply with and be installed in accordance with the NCC 2019 – J1.12 and AS/NZS 4859.1.
- Roof and ceiling, roof lights, walls, floors thermal construction must be in accordance with the NCC 2019 – J1.3, J1.4, J1.5 & J1.6
- Chimneys and flues of an open solid-fuel burning appliance must be fitted with a device to seal the chimney or fuel in accordance with the NCC 2019 – J3.2.
- Roof lights must be sealed, or capable of being sealed in accordance with the NCC 2019 – J3.3.
- Windows and doors must be sealed in accordance with the NCC 2019 – J3.4. These requirements do not apply to the situation specified in J3.4(b).
- Exhaust fans must be fitted with a sealing device to comply with the NCC 2019 – J3.5.
- Construction of roofs, walls and floors and any openings must be constructed to minimise air leakage in accordance with the NCC 2019 – J3.6, when forming part of the envelope or the external fabric of a habitable rooms as specified in J3.6(b). These requirements do not apply to elements specified in J3.6(c).
- Evaporative coolers must be fitted with a self-closing device of the like in accordance with the NCC 2019 – J3.7.
- Air-conditioning and ventilation systems must be in accordance with the NCC 2019 – Part J5.
- Artificial lighting in a building other than a sole-occupancy unit or a sole-occupancy unit of a Class 2 building or a Class 4 part of a building must be in accordance with the NCC 2019 – J6.2. These requirements do not apply to the scenarios specified in J6.2(c).
- Interior artificial lighting and power controls, interior decorative and display lighting and artificial light around the perimeter of a building must comply with the NCC 2019 – J6.3, 6.4 & 6.5.
- Power supply to boiling water and chilled water storage units must be in accordance with the NCC 2019 – J6.6 and Specification J6.
- Heated water supply and swimming pool and spa pool plant must be in accordance with the NCC 2019 – Part J7. Heated water supply must comply with the NCC 2019 – Volume 3 – Plumbing Code of Australia.
- Facilities for energy monitoring to be in accordance with the NCC 2019 – Part J8.



DMC
Drafting & Design

Ph: 03 5443 5328
ABN: 17 097 849 769

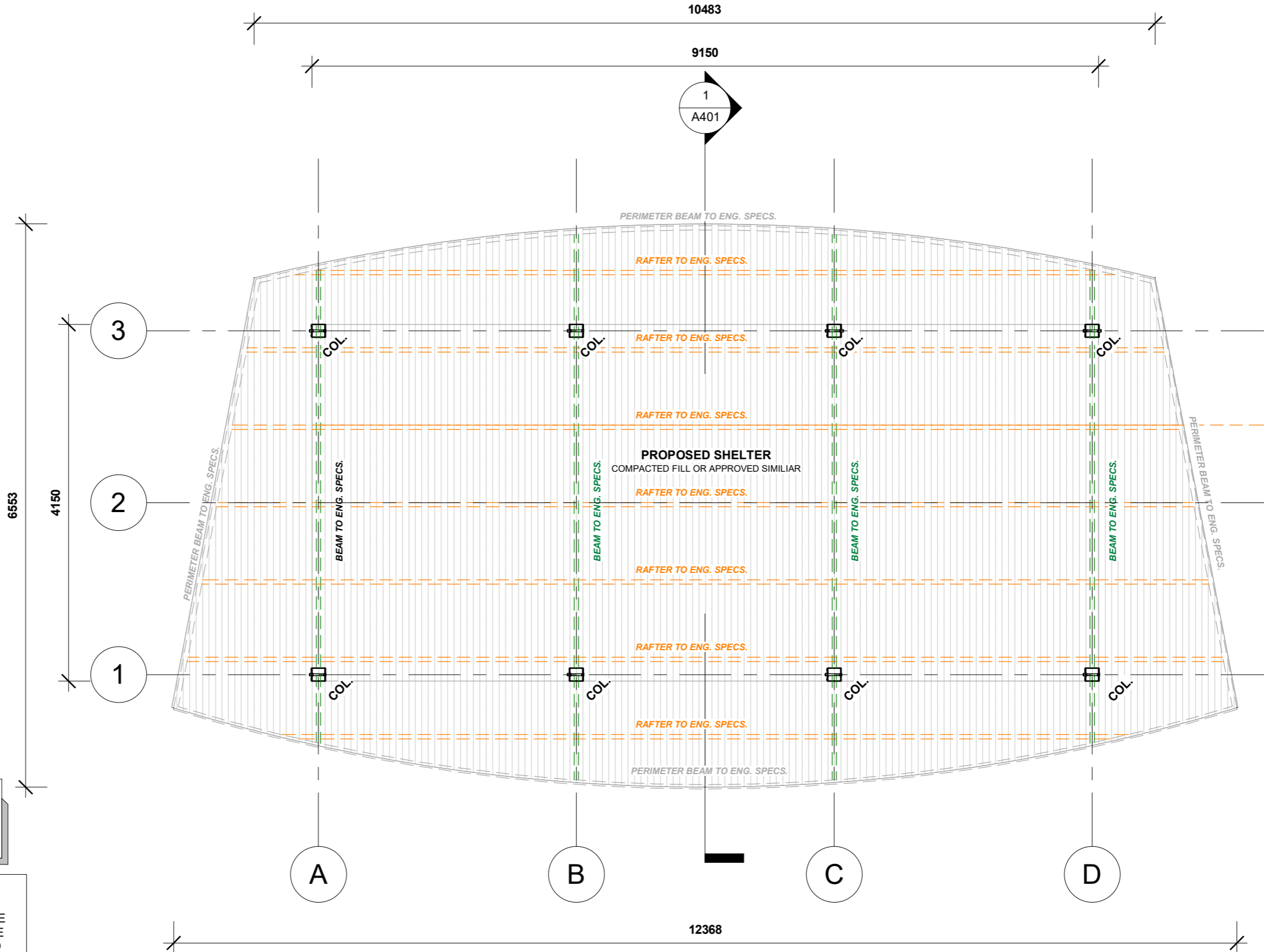
C
COPYRIGHT
(DO NOT SCALE DRAWINGS)
DP-AD 19324

REVISIONS				PROJECT CLIENT: BRAD CREME - DJA DJA WARRUNG
Rev. #	Date	Drawn	Description	
A	22.07.22	CML	PRELIM. WD	
B	17.11.22	CML	ISSUE FOR CONST.	

ADDRESS: **** SITING REQUIRED PRIOR TO ISSUE OF FINAL CONSTRUCTION DRAWINGS****	PROJECT NUMBER: DMC - DDW006	DATE: 17.11.2022	SHEET NAME: GENERAL NOTES
PROJECT: PROPOSED STANDARD SHELTER		ISSUE NUMBER: WD	
		DRAWN BY: CML	
		APPROVED BY: DMC	DRAWING NO: A103
		SCALE:	

CHECK & VERIFY ALL DIMENSIONS, LEVELS & CONDITIONS ON SITE BEFORE COSTING, ORDERING OR PREFABRICATING ANY COMPONENTS FROM THIS DRAWING.

PROPOSED AREA SCHEDULE		
NAME	AREA	SQUARES
PROPOSED SHELTER	37.97 m ²	4.09
TOTAL:	37.97 m ²	4.09



ENSURE ALL PLANS ARE READ IN CONJUNCTION WITH THE ENGINEERS DRAWINGS AND COMPUTATIONS

CUT & FILL NOTES:

<300mm FALL ACROSS BUILDING ENVELOPE - PROVIDE SITE SCRAPE TO SITE WHERE HOUSE IS LOCATED AND REMOVE ANY TOP SOIL, TREE ROOTS, DEBRIS etc. AND THE LIKE TO CREATE LEVEL BUILDING PAD.

1 PROPOSED SHELTER LAYOUT
1 : 50

SET OUT PLAN NOTES:

THIS PLAN IS A SETOUT PLAN ONLY, NOT A SLAB PLAN. CONTRACTOR IS TO READ THIS PLAN IN CONJUNCTION WITH THE ENGINEERS PLAN AND COMPUTATIONS. ALL LEVELS ON THIS PLAN ARE APPROXIMATE, EXACT LEVELS ARE TO BE CHECKED AND VERIFIED ON SITE BY THE CONTRACTOR.

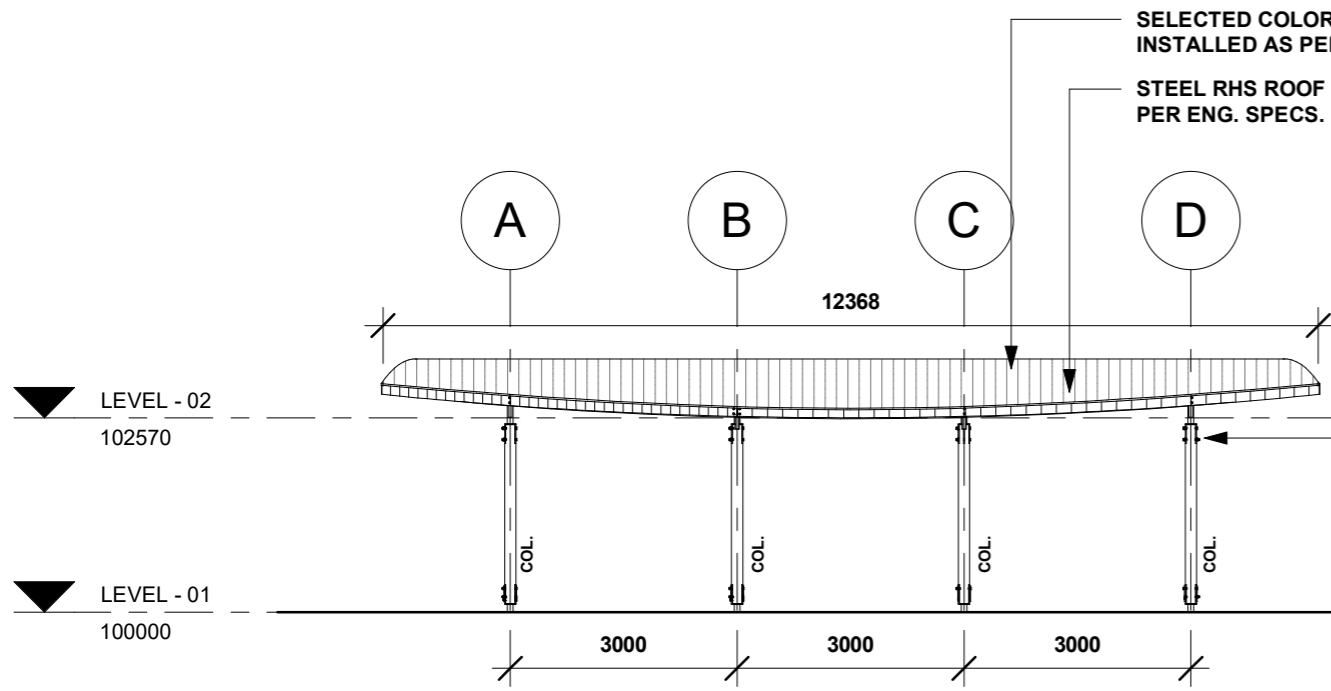
Ph: 03 5443 5328
Unit 7/4 Schoder Street, Strathdale
ABN: 17 097 849 769

© COPYRIGHT
(DO NOT SCALE DRAWINGS)
DP-AD 19324

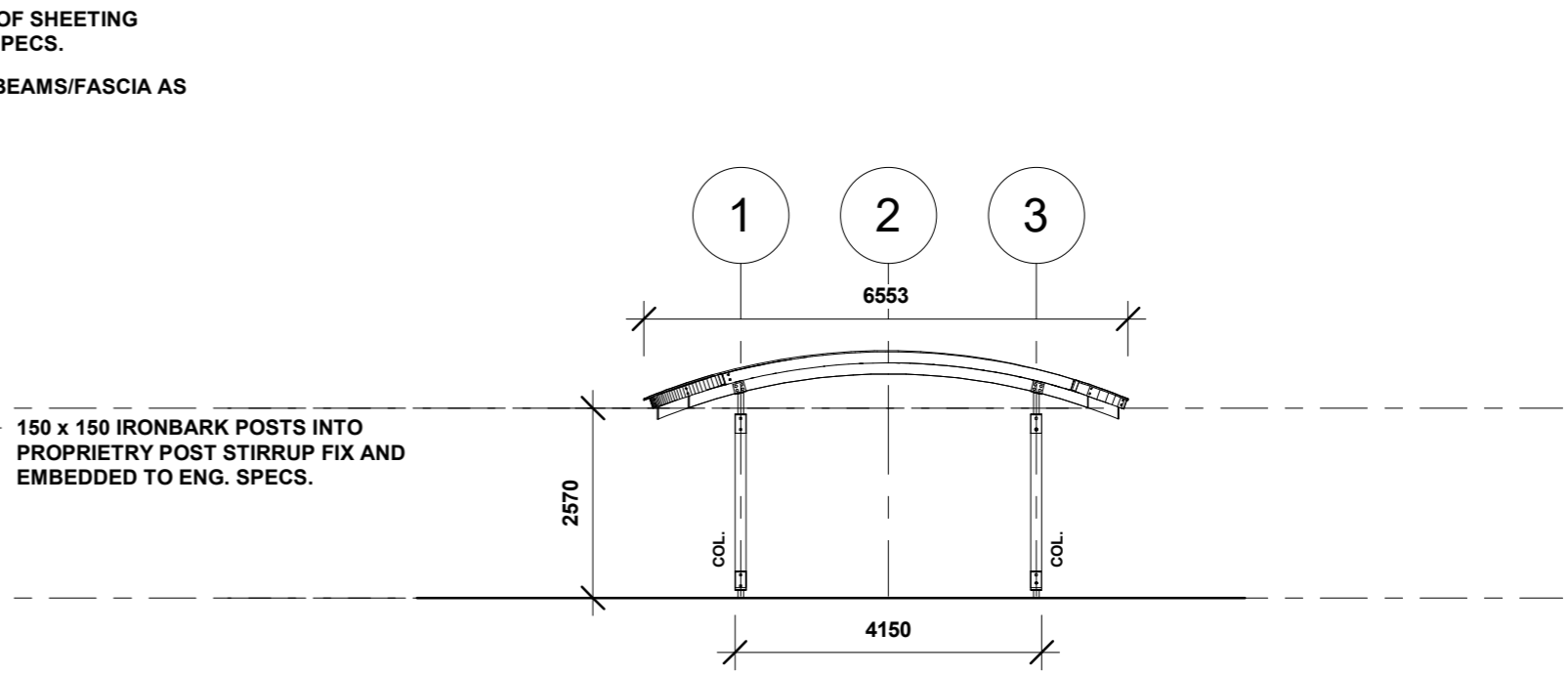
REVISIONS			
Rev. #	Date	Drawn	Description
A	22.07.22	CML	PRELIM. WD
B	17.11.22	CML	ISSUE FOR CONST.
C	23.02.23	CR	REV. FOR LANDSCAPER

PROJECT CLIENT: BRAD CREME - DJA DJA WARRUNG
ADDRESS: **** SITING REQUIRED PRIOR TO ISSUE OF FINAL CONSTRUCTION DRAWINGS***
PROJECT: PROPOSED STANDARD SHELTER

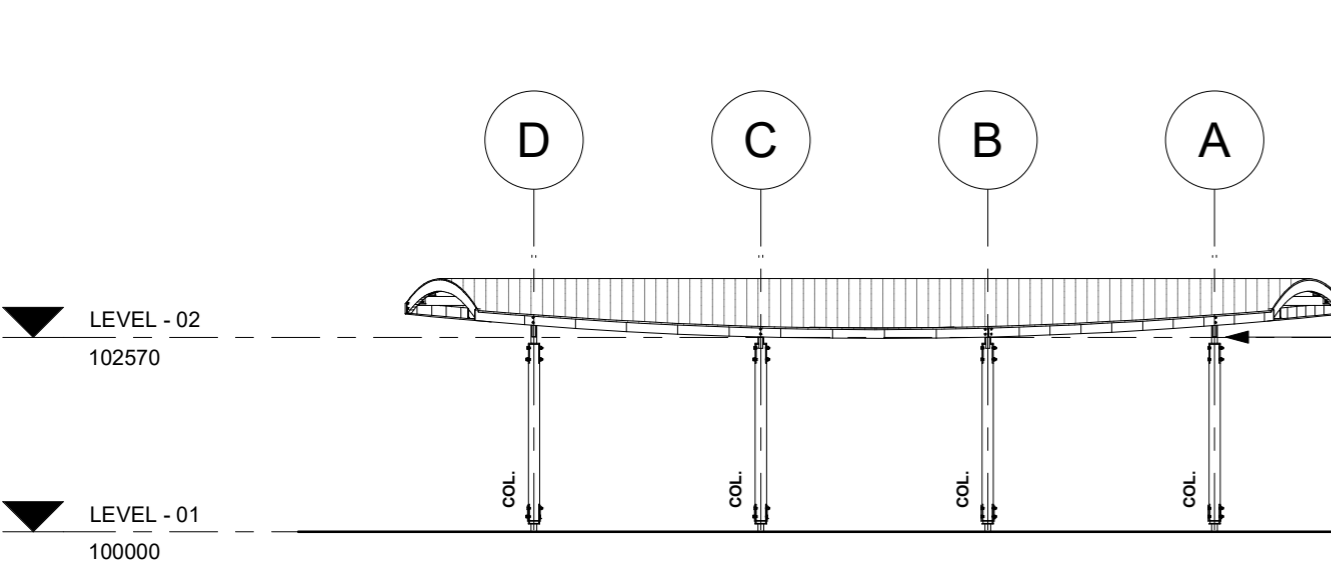
PROJECT NUMBER:	DATE:	SHEET NAME:
DMC - DDW006	23.02.2023	PROPOSED FLOOR PLAN
	ISSUE NUMBER:	
	WD	
	DRAWN BY:	
	CR	
	APPROVED BY:	
	DMC	
	SCALE:	DRAWING NO:
	1 : 50	A303



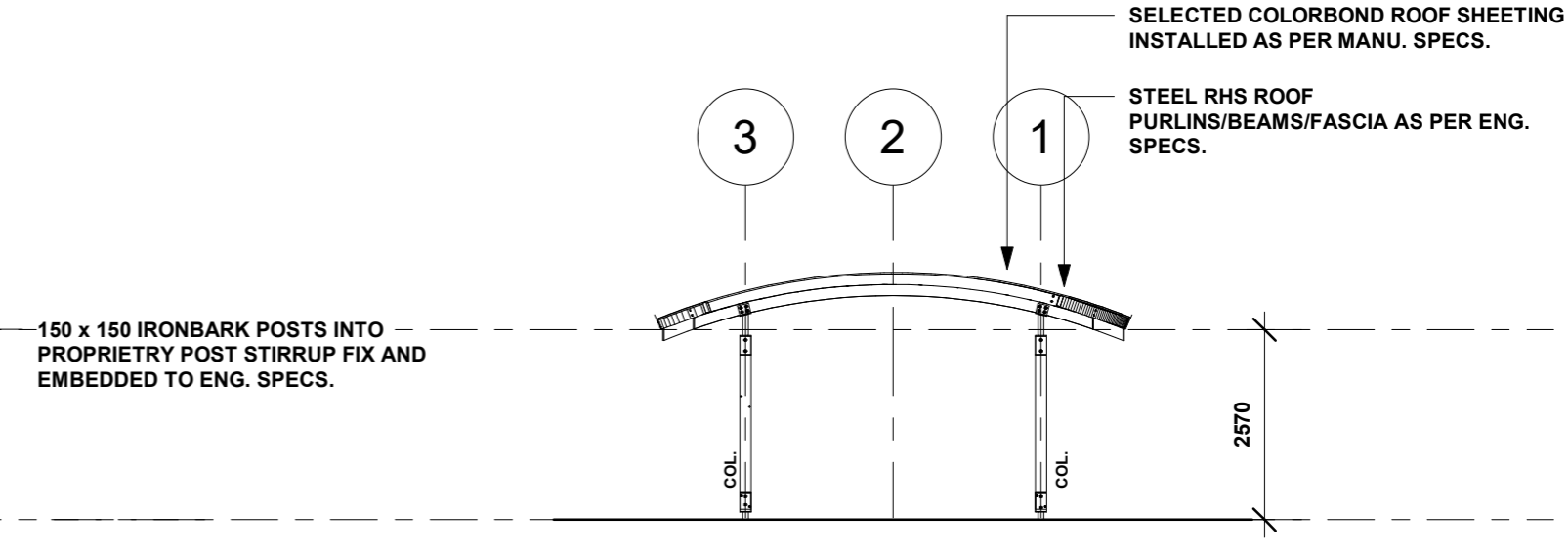
1 SHELTER ELEVATION - 01
1 : 100



2 SHELTER ELEVATION - 02
1 : 100



3 SHELTER ELEVATION - 03
1 : 100



4 SHELTER ELEVATION - 04
1 : 100

DMC
Drafting & Design
Unit 7/4 Schoder Street, Strathdale
Ph: 03 5443 5328
ABN: 17 097 849 769

©
COPYRIGHT
(DO NOT
SCALE DRAWINGS)
DP-AD 19324

REVISIONS			
Rev. #	Date	Drawn	Description
A	22.07.22	CML	PRELIM. WD
B	17.11.22	CML	ISSUE FOR CONST.
C	23.02.23	CR	REV. FOR LANDSCAPER

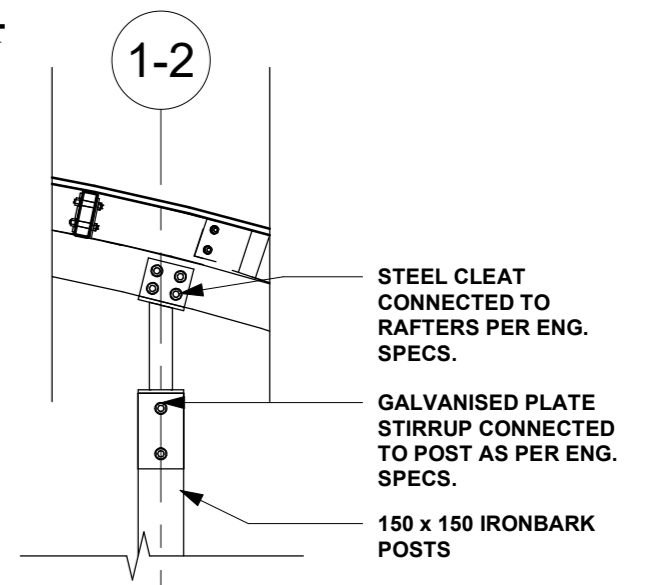
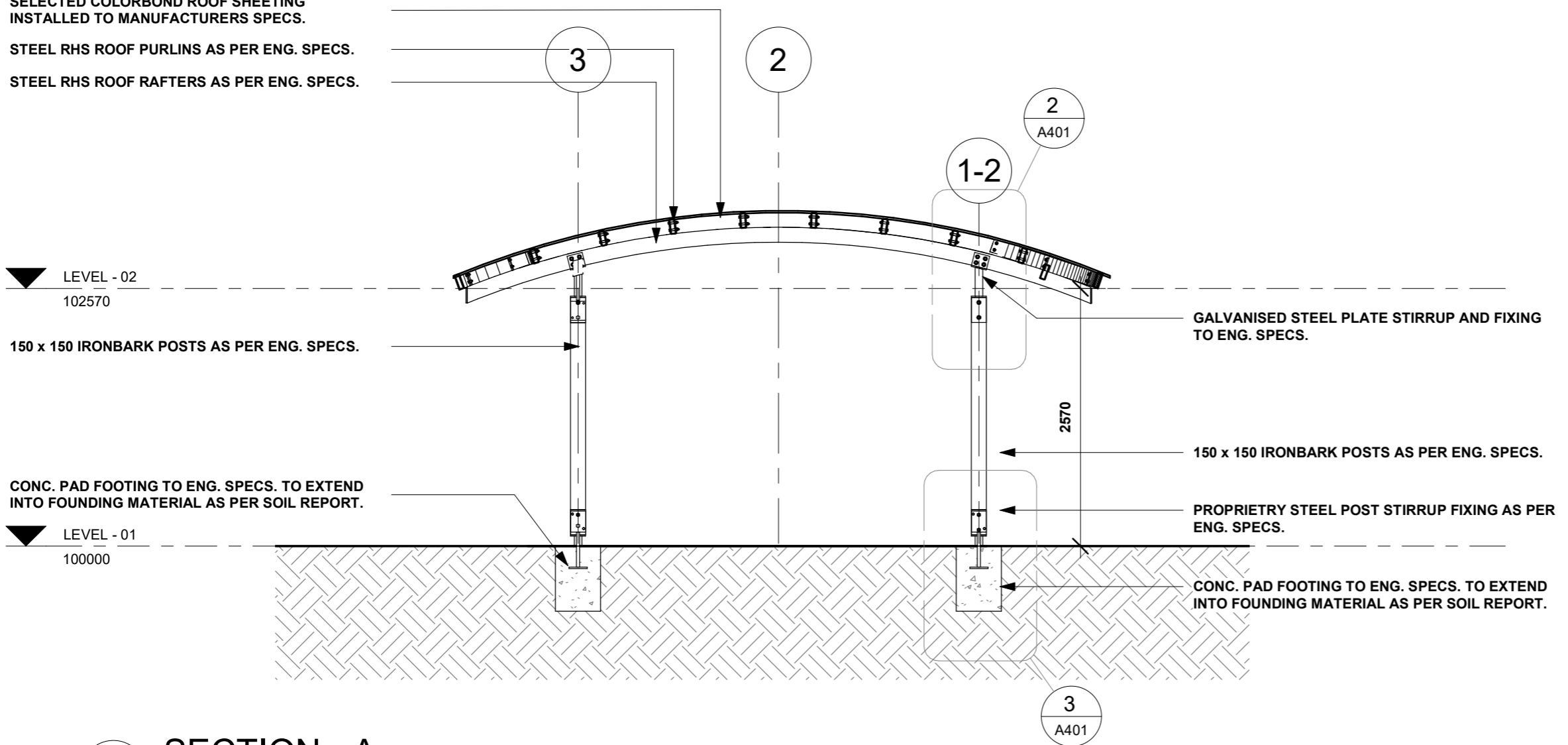
PROJECT CLIENT: BRAD CREME - DJA DJA WARRUNG
ADDRESS: **** SITING REQUIRED PRIOR TO ISSUE OF FINAL CONSTRUCTION DRAWINGS***
PROJECT: PROPOSED STANDARD SHELTER

PROJECT NUMBER: DMC - DDW006	DATE:	23.02.2023
	ISSUE NUMBER:	WD
	DRAWN BY:	CR
	APPROVED BY:	DMC

SHEET NAME: PROPOSED ELEVATIONS	
SCALE: 1 : 100	DRAWING NO: A304

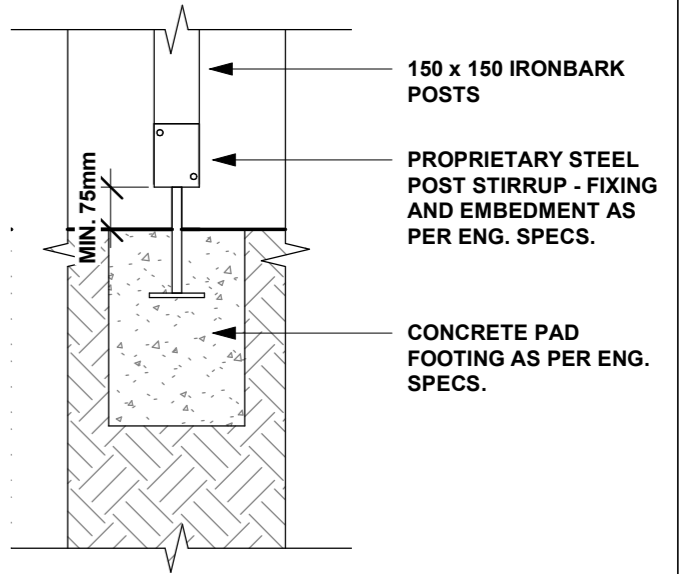
2 TYP. PLATE STIRRUP DETAIL
1 : 25

SELECTED COLORBOND ROOF SHEETING
INSTALLED TO MANUFACTURERS SPECS.
STEEL RHS ROOF PURLINS AS PER ENG. SPECS.
STEEL RHS ROOF RAFTERS AS PER ENG. SPECS.



1 SECTION - A
1 : 50

GALVANISED STEEL PLATE STIRRUP AND FIXING TO ENG. SPECS.
150 x 150 IRONBARK POSTS AS PER ENG. SPECS.
PROPRIETARY STEEL POST STIRRUP FIXING AS PER ENG. SPECS.
CONC. PAD FOOTING TO ENG. SPECS. TO EXTEND INTO FOUNDING MATERIAL AS PER SOIL REPORT.



3 TYP. POST STIRRUP DETAIL
1 : 25

ANY TIMBER THAT IS OUTSIDE ABOVE GROUND MUST BE H3 TREATED
ANY TIMBER THAT IS OUTSIDE AND HAS IN-GROUND CONTACT MUST BE H4 TREATED

ENSURE ALL PLANS ARE READ IN CONJUNCTION WITH THE ENGINEERS DRAWINGS AND COMPUTATIONS

CHECK & VERIFY ALL DIMENSIONS, LEVELS & CONDITIONS ON SITE BEFORE COSTING, ORDERING OR PREFABRICATING ANY COMPONENTS FROM THIS DRAWING.

ALL TIMBER SIZES HAVE BEEN DETERMINED FROM AS1684.4 SUPPLEMENT TABLES (N1/N2) or DESIGNIT SOFTWARE IF hySPAN HAS BEEN NOMINATED

DMC
Drafting & Design
Unit 7/4 Schoder Street, Strathdale
Ph: 03 5443 5328
ABN: 17 097 849 769

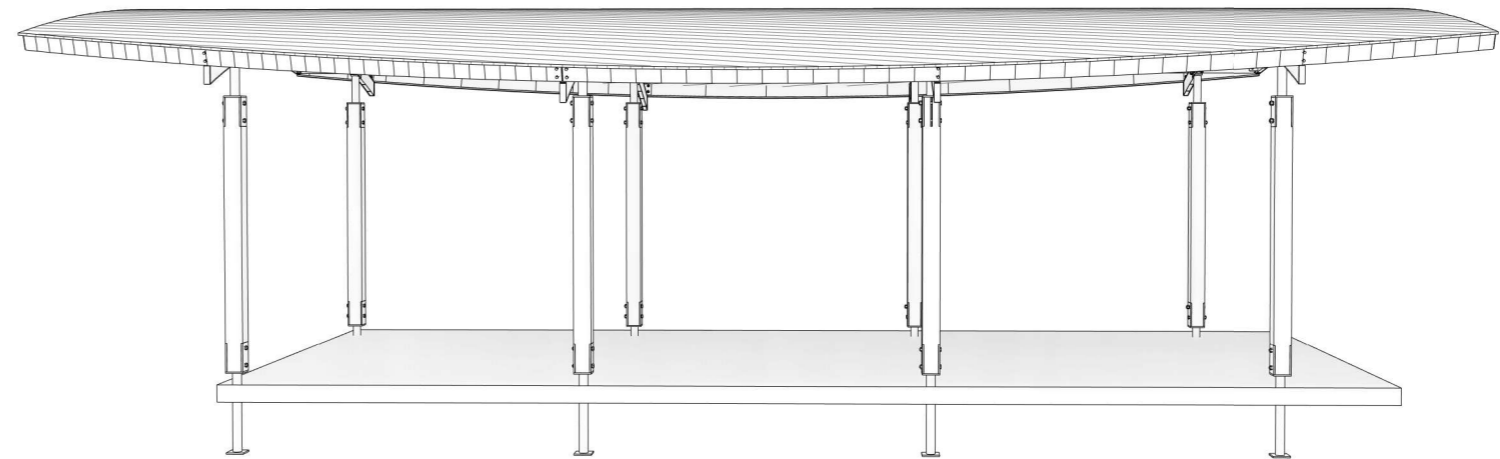
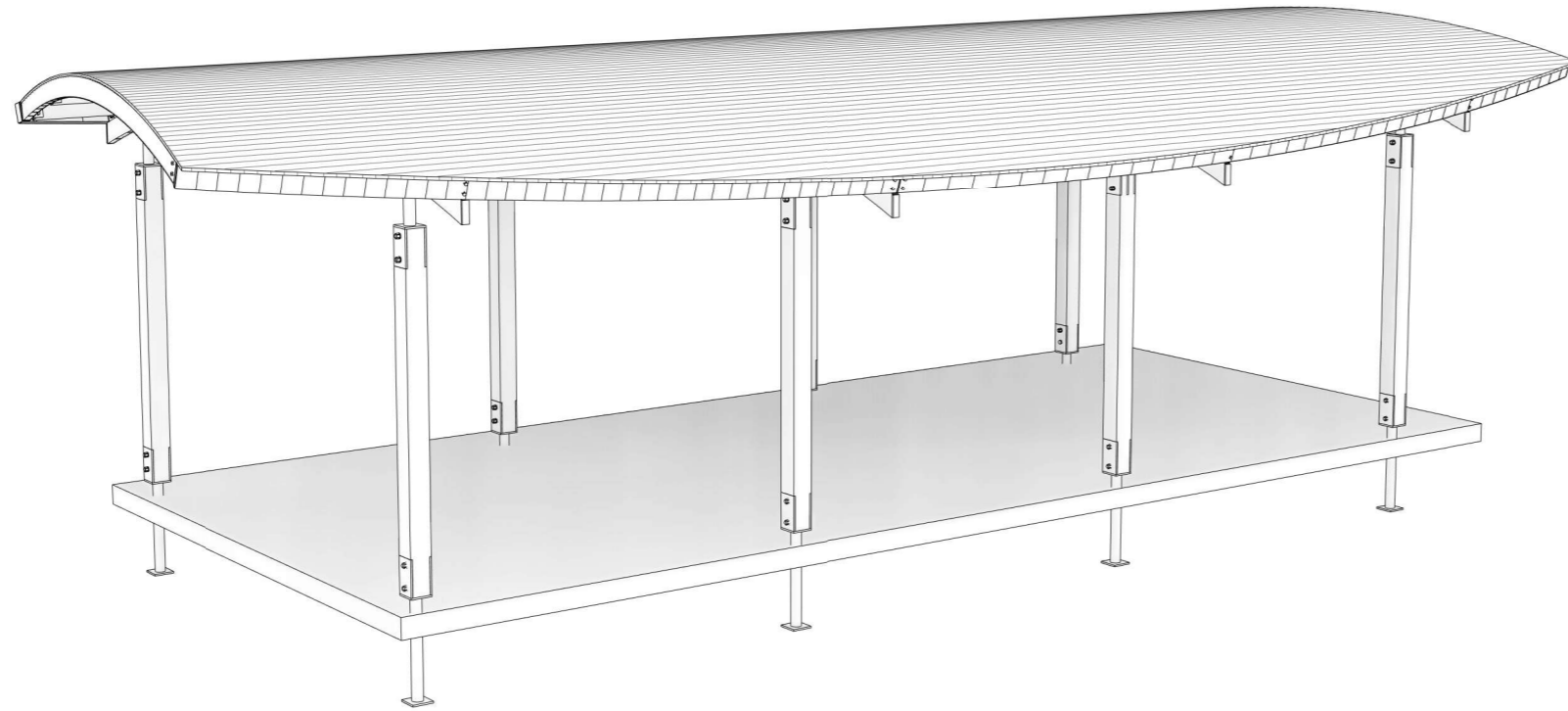
© COPYRIGHT
(DO NOT SCALE DRAWINGS)
DP-AD 19324

REVISIONS			
Rev. #	Date	Drawn	Description
A	22.07.22	CML	PRELIM. WD
B	17.11.22	CML	ISSUE FOR CONST.

PROJECT CLIENT: BRAD CREME - DJA DJA WARRUNG
ADDRESS: **** SITING REQUIRED PRIOR TO ISSUE OF FINAL CONSTRUCTION DRAWINGS***
PROJECT: PROPOSED STANDARD SHELTER

PROJECT NUMBER: DMC - DDW006
DATE: 17.11.2022
ISSUE NUMBER: WD
DRAWN BY: CML
APPROVED BY: DMC

SHEET NAME: PROPOSED SECTION
SCALE: As indicated
DRAWING NO: A401



DMC
Drafting & Design

Ph: 03 5443 5328

©
COPYRIGHT
(DO NOT
SCALE DRAWINGS)
DP-AD 19324

ABN: 17 097 849 769

REVISIONS			
Rev. #	Date	Drawn	Description
A	22.07.22	CML	PRELIM. WD
B	17.11.22	CML	ISSUE FOR CONST.

PROJECT CLIENT: BRAD CREME - DJA DJA WARRUNG

ADDRESS: **** SITING REQUIRED PRIOR TO ISSUE
OF FINAL CONSTRUCTION
DRAWINGS***

PROJECT: PROPOSED STANDARD SHELTER

PROJECT NUMBER:

DMC - DDW006

DATE: 17.11.2022

ISSUE NUMBER: WD

DRAWN BY: CML

APPROVED BY: DMC

SHEET NAME:

3D VIEWS

SCALE:

DRAWING NO: A601