



## Visual Amenity Document

Copyright of this document and the materials included in it are owned by Orbit Solutions Pty Ltd, and we reserve all rights. You may not copy or distribute any text materials or any photography, illustration, artwork or other graphic material contained for any use without first obtaining the written permission of a Director of Orbit Solutions Pty Ltd.

VCAT Reference No:

-

Site Address:

**'JUNCTION OVAL'**  
**Lakeside Drive, St Kilda VIC 3182**

For:

**CME Group Pty Ltd**

Authored by:

Chris Goss  
Architect (ARBV)  
B.Arch, B.Env.Des

Date:

7 April 2025

## CONTENTS

PAGE NO.	SECTION TITLE	SECTION NO.	PAGE TITLE	REVISION
1	COVER PAGE			
2	CONTENTS	I.	Contents	-
3	LOCATION MAP	III.	Camera Locations	-
4	PHOTOMONTAGE 01	A01.01	View HV 01A Original Photograph @ 17mm	-
		A01.02	View HV 01A AlignView with Point Cloud Dataset	-
		A01.03	View HV 01A Photograph with Proposed Building Outlines	-
		A01.04	View HV 01A Proposed Built Form	-
8	PHOTOMONTAGE 02	A02.01	View HV 01B Original Photograph @ 17mm	-
		A02.02	View HV 01B AlignView with Point Cloud Dataset	-
		A02.03	View HV 01B Photograph with Proposed Building Outlines	-
		A02.04	View HV 01B Proposed Built Form	-
12	PHOTOMONTAGE 03	A03.01	View HV 02A Original Photograph @ 17mm	-
		A03.02	View HV 02A AlignView with Point Cloud Dataset	-
		A03.03	View HV 02A Photograph with Proposed Building Outlines	-
		A03.04	View HV 02A Proposed Built Form	-
16	PHOTOMONTAGE 04	A04.01	View HV 02B Original Photograph @ 17mm	-
		A04.02	View HV 02B AlignView with Point Cloud Dataset	-
		A04.03	View HV 02B Photograph with Proposed Building Outlines	-
		A04.04	View HV 02B Proposed Built Form	-

### Orbit Solutions Pty Ltd

PO Box 736  
Port Melbourne  
VIC 3207

vic@orbitsolutions.com.au  
www.orbitsolutions.com.au

+61 3 9690 4488

### Memberships & Associations



Copyright of this document and the materials included in it are owned by Orbit Solutions Pty Ltd, and we reserve all rights. You may not copy or distribute any text materials or any photography, illustration, artwork or other graphic material contained for any use without first obtaining the written permission of a Director of Orbit Solutions Pty Ltd.

VCAT Ref No:

Site Address:

**'JUNCTION OVAL'**  
**Lakeside Drive,**  
**St Kilda VIC 3182**

For:

**CME Group Pty Ltd**

Section:

**i.**  
**CONTENTS**

Date Issued:

7 April 2025

Project No:

V24018

Revision:

-





Camera Locations

- Field of view
- Viewing direction

Note: View Cones are a representation of camera locations & indicative view directions only



Orbit Solutions Pty Ltd  
PO Box 736  
Port Melbourne  
VIC 3207  
vic@orbitsolutions.com.au  
www.orbitsolutions.com.au  
+61 3 9690 4488

Memberships & Associations



Copyright of this document and the materials included in it are owned by Orbit Solutions Pty Ltd, and we reserve all rights. You may not copy or distribute any text materials or any photography, illustration, artwork or other graphic material contained for any use without first obtaining the written permission of a Director of Orbit Solutions Pty Ltd.

VCAT Ref No: -

Site Address:  
**'JUNCTION OVAL'**  
**Lakeside Drive,**  
**St Kilda VIC 3182**

For:  
**CME Group Pty Ltd**

Section:  
**ii.**  
**LOCATION MAP**

Date Issued:  
7 April 2025

Project No:  
V24018

Revision:  
-





View HV 01A - Original Photograph @ 17mm

PHOTOGRAPH DETAILS

Location description: Service vehicle entry, south of St Kilda Cricket club pavilion, Fitzroy st end of oval, on bitument, facing approx North to target

Date & time taken: 09:52am EDST On 21/02/2025

Height from ground: 1.65m

Distance to site: 74.32m

EQUIPMENT SPECIFICATIONS

Camera: Canon 5DSR Full Frame

Lens: Canon TSE 17mm F2.8 Shift Lens

Focal length: 17mm

Field of view (FOV): 93.0 deg (horizontal)



Orbit Solutions Pty Ltd

PO Box 736  
Port Melbourne  
VIC 3207

vic@orbitsolutions.com.au  
www.orbitsolutions.com.au

+61 3 9690 4488

Memberships & Associations

Australian  
Institute of  
Architects

vpela  
Victorian Planning &  
Environmental Law Association

Copyright of this document and the materials included in it are owned by Orbit Solutions Pty Ltd, and we reserve all rights. You may not copy or distribute any text materials or any photography, illustration, artwork or other graphic material contained for any use without first obtaining the written permission of a Director of Orbit Solutions Pty Ltd.

VCAT Ref No: -

Site Address:  
**'JUNCTION OVAL'**  
**Lakeside Drive,**  
**St Kilda VIC 3182**

For:  
**CME Group Pty Ltd**

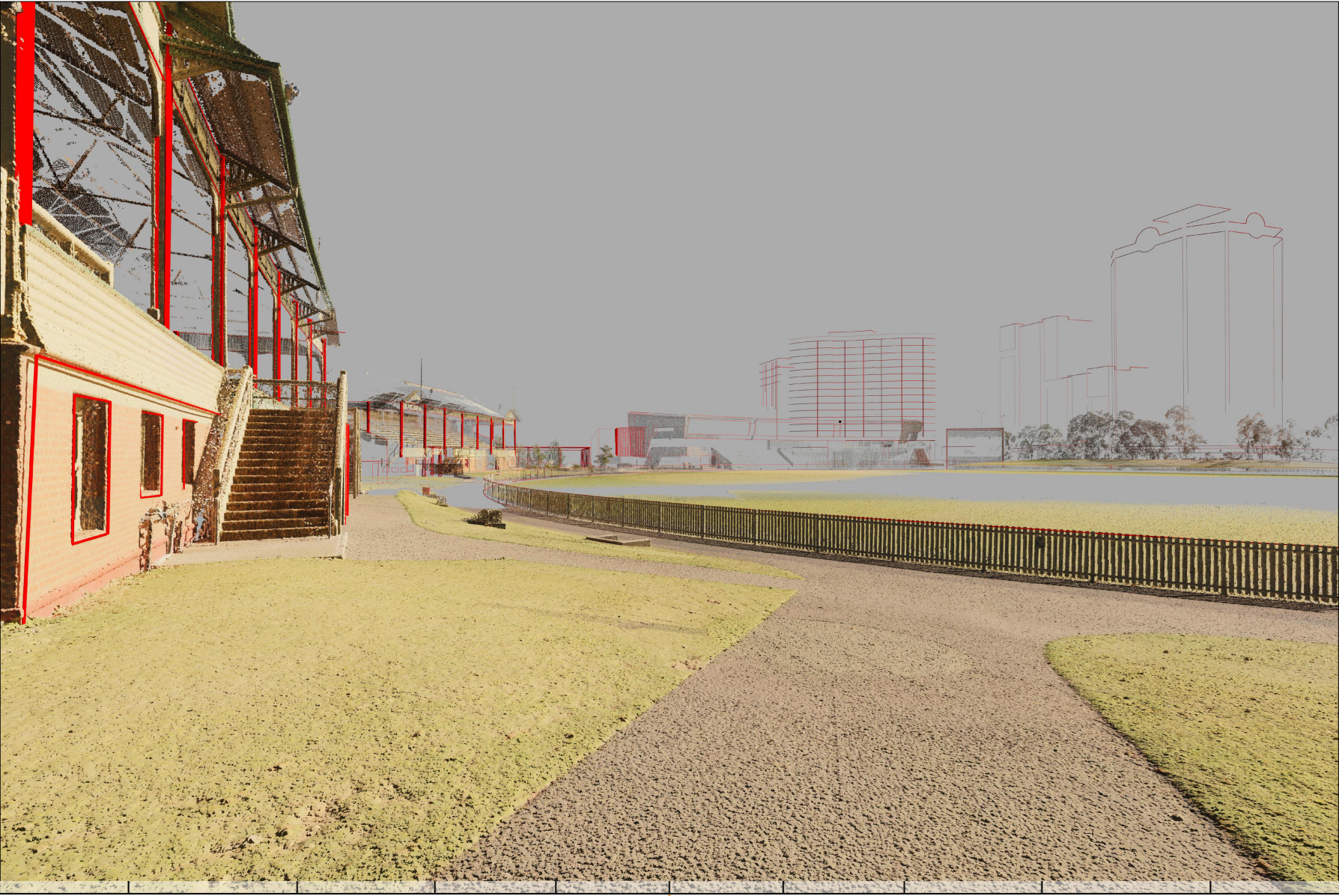
Section:  
**A01.01**  
**PHOTOMONTAGE 01**

Date Issued: 7 April 2025

Project No: V24018

Revision: -

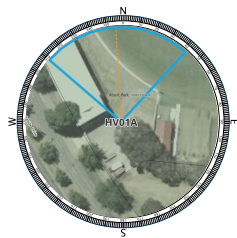




View HV 01A - AlignView with Point Cloud Dataset

FIELD WORK DETAILS

Easting:	322261.94
Northing:	5808162.88
Date taken:	22/02/2025
Ground (RL):	10.29m
Height from ground:	1.65m
LIDAR Scanner:	Leica Cyclone Register 360
Software:	Autodesk ReCap, CloudCompare



LEGEND

Field of view

Viewing direction

Point Cloud Survey Top View



Orbit Solutions Pty Ltd

PO Box 736  
Port Melbourne  
VIC 3207

[vic@orbitsolutions.com.au](mailto:vic@orbitsolutions.com.au)  
[www.orbitsolutions.com.au](http://www.orbitsolutions.com.au)

+61 3 9690 4488

Memberships & Associations

 Australian Institute of Architects

 Victorian Planning & Environmental Law Association

**THIS IS NOT A PHOTOGRAPH**

It is a Point Cloud Survey of the camera position by the licensed land surveyor.

This is used to precisely locate and orient the 3D camera to match the photograph.

See Statement of Evidence.

Copyright of this document and the materials included in it are owned by Orbit Solutions Pty Ltd, and we reserve all rights. You may not copy or distribute any text materials or any photography, illustration, artwork or other graphic material contained for any use without first obtaining the written permission of a Director of Orbit Solutions Pty Ltd.

VCAT Ref No: -

Site Address:

**'JUNCTION OVAL'**  
**Lakeside Drive,**  
**St Kilda VIC 3182**

For:

**CME Group Pty Ltd**

Section:

**A01.02**  
**PHOTOMONTAGE 01**

Date Issued:

7 April 2025

Project No:

V24018

Revision:

-





View HV 01A - Photograph with Proposed Building Outlines

- Proposed built form – Unoccluded silhouette (excludes vegetation)
- Proposed built form – Silhouette that is occluded by existing built form (excludes vegetation)



Copyright of this document and the materials included in it are owned by Orbit Solutions Pty Ltd, and we reserve all rights. You may not copy or distribute any text materials or any photography, illustration, artwork or other graphic material contained for any use without first obtaining the written permission of a Director of Orbit Solutions Pty Ltd.

VCAT Ref No: -

Site Address:  
**'JUNCTION OVAL'**  
**Lakeside Drive,**  
**St Kilda VIC 3182**

For:  
**CME Group Pty Ltd**

Section:  
**A01.03**  
**PHOTOMONTAGE 01**

Date Issued:  
7 April 2025

Project No:  
V24018

Revision: -







View HV 01A - Proposed Built Form



**Orbit Solutions Pty Ltd**  
PO Box 736  
Port Melbourne  
VIC 3207  
vic@orbitsolutions.com.au  
www.orbitsolutions.com.au  
**+61 3 9690 4488**

**Memberships & Associations**  
 Australian Institute of Architects  
 Victorian Planning & Environmental Law Association

Copyright of this document and the materials included in it are owned by Orbit Solutions Pty Ltd, and we reserve all rights. You may not copy or distribute any text materials or any photography, illustration, artwork or other graphic material contained for any use without first obtaining the written permission of a Director of Orbit Solutions Pty Ltd.

**VCAT Ref No:** -

**Site Address:**  
**'JUNCTION OVAL'**  
**Lakeside Drive,**  
**St Kilda VIC 3182**

**For:**  
**CME Group Pty Ltd**

**Section:**  
**A01.04**  
**PHOTOMONTAGE 01**

**Date Issued:**  
7 April 2025

**Project No:**  
V24018

**Revision:**  
-







View HV 01B - Original Photograph @ 17mm

PHOTOGRAPH DETAILS	
Location description:	Service vehicle entry, south of St Kilda Cricket club pavilion, Fitzroy st end of oval, on bitument, facing approx North to target
Date & time taken:	09:51am EDST On 21/02/2025
Height from ground:	1.65m
Distance to site:	74.32m

EQUIPMENT SPECIFICATIONS	
Camera:	Canon 5DSR Full Frame
Lens:	Canon TSE 17mm F2.8 Shift Lens
Focal length:	17mm
Field of view (FOV):	93.0 deg (horizontal)



Orbit Solutions Pty Ltd

PO Box 736  
Port Melbourne  
VIC 3207

vic@orbitsolutions.com.au  
www.orbitsolutions.com.au

+61 3 9690 4488

Memberships & Associations



Copyright of this document and the materials included in it are owned by Orbit Solutions Pty Ltd, and we reserve all rights. You may not copy or distribute any text materials or any photography, illustration, artwork or other graphic material contained for any use without first obtaining the written permission of a Director of Orbit Solutions Pty Ltd.

VCAT Ref No: -

Site Address:  
**'JUNCTION OVAL'**  
**Lakeside Drive,**  
**St Kilda VIC 3182**

For:  
**CME Group Pty Ltd**

Section:  
**A02.01**  
**PHOTOMONTAGE 02**

Date Issued: 7 April 2025  
Project No: V24018  
Revision: -





Orbit Solutions Pty Ltd

PO Box 736  
Port Melbourne  
VIC 3207

vic@orbitsolutions.com.au  
www.orbitsolutions.com.au

+61 3 9690 4488

Memberships & Associations



THIS IS NOT A PHOTOGRAPH

It is a Point Cloud Survey of the camera position by the licensed land surveyor.

This is used to precisely locate and orient the 3D camera to match the photograph.

See Statement of Evidence.

Copyright of this document and the materials included in it are owned by Orbit Solutions Pty Ltd, and we reserve all rights. You may not copy or distribute any text materials or any photography, illustration, artwork or other graphic material contained for any use without first obtaining the written permission of a Director of Orbit Solutions Pty Ltd.

VCAT Ref No:

Site Address:

**'JUNCTION OVAL'**  
**Lakeside Drive,**  
**St Kilda VIC 3182**

For:

**CME Group Pty Ltd**

Section:

**A02.02**  
**PHOTOMONTAGE 02**

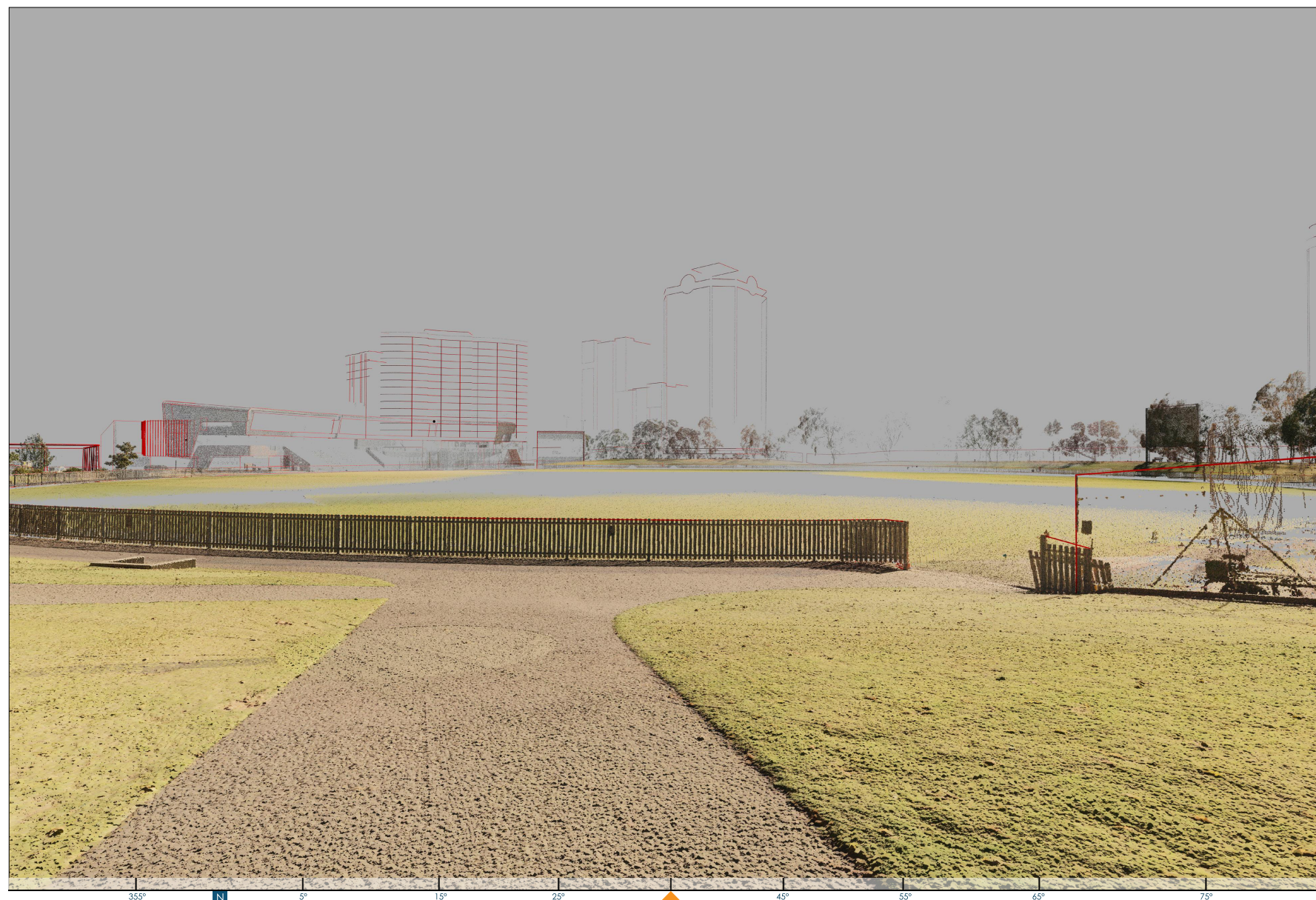
Date Issued:

7 April 2025

Project No:

V24018

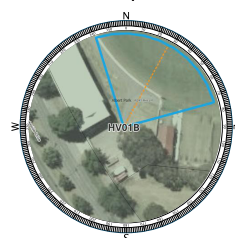
Revision:



View HV 01B - AlignView with Point Cloud Dataset and Proposed Building Outline

FIELD WORK DETAILS

Easting: 322261.94  
Northing: 5808162.88  
Date taken: 22/02/2025  
Ground (RL): 10.29m  
Height from ground: 1.65m  
LIDAR Scanner: Leica Cyclone Register 360  
Software: Autodesk ReCap, CloudCompare



LEGEND

— Field of view  
- - - Viewing direction

Point Cloud Survey Top View







View HV 01B - Photograph with Proposed Building Outlines

- Proposed built form – Unoccluded silhouette (excludes vegetation)
- Proposed built form – Silhouette that is occluded by existing built form (excludes vegetation)



Orbit Solutions Pty Ltd  
PO Box 736  
Port Melbourne  
VIC 3207  
vic@orbitsolutions.com.au  
www.orbitsolutions.com.au  
+61 3 9690 4488

Memberships & Associations  
Australian Institute of Architects  
vpela  
Victorian Planning & Environmental Law Association

Copyright of this document and the materials included in it are owned by Orbit Solutions Pty Ltd, and we reserve all rights. You may not copy or distribute any text materials or any photography, illustration, artwork or other graphic material contained for any use without first obtaining the written permission of a Director of Orbit Solutions Pty Ltd.

VCAT Ref No: -

Site Address:  
**'JUNCTION OVAL'**  
Lakeside Drive,  
St Kilda VIC 3182

For:  
CME Group Pty Ltd

Section:  
**A02.03**  
**PHOTOMONTAGE 02**

Date Issued:  
7 April 2025  
Project No:  
V24018  
Revision: -





View HV 01B - Proposed Built Form



Orbit Solutions Pty Ltd

PO Box 736  
Port Melbourne  
VIC 3207  
  
vic@orbitsolutions.com.au  
www.orbitsolutions.com.au

+61 3 9690 4488

Memberships & Associations



Copyright of this document and the materials included in it are owned by Orbit Solutions Pty Ltd, and we reserve all rights. You may not copy or distribute any text materials or any photography, illustration, artwork or other graphic material contained for any use without first obtaining the written permission of a Director of Orbit Solutions Pty Ltd.

VCAT Ref No: -

Site Address:  
**'JUNCTION OVAL'**  
**Lakeside Drive,**  
**St Kilda VIC 3182**

For:  
**CME Group Pty Ltd**

Section:  
**A02.04**  
**PHOTOMONTAGE 02**

Date Issued:  
7 April 2025

Project No:  
V24018

Revision:  
-







View HV 02A - Original Photograph @17mm

PHOTOGRAPH DETAILS

Location description: Northern concourse around boundary fencing, on bitumen, slightly North East of Citi Power Centre pavilion, facing approx South to target

Date & time taken: 10:10am EDST On 21/02/2025

Height from ground: 1.65m

Distance to site: 93.60m

EQUIPMENT SPECIFICATIONS

Camera: Canon 5DSR Full Frame

Lens: Canon TSE 17mm F2.8 Shift Lens

Focal length: 17mm

Field of view (FOV): 93.0 deg (horizontal)



**Orbit Solutions Pty Ltd**

PO Box 736  
Port Melbourne  
VIC 3207

vic@orbitsolutions.com.au  
www.orbitsolutions.com.au

**+61 3 9690 4488**

Memberships & Associations

 Australian Institute of Architects

 Victorian Planning & Environmental Law Association

Copyright of this document and the materials included in it are owned by Orbit Solutions Pty Ltd, and we reserve all rights. You may not copy or distribute any text materials or any photography, illustration, artwork or other graphic material contained for any use without first obtaining the written permission of a Director of Orbit Solutions Pty Ltd.

VCAT Ref No: -

Site Address:

**'JUNCTION OVAL'**  
**Lakeside Drive,**  
**St Kilda VIC 3182**

For:

**CME Group Pty Ltd**

Section:

**A03.01**  
**PHOTOMONTAGE 03**

Date Issued: 7 April 2025

Project No: V24018

Revision: -



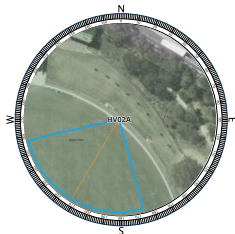




View HV 02A - AlignView with Point Cloud Dataset

FIELD WORK DETAILS

Easting: 322355.95  
Northing: 5808302.10  
Date taken: 22/02/2025  
Ground (RL): 9.23m  
Height from ground: 1.65m  
LIDAR Scanner: Leica Cyclone Register 360  
Software: Autodesk ReCap, CloudCompare



LEGEND  
— Field of view  
--- Viewing direction

Point Cloud Survey Top View



Orbit Solutions Pty Ltd

PO Box 736  
Port Melbourne  
VIC 3207

vic@orbitsolutions.com.au  
www.orbitsolutions.com.au

+61 3 9690 4488

Memberships & Associations



Australian  
Institute of  
Architects



Victorian Planning &  
Environmental Law Association

THIS IS NOT A PHOTOGRAPH

It is a Point Cloud Survey of the camera  
position by the licensed land surveyor.

This is used to precisely locate and orient the  
3D camera to match the photograph.

See Statement of Evidence.

Copyright of this document and the materials  
included in it are owned by Orbit Solutions  
Pty Ltd, and we reserve all rights. You may  
not copy or distribute any text materials or  
any photography, illustration, artwork or  
other graphic material contained for any use  
without first obtaining the written permission  
of a Director of Orbit Solutions Pty Ltd.

VCAT Ref No:

Site Address:

**'JUNCTION OVAL'**  
**Lakeside Drive,**  
**St Kilda VIC 3182**

For:

**CME Group Pty Ltd**

Section:

**A03.02**  
**PHOTOMONTAGE 03**

Date Issued:

7 April 2025

Project No:

V24018

Revision:







View HV 02A - Photograph with Proposed Building Outlines

- Proposed built form – Unoccluded silhouette (excludes vegetation)
- Proposed built form – Silhouette that is occluded by existing built form (excludes vegetation)



Orbit Solutions Pty Ltd

PO Box 736  
Port Melbourne  
VIC 3207

[vic@orbitsolutions.com.au](mailto:vic@orbitsolutions.com.au)  
[www.orbitsolutions.com.au](http://www.orbitsolutions.com.au)

+61 3 9690 4488

Memberships & Associations



Copyright of this document and the materials included in it are owned by Orbit Solutions Pty Ltd, and we reserve all rights. You may not copy or distribute any text materials or any photography, illustration, artwork or other graphic material contained for any use without first obtaining the written permission of a Director of Orbit Solutions Pty Ltd.

VCAT Ref No:

Site Address:

**'JUNCTION OVAL'**  
**Lakeside Drive,**  
**St Kilda VIC 3182**

For:

**CME Group Pty Ltd**

Section:

**A03.03**  
**PHOTOMONTAGE 03**

Date Issued:

7 April 2025

Project No:

V24018

Revision:







View HV 02A - Proposed Built Form



**Orbit Solutions Pty Ltd**  
PO Box 736  
Port Melbourne  
VIC 3207  
[vic@orbitsolutions.com.au](mailto:vic@orbitsolutions.com.au)  
[www.orbitsolutions.com.au](http://www.orbitsolutions.com.au)  
**+61 3 9690 4488**

**Memberships & Associations**  
 **Australian  
Institute of  
Architects**  
 **Victorian Planning &  
Environmental Law Association**

Copyright of this document and the materials included in it are owned by Orbit Solutions Pty Ltd, and we reserve all rights. You may not copy or distribute any text materials or any photography, illustration, artwork or other graphic material contained for any use without first obtaining the written permission of a Director of Orbit Solutions Pty Ltd.

**VCAT Ref No:** -

**Site Address:**  
**'JUNCTION OVAL'**  
**Lakeside Drive,**  
**St Kilda VIC 3182**

**For:**  
**CME Group Pty Ltd**

**Section:**  
**A03.04**  
**PHOTOMONTAGE 03**

**Date Issued:**  
7 April 2025

**Project No:**  
V24018

**Revision:** -







View HV 02B - Original Photograph @17mm

PHOTOGRAPH DETAILS

Location description: Northern concourse around boundary fencing, on bitumen, slightly North East of Citi Power Centre pavilion, facing approx South to target

Date & time taken: 10:10am EDST On 21/02/2025

Height from ground: 1.65m

Distance to site: 93.60m

EQUIPMENT SPECIFICATIONS

Camera: Canon 5DSR Full Frame

Lens: Canon TSE 17mm F2.8 Shift Lens

Focal length: 17mm

Field of view (FOV): 93.0 deg (horizontal)



Orbit Solutions Pty Ltd

PO Box 736  
Port Melbourne  
VIC 3207

vic@orbitsolutions.com.au  
www.orbitsolutions.com.au

+61 3 9690 4488

Memberships & Associations



Copyright of this document and the materials included in it are owned by Orbit Solutions Pty Ltd, and we reserve all rights. You may not copy or distribute any text materials or any photography, illustration, artwork or other graphic material contained for any use without first obtaining the written permission of a Director of Orbit Solutions Pty Ltd.

VCAT Ref No: -

Site Address:  
**'JUNCTION OVAL'**  
**Lakeside Drive,**  
**St Kilda VIC 3182**

For:  
**CME Group Pty Ltd**

Section:  
**A04.01**  
**PHOTOMONTAGE 04**

Date Issued: 7 April 2025

Project No: V24018

Revision: -





## Memberships & Associations



**Australian  
Institute of  
Architects**



Victorian Planning &  
Environmental Law Association

THIS IS NOT A PHOTOGRAPH

It is a Point Cloud Survey of the camera position by the licensed land surveyor.

This is used to precisely locate and orient the 3D camera to match the photograph.

See Statement of Evidence.

Copyright of this document and the materials included in it are owned by Orbit Solutions Pty Ltd, and we reserve all rights. You may not copy or distribute any text materials or any photography, illustration, artwork or other graphic material contained for any use without first obtaining the written permission of a Director of Orbit Solutions Pty Ltd.

VCAT Ref No:

Site Address:

**'JUNCTION OVAL'**  
Lakeside Drive,  
St Kilda VIC 3182

For:

CME Group Pty Ltd

Section:

**A04.02**  
**PHOTOMONTAGE 04**

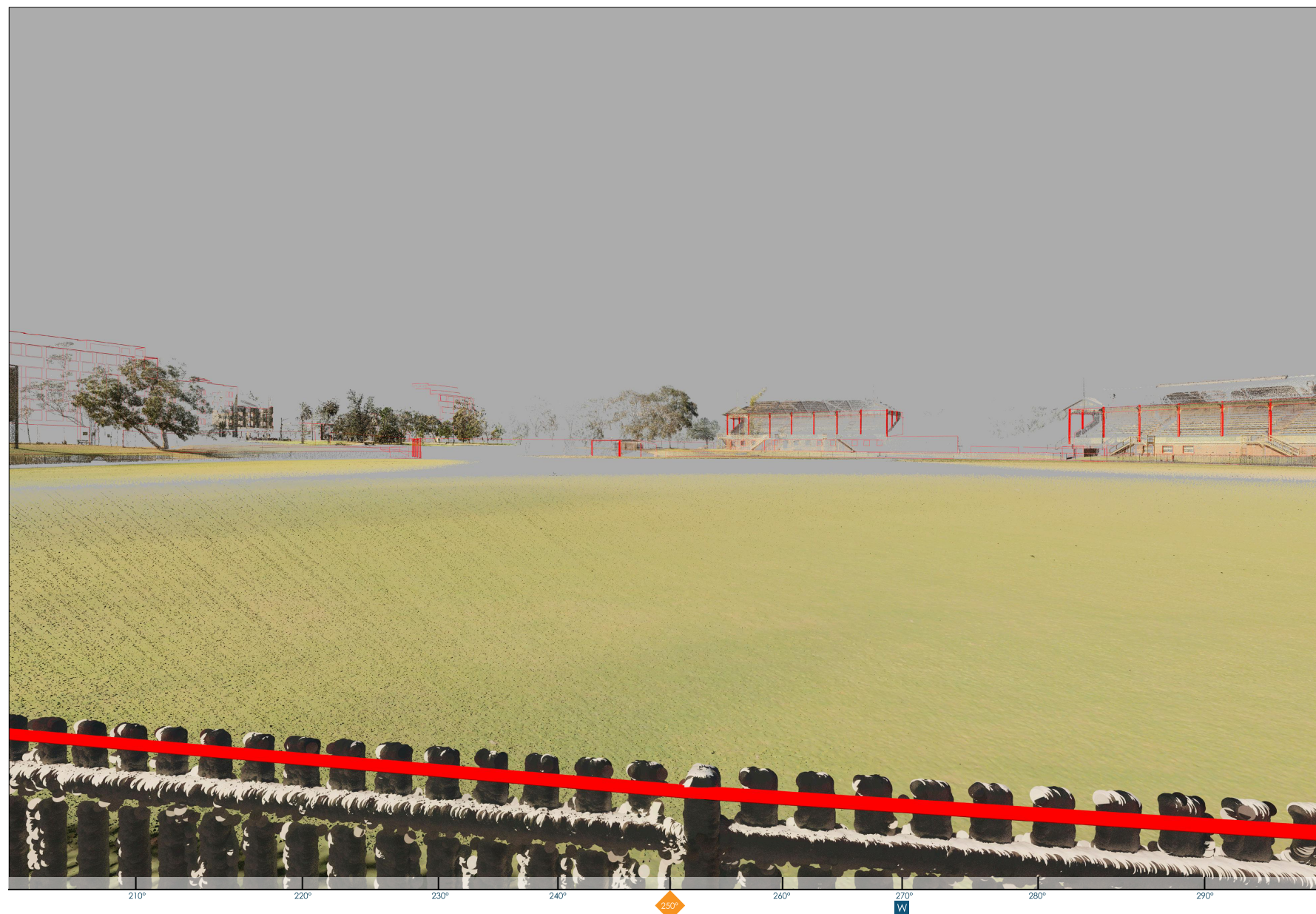
Date Issued:

7 April 2025

Project No:

V24018

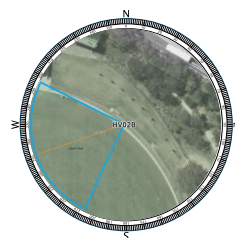
Revision:



## View HV 02B - AlignView with Point Cloud Dataset

## FIELD WORK DETAILS

Easting:	322355.95
Northing:	5808302.10
Date taken:	22/02/2025
Ground (RL):	9.23m
Height from ground:	1.65m
LiDAR Scanner:	Leica Cyclone Register 360
Software:	Autodesk ReCap, CloudCompare



### LEGEND

 Field of view  
 Viewing direction

### Point Cloud Survey Top View







View HV 02B - Photograph with Proposed Building Outlines

- Proposed built form – Unoccluded silhouette (excludes vegetation)
- Proposed built form – Silhouette that is occluded by existing built form (excludes vegetation)



Orbit Solutions Pty Ltd

PO Box 736  
Port Melbourne  
VIC 3207

vic@orbitsolutions.com.au  
www.orbitsolutions.com.au

+61 3 9690 4488

Memberships & Associations



Copyright of this document and the materials included in it are owned by Orbit Solutions Pty Ltd, and we reserve all rights. You may not copy or distribute any text materials or any photography, illustration, artwork or other graphic material contained for any use without first obtaining the written permission of a Director of Orbit Solutions Pty Ltd.

VCAT Ref No:

Site Address:

**'JUNCTION OVAL'**  
**Lakeside Drive,**  
**St Kilda VIC 3182**

For:

**CME Group Pty Ltd**

Section:

**A04.03**  
**PHOTOMONTAGE 04**

Date Issued:

7 April 2025

Project No:

V24018

Revision:







View HV 02B - Proposed Built Form



Orbit Solutions Pty Ltd

PO Box 736  
Port Melbourne  
VIC 3207  
  
vic@orbitsolutions.com.au  
www.orbitsolutions.com.au

+61 3 9690 4488

Memberships & Associations

-  Australian Institute of Architects
-  Victorian Planning & Environmental Law Association

Copyright of this document and the materials included in it are owned by Orbit Solutions Pty Ltd, and we reserve all rights. You may not copy or distribute any text materials or any photography, illustration, artwork or other graphic material contained for any use without first obtaining the written permission of a Director of Orbit Solutions Pty Ltd.

VCAT Ref No: -

Site Address:  
**'JUNCTION OVAL'**  
**Lakeside Drive,**  
**St Kilda VIC 3182**

For:  
**CME Group Pty Ltd**

Section:  
**A04.04**  
**PHOTOMONTAGE 04**

Date Issued:  
7 April 2025

Project No:  
V24018

Revision:  
-