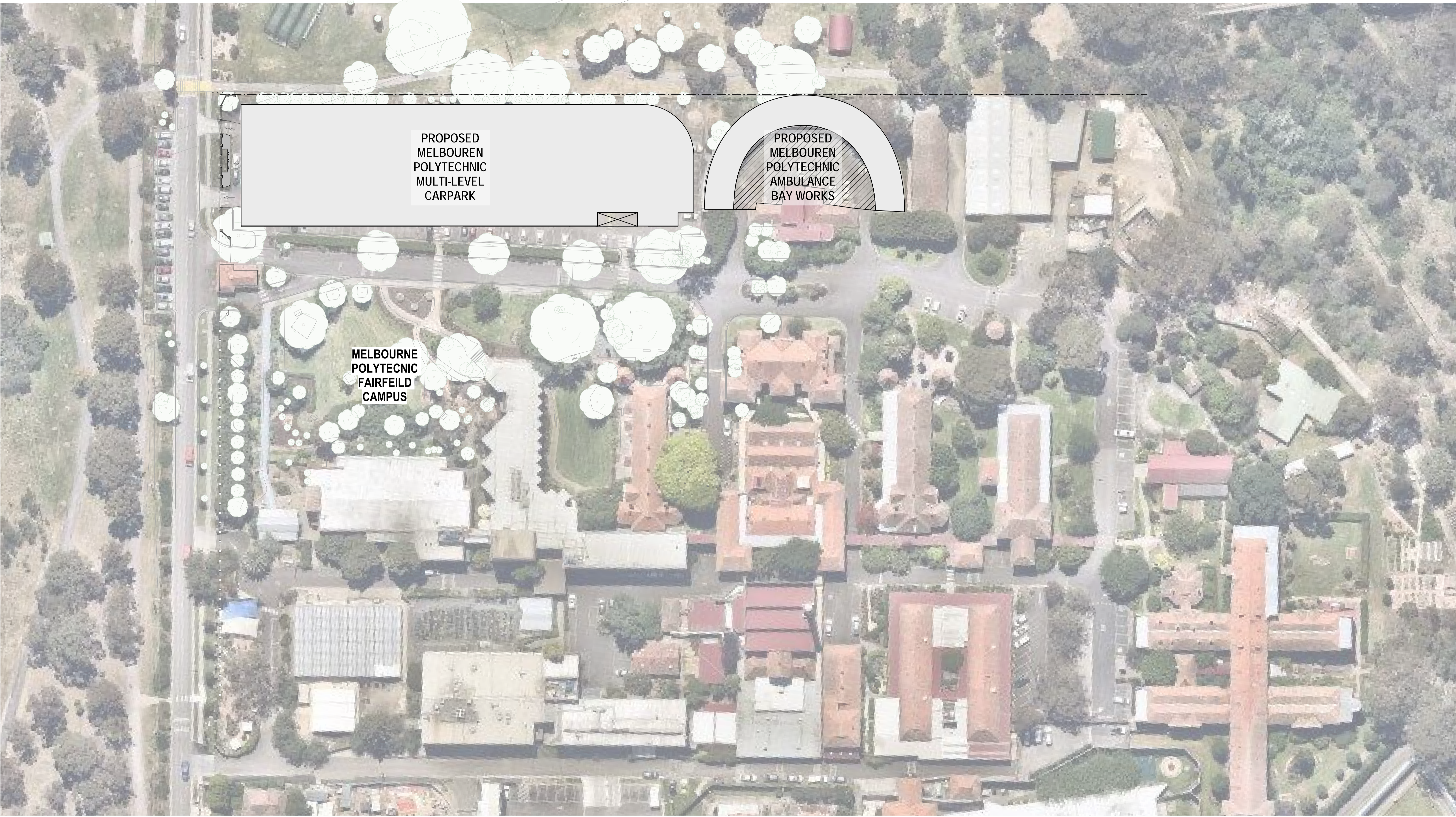


THOMAS EMBLING HOSPITAL EXPANSION

MULTI_DECK CARPARK (MELBOURNE POLYTECHNIC)

DRAWING LIST	
SHEET No.	SHEET NAME
GBA-DRW-AR-CP-000-0000-0000	COVER PAGE AND DRAWING LIST
GBA-DRW-AR-CP-010-0000-0000	CONTEXT PLAN - CARPARK
GBA-DRW-AR-CP-020-0000-0000	SHADOW DIAGRAMS
GBA-DRW-AR-CP-030-0001-0000	VIEWS - SHEET 1
GBA-DRW-AR-CP-030-0002-0000	VIEWS - SHEET 2
GBA-DRW-AR-CP-030-0003-0000	VIEWS - SHEET 3
GBA-DRW-AR-CP-030-0004-0000	VIEWS - SHEET 4
GBA-DRW-AR-CP-030-0005-0000	VIEWS - SHEET 5
GBA-DRW-AR-CP-050-0000-0000	EXISTING CONDITIONS - CARPARK
GBA-DRW-AR-CP-100-2000-0000	GROUND FLOOR PLAN
GBA-DRW-AR-CP-100-4100-0000	LEVEL 1 FLOOR PLAN
GBA-DRW-AR-CP-100-5200-0000	LEVEL 2 FLOOR PLAN
GBA-DRW-AR-CP-140-0001-0000	ROOF PLAN
GBA-DRW-AR-CP-200-0001-0000	ELEVATIONS - SHEET 1
GBA-DRW-AR-CP-200-0002-0000	ELEVATIONS - SHEET 2
GBA-DRW-AR-CP-200-0003-0000	ELEVATIONS - SHEET 3
GBA-DRW-AR-CP-300-0001-0000	SECTIONS - SHEET 1
GBA-DRW-AR-CP-300-0002-0000	SECTIONS - SHEET 2

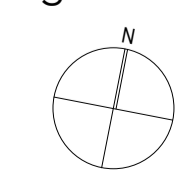


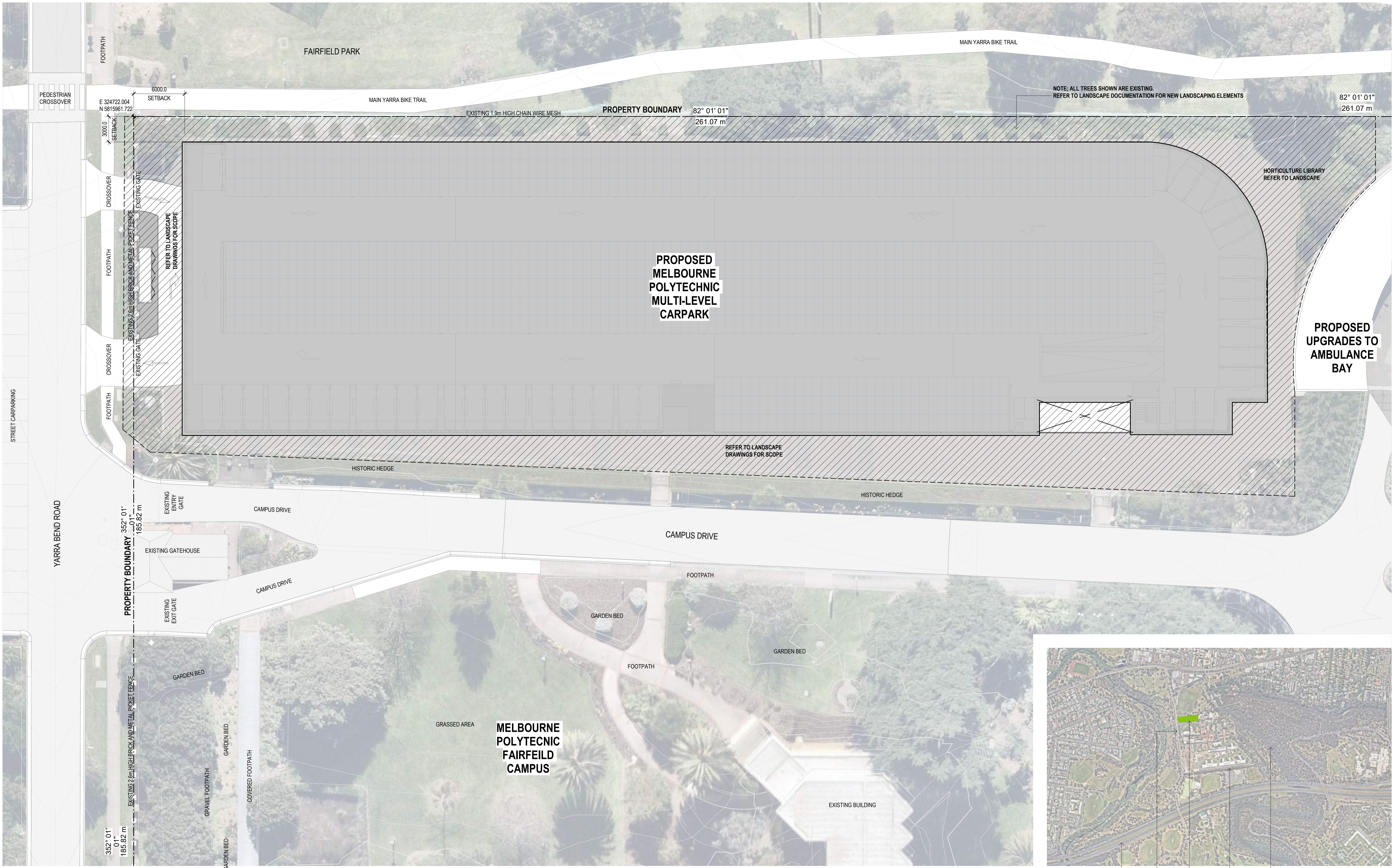


PROPOSED
MELBOURNE
POLYTECHNIC
MULTI-LEVEL
CARPARK

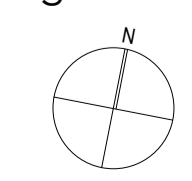
PROPOSED
MELBOURNE
POLYTECHNIC
AMBULANCE
BAY WORKS

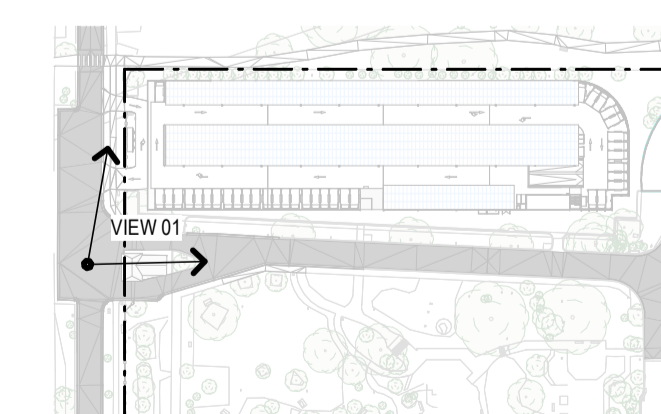
MELBOURNE
POLYTECHNIC
FAIRFIELD
CAMPUS



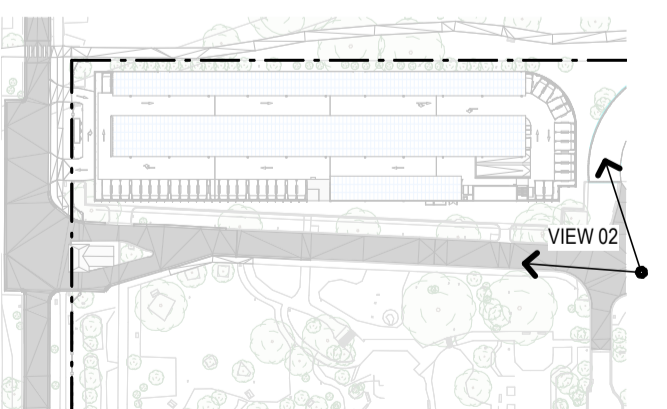


1 CONTEXT PLAN - CARPARK
1:200

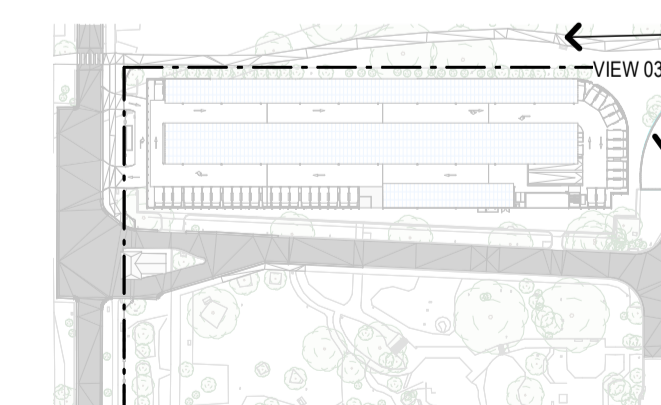




VIEW 01



VIEW 02



VIEW 03

GUYMER | BAILEY architects



Guymer Bailey Architects Melbourne Studio
 Level 5 / 969 Burke Road, Camberwell VIC 3124
 T. 03 8547 5000
 Guymer Bailey Architects Brisbane Studio
 19 Terrace Street, Toowong QLD 4066
 T. 07 3870 9700

Medical Architecture Australasia Pacific
 Suite 6, Level 1, 2-12 Foveaux Street,
 Surry Hills NSW 2010
 T. 02 9380 2625



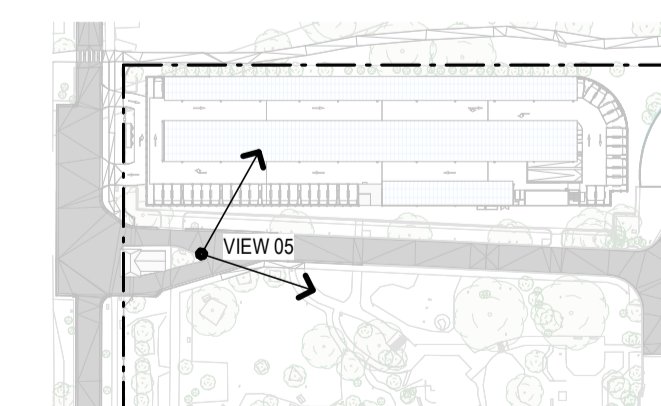
Client: VICTORIAN HEALTH BUILDING AUTHORITY
 Project: THOMAS EMBLING HOSPITAL EXPANSION
 Drawing: VIEWS - SHEET 3
 Scale: 1 : 2000@A1

Project No.: 2664
 Date: 20/02/24
 Stage-Drawing: Schematic Design
 Rev: C

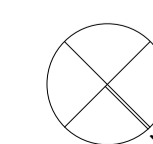
GBA-DRW-AR-CP-030-0003-0000

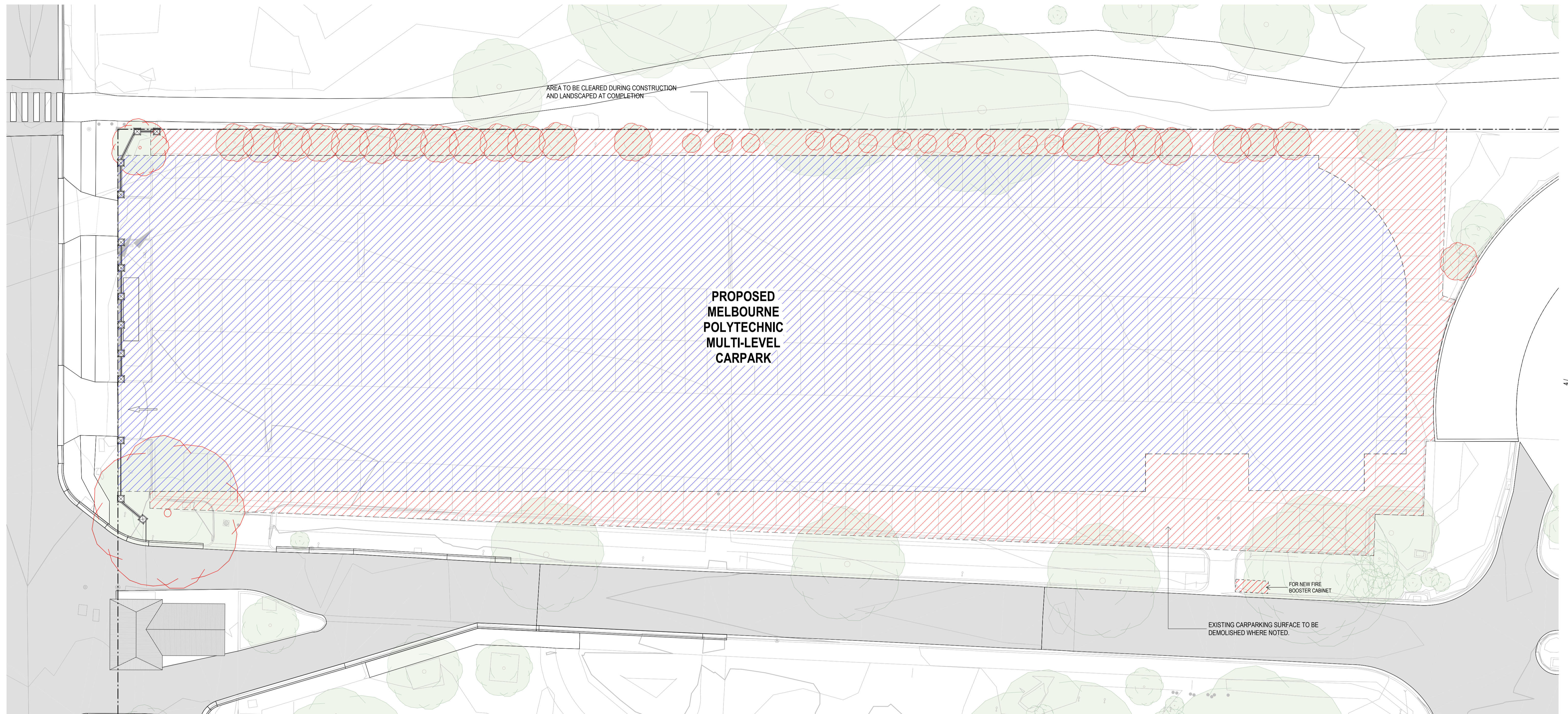
FILENAME: BM 302/054 - THOMAS EMBLING HOSPITAL/TEHLAR_CP_BUILDING.rvt

PRINT/SAVE DATE: 26/02/2024 11:27:01 AM



VIEW 05

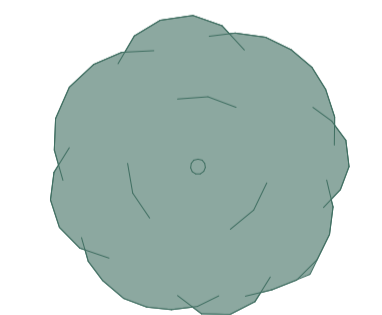




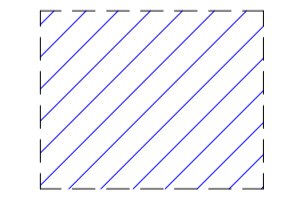
GBA-DRW-AR-CP-050-0000-0000

1 EXISTING CONDITIONS - CARPARK
1:200

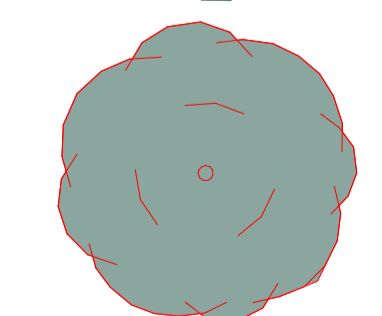
NOTE: REFER TO SITE SURVEY DRAWING FOR DETAIL OF EXISTING CONDITIONS



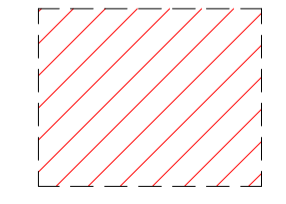
EXISTING TREE TO BE PROTECTED (TPZ) & (SRZ)
REFER TO ARBORIST REPORT FOR DETAIL ON TPZ AND SRZ.



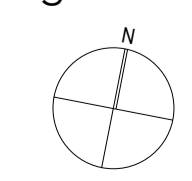
EXISTING MELBOURNE POLYTECHNIC CARPARK SURFACE TO BE MADE GOOD AS GROUND FLOOR CARPARK SURFACE

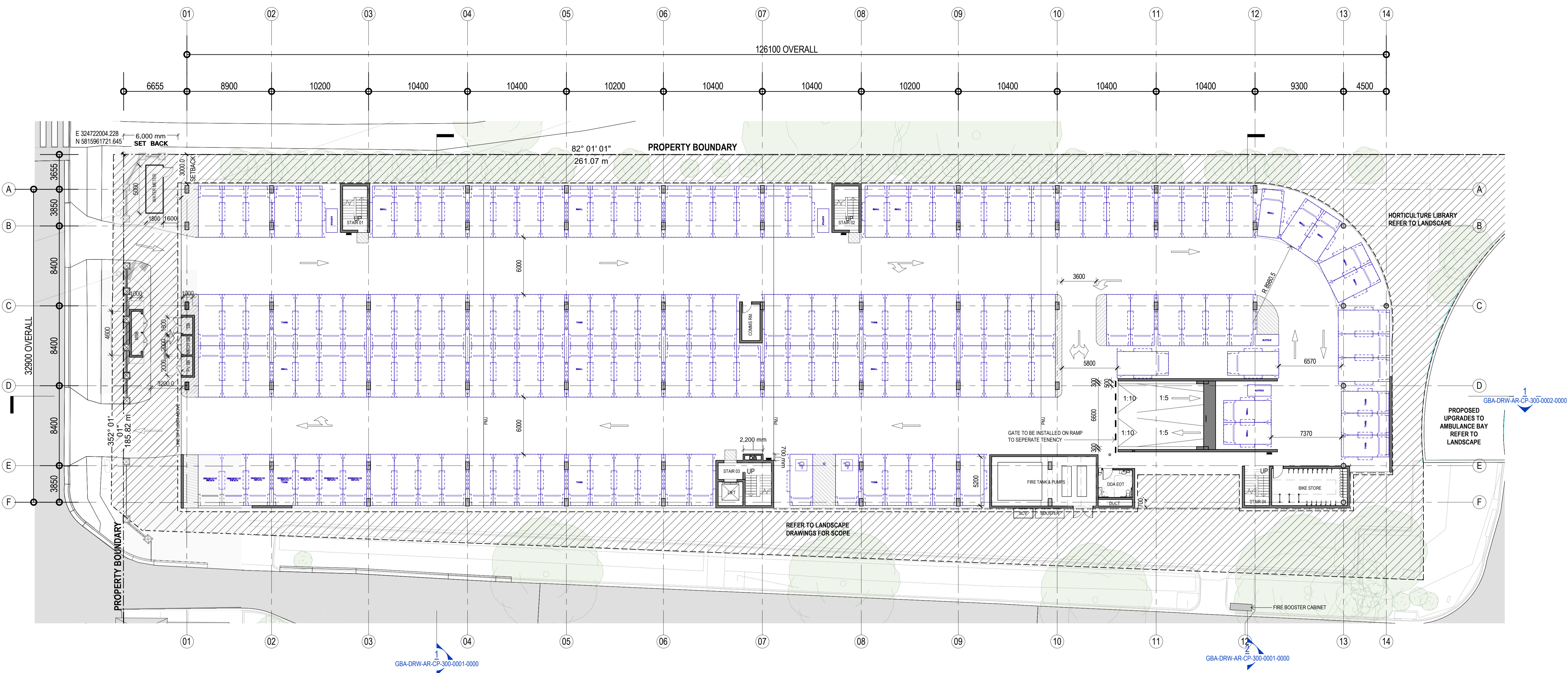


TREE TO BE DEMOLISHED



DEMOLITION OF GROUND SURFACE





CARPARKING - MP	
Description	Count
GROUND	
AS 2890.1 Small Car Bay	10
AS 2890.1 Small Car Bay 2.3 x 5.4	13
AS 2890.1 DDA Carpark Bay	2
AS 2890.1 Carpark Bay 2.5 x 5.4	132
Grand total:	157
LEVEL 1	
AS 2890.1 Small Car Bay	7
AS 2890.1 Carpark Bay 2.4 x 5.4	12
Grand total:	19
Grand total:	176

MOTORCYCLE PARKING - MP	
Description	Count
GROUND	
AS 2890.1 Motorcycle Bay	4
LEVEL 1	
AS 2890.1 Motorcycle Bay	3
Grand total:	7

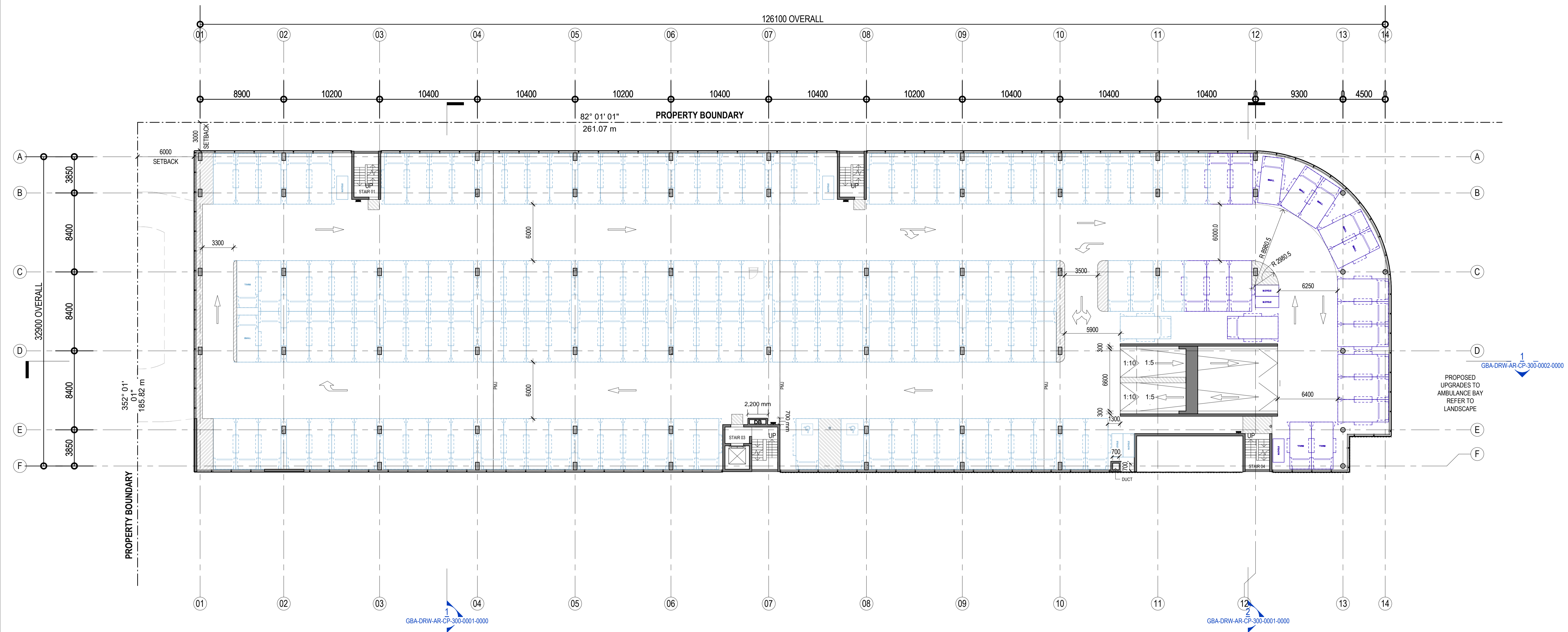
CARPARKING - FC	
Description	Count
LEVEL 1	
AS 2890.1 Small Car Bay	2
AS 2890.1 Carpark Bay 2.4 x 5.4	138
AS 2890.1 DDA Carpark Bay	2
LEVEL 2	
AS 2890.1 Small Car Bay	9
AS 2890.1 Small Car Bay 2.3 x 5.4	2
AS 2890.1 Carpark Bay 2.4 x 5.4	150
AS 2890.1 DDA Carpark Bay	2
Grand total:	163
Grand total:	305

MOTORCYCLE PARKING - FC	
Description	Count
LEVEL 1	
AS 2890.1 Motorcycle Bay	4
LEVEL 2	
AS 2890.1 Motorcycle Bay	8
Grand total:	12

BIKE STORE	
Description	Count
Wall Mounted Bike Rack	17
Floor Mounted E-Bike Rack	3
2 Tier Lockers	10

LEGEND:

- MELBOURNE POLYTECHNIC PARKING BAY
- FORENSICARE PARKING BAY
- LOCATION OF SOLAR STRUCTURAL SUPPORT FRAME



CARPARKING - MP	
Description	Count
GROUND	
AS 2890.1 Small Car Bay	10
AS 2890.1 Small Car Bay 2.3 x 5.4	13
AS 2890.1 DDA Carpark Bay	2
AS 2890.1 Carpark Bay 2.5 x 5.4	132
Grand total:	157
LEVEL 1	
AS 2890.1 Small Car Bay	7
AS 2890.1 Carpark Bay 2.4 x 5.4	12
Grand total:	176

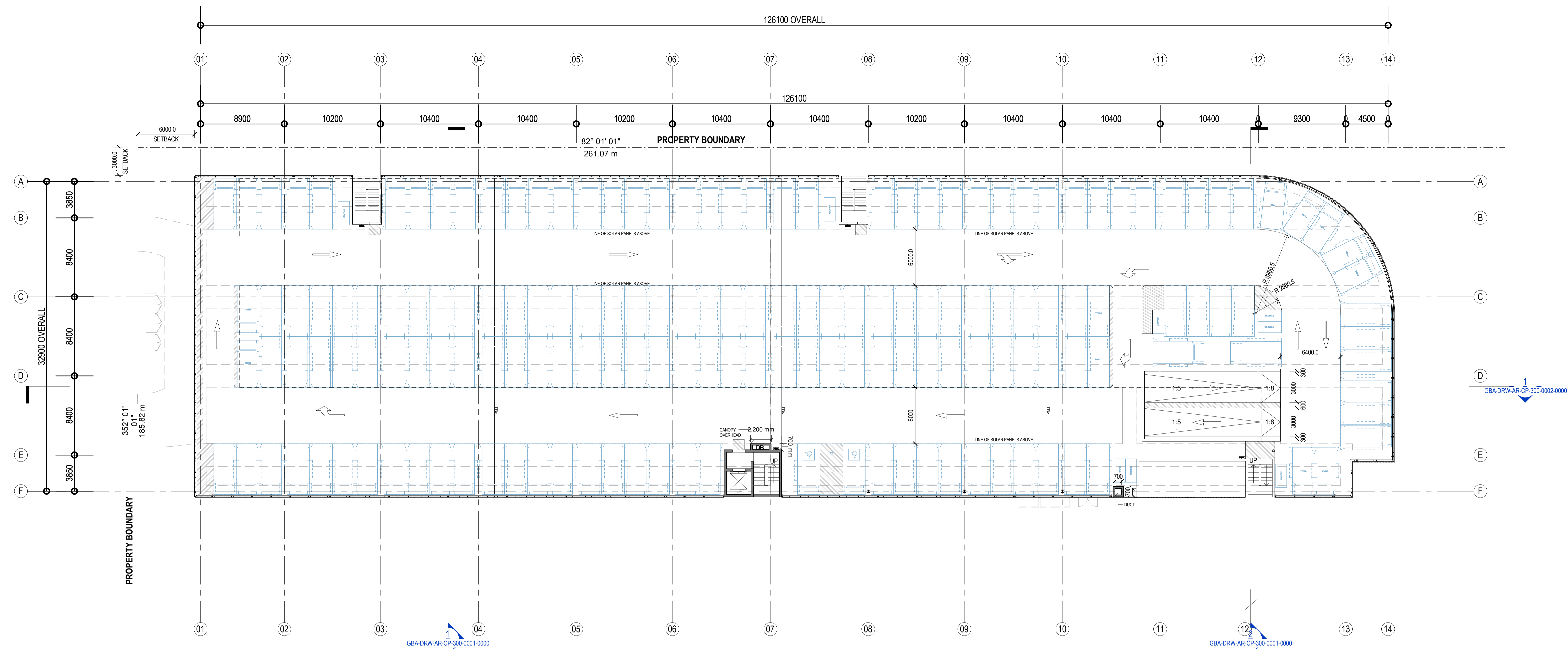
MOTORCYCLE PARKING - MP	
Description	Count
GROUND	
AS 2890.1 Motorcycle Bay	4
LEVEL 1	
AS 2890.1 Motorcycle Bay	3
Grand total:	7

CARPARKING - FC	
Description	Count
LEVEL 1	
AS 2890.1 Small Car Bay	2
AS 2890.1 Carpark Bay 2.4 x 5.4	138
AS 2890.1 DDA Carpark Bay	2
LEVEL 2	
AS 2890.1 Small Car Bay	9
AS 2890.1 Small Car Bay 2.3 x 5.4	2
AS 2890.1 Carpark Bay 2.4 x 5.4	150
AS 2890.1 DDA Carpark Bay	2
Grand total:	305

MOTORCYCLE PARKING - FC	
Description	Count
LEVEL 1	
AS 2890.1 Motorcycle Bay	4
LEVEL 2	
AS 2890.1 Motorcycle Bay	8
Grand total:	12

LEGEND:

- MELBOURNE POLYTECHNIC PARKING BAY
- FORENSICARE PARKING BAY
- LOCATION OF SOLAR STRUCTURAL SUPPORT FRAME



CARPARKING - MP	
Description	Count
GROUND	
AS 2890.1 Small Car Bay	10
AS 2890.1 Small Car Bay 2.3 x 5.4	13
AS 2890.1 DDA Carpark Bay	2
AS 2890.1 Carpark Bay 2.5 x 5.4	132
Grand total:	157
LEVEL 1	
AS 2890.1 Small Car Bay	7
AS 2890.1 Carpark Bay 2.4 x 5.4	12
Grand total:	176

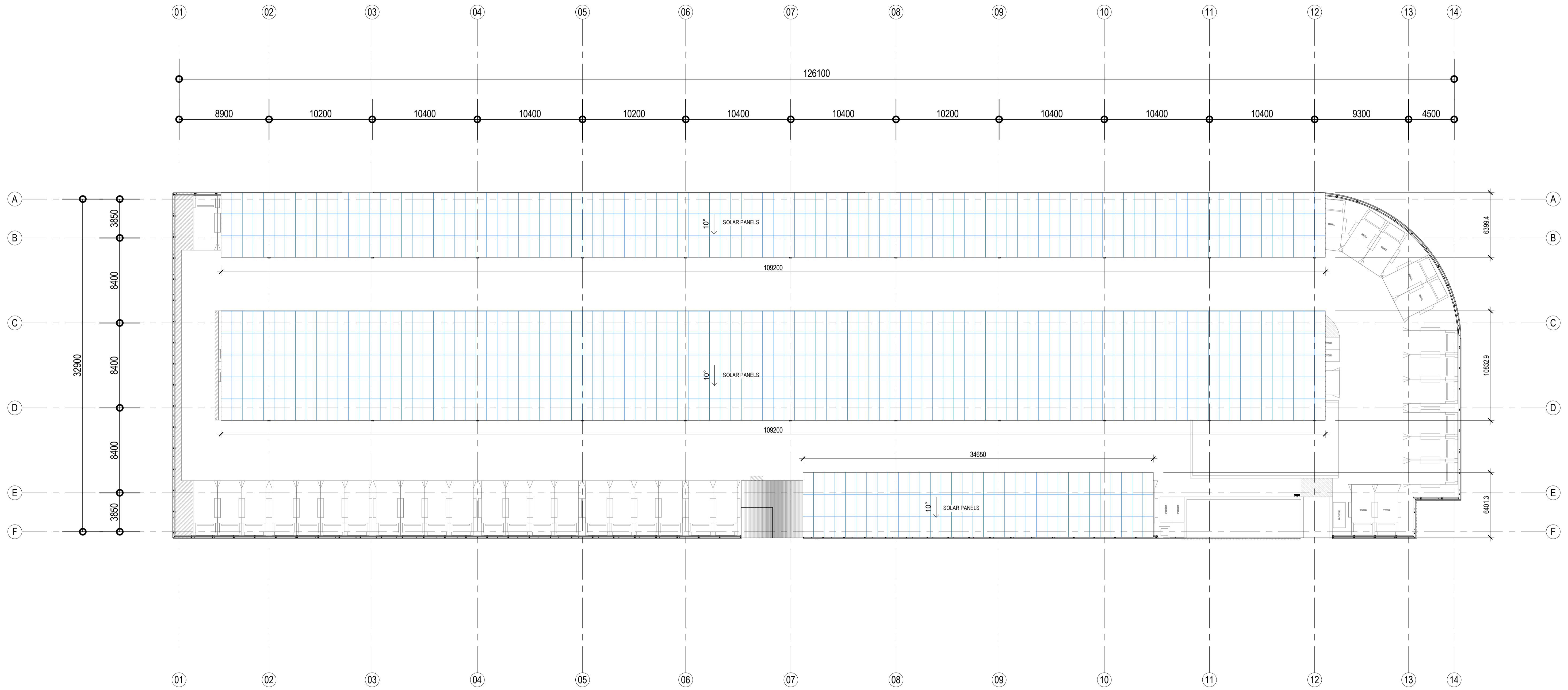
MOTORCYCLE PARKING - MP	
Description	Count
GROUND	
AS 2890.1 Motorcycle Bay	4
LEVEL 1	
AS 2890.1 Motorcycle Bay	3
Grand total:	7

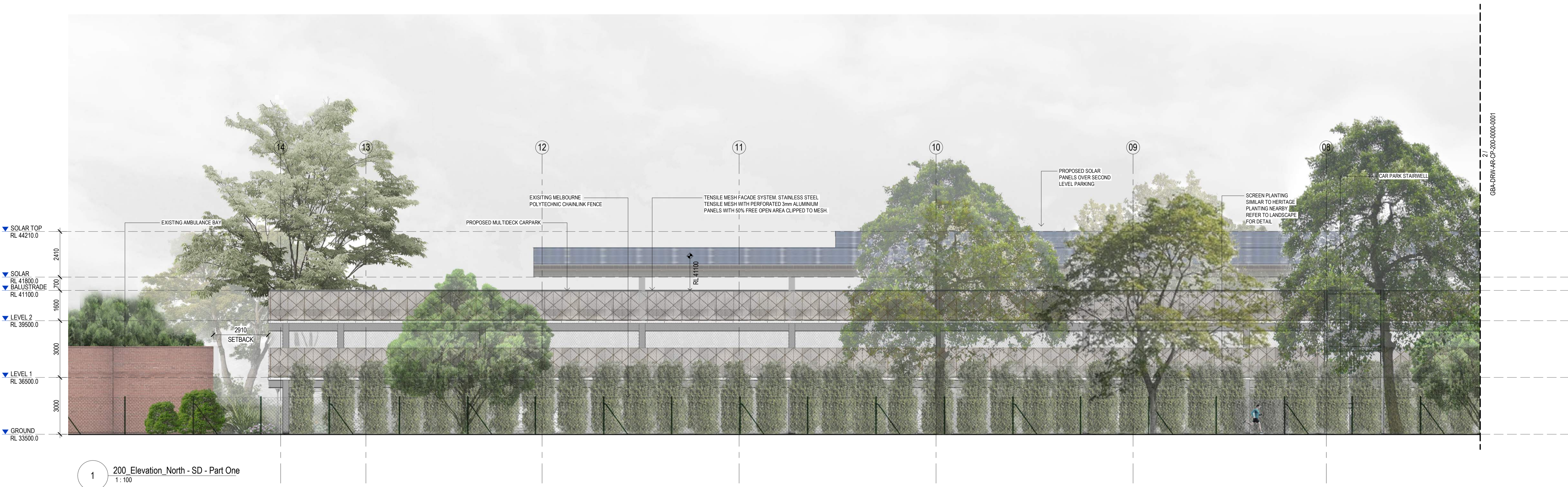
CARPARKING - FC	
Description	Count
LEVEL 1	
AS 2890.1 Small Car Bay	2
AS 2890.1 Carpark Bay 2.4 x 5.4	138
AS 2890.1 DDA Carpark Bay	2
LEVEL 2	
AS 2890.1 Small Car Bay	9
AS 2890.1 Small Car Bay 2.3 x 5.4	2
AS 2890.1 Carpark Bay 2.4 x 5.4	150
AS 2890.1 DDA Carpark Bay	2
Grand total:	305

MOTORCYCLE PARKING - FC	
Description	Count
LEVEL 1	
AS 2890.1 Motorcycle Bay	4
LEVEL 2	
AS 2890.1 Motorcycle Bay	8
Grand total:	12

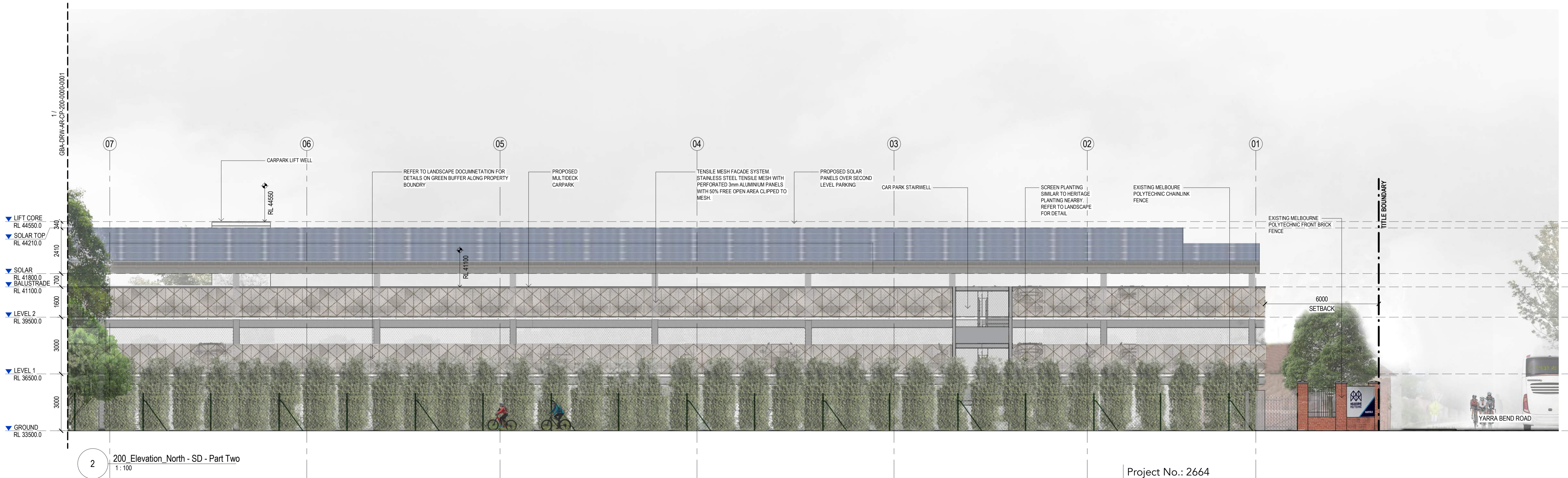
LEGEND:

- MELBOURNE POLYTECHNIC PARKING BAY
- FORENSICARE PARKING BAY
- LOCATION OF SOLAR STRUCTURAL SUPPORT FRAME

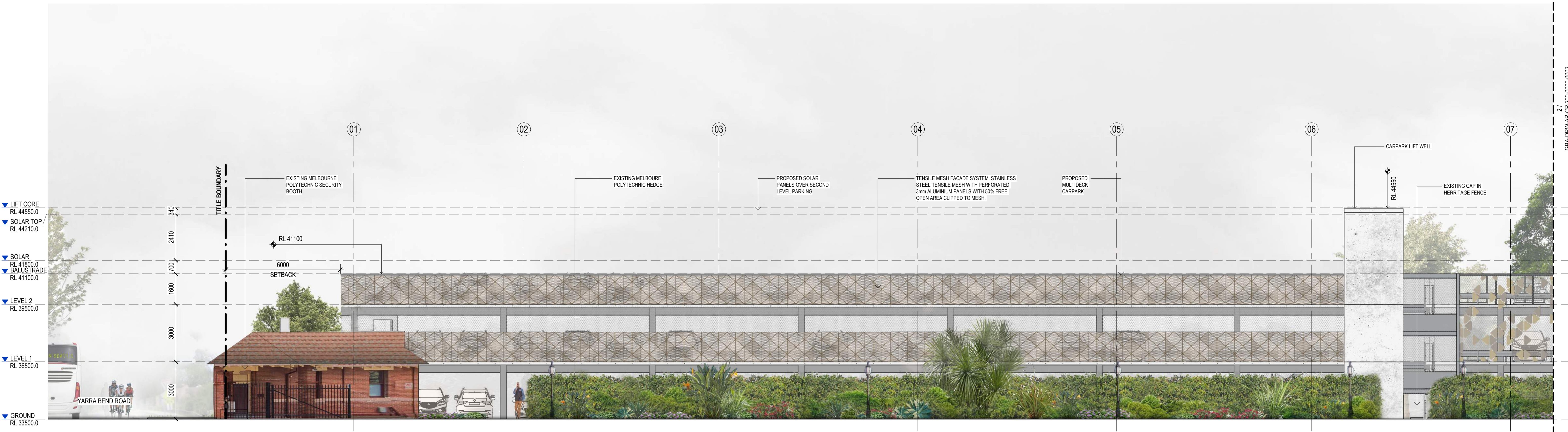




1 200_Elevation_North - SD - Part One
1:100



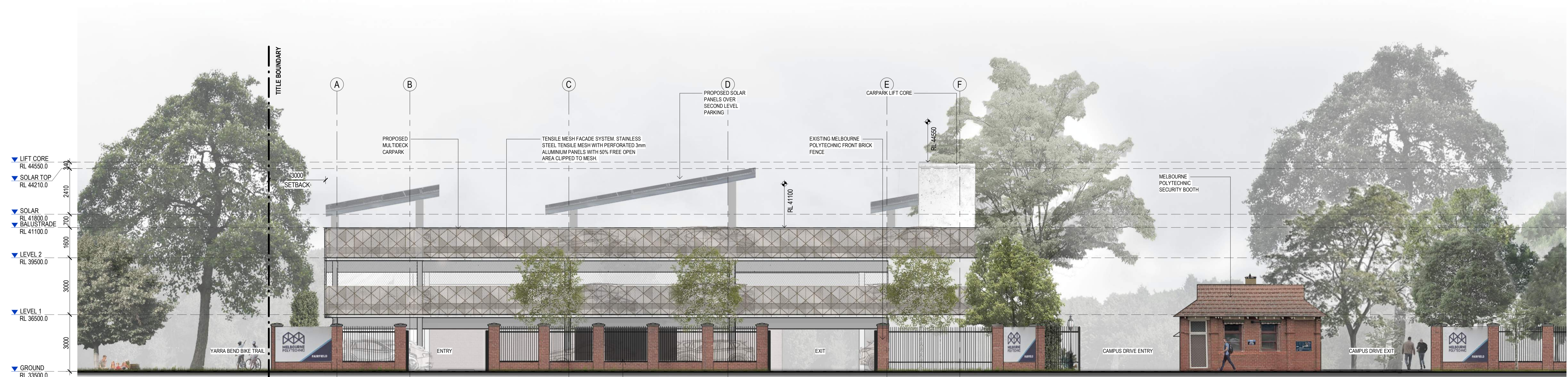
2 200_Elevation_North - SD - Part Two
1:100



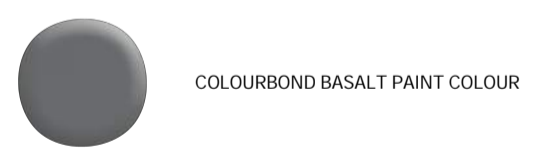
1 200_Elevation_South - SD - Part One
1:100



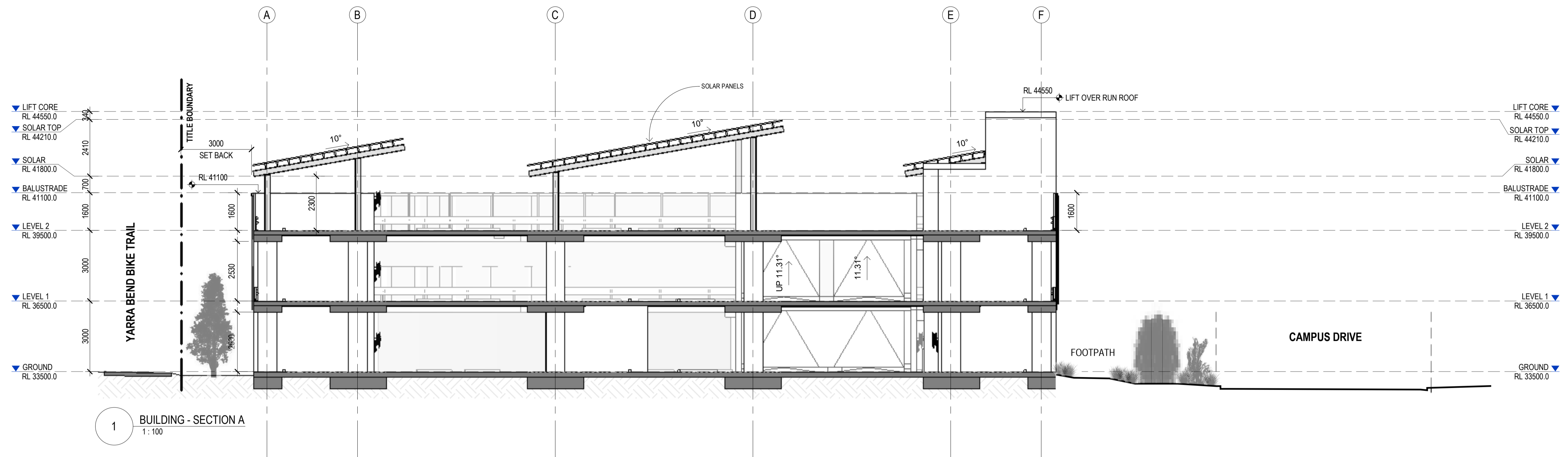
2 200_Elevation_South - SD - Part Two
1:100



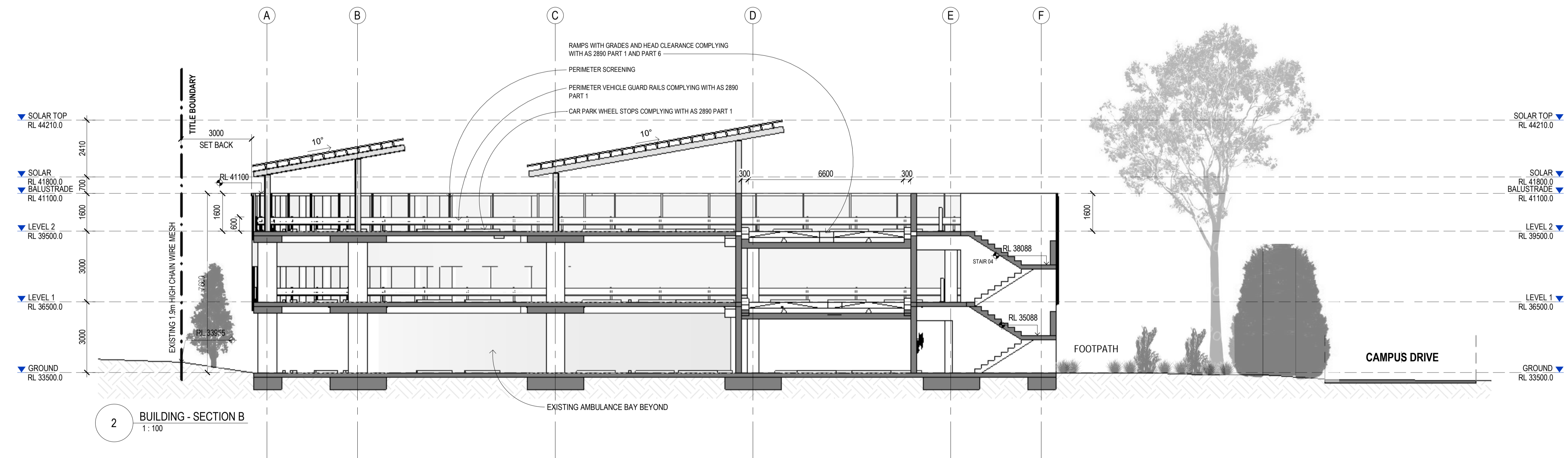
1 200_Elevation_West - SD
1:100



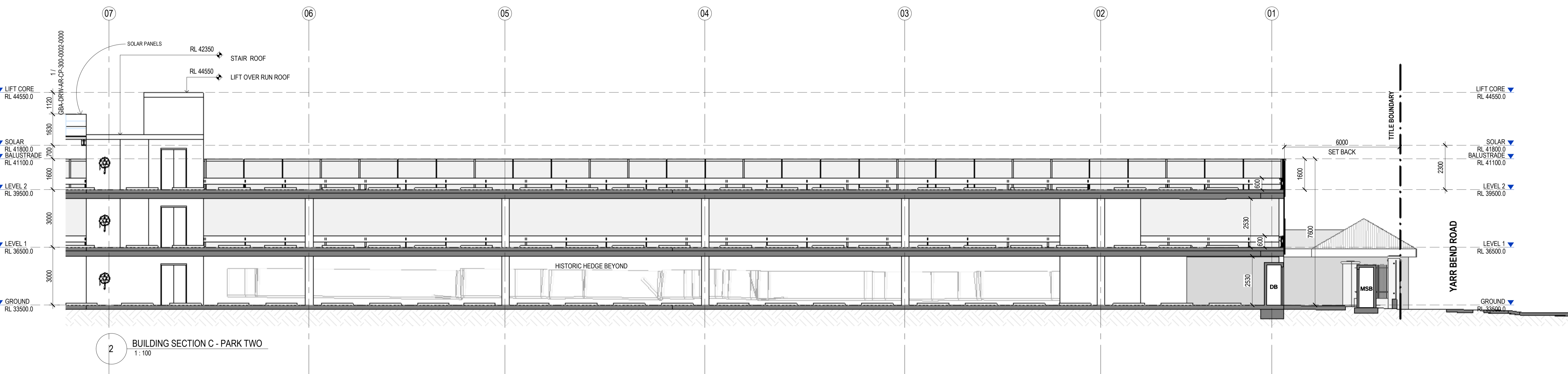
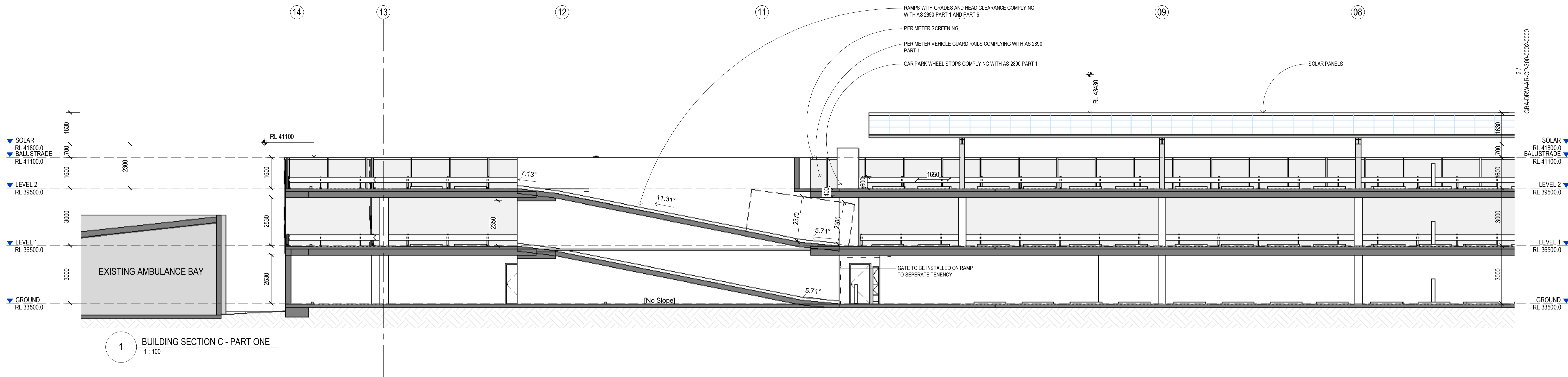
COLOURBOND BASALT PAINT COLOUR

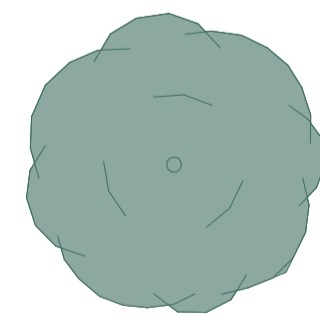
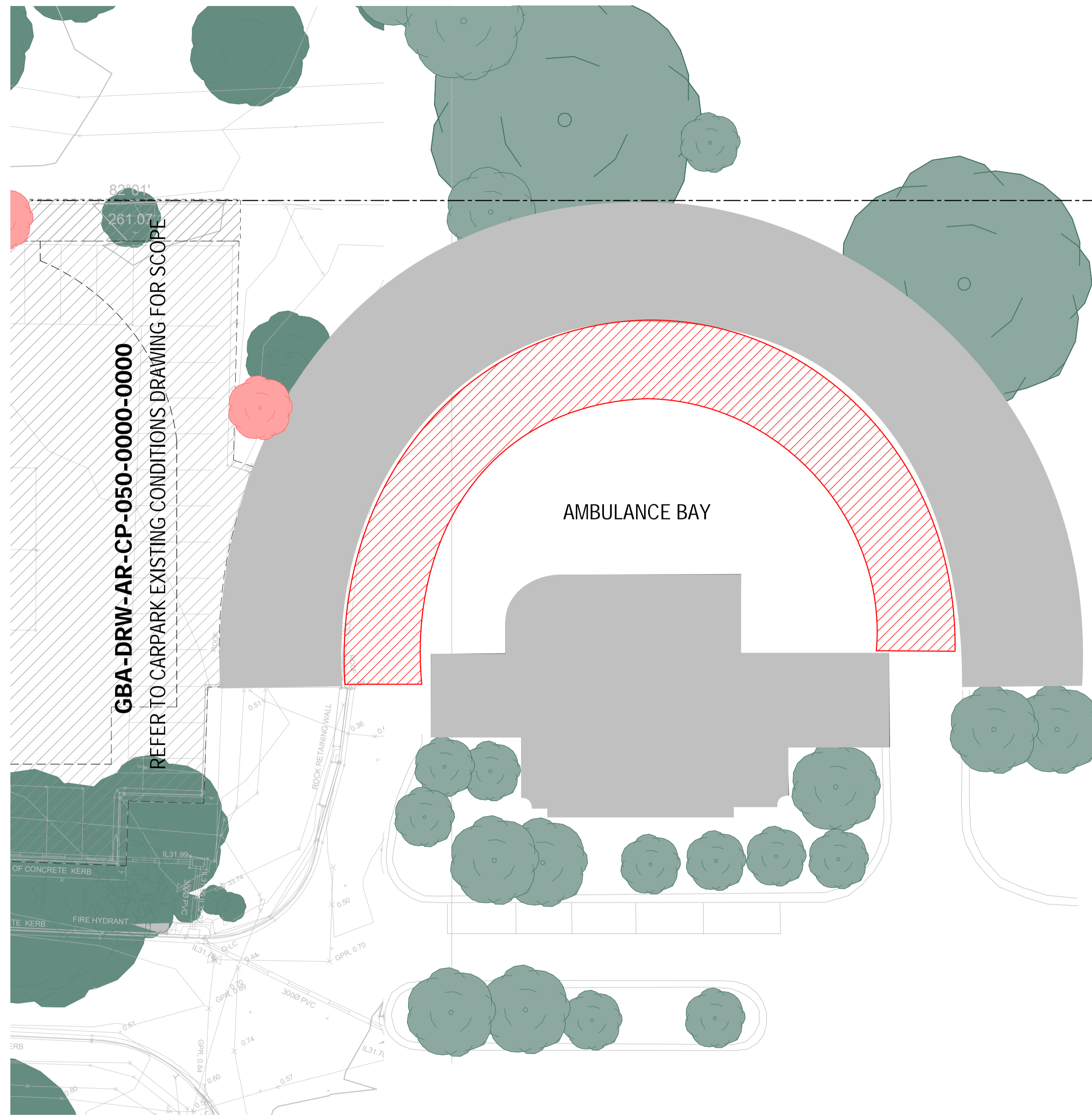


1 BUILDING - SECTION A
1:100



2 BUILDING - SECTION B
1:100

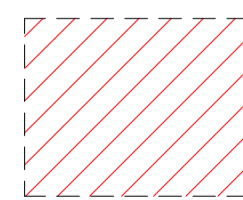




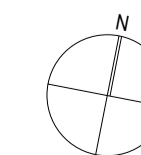
EXISTING TREE TO BE PROTECTED (TPZ) & (SRZ)

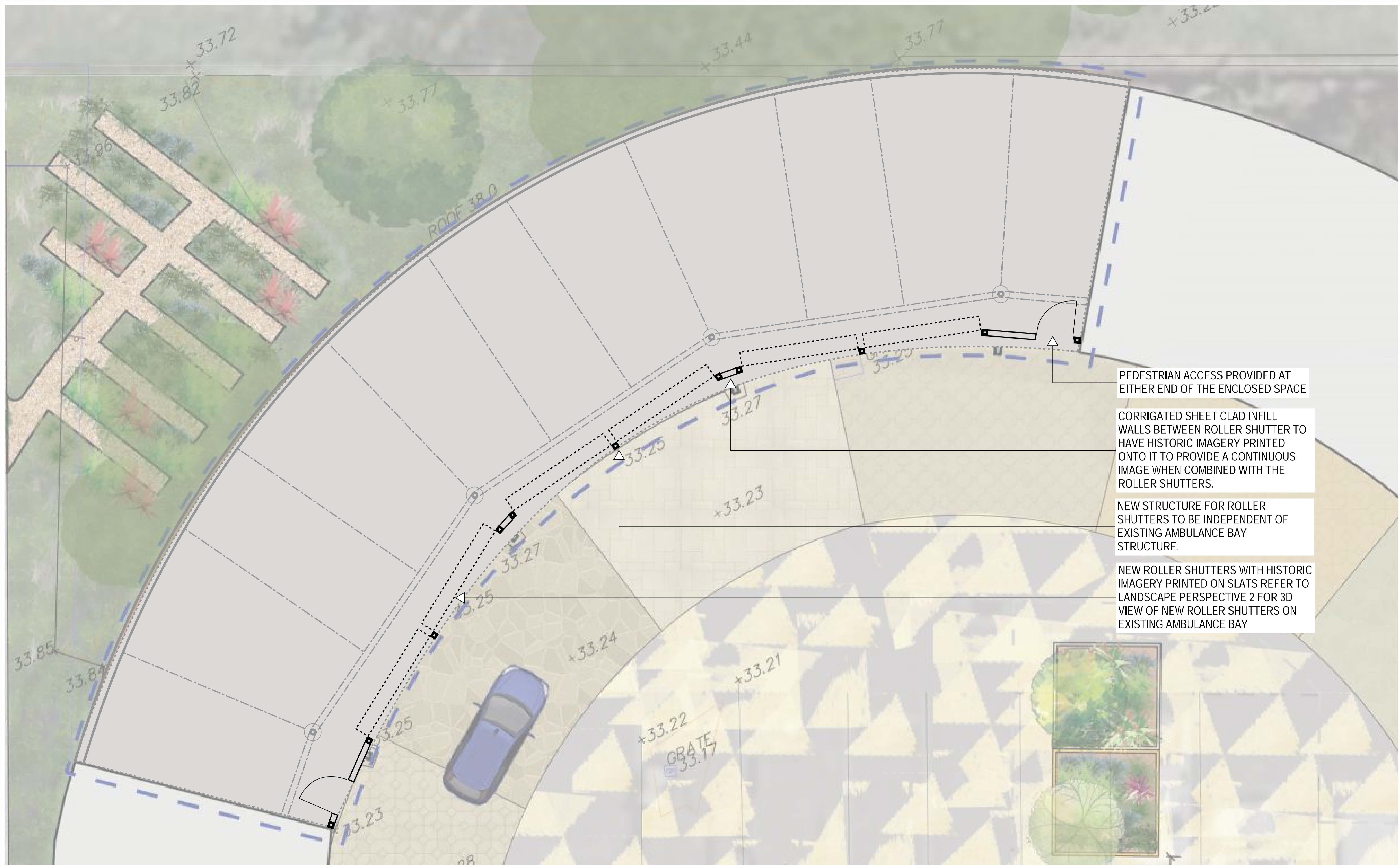
NOTE: REFER TO SITE SURVEY DRAWING FOR DETAIL OF EXISTING CONDITIONS

ALL EXISTING TREES ARE TO BE PROTECTED WITH APPROPRIATE TREE PROTECTION ZONE (TPZ) AND STRUCTURAL ROOT ZONE (SRZ). REFER TO ARBORIST REPORT FOR DETAIL AND CALCULATIONS.



DEMOLISH EXISTING CARPARK



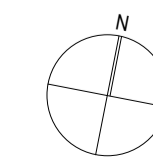


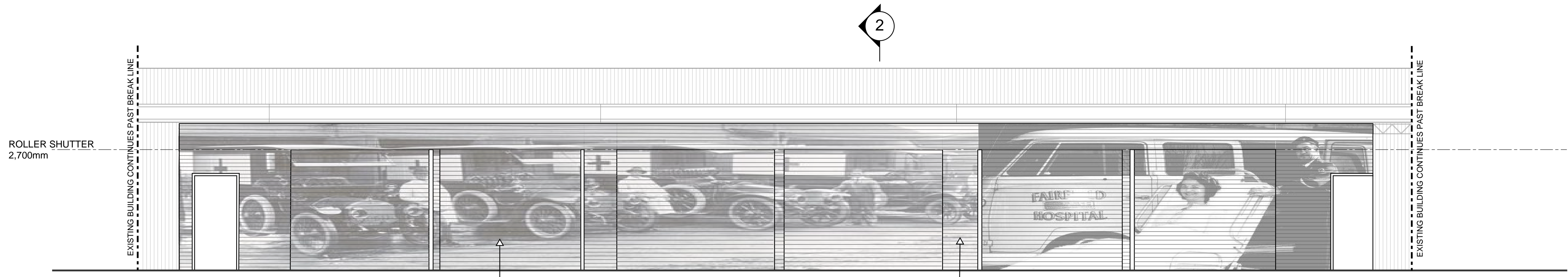
PEDESTRIAN ACCESS PROVIDED AT EITHER END OF THE ENCLOSED SPACE

CORRIGATED SHEET CLAD INFILL WALLS BETWEEN ROLLER SHUTTER TO HAVE HISTORIC IMAGERY PRINTED ONTO IT TO PROVIDE A CONTINUOUS IMAGE WHEN COMBINED WITH THE ROLLER SHUTTERS.

NEW STRUCTURE FOR ROLLER SHUTTERS TO BE INDEPENDENT OF EXISTING AMBULANCE BAY STRUCTURE.

NEW ROLLER SHUTTERS WITH HISTORIC IMAGERY PRINTED ON SLATS REFER TO LANDSCAPE PERSPECTIVE 2 FOR 3D VIEW OF NEW ROLLER SHUTTERS ON EXISTING AMBULANCE BAY

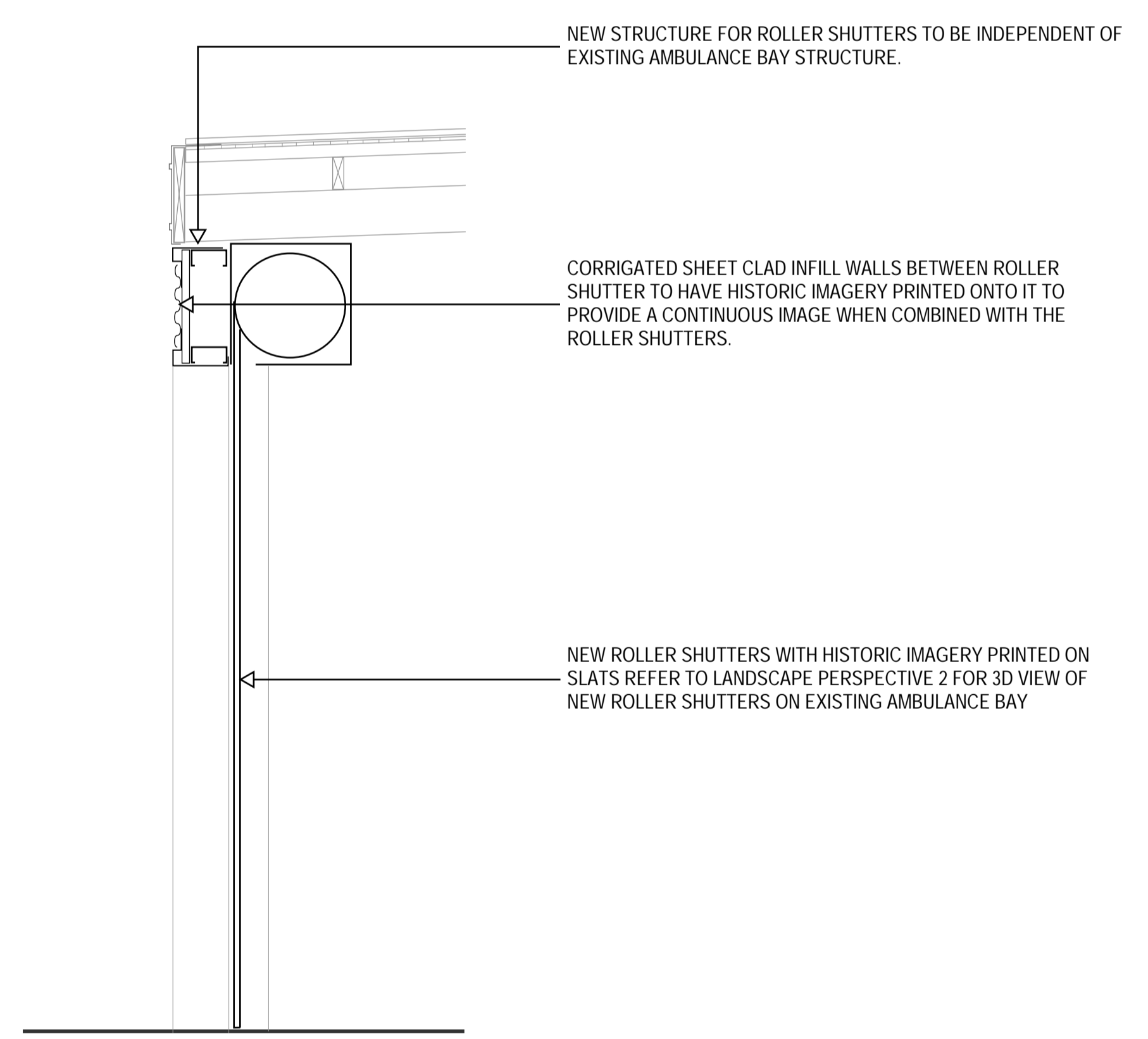




1 **AMBULANCE BAY ROLLER SHUTTERS ELEVATION**
 PARTS OF ELEVATION SEEN OBLIQUELY
 IMAGES ON ROLLER SHUTTER ARE PLACE HOLDERS TO BE RESOLVED THROUGH DESIGN CONSULTANTION WITH ALL STAKEHOLDERS

NEW ROLLER SHUTTERS WITH HISTORIC IMAGERY PRINTED ON SLATS REFER TO LANDSCAPE PERSPECTIVE 2 FOR 3D VIEW OF NEW ROLLER SHUTTERS ON EXISTING AMBULANCE BAY

CORRIGATED SHEET CLAD INFILL WALLS BETWEEN ROLLER SHUTTER TO HAVE HISTORIC IMAGERY PRINTED ONTO IT TO PROVIDE A CONTINUOUS IMAGE WHEN COMBINED WITH THE ROLLER SHUTTERS.



2 **AMBULANCE BAY ROLLER SHUTTER SECTION**

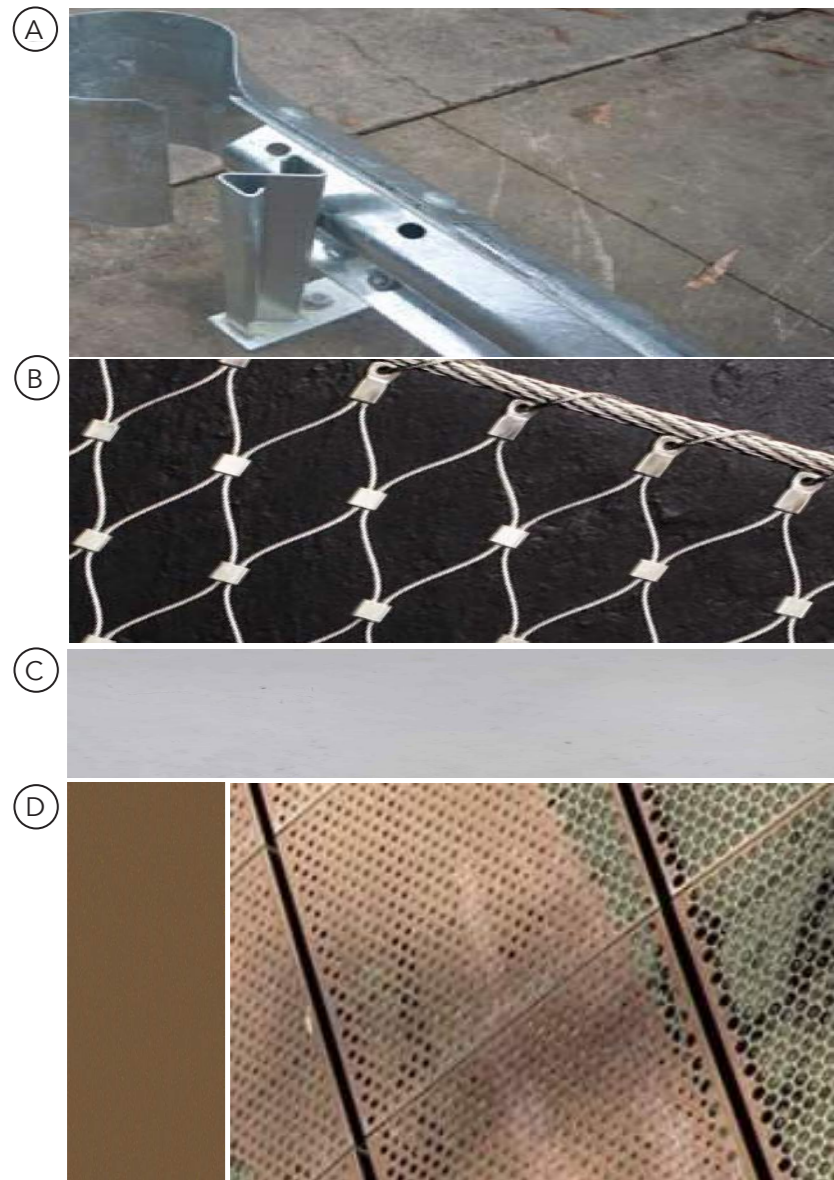


THOMAS EMBLING HOSPITAL & MELBOURNE POLYTECHNIC

Multideck Carpark - Materials and Finishes report

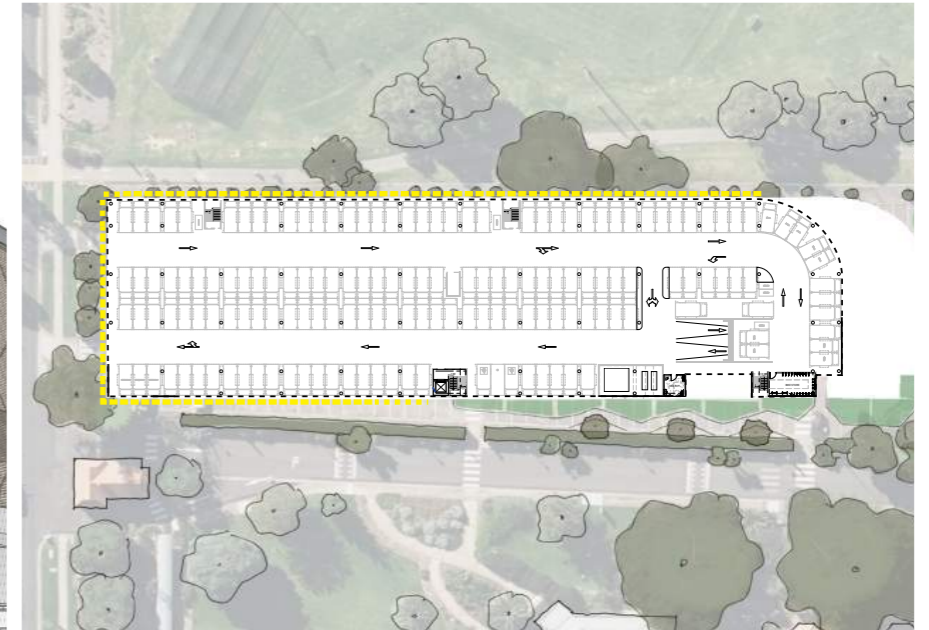
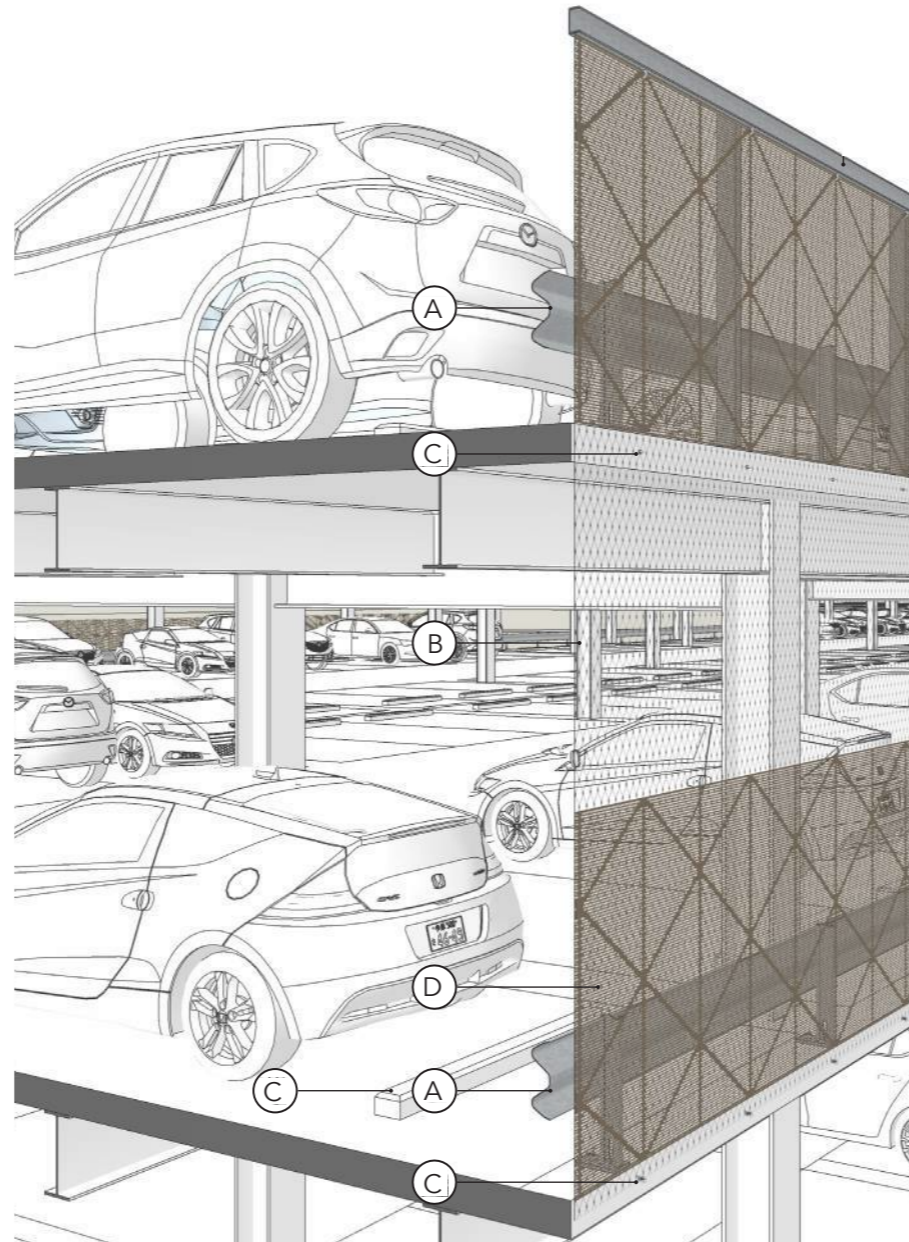
November 2023

Legend:



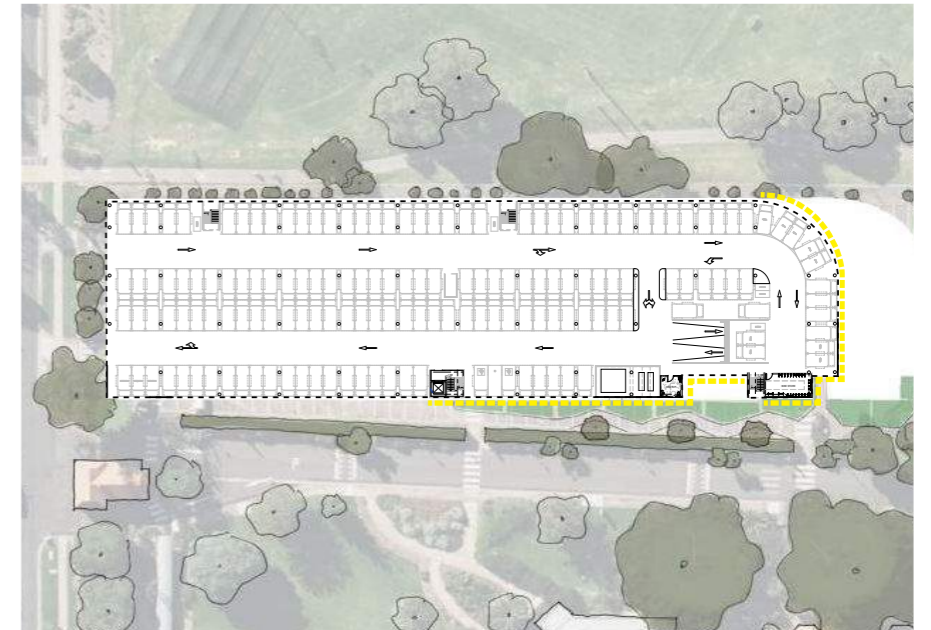
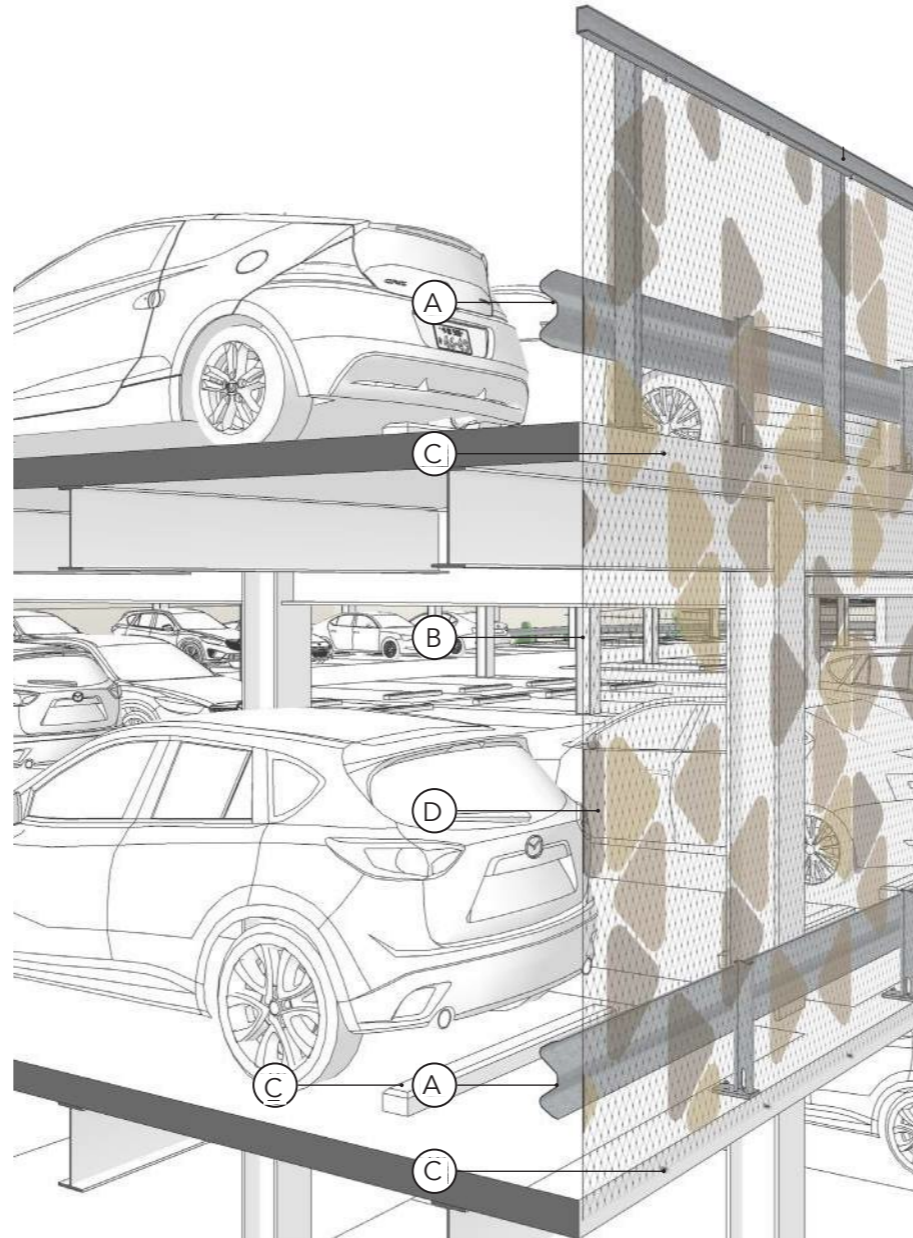
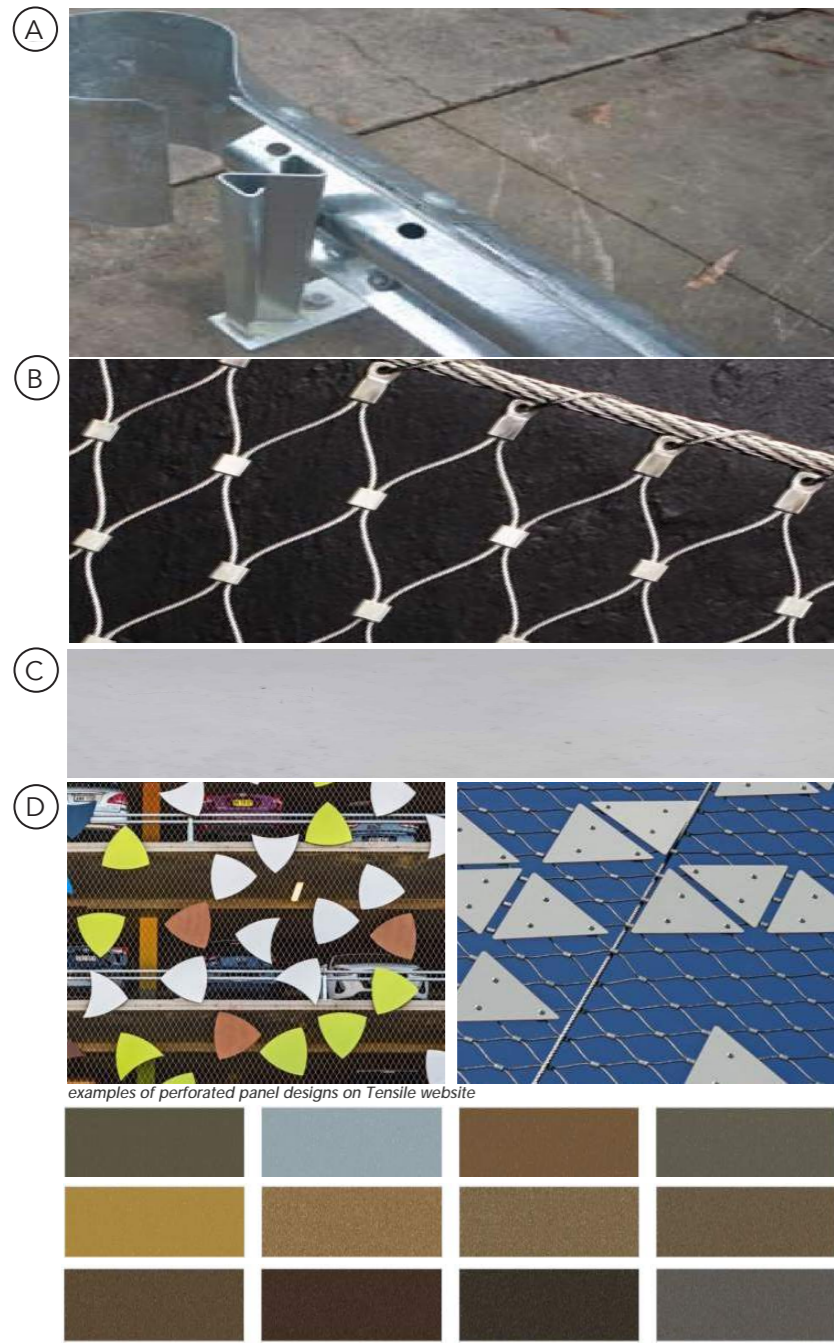
dulux electro - New Copper Kinetic

example of perforated panel in copper metal



- (A) Galvanised steel carpark crash barrier
- (B) Stainless steel tensile mesh with nom. 100mm apertures and 2mm gauge wire
- (C) Off form concrete
- (D) Triangular perforated 3mm aluminium panels clipped to tensile mesh (min. 50% free open area) - Dulux Electro powdercoat finish (New Copper Kinetic)

Legend:

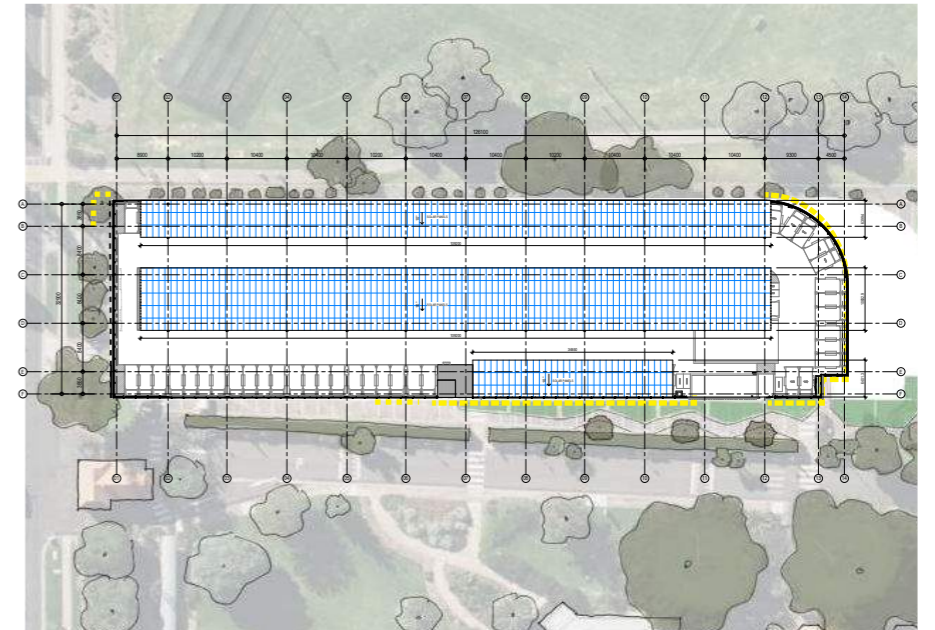
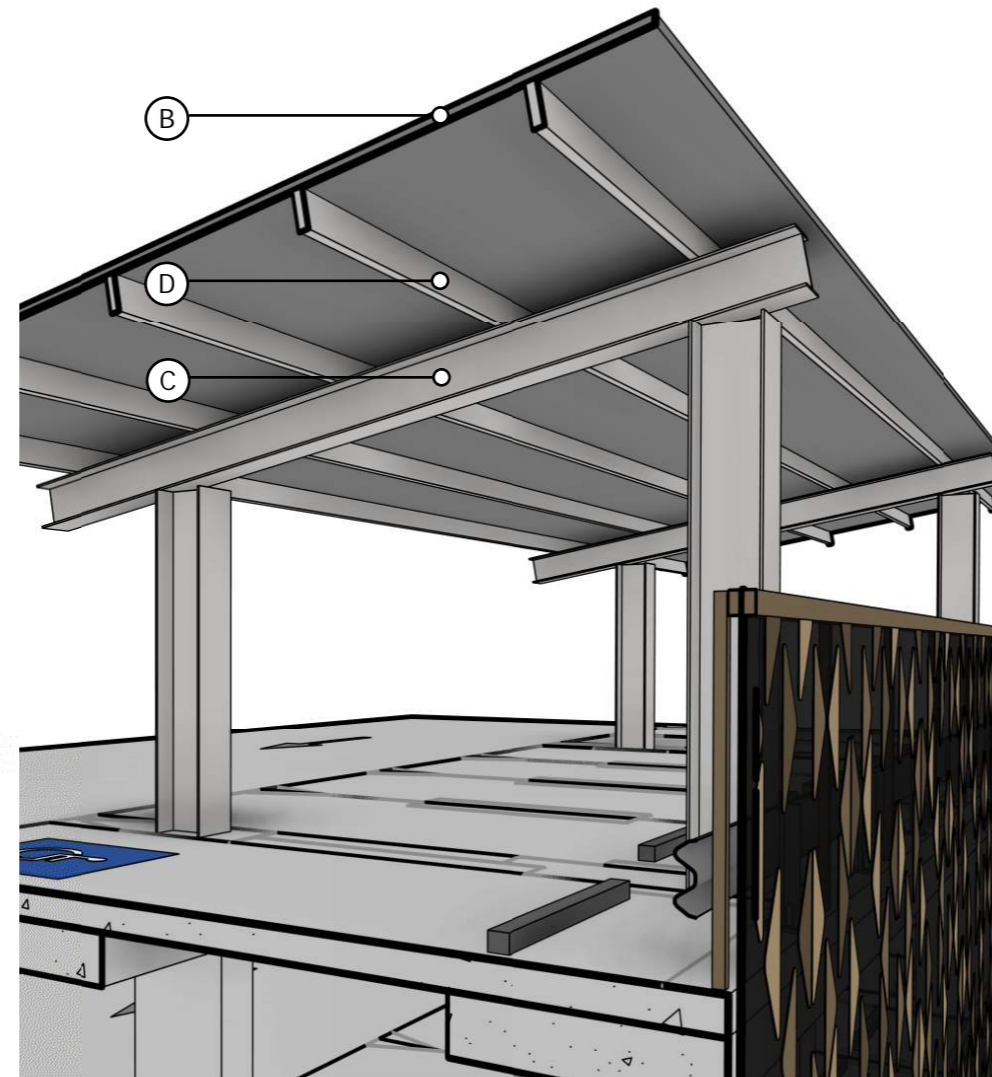
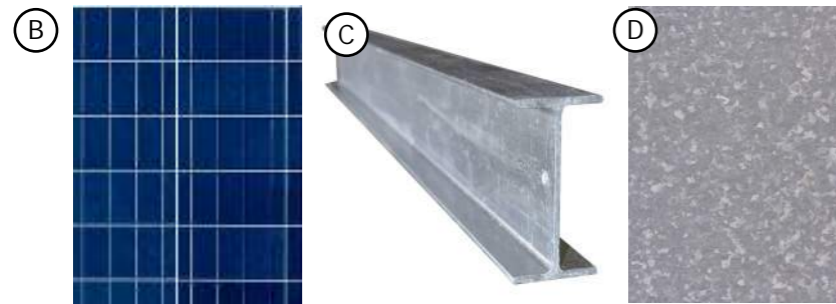


- (A) Galvanised steel carpark crash barrier
- (B) Stainless steel tensile mesh with nom. 100mm apertures and 2mm gauge wire
- (C) Off form concrete
- (D) 3mm aluminium panels clipped to tensile mesh. Location open for rotating student artwork design on removable clips - future instillation by Melbourne Polytechnic. Examples of the system shown.

Sketches

Typical Solar Panel Structure Above Level Two

Legend:



- (A) Photovoltaic (PV) cells to be installed as per manufacture specification with 2300mm clearance and 10 degree fall to gutter.
- (B) Photovoltaic (PV) cells
- (C) Galvanised Universal Columns to support solar structure.
- (D) Galvanised Universal purlins to support solar structure.
- (E) Example of similar Solar Array to the proposed PV system for the Muiltdeck car park at Melbourne Polytechnic Fairfield campus.