



Figure 21 Oblique aerial view of the Exhibition Buildings and Carlton Gardens seen from the north, 1949, at the time of construction of the temporary accommodation huts for the Migrant Reception Centre use.

Source: Reproduced from *Carlton Gardens: Tree Conservation Strategy*.



Figure 22 Oblique aerial view from the west, 1954. Note that the western forecourt still incorporates a circular garden plan, and the assortment of huts used for the Migrant Reception Centre.

Source: Reproduced from *Carlton Gardens: Tree Conservation Strategy*.

APPENDIX E HISTORIC PLANS OF THE ROYAL EXHIBITION BUILDING

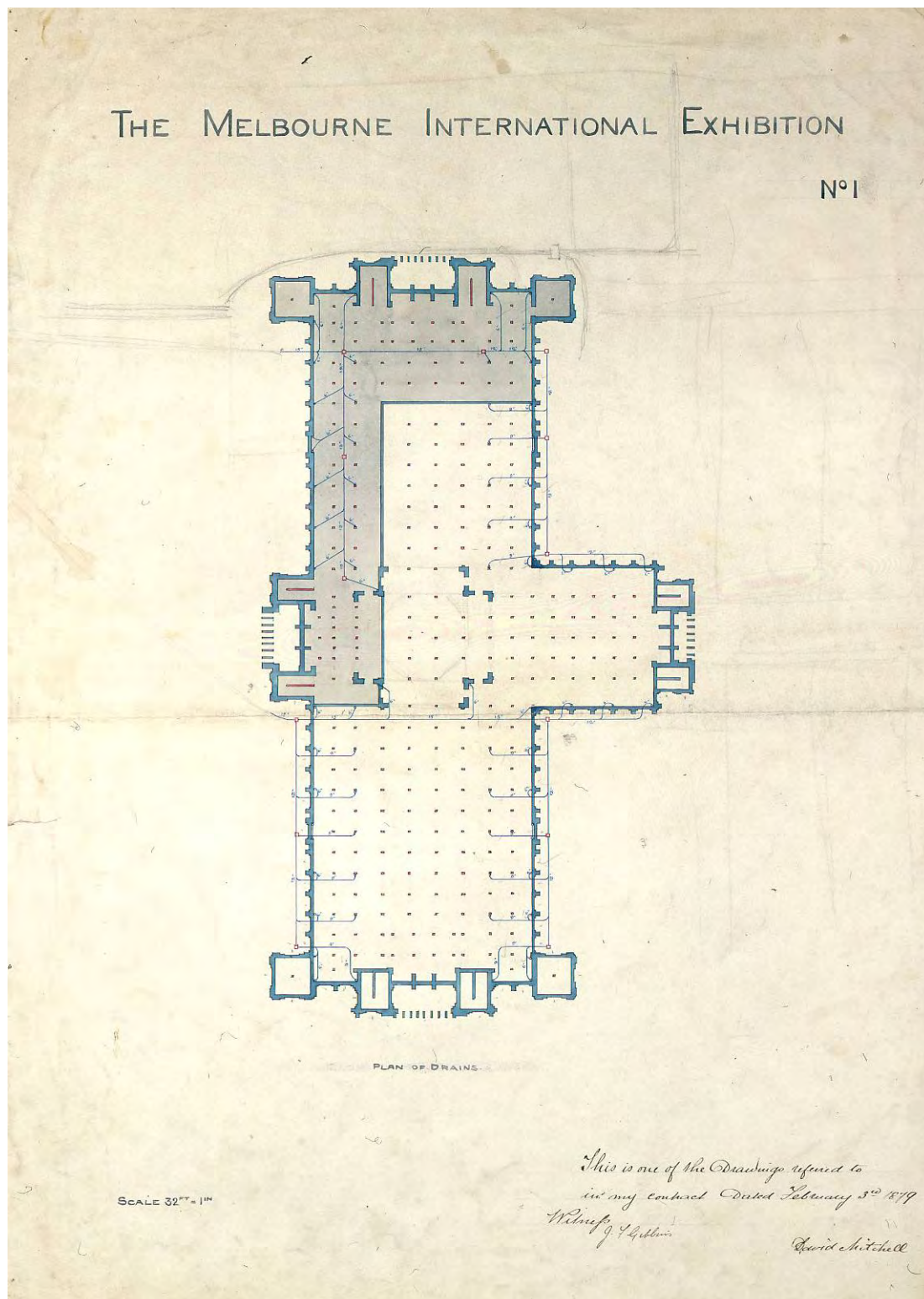


Figure 1 The Melbourne International Exhibition, plan of drains, 1879.
Source: Bates Smart & McCutcheon archives.

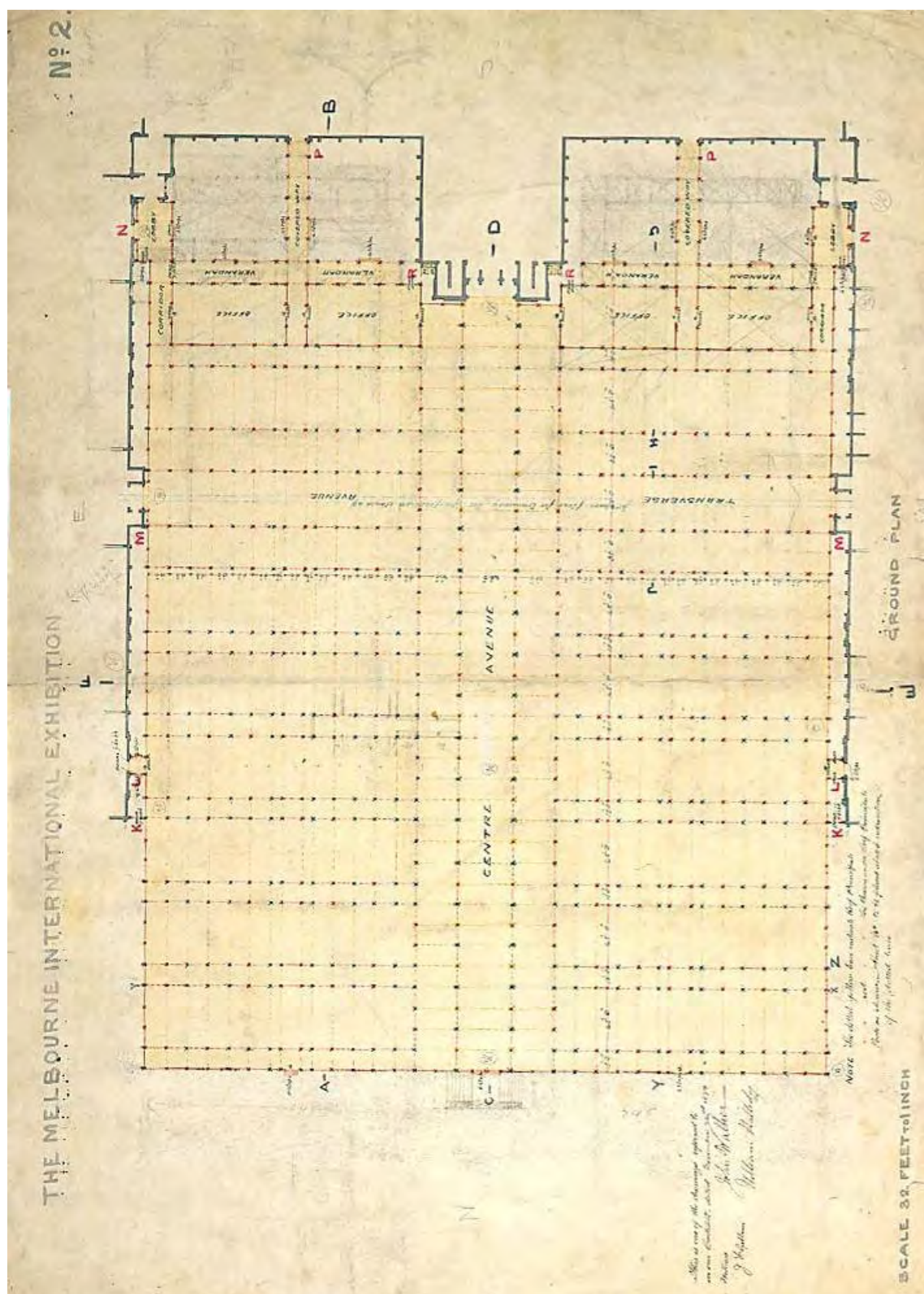


Figure 2 The Melbourne International Exhibition, ground plan of the Machinery Annexe, 1879.

Source: Bates Smart & McCutcheon archives.

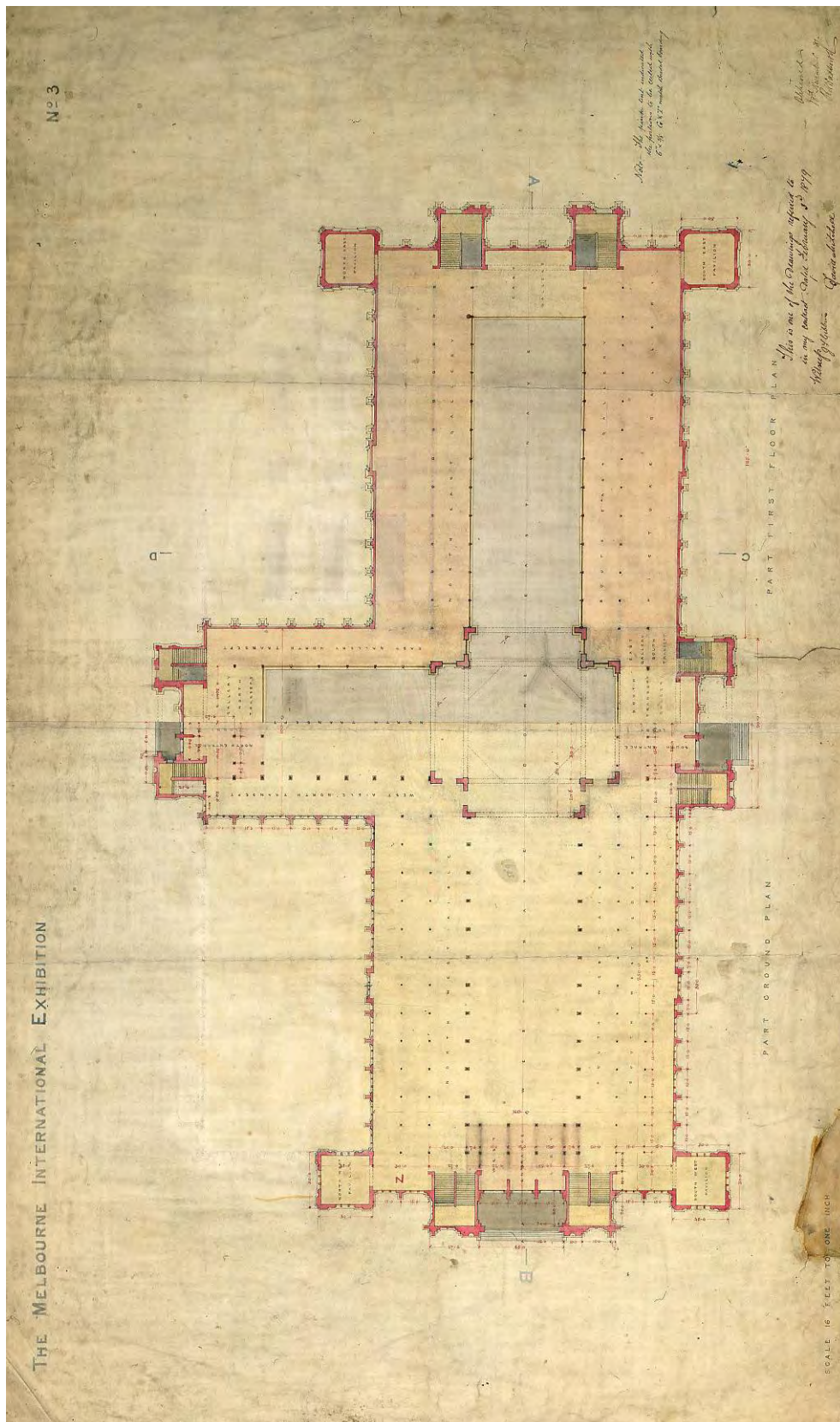


Figure 3 The Melbourne International Exhibition, part ground plan and part first floor plan, 1879.

Source: Bates Smart & McCutcheon archives.

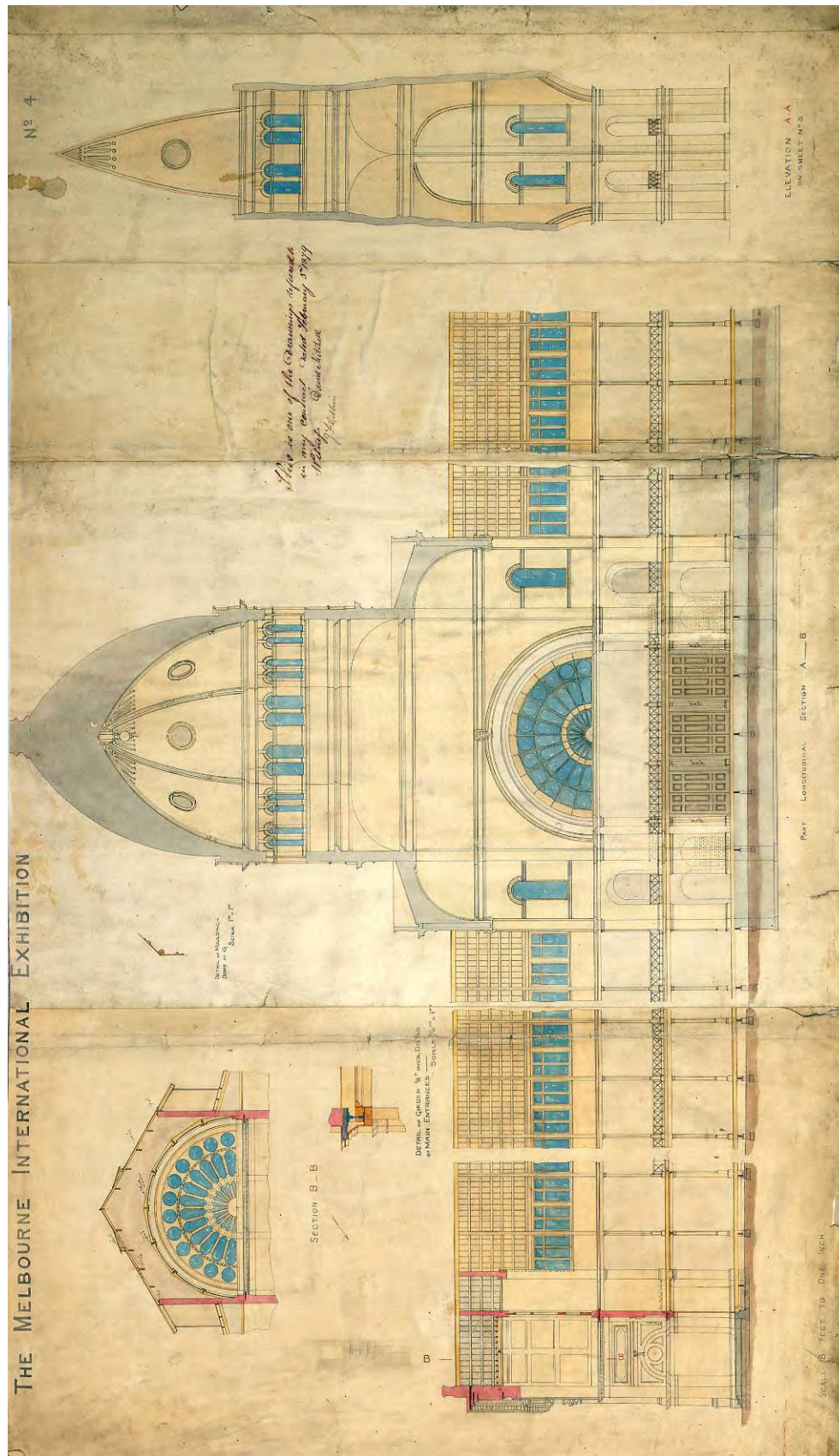


Figure 4 The Melbourne International Exhibition, part longitudinal section A—B, 1879.
Source: Bates Smart & McCutcheon archives.

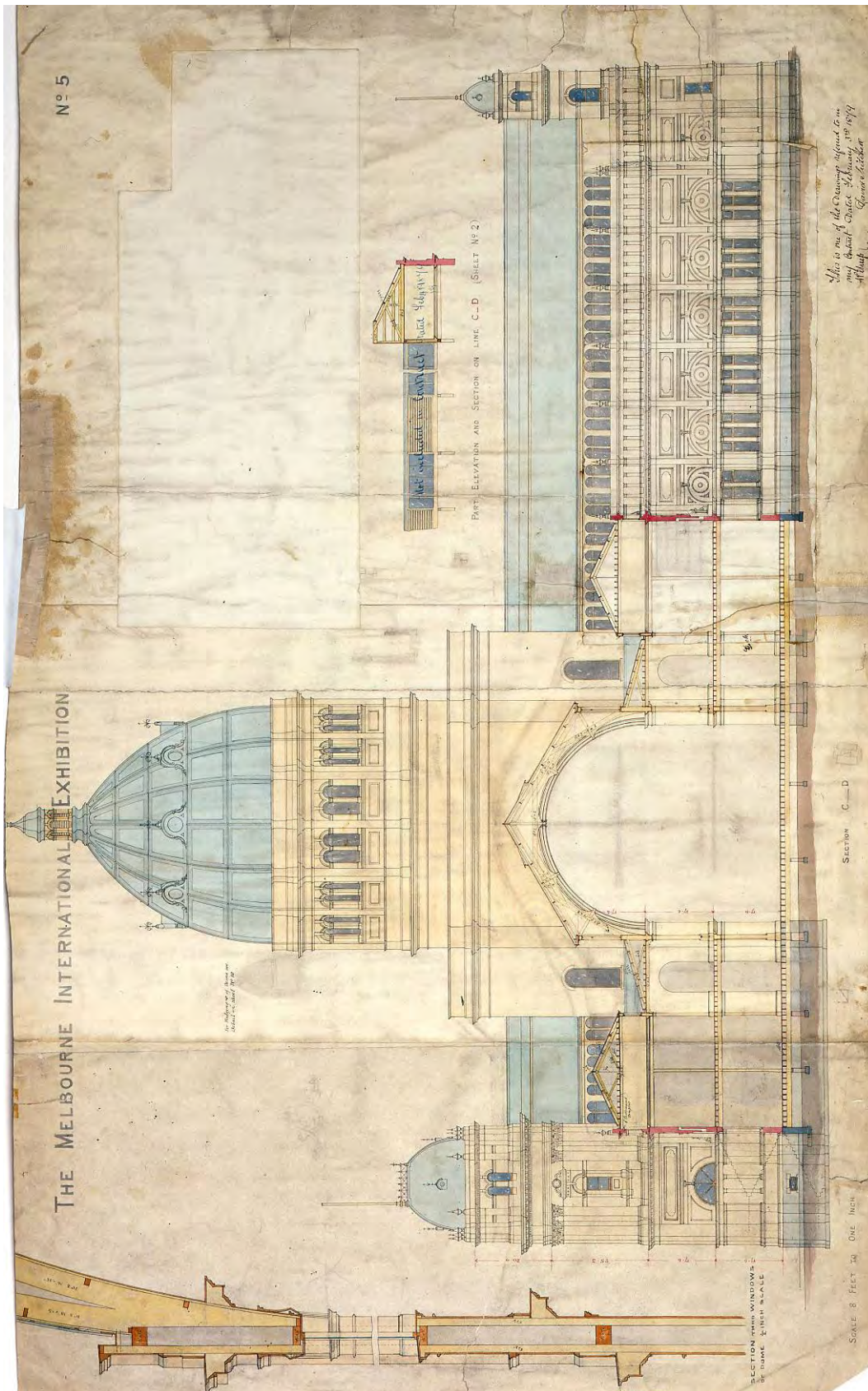


Figure 5 The Melbourne International Exhibition, section C—D, 1879.
Source: Bates Smart & McCutcheon archives.

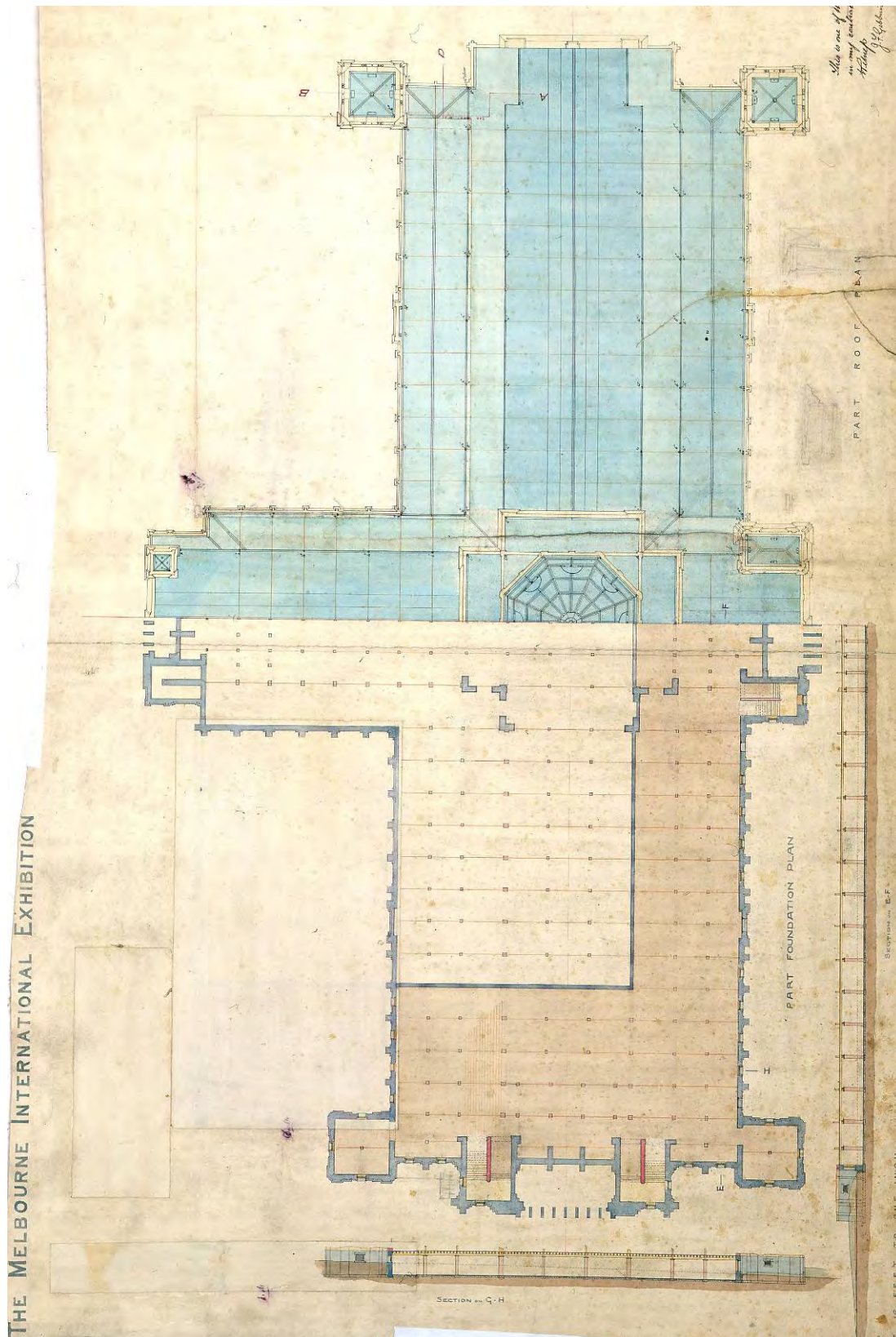


Figure 6 The Melbourne International Exhibition, part foundation plan, part roof plan, n.d.
Source: Bates Smart & McCutcheon archives.

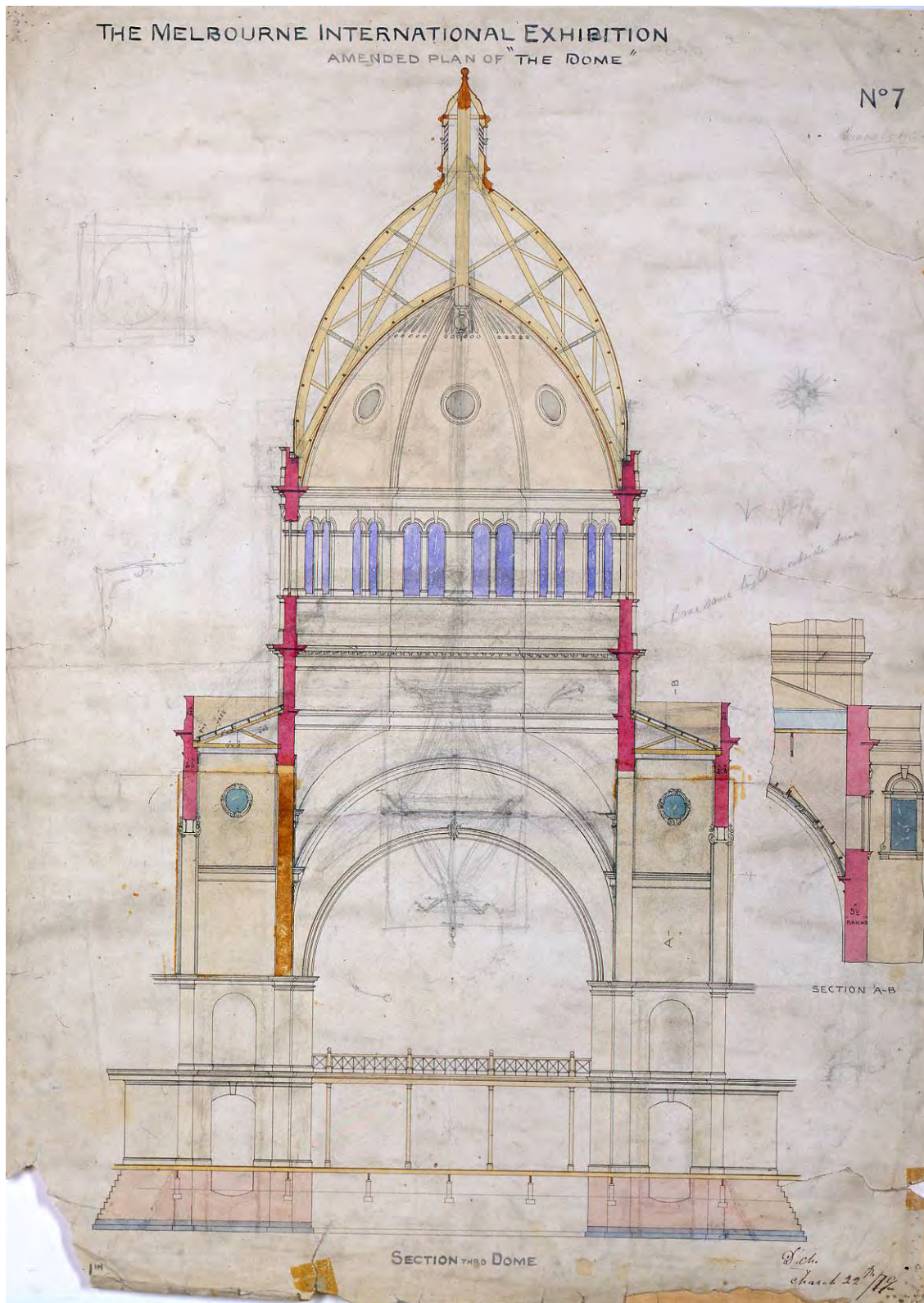


Figure 7 The Melbourne International Exhibition, amended plan of the dome, 1879.
Source: Bates Smart & McCutcheon archives.

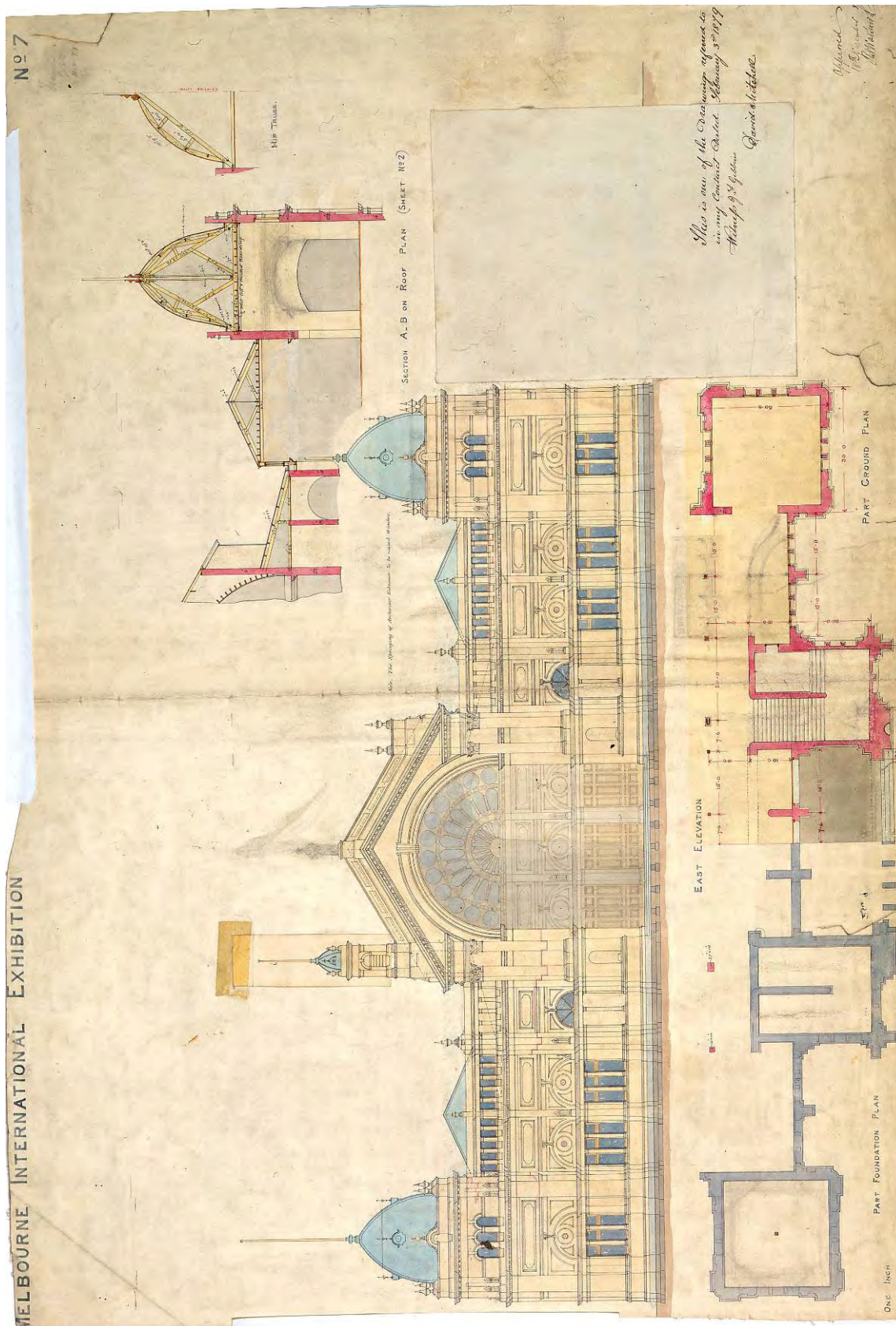


Figure 8 The Melbourne International Exhibition, east elevation, part foundation, part ground plan, & section A—B roof plan, 1879.
Source: Bates Smart & McCutcheon archives.

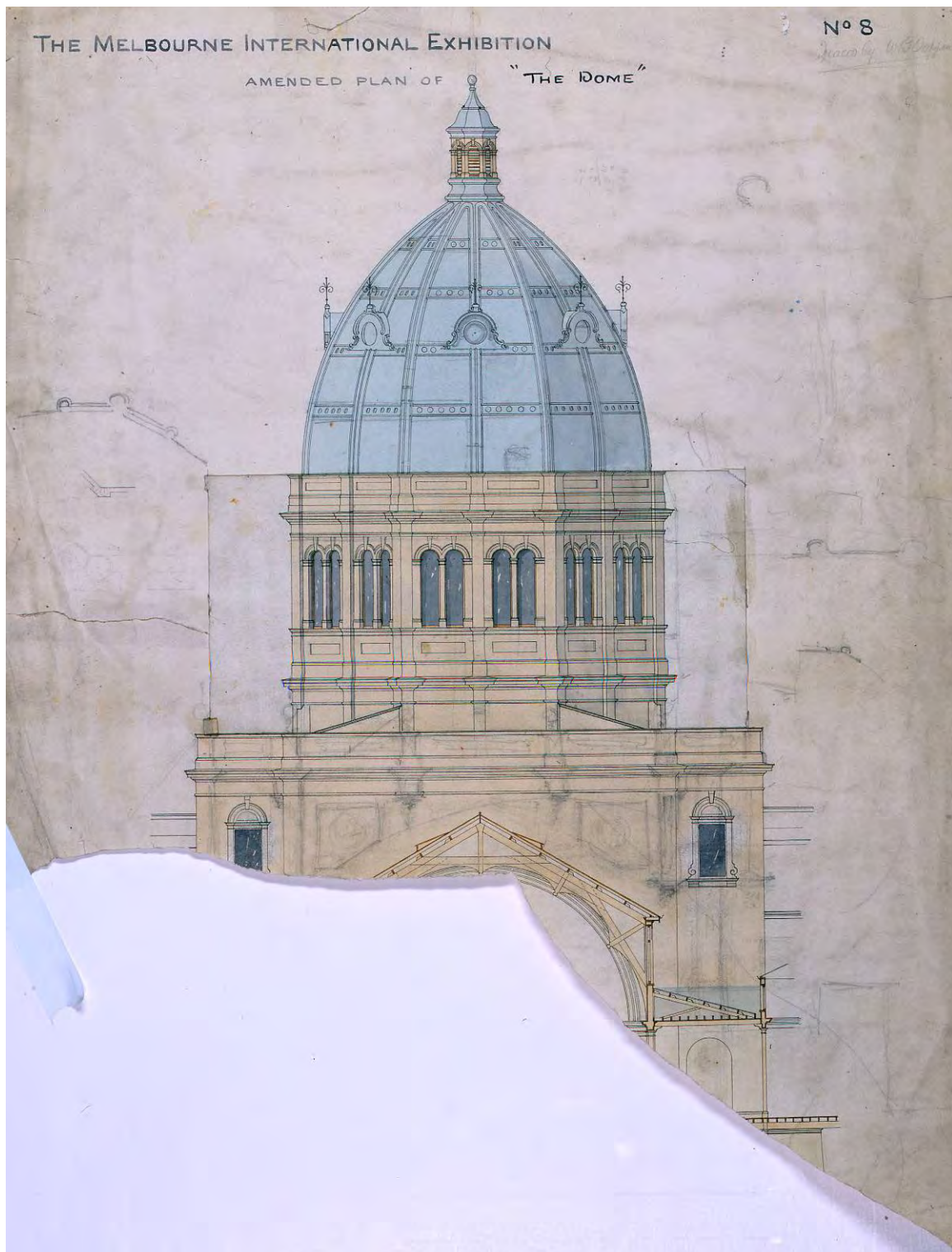


Figure 9 The Melbourne International Exhibition, amended plan of the dome, n.d.
Source: Bates Smart & McCutcheon archives.

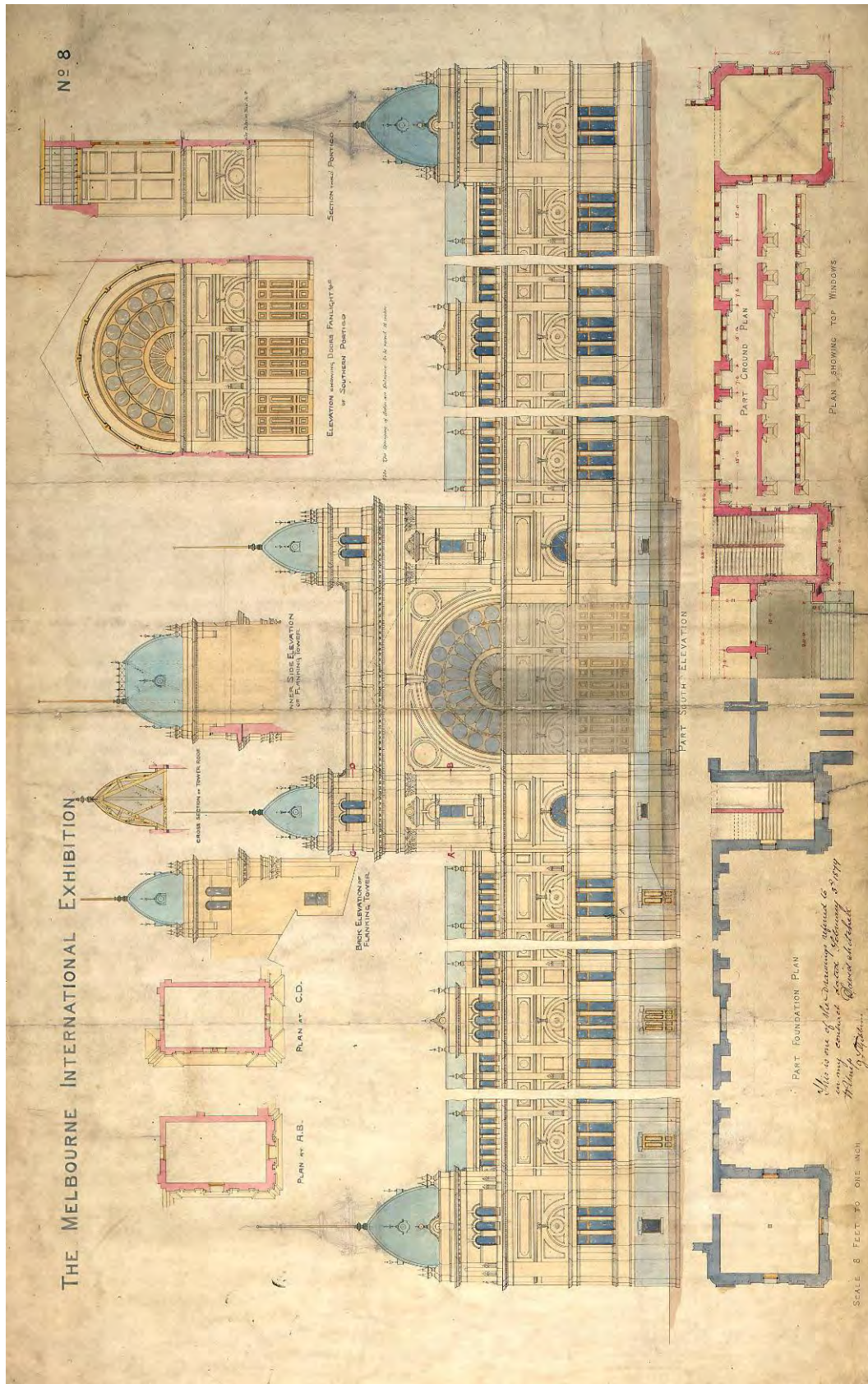


Figure 10 The Melbourne International Exhibition, part south elevation, 1879.
Source: Bates Smart & McCutcheon archives.

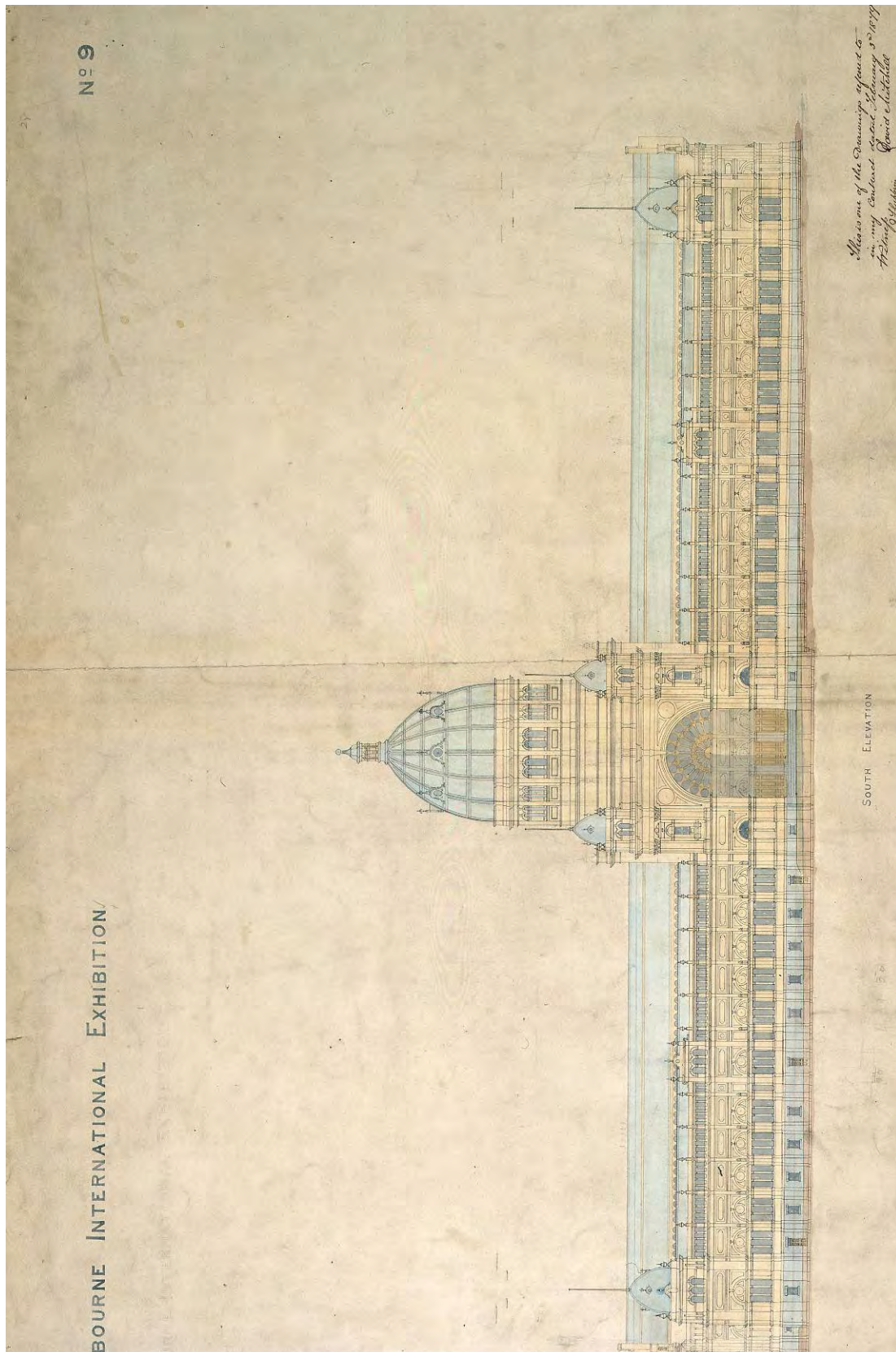


Figure 11 The Melbourne International Exhibition, south elevation, 1879.
Source: Bates Smart & McCutcheon archives.

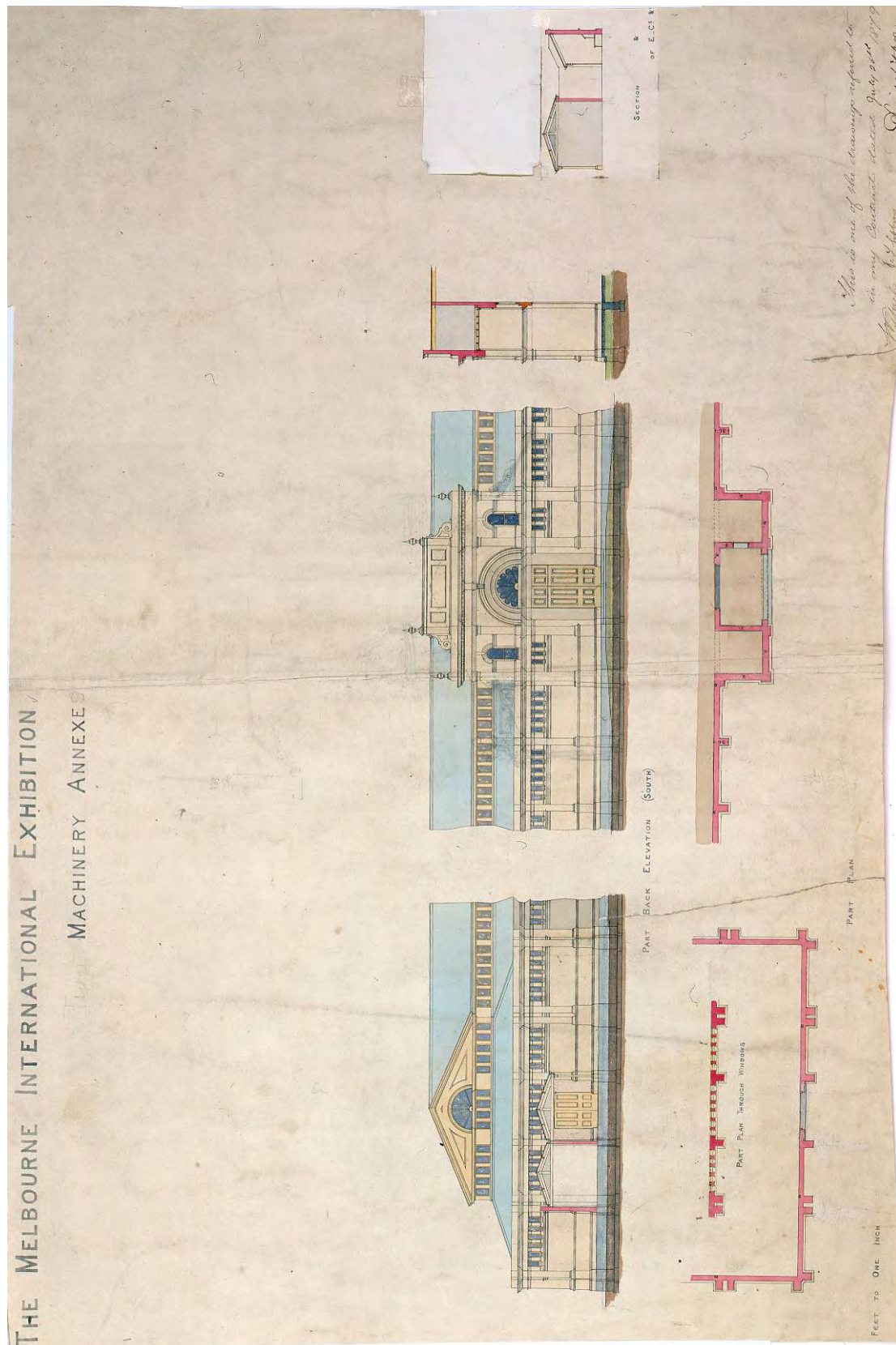


Figure 12 The Melbourne International Exhibition, Machinery Annexe, part back (south), 1879.

Source: Bates Smart & McCutcheon archives.

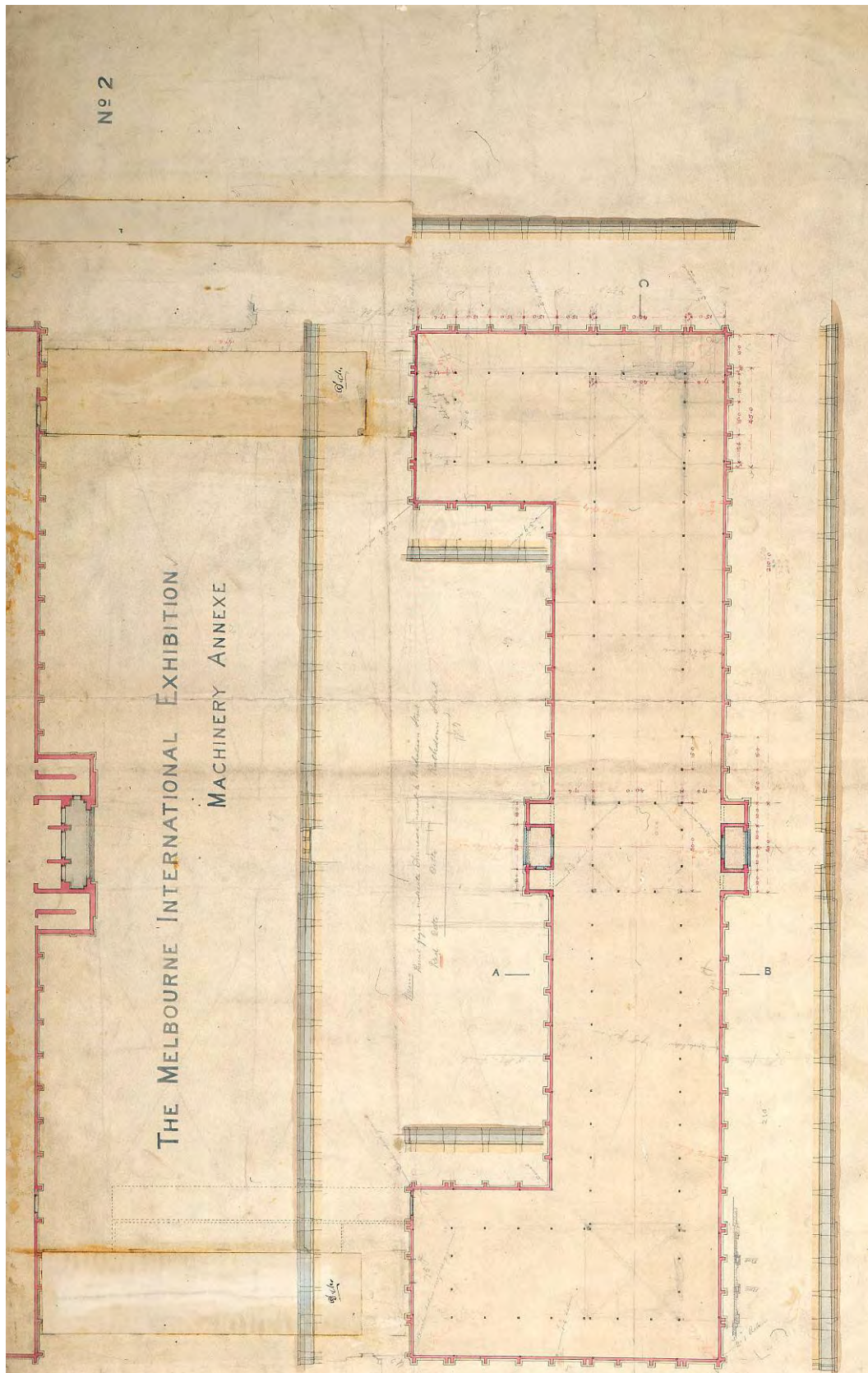


Figure 13 The Melbourne International Exhibition, Machinery Annexe, n.d.
Source: Bates Smart & McCutcheon archives.

APPENDIX F HISTORIC IMAGES



Figure 1 View of the rough paths and early planting in the Carlton Gardens, looking north from Parliament House, 1862.

Source: Reproduced from *Melbourne's Historic Public Gardens: A Management and Conservation Guide*.



Figure 2 Construction of the Dolphin Fountain for Carlton Gardens, designed by Mr Sullivan, 1861-1862.

Source: Picture Collection, State Library of Victoria.

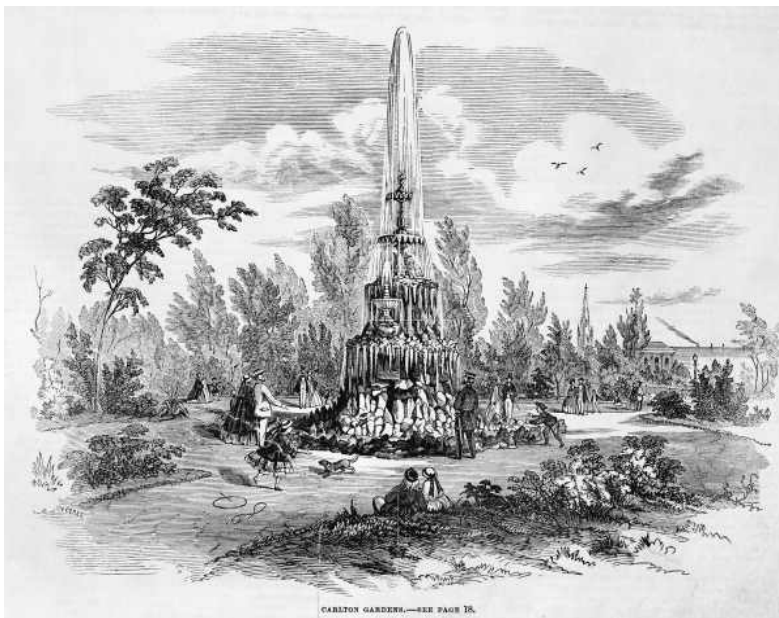


Figure 3 Dolphin Fountain in the Carlton Gardens, 1862.

Source: Picture Collection, State Library of Victoria.



Figure 4 Design for the Melbourne International Exhibition Building, 1878.
Source: Picture Collection, State Library of Victoria.



Figure 5 The Melbourne International Exhibition Building, c. 1880.
Source: Picture Collection, State Library of Victoria.



Figure 6 The Melbourne International Exhibition Building, 1880. Exterior view of the Exhibition Building depicting mature trees and formal garden plantings incorporated within the scheme's broad, interlacing promenades.
Source: Picture Collection, State Library of Victoria.



Figure 7 Interior of the Melbourne International Exhibition Building, 1880.
Source: Picture Collection, State Library of Victoria.



Figure 8 The Melbourne International Exhibition, interior under the dome, 1880.
Source: Picture Collection, State Library of Victoria.



Figure 9 The inaugural ceremony at the opening of the Melbourne International Exhibition, 1880.

Source: Picture Collection, State Library of Victoria.



Figure 10 The Exhibition Building's western and southern elevations, with iron palisade garden fence and corner gateway (foreground) supported by decorative hollow cast pillars surmounted by finials, c. 1880.

Source: Picture Collection, State Library of Victoria.



Figure 11 View of the eastern entrance to Melbourne International Exhibition, 1880-1881.
Source: Picture Collection, State Library of Victoria.



Figure 12 The Melbourne International Exhibition, c. 1880-1881, viewed from inside the Carlton Gardens' south-west perimeter; note the Hochgürtel fountain at right.
Source: Picture Collection, State Library of Victoria.



Figure 13 The interior of the main hall, 1880.
Source: Picture Collection, State Library of Victoria.



Figure 14 The lake in the gardens, 1880.
Source: Picture Collection, State Library of Victoria.



Figure 15 The Fernery at the Melbourne International Exhibition, 1880. Note the apsidal Fernery is shown on the ground plan of the International Exhibition. It terminates the Centre Avenue of the temporary annexes, and this illustration depicts the eaves of the Fernery's roof structure, located immediately beyond the entrance.
Source: Picture Collection, State Library of Victoria.

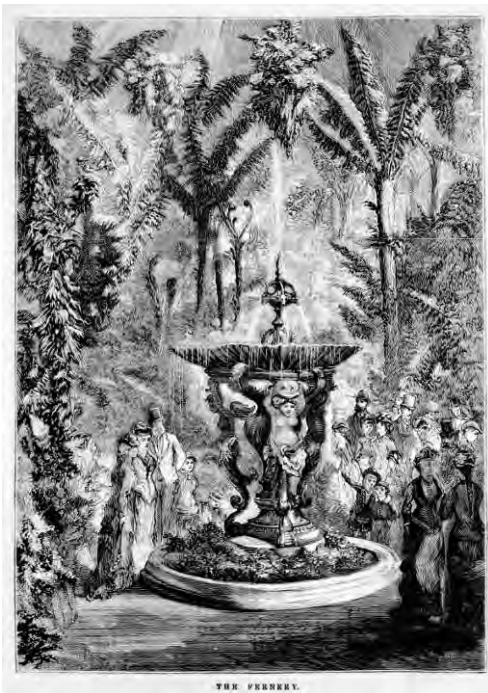


Figure 16 The Fernery, with fountain, 1880 (later known as the French Fountain and relocated to the Eastern Forecourt).
Source: Picture Collection, State Library of Victoria.



Figure 17 The walk from the south-west corner through the Carlton Gardens, c. 1881. Note large eucalypts at left of picture.
Source: Reproduced from *Melbourne's Historic Public Gardens: A Management and Conservation Guide*.

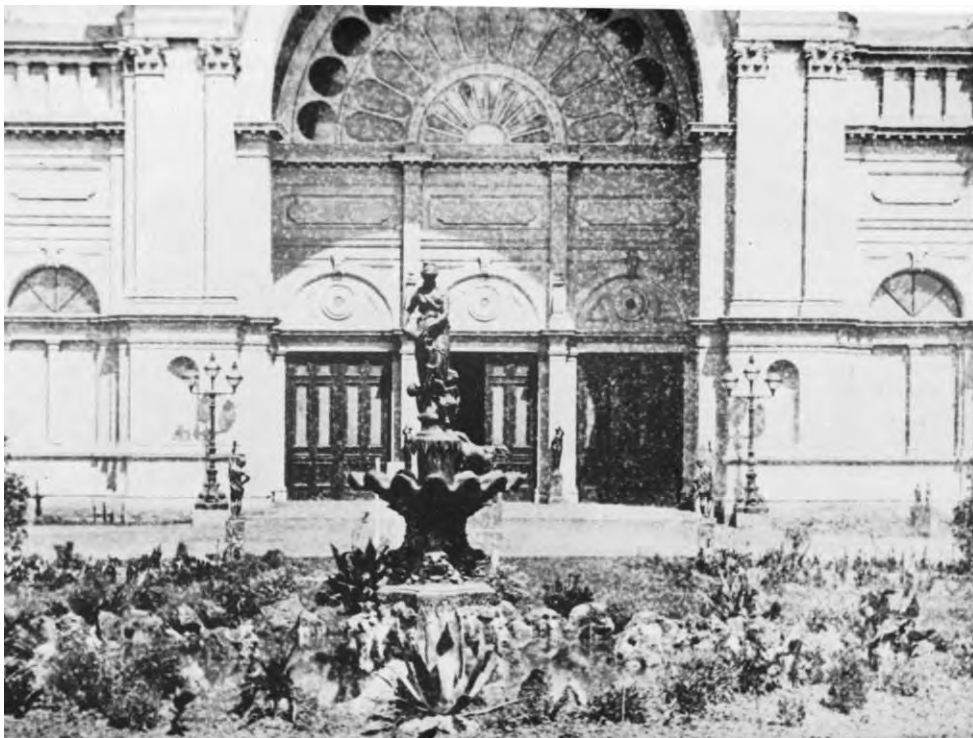


Figure 18 The French Fountain at the east entrance, c. 1881. This fountain was removed in the early 1900s and replaced, apparently with the fountain from the fernery, also referred to by the same name.
Source: Reproduced from *Melbourne's Historic Public Gardens: A Management and Conservation Guide*.



Figure 19 View of the Nicholson Street side of the Carlton Gardens seen from Victoria Parade, c. 1881, showing the then new iron gates and railing.
Source: Reproduced from *Melbourne's Historic Public Gardens: A Management and Conservation Guide*.



Figure 20 A fragment of the original Carlton Gardens palisade fence installed for the 1880 Exhibition, located by the gate lodge at the north-west corner. Most of the fencing was removed in 1925.
Source: Reproduced from *Melbourne's Historic Public Garden: A Management and Conservation Guide*.



Figure 21 Overlooking Melbourne from the dome viewing area, Exhibition Building, 1880. From elevated view points such as this, visitors to the Exhibition were able to appreciate not only views of the city and suburbs, but also views of Carlton Gardens' promenades and colourful patterning of formal parterre and border plantings.

Source: Picture Collection, State Library of Victoria.



Figure 22 Visitors viewing Melbourne from the dome viewing area, International Exhibition, 1880.

Source: Picture Collection, State Library of Victoria.



Figure 23 View to the south-east from the dome viewing area, Exhibition Building c. 1880.
Source: Reproduced from *Carlton Gardens: Tree Conservation Strategy*.



Figure 24 Melbourne from the dome viewing area, looking south, c. 1880-1890. Elevated view across Carlton Gardens showing lawns, shrubs, paths; looking towards Spring Street, the Model School at left, and Government House tower in the distance (centre left).
Source: Picture Collection, State Library of Victoria.



Figure 25 Melbourne from the dome viewing area c. 1880-1890. Elevated view of Carlton Gardens, view of Parliament House, St. Patrick's Cathedral under construction at left, Model School at right, Spring Street and Government House in the distance. Source: Picture Collection, State Library of Victoria.



Figure 26 View from the dome viewing area of Melbourne (south-west), c. 1883. Source: Picture Collection: State Library of Victoria.



Figure 27 View of Melbourne (west) from the dome viewing area, c. 1883. Elevated view of Carlton Gardens with a small portion of a parterre visible at lower right.
Source: Picture Collection, State Library of Victoria.



Figure 28 View from the dome of the Exhibition Building, undated. Showing the three avenues radiating from the Hochgürtel Fountain in the form of a patte d'oie or 'goose's foot' and the east-west fence aligned with the promenade, separating the south garden from the terrace and fountain. Note the palms surrounding the unfenced outer circular garden.
Source: Reproduced from *Civilising the City: A History of Melbourne's Public Gardens*.

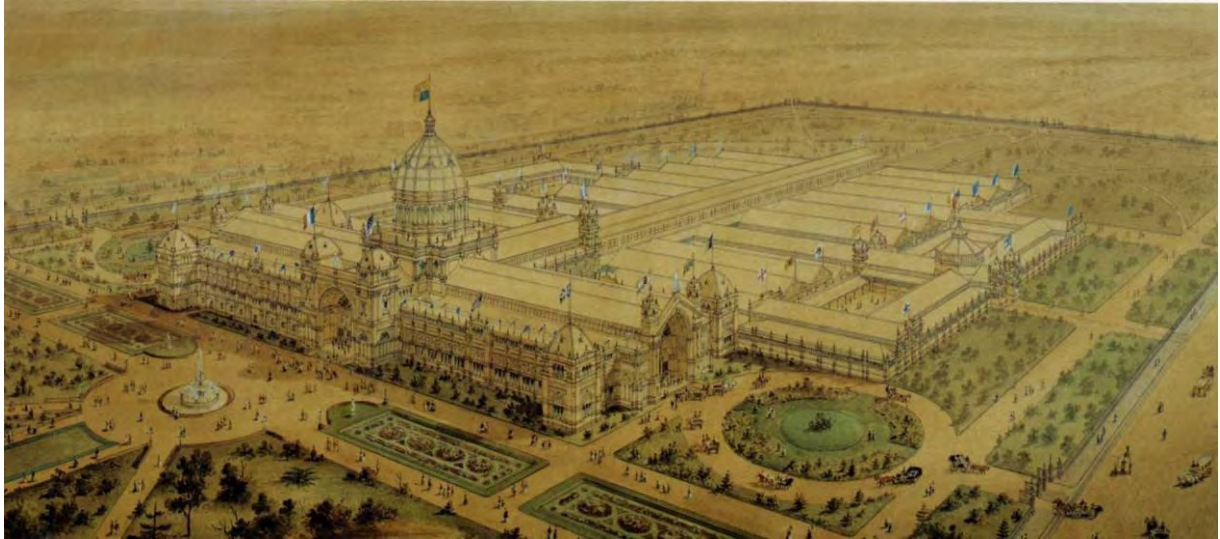


Figure 29 Possible scheme for the 1888 Exhibition Building and Carlton Gardens by Reed and Barnes.

Source: Reproduced from *Civilising the City: A History of Melbourne's Public Gardens*.



Figure 30 Illustration of the Melbourne Exhibition Building c. 1888.

Source: Picture Collection, State Library of Victoria.



Figure 31 Pictorial representation of annexes planned for the Melbourne Centennial Exhibition, 1888.
Source: Picture Collection, State Library of Victoria.



Figure 32 View showing erection of an annex to the Exhibition Building, c. 1887.
Source: Picture Collection, State Library of Victoria.



Figure 33 View of the south-eastern approach to the Exhibition Building's southern entrance terminating at the Hochgürtel Fountain, 1888.
Source: Picture Collection, State Library of Victoria.



Figure 34 The Exhibition Building by night, 1888. View of the eastern (Nicholson Street) approach, depicting the circular fenced garden enclosure surrounding the French Fountain, and part of the sculpture forecourt, with the Westgarth drinking fountain facing the eastern entrance.

Source: Picture Collection, State Library of Victoria.



Figure 35 Exhibition Building viewed from the south-east for the Centennial Exhibition 1888-9.

Source: Picture Collection, State Library of Victoria.



Figure 36 The Exhibition Building, n.d. Elevated view of the Carlton Gardens, showing the southern and eastern facades, Eastern Annexe, and column representing Australian gold, installed outside the southern entrance for the 1888-9 Centennial Exhibition.

Source: Picture Collection, State Library of Victoria.



Figure 37 View of the southern façade, Hochgürtel fountain, and column representing Australian gold at the Centennial Exhibition, 1888-9.
Source: Picture Collection, State Library of Victoria.



Figure 38 View along the Grand Allée leading from Victoria Street to the south façade flanked by iron lamp posts supporting gas-lit lamps, wide dual asphalt paths, and an avenue of mature plane trees, 1888-9.
Source: Picture Collection, State Library of Victoria.



Figure 39 Carlton Gardens, c. 1890-1900. Note that the circular garden bed surrounding the Hochgürtel Fountain was re-designed after 1880s.
Source: Picture Collection, State Library of Victoria.



Figure 40 View from south with Model School in foreground, c. 1890.
Source: Picture Collection, State Library of Victoria.



Figure 41 Exhibition Building, c. 1895.
Source: Picture Collection, State Library of Victoria.



Figure 42 Exhibition Building viewed from the south-west, c. late 19th century.
Source: Picture Collection, State Library of Victoria.



Figure 43 Exhibition Building, c. 1895. Note the presence of an east-west double fence: a tall inner metal palisade fence and a low timber diagonal lattice fence in the front.

Source: Picture Collection, State Library of Victoria.

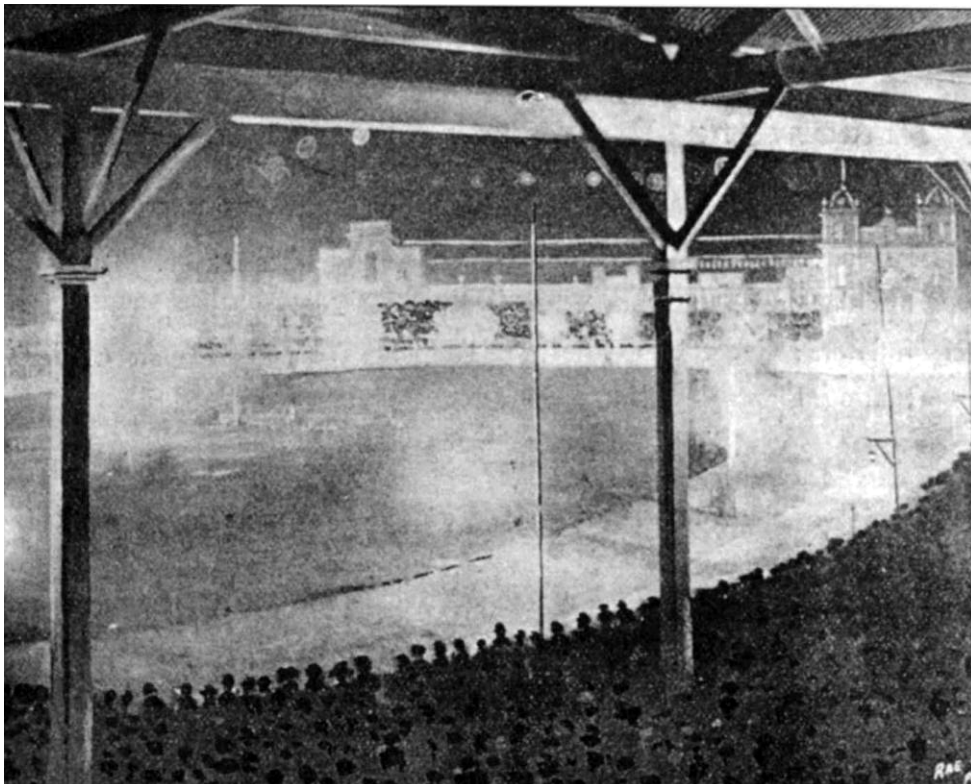


Figure 44 The upgraded cycle track lit by electric lighting, photographed at night from inside the pavilion, n.d.

Source: Reproduced from *Victorian Icon: The Royal Exhibition Building Melbourne*.



Figure 45 Exhibition Building showing the eastern entrance with its sculpture forecourt, circular garden and Eastern Annex, c. 1900.
Source: Picture Collection, State Library of Victoria.



Figure 46 Nationalistic floral garden bed planting representing a kangaroo, emu and shield surmounting the motto of the Australian Natives Association, 'Advance Australia', c. 1900.
Source: Picture Collection, State Library of Victoria.



Figure 47 Exhibition Building, early 20th century.
Source: Picture Collection, State Library of Victoria.



Figure 48 Statue of Victory (one of a pair) flanking the entrance to the Exhibition Building's eastern forecourt, undated. Note the palms planted in the circular French Fountain garden.
Source: Reproduced from *Civilising the City: A History of Melbourne's Public Gardens*.



Figure 49 Eastern forecourt showing the Eastern Annexe, several sculptures mounted on plinths, and the new French Fountain, whose base is colour 'enhanced' presumably for artistic reasons, early 20th century.
Source: Picture Collection, State Library of Victoria.

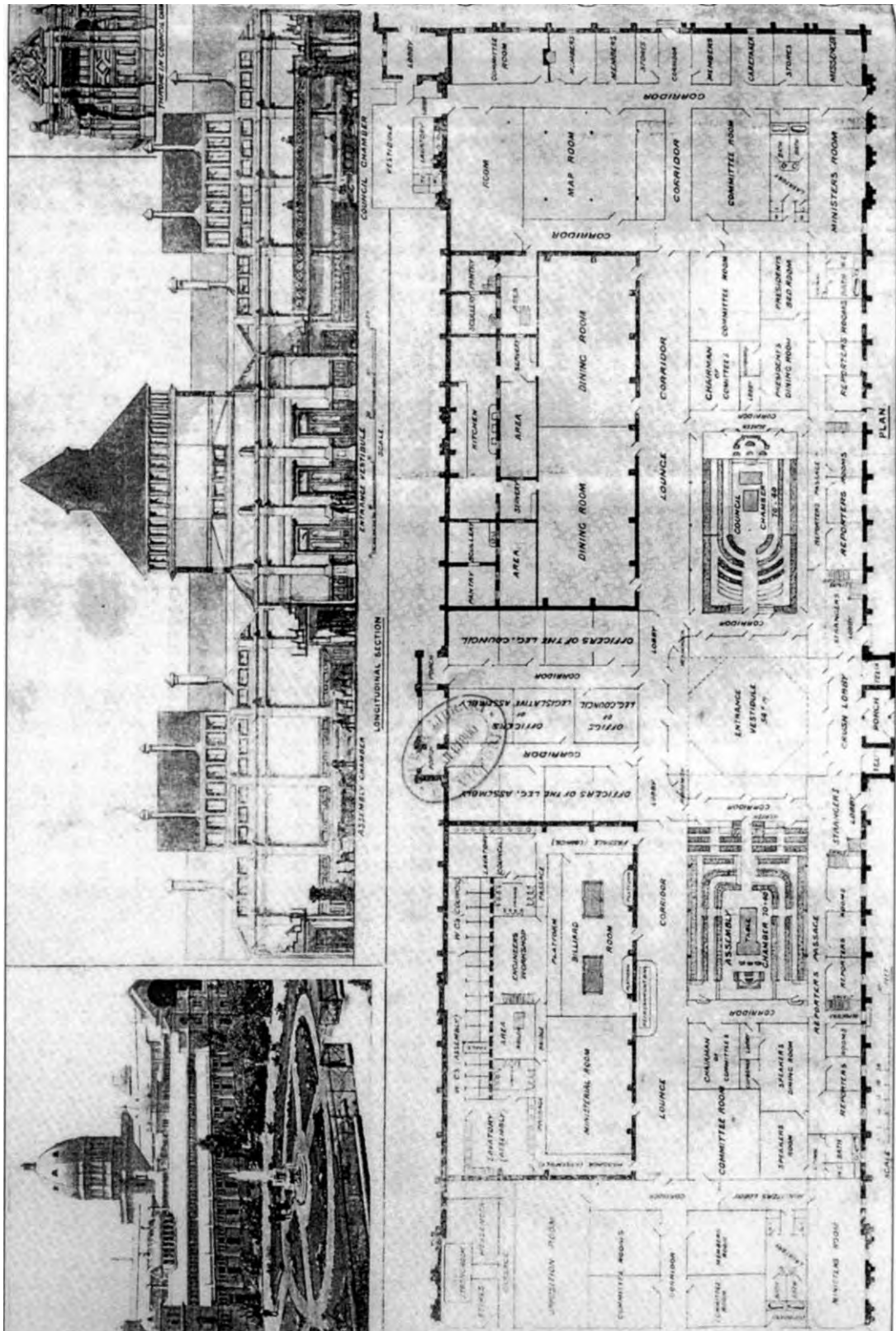


Figure 50 Modifications to the Western Annex of the Exhibition Building to house the Commonwealth Parliament, 1900.

Source: Reproduced from *Victorian Icon: The Royal Exhibition Building Melbourne*.

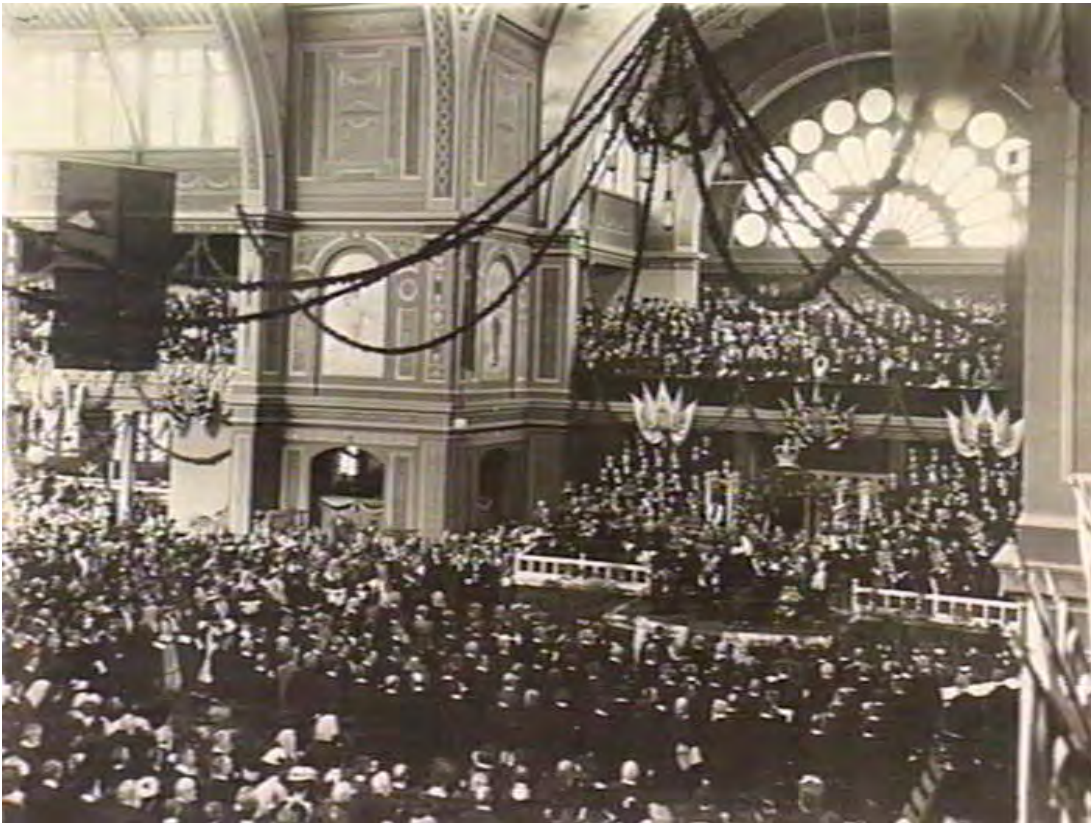


Figure 51 Opening of first Commonwealth Parliament by the Duke of York, looking toward the official party, 1901.

Source: Picture Collection, State Library of Victoria.



Figure 52 Raised ornate parterres located in the South Gardens, possibly planted for the opening of Parliament in May 1901.

Source: Picture Collection, State Library of Victoria.

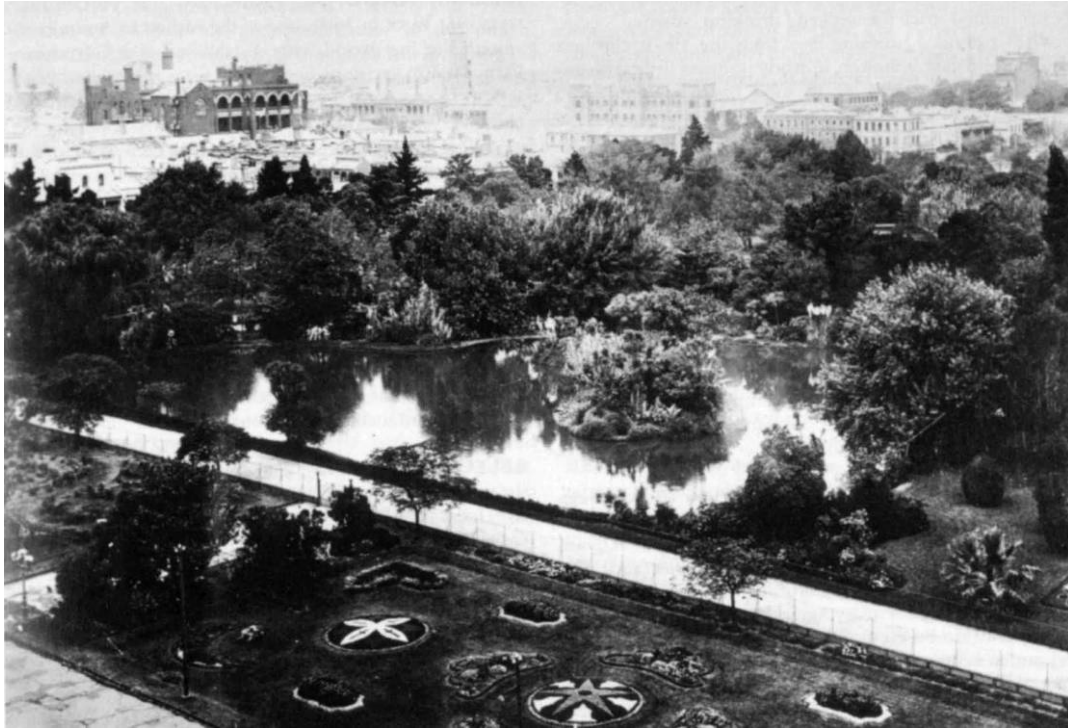


Figure 53 View of the Carlton Gardens parterre located east of the Hochgürtel Fountain opposite the south façade, as seen from the dome, early 20th century.
Source: Reproduced from *The Oxford Companion to Australian Gardens*.



Figure 54 Exhibition Building, 1901.
Source: Picture Collection, State Library of Victoria.



Figure 55 The Exhibition Building illuminated as part of the Commonwealth celebrations associated with the opening of Parliament and the visit of the Duke and Duchess of York, 1901.

Source: Picture Collection, State Library of Victoria.



Figure 56 The Exhibition Building, illuminated for the Commonwealth celebrations associated with the opening of Parliament, 1901.

Source: Picture Collection, State Library of Victoria.



Figure 57 State School fete at the Exhibition Building, 1901. View showing the oval pavilion and the maypole dancers performing opposite the Royal Box.
Source: Picture Collection, State Library of Victoria.



Figure 58 Celebrations marking the tour of the Duke and Duchess of York and Cornwall at the Exhibition Building, Melbourne, 1901.
Source: Picture Collection, State Library of Victoria.



Figure 59 Carlton Gardens, c. 1905, showing a high metal palisade fence separating the wide path from the formal, deeply layered garden beds.
Source: Picture Collection, State Library of Victoria.



Figure 60 Children from four State Schools planting pepper trees in the Carlton Gardens on Arbor Day, 1905.
Source: Reproduced from *Carlton*.

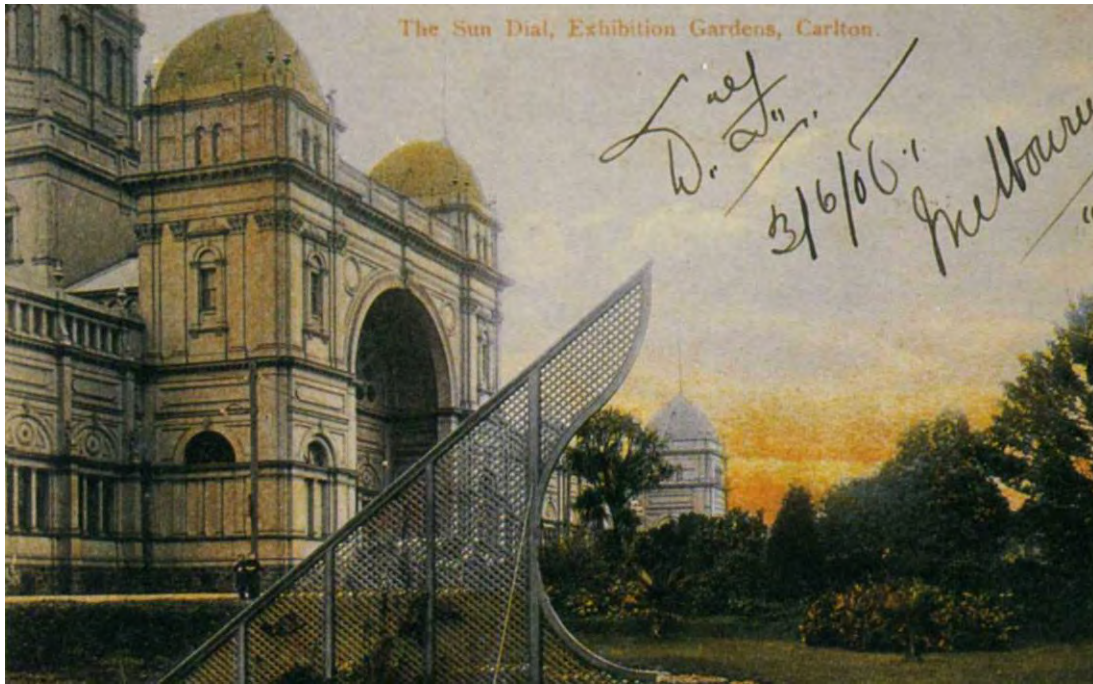


Figure 61 View of the southern entrance with the ornamental sundial in the foreground, c. 1905.

Source: Reproduced from *Victorian Icon: The Royal Exhibition Building Melbourne*.



Figure 62 Exhibition Building, showing the eastern entrance and fenced circular garden surrounding the French Fountain, c. 1900-05.

Source: Picture Collection, State Library of Victoria.



Figure 63 The Exhibition Building and Carlton Gardens, c. 1906.
Source: Picture Collection, State Library of Victoria.



Figure 64 Exhibition Building, c. 1907.
Source: Picture Collection, State Library of Victoria.



Figure 65 Hochgürtel Fountain, Carlton Gardens c. 1907, with low-growing plants and an iron palisade fence.

Source: Picture Collection, State Library of Victoria.

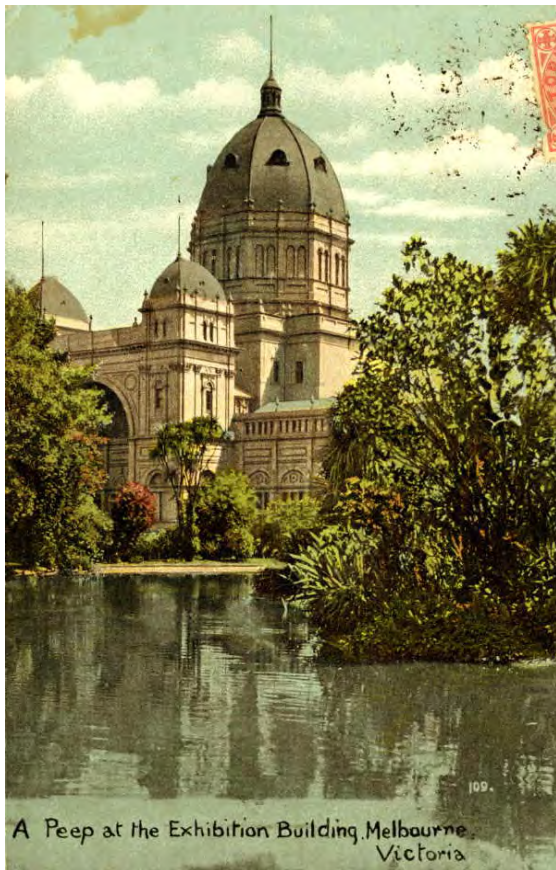


Figure 66 Exhibition Building showing the southern façade and ornamental lake with mature trees planted on an island, c. 1907.
Source: Picture Collection, State Library of Victoria.

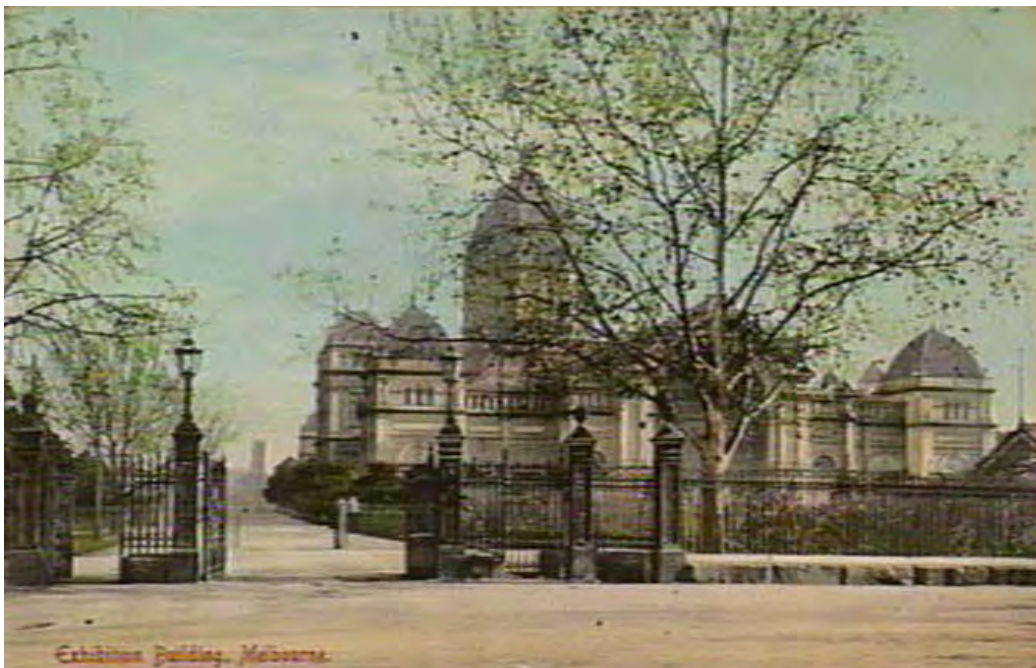


Figure 67 The Exhibition Building, c. 1910.
Source: Picture Collection, State Library of Victoria.



Figure 68 View of the Carlton Gardens, c. 1911, with the dome in the background.
Source: Picture Collection, State Library of Victoria.



Figure 69 Exhibition Building, viewed from the north, showing the northern entrance obscured by mature trees, the pavilion to the right overlooking the oval, and a wide pathway separating the oval from the Carlton Gardens, c. 1901-10.
Source: Picture collection, State Library of Victoria.



Figure 70 Bicycle races on the oval held before World War I, showing the grandstand pavilion and kiosk flanking the northern entrance to the Exhibition Building.
Source: Reproduced from *Victorian Icon: The Royal Exhibition Building Melbourne*.



Figure 71 Pouring concrete for the Nicholson Street entrance driveway at the Exhibition Building in the 1920s. Note that the French Fountain and statuary dating from the Great Exhibitions are still clearly visible.
Source: Reproduced from *Victorian Icon: The Royal Exhibition Building Melbourne*.