

T.C.L

452 St Kilda Rd  
SKETCH DESIGN

15.02.2024



© 2024 Taylor and Cullity Pty Ltd  
ABN 73 006 128 963

The information contained in this document is confidential and may be legally privileged. Any use, dissemination, distribution or reproduction of this content is prohibited.

**Melbourne**

*T +61 3 9380 4344  
E melb@tcl.net.au  
W tcl.net.au*

*385 Drummond Street,  
Carlton 3053*

**Adelaide**

*T +61 8 8223 7533  
E ade@tcl.net.au  
W tcl.net.au*

*109 Grote Street,  
Adelaide 5000*

**Sydney**

*T +61 4 9945 6077  
E syd@tcl.net.au  
W tcl.net.au*

*117 Reservoir Street,  
Surry Hills 2010*

**Brisbane**

*T +61 4 9847 4461  
E bris@tcl.net.au  
W tcl.net.au*

*PO Box 405  
Greenslopes 4120*

**Darwin**

*T +61 4 9888 0285  
E darwin@tcl.net.au  
W tcl.net.au*

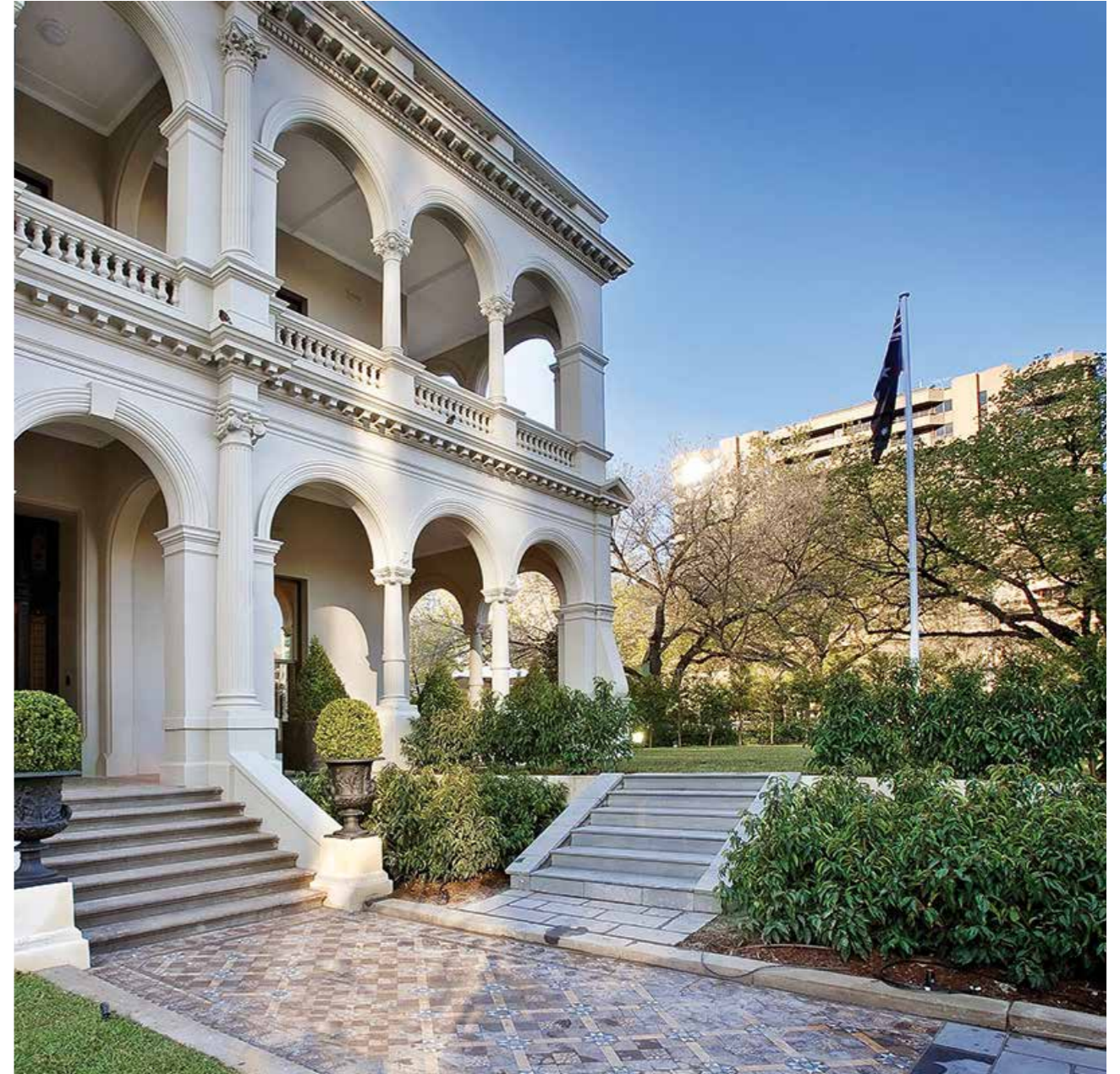
*Level 16, 19 Smith  
Street,  
Darwin 0800*

**TOWN PLANNING REPORT**

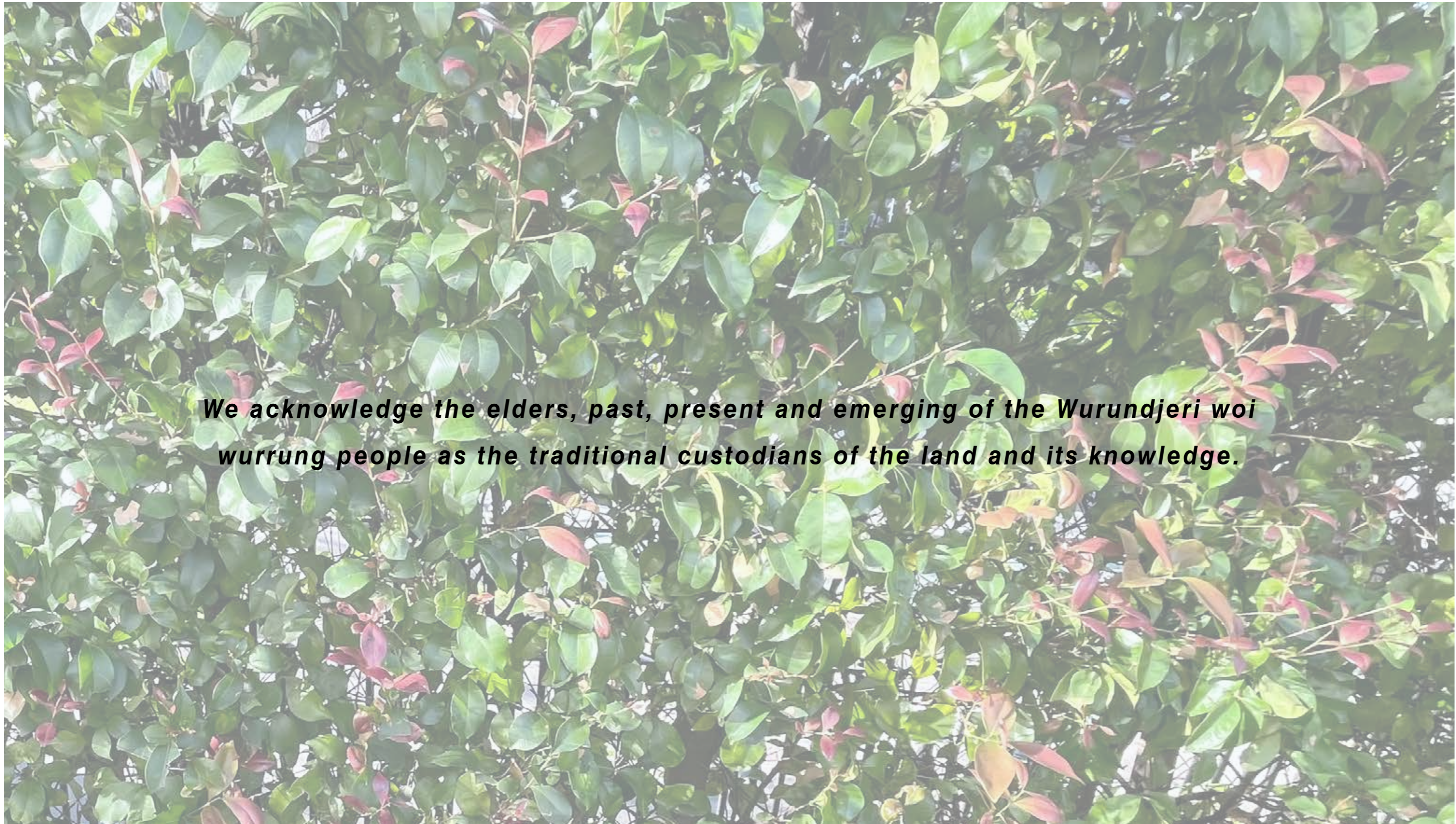
<b>Rev</b>	<b>Date</b>	<b>Purpose</b>
01	31.08.2023	Town Planning Report
02	15.02.2024	Heritage Submission

# CONTENTS

Contents	3
Introduction	5
Existing Conditions	6
Precedent Images	7
Landscape Proposal	8
Materials	9
Proposed Planting	10
Planting	11







***We acknowledge the elders, past, present and emerging of the Wurundjeri woi wurrung people as the traditional custodians of the land and its knowledge.***




# EXISTING





# EXISTING PLAN


## LEGEND

 Trees to be removed



ARTHUR ST

ST KILDA RD





 SCALE 1:200 @ A3

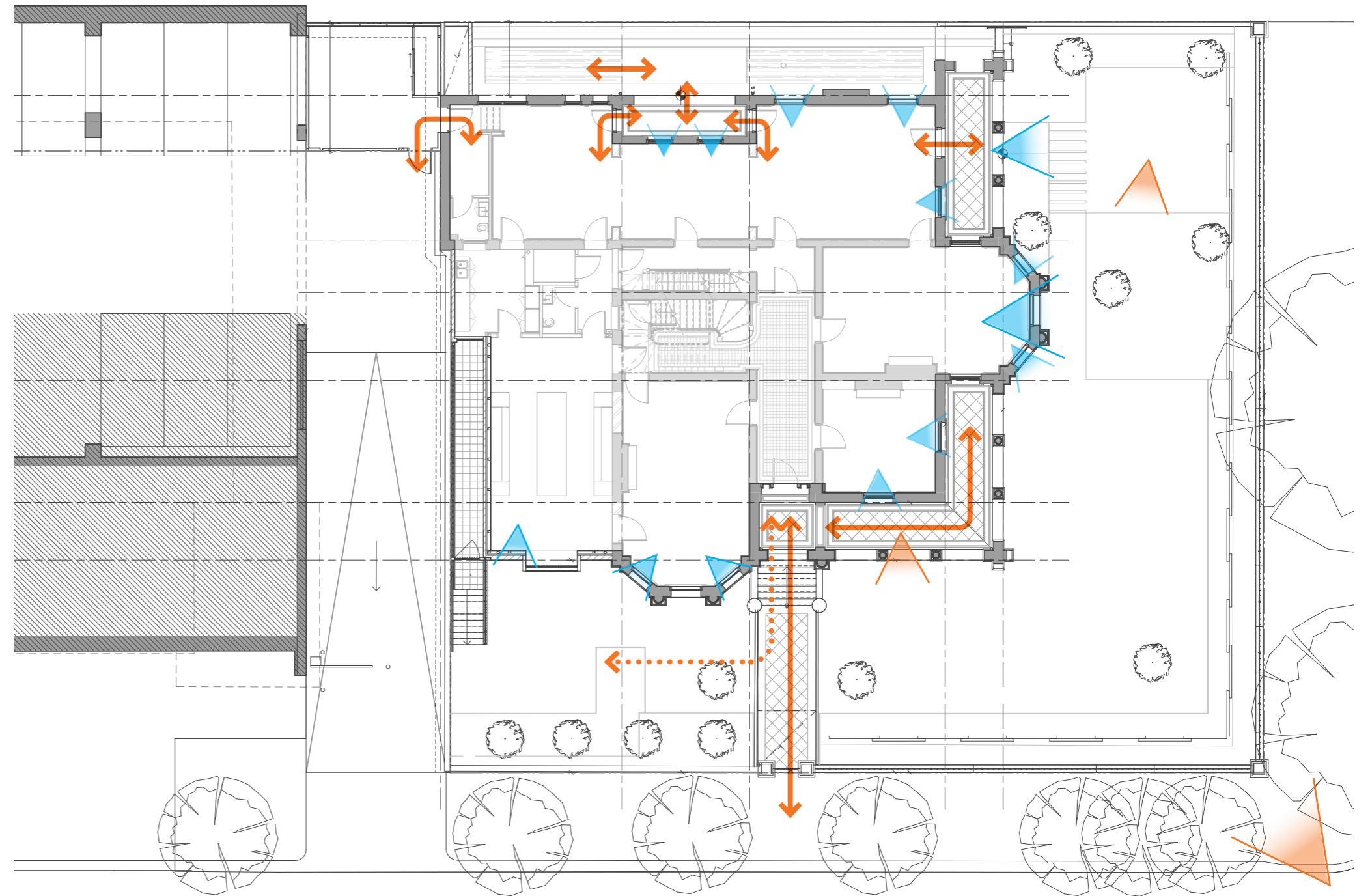
# ACCESS AND VIEWS

SCALE 1:200 @ A3

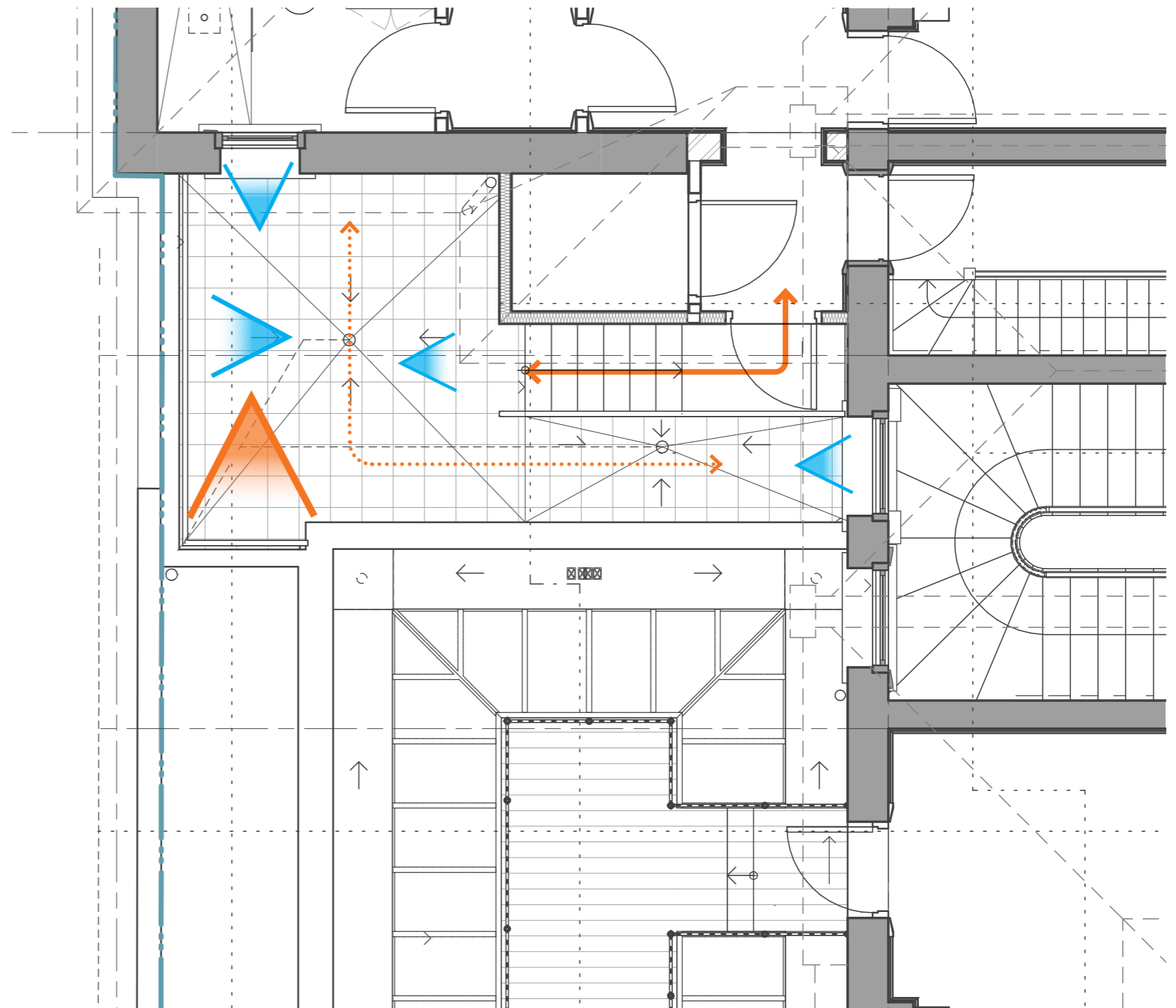


## LEGEND





-  Main Access
-  Guest Circulation
-  External View
-  Internal View



# ACCESS AND VIEWS



## LEGEND

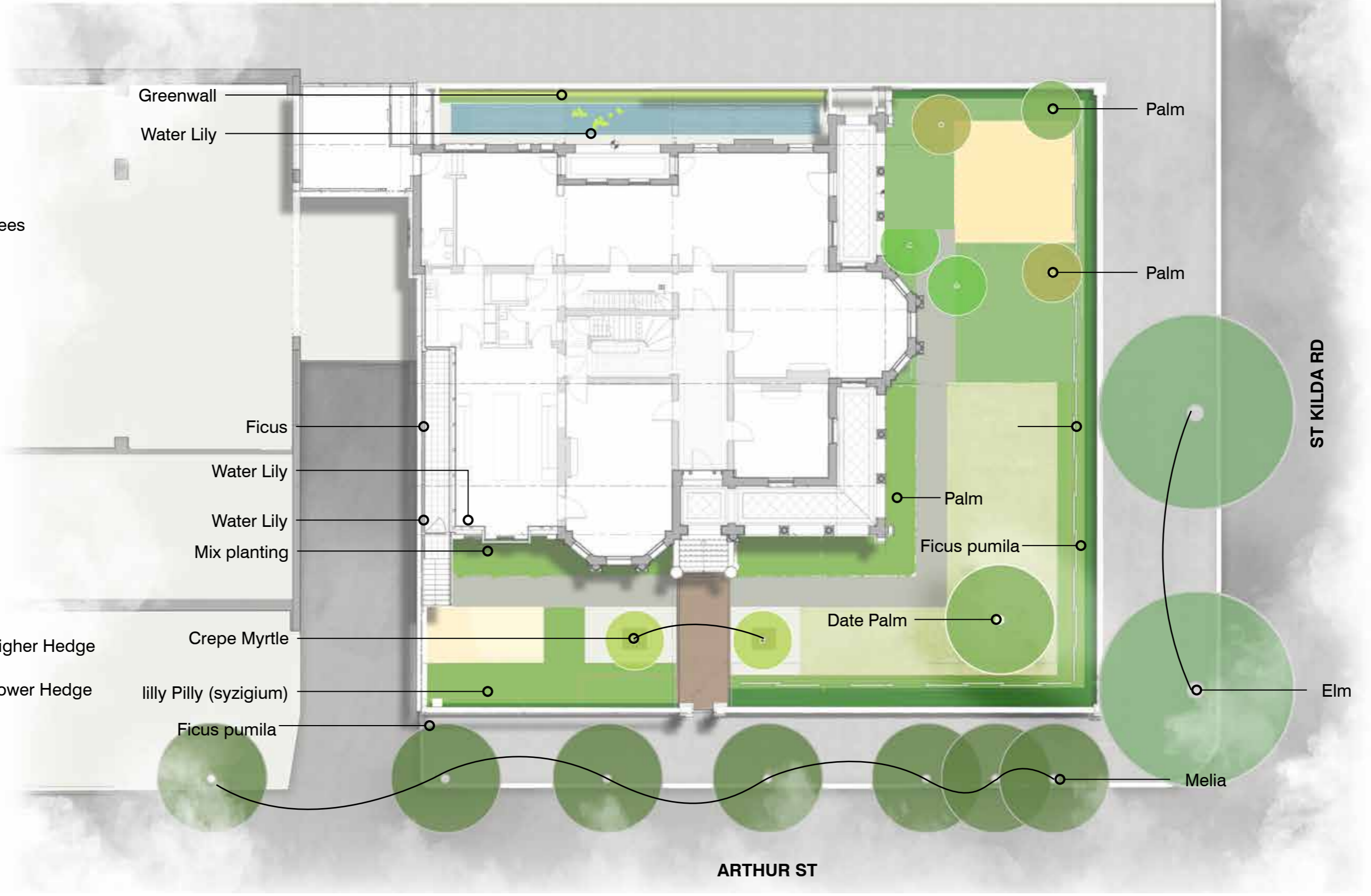
-  Stair Access
-  Circulation
-  External View
-  Internal View



# PROPOSED PLANTING

## LEGEND

-  Proposed Trees
-  Street Trees
-  Street Trees
-  Street Trees
-  Street Trees
-  Proposed Higher Hedge
-  Proposed Lower Hedge





# REMOVAL





# EXISTING FENCE CONDITIONS



1.South Fence



2.West Fence



3.East Fence



4.North Fence

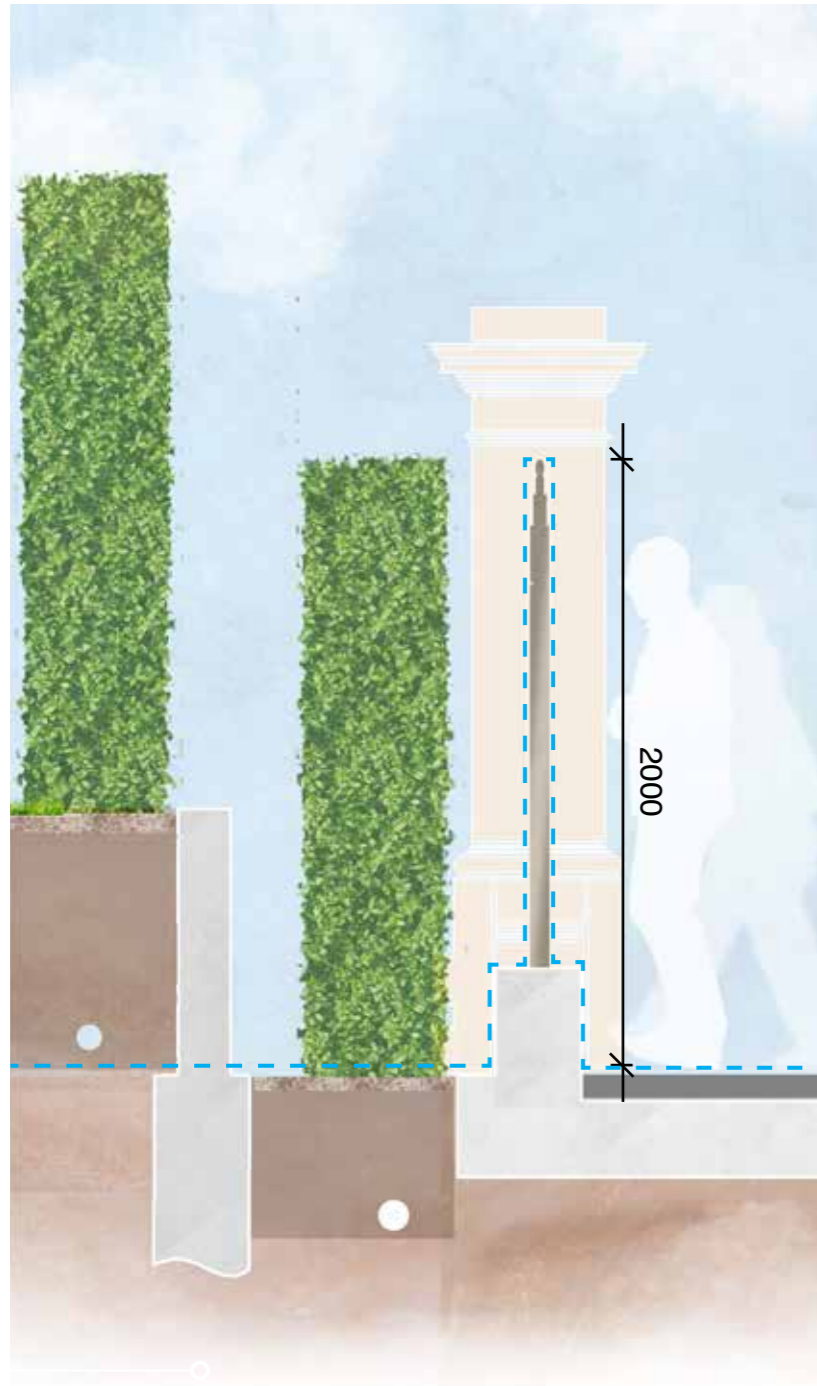
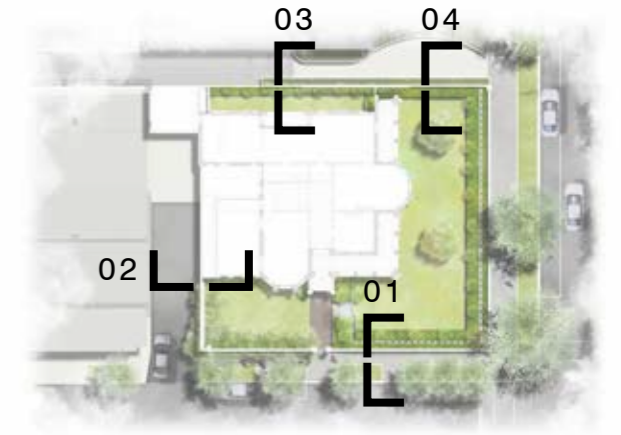




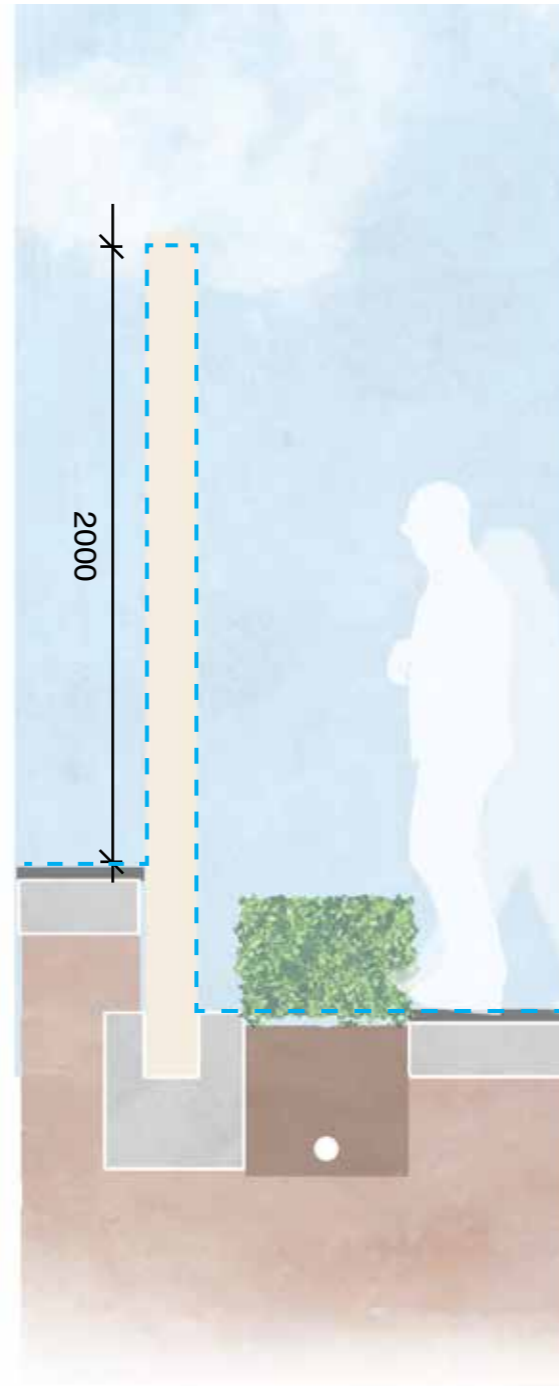
# EXISTING FENCE

## LEGEND

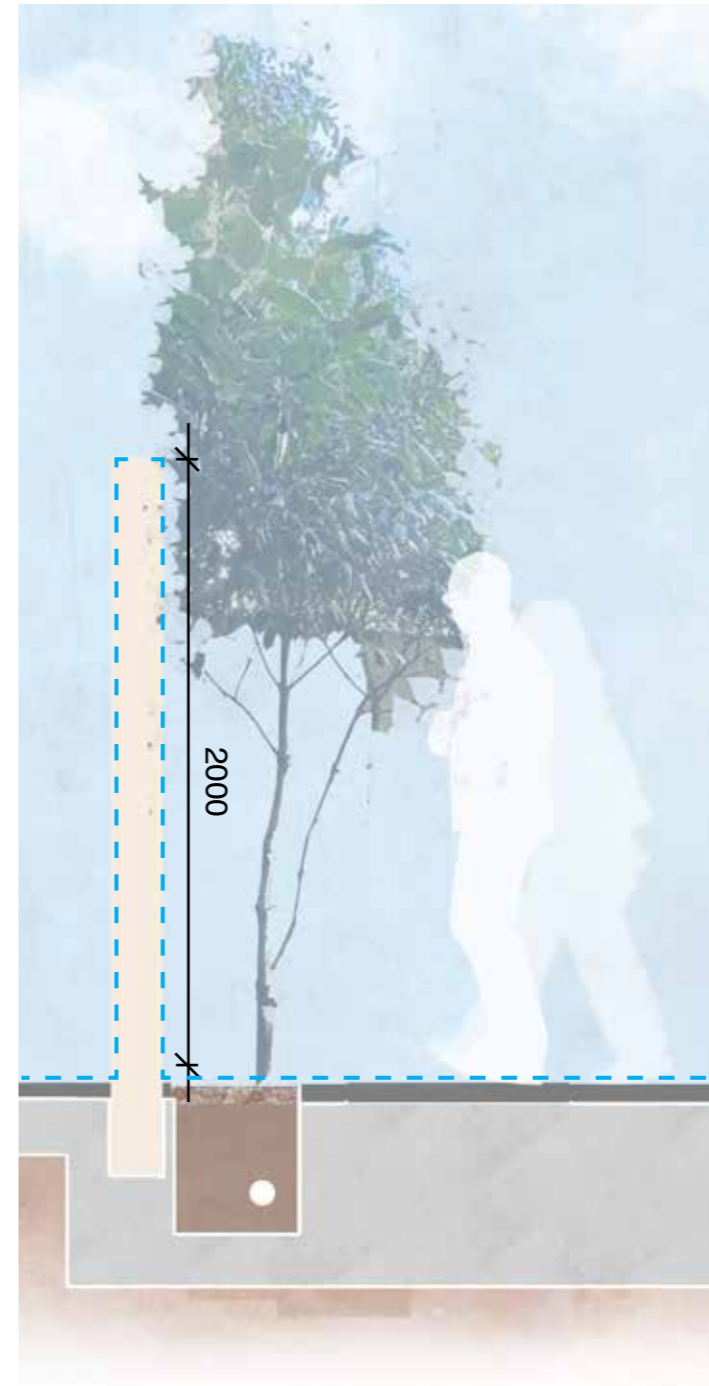
- - - To be retained



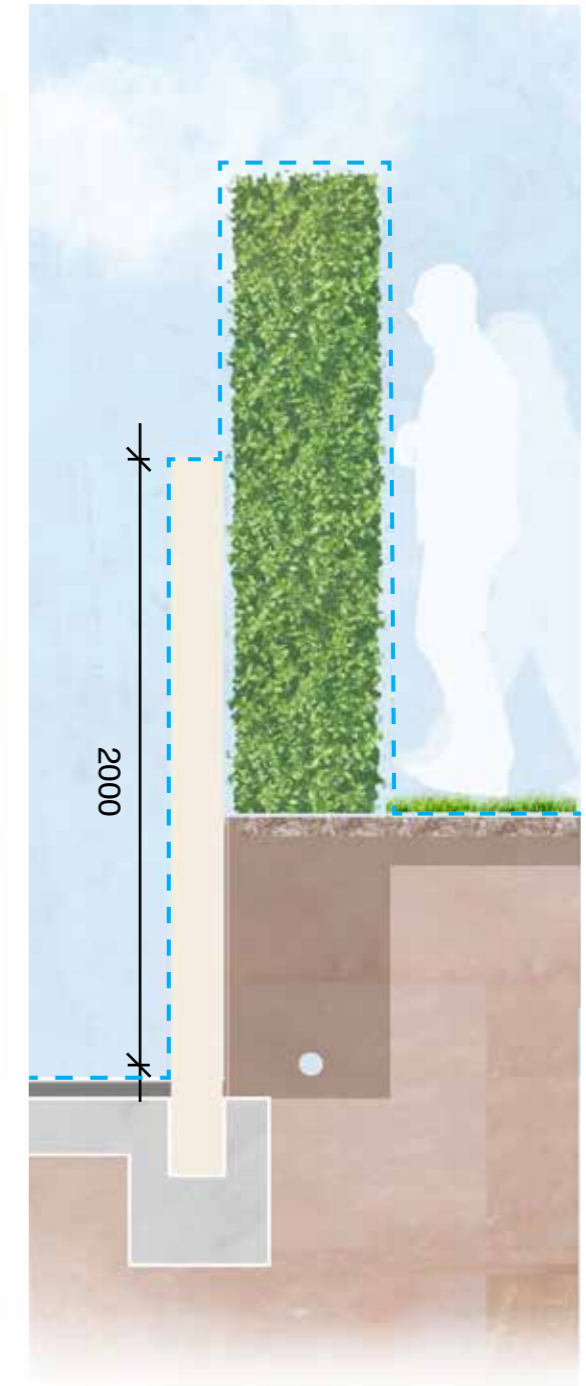
1. South Fence



2. West Fence



3. North Fence



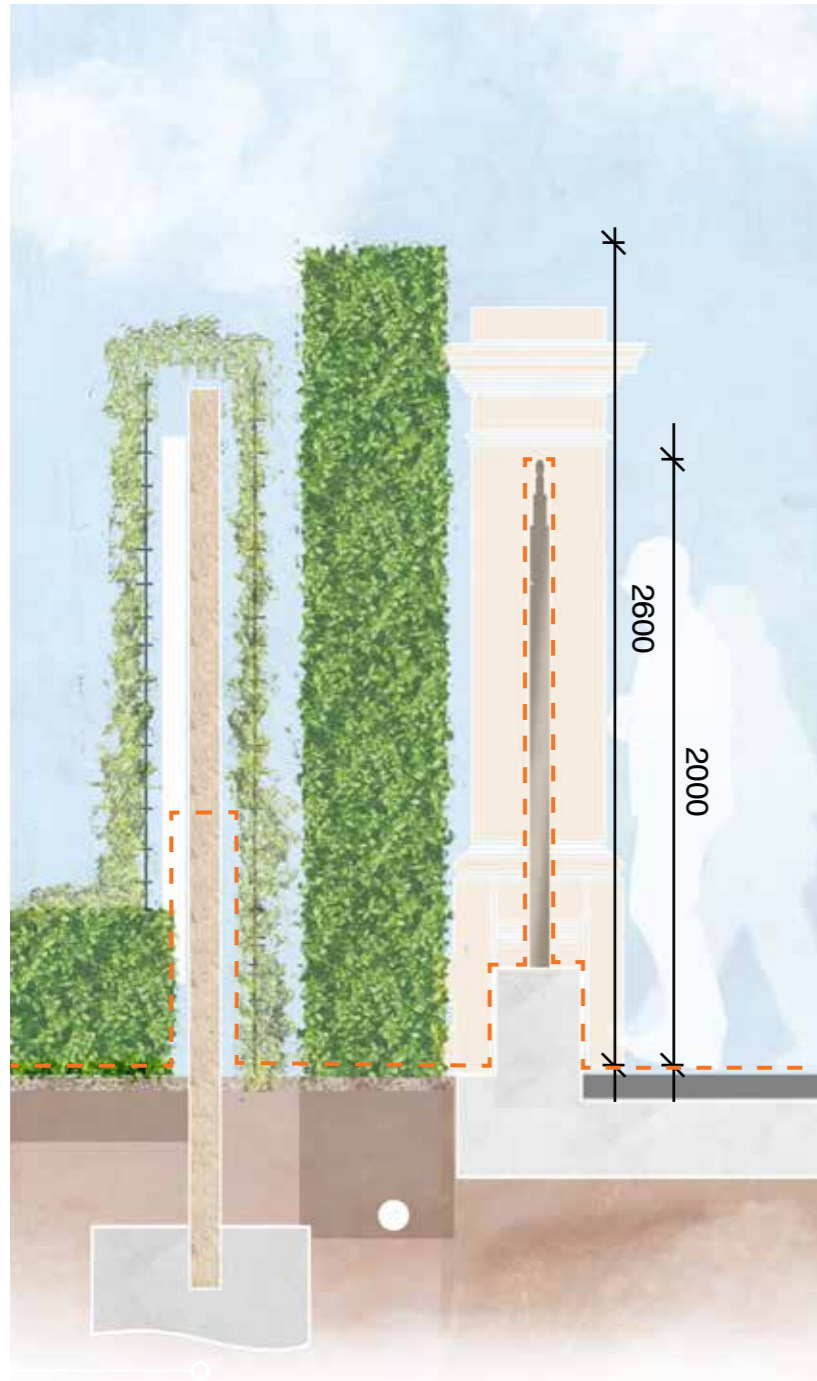
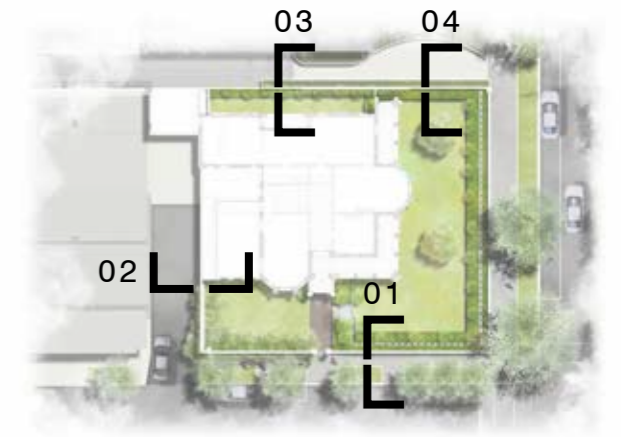
4. North Fence



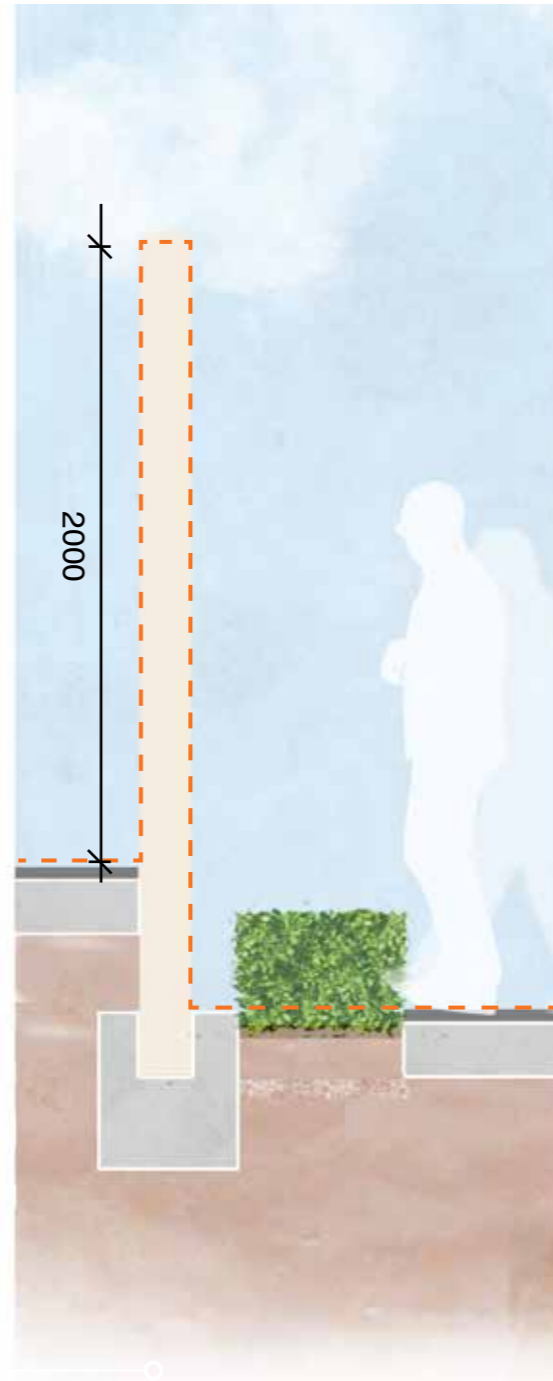
# PROPOSED FENCE

## LEGEND

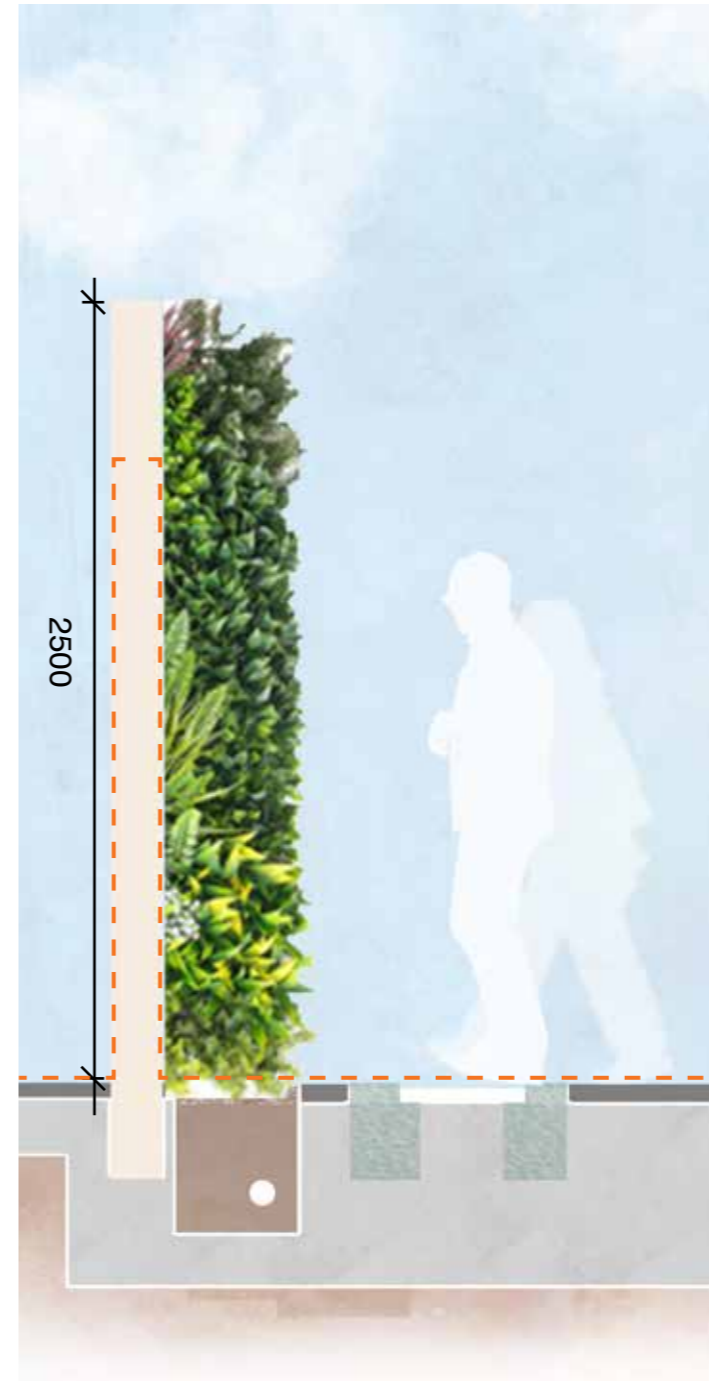
--- Existing



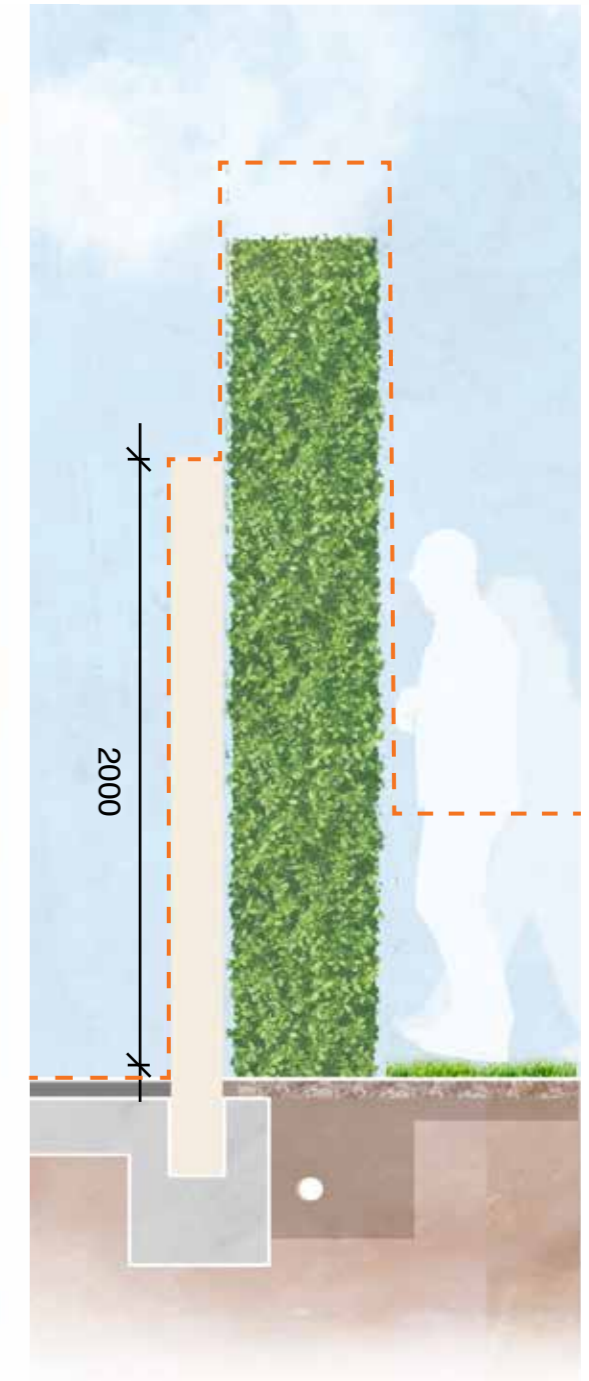
1. South Fence



2. West Fence



3. North Fence



















4. Retained North Fence



# LANDSCAPE PROPOSAL

The landscape establishes a layered contemporary garden that frames the house. Providing a structure space that enables formality and a relaxed garden setting. The garden will become a place for reflection and viewing of the heritage building. The shallow water element will provide reflection and moisture for the green wall proposed to the fence.

## LEGEND

 T1 Existing Tiles	 1 Hedge
 T2 Bluestone Paving	 2 Green Wall
 T3 Garden Stepping Stone	 3 Feature Trees
 Water Feature (max 30cm deep)	 Palms
 Gravel	 Brick Wall
 Turf	 Existing Trees
 Garden Bed	 Proposed Palms
 Deck and Seating	 Potential Garden Artwork





# SECTIONS



01 Section  
Scale 1:100 @A3



02 Section  
Scale 1:100 @A3



03 Section  
Scale 1:100 @A3



# MATERIAL PALETTE

Materials have been chosen to connect with the existing building and be sympathetic in the landscape. The selection of robust and soft materials such as granite stone sets and metal edges elevate the garden to a contemporary experience that compliments the house.

*Material palette to be developed and refined during design development phase.*



**Paving**  
Stone Sets



**Paving**  
Bluestone paving



**Paving**  
Stepping stone



**Paving**  
Bluestone Edge



**Paving**  
Coloured Concrete



**Feature Stone**  
Travertine



**Paving**  
Feature Tile Option



**Paving**  
Metal banding inlay



**ED01**  
Black Planter Edge



**SL01**  
Turf



Stone Garden Bench



**GB01**  
Organic Mulch



**Gravel**  
In-organic Mulch



# PLANTING

## Trees



*Melia Azedarach*



*Elm*

## High-Hedge



*Lilly Pilly (Syzygium)*

## Low-Hedge



*Syzygium*

Planting has been designed to create a lush layered garden. The garden reflects the grandeur of the house. Fruit trees are proposed in part to be espaliered along the proposed fence with the introduction of a mix palette planting approach. The planting scheme also uses hardy robust native species compatible for climate change.

## Trees



*Chamaerops humilis*  
*Dwarf Fan Palm*



*Date Palm (Phoenix canariensis)*



*Palm*



*Crepe Myrtle*

The hedge species *Syzygium* has been selected in two forms to achieve the design intent with two hedge types. It has also been selected due to its drought tolerance once established.

*Planting design to be developed and refined during design development phase.*

## Mix A - Garden Bed



*Allium Purple Sensation*



*Brachyscome multifida*



*Clivia cream yellow*



*Euphorbia characias*



*Goodenia ovata Gold Cover*



*Ficus pumila*



*Dwarf Creeping Fig*

## Creeper



*Kniphofia, Red Hot Poker*



*Loropetalum*



*Ruscus hypoglossum*



*Silene 'White Bells'*



*Trachelospermum jasminoides*





T.C.L