

Heritage Victoria Permit Application P35014 - RFI Response



Collins Street level view from directly in front of the Rialto Building. Dimension showing 18m which is considered the typical field of view for a street level pedestrian.



Heritage Victoria Permit Application P35014 - RFI Response



Collins Street level view from directly in front of the Rialto Building. Perspective expanded beyond human field of view to show more of the proposed tower in context.





Collins Street level view showing the west façade of the Rialto Building. Dimension showing 18m which is considered the typical field of view for a street level pedestrian.



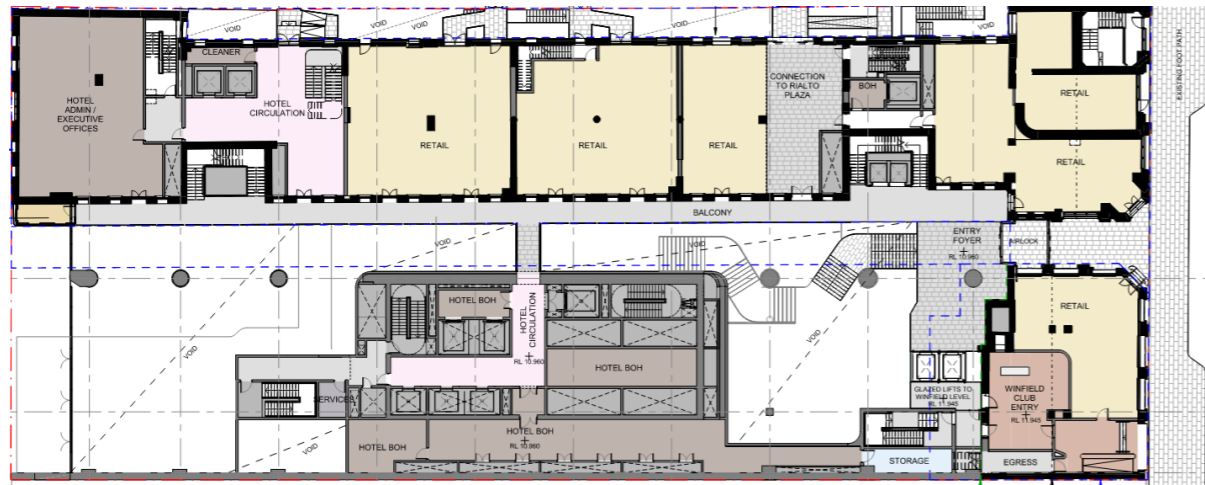
Heritage Victoria Permit Application P35014 - RFI Response



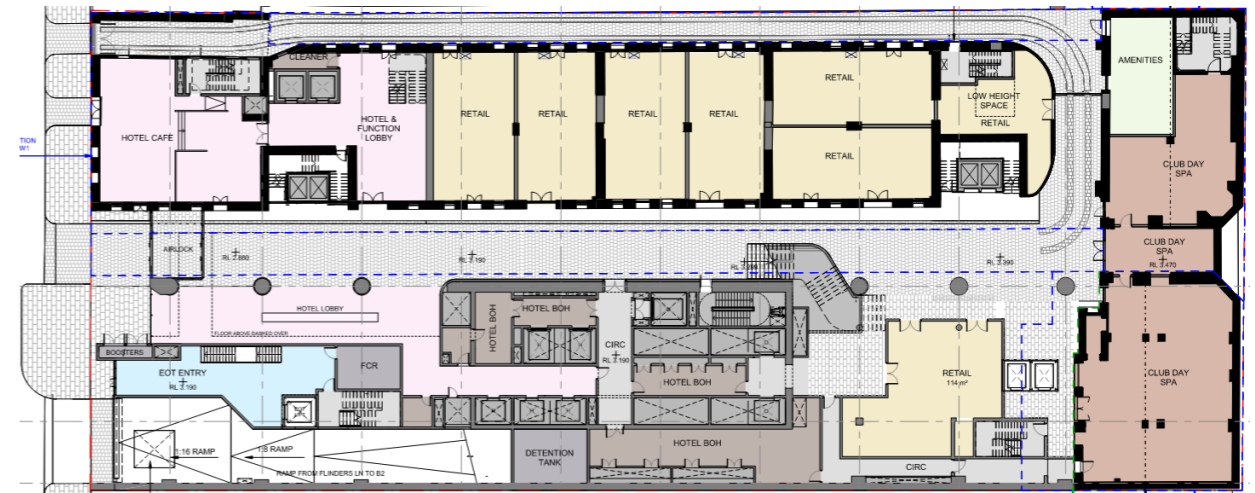
Collins Street level view showing the west façade of the Rialto Building. Perspective expanded beyond human field of view to show more of the proposed tower in context.



Heritage Victoria Permit Application P35014 - RFI Response



Collins Street level plan showing proposed adjusted stair arrangement



Flinders Lane level plan showing adjusted stair arrangement



Lower ground plan showing proposed lowered lobby and adjusted stair arrangement

The connecting stair from Collins Street to Flinders Lane has been adjusted to provide a more direct and legible connection between the streets. The office lobby has been lowered one level to mediate the level difference between Flinders Lane and Collins Street. This will provide an enhanced view back to the Rialto façade from the office lobby and a condition closer to the historic arrangement at Collins Street level.





View to Flinders Lane entrance



View from Flinders lane entrance towards Collins Street



View midway along Winfield Square towards Collins Street





View from stair landing towards Flinders Lane



View from Collins Street entrance showing lowered office lobby



View from office lobby towards Rialto building