

APPENDIX F HISTORIC IMAGES

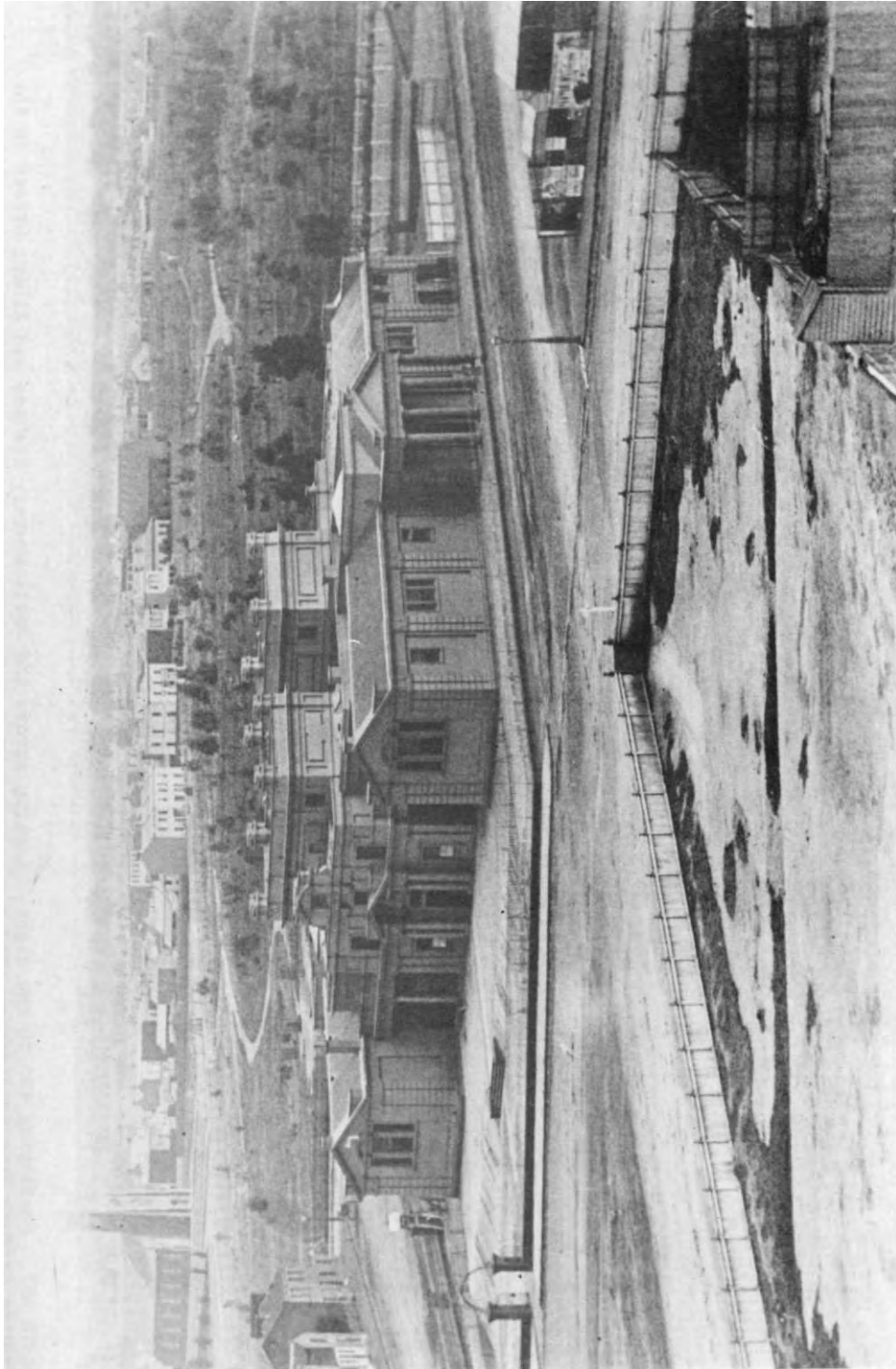


Figure 1 View of the rough paths and early planting in the Carlton Gardens, looking north from Parliament House, 1862.

Source: Reproduced from *Melbourne's Historic Public Gardens: A Management and Conservation Guide*.



Figure 2 Construction of the Dolphin Fountain for Carlton Gardens, designed by Mr Sullivan, 1861-1862.
Source: Picture Collection, State Library of Victoria.

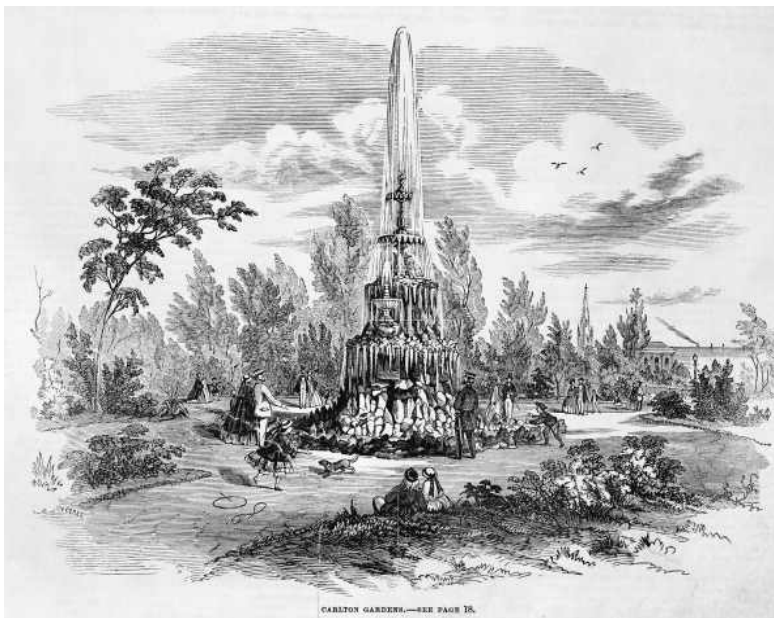


Figure 3 Dolphin Fountain in the Carlton Gardens, 1862.
Source: Picture Collection, State Library of Victoria.



Figure 4 Design for the Melbourne International Exhibition Building, 1878.
Source: Picture Collection, State Library of Victoria.



Figure 5 The Melbourne International Exhibition Building, c. 1880.
Source: Picture Collection, State Library of Victoria.



Figure 6 The Melbourne International Exhibition Building, 1880. Exterior view of the Exhibition Building depicting immature trees and formal garden plantings incorporated within the scheme's broad, interlacing promenades. Source: Picture Collection, State Library of Victoria.



Figure 7 Interior of the Melbourne International Exhibition Building, 1880.
Source: Picture Collection, State Library of Victoria.



Figure 8 The Melbourne International Exhibition, interior under the dome, 1880.
Source: Picture Collection, State Library of Victoria.



Figure 9 The inaugural ceremony at the opening of the Melbourne International Exhibition, 1880.

Source: Picture Collection, State Library of Victoria.



Figure 10 The Exhibition Building's western and southern elevations, with iron palisade garden fence and corner gateway (foreground) supported by decorative hollow cast pillars surmounted by finials, c. 1880.

Source: Picture Collection, State Library of Victoria.



Figure 11 View of the eastern entrance to Melbourne International Exhibition, 1880-1881.
Source: Picture Collection, State Library of Victoria.



Figure 12 The Melbourne International Exhibition, c. 1880-1881, viewed from inside the Carlton Gardens' south-west perimeter; note the Hochgürtel fountain at right.
Source: Picture Collection, State Library of Victoria.



Figure 13 The interior of the main hall, 1880.
Source: Picture Collection, State Library of Victoria.



Figure 14 The lake in the gardens, 1880.
Source: Picture Collection, State Library of Victoria.



Figure 15 The Fernery at the Melbourne International Exhibition, 1880. Note the apsidal Fernery is shown on the ground plan of the International Exhibition. It terminates the Centre Avenue of the temporary annexes, and this illustration depicts the eaves of the Fernery's roof structure, located immediately beyond the entrance.
Source: Picture Collection, State Library of Victoria.



Figure 16 The Fernery, with fountain, 1880 (later known as the French Fountain and relocated to the Eastern Forecourt).
Source: Picture Collection, State Library of Victoria.



Figure 17 The walk from the south-west corner through the Carlton Gardens, c. 1881. Note large eucalypts at left of picture.
Source: Reproduced from *Melbourne's Historic Public Gardens: A Management and Conservation Guide*.

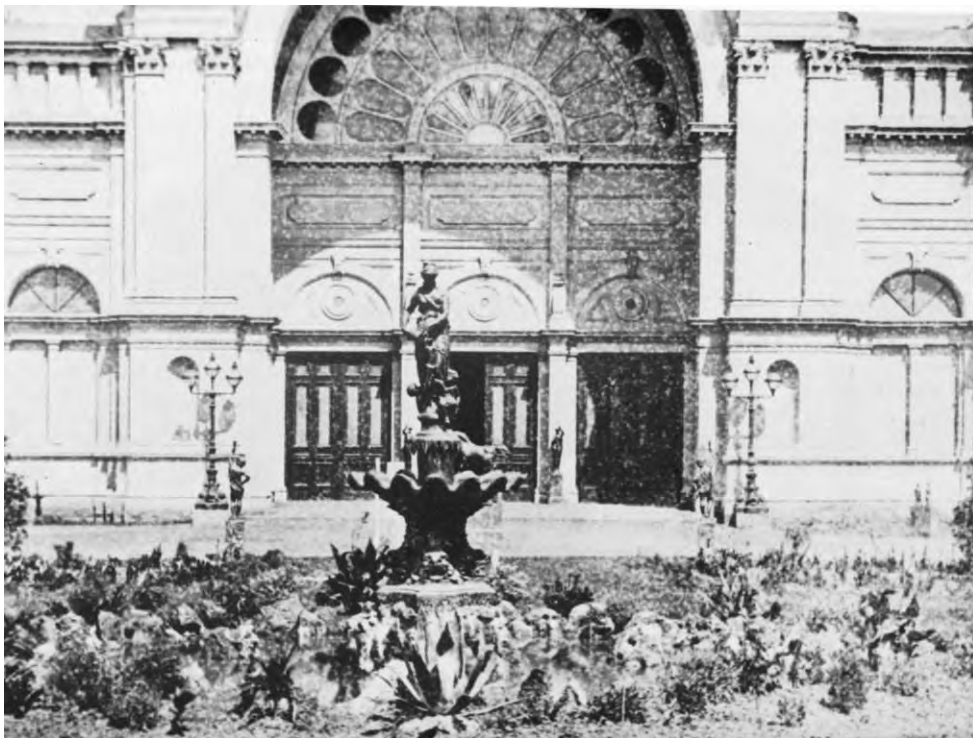


Figure 18 The French Fountain at the east entrance, c. 1881. This fountain was removed in the early 1900s and replaced, apparently with the fountain from the fernery, also referred to by the same name.
Source: Reproduced from *Melbourne's Historic Public Gardens: A Management and Conservation Guide*.

Figure 34 The Exhibition Building by night, 1888. View of the eastern (Nicholson Street) approach, depicting the circular fenced garden enclosure surrounding the French Fountain, and part of the sculpture forecourt, with the Westgarth drinking fountain facing the eastern entrance.

Source: Picture Collection, State Library of Victoria.



Figure 35 Exhibition Building viewed from the south-east for the Centennial Exhibition 1888-9.

Source: Picture Collection, State Library of Victoria.



Figure 36 The Exhibition Building, n.d. Elevated view of the Carlton Gardens, showing the southern and eastern facades, Eastern Annexe, and column representing Australian gold, installed outside the southern entrance for the 1888-9 Centennial Exhibition.

Source: Picture Collection, State Library of Victoria.