

# JOHN PATRICK LANDSCAPE ARCHITECTS

St Mary's Church, 428 Queensberry Street, North Melbourne | December 2023

## LANDSCAPE CONCEPT



# ST MARY’S CHURCH

## 428 QUEENSBERRY STREET, NORTH MELBOURNE

### LANDSCAPE CONCEPT

INTRODUCTION	3
EXISTING SITE CONDITIONS	4
LANDSCAPE DESIGN - CONCEPT PLAN	5
MATERIAL AND FURNITURE PALETTE	6
PLANTING PALETTE	7



# INTRODUCTION

John Patrick Landscape Architects have been engaged to prepare a Landscape Design for the garden area in the Howard Street Frontage of St Mary’s Church, North Melbourne.

**The Brief**

- Level the lawn area to allow for flexible uses.
- Make the lawn accessible from the main entrance to the rear of the church and from the street.
- Refresh the gravel areas around the building
- Protect the character of the church and focus attention to the East Window when viewed from the street.
- Protect and enhance the existing Moreton Bay Fig.
- The garden design should be sympathetic and emphasise the character of St Mary’s Church.
- Work within the budget to deliver the proposed works.
- Scope to include only the Howard Street frontage garden area.



1. Recently renovated formal garden on Queensberry Street
2. Existing Moreton Bay Fig
3. Sloped lawn area on Howard Street frontage, showing cut in ground
4. Howard Street gate
5. Church entrance facing Queensberry Street



# EXISTING SITE CONDITIONS

## CONSTRAINTS AND OPPORTUNITIES

The Church gardens can be broken roughly into four parts. The Driveway/entry area, Formal garden (South), Garden/Entry (North) and the Howard Street garden.

Within the Howard Street frontage there is a large Moreton Bay Fig which dominates the southern half and corner of the frontage. The lawn area to the north of this falls directly and consistently towards the adjacent Vicarage. Works have been carried out to reduce the level of the ground directly surrounding the church and to improve the drainage in these areas with additional storm water drainage. The extent of these works is directly visible in the form of embankments.

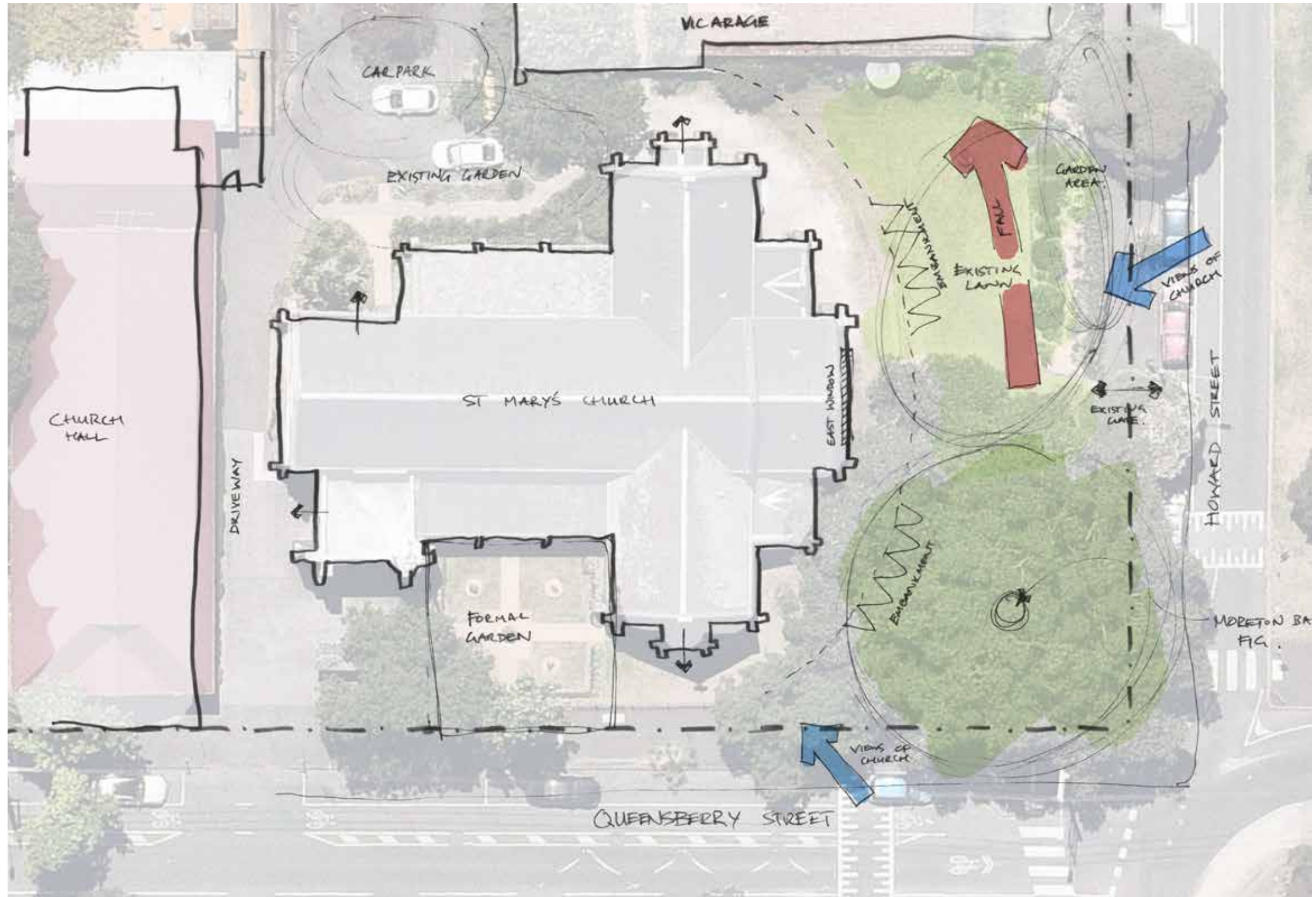
Views of the church are maintained from Howard Street and there is an existing gate aligned with the stained glass east window. The garden bed has a range of plants but none of these appear to be related to the original church yard garden design. There are large clusters of Agapanthus which are reflective of the era of garden design but appear to have been included in later years of the church's history.

### Constraints

- Existing Moreton Bay Fig with large Tree Protection Zone
- Heritage fencing along boundary
- Level difference between church entrances and Howard Street
- Material palette must tie into existing heritage setting

### Opportunities

- Enhance presence of church when viewed from Howard Street
- Improve useability of lawn area
- Improve accessibility across garden
- Formalise the garden setting of the church
- Supplement the existing planting with additional heritage plants



EXISTING CONDITIONS PLAN  
NTS



# LANDSCAPE DESIGN

## CONCEPT PLAN





# MATERIAL AND FURNITURE PALETTE



- 1. Floating bluestone steps with rough riser
- 2. Bluestone paving
- 3. Zam steel galvanised edging
- 4. Retaining wall with varied width bond
- 5. Vibrant heritage planting
- 6. Oval lawn with defined edge
- 7. Vertical picked stone surface to reference finish of church stonework
- 8. Etched bluestone memorial engraving
- 9. Bluestone pitchers create formal edging



# PLANTING PALETTE



1. Abelia x grandiflora
2. Arthropodium cirratum
3. Bergenia cordifolia
4. Cotinus corrygia 'Grace'
5. Hydrangea paniculata 'Sundae Fraise'
6. Magnolia Grandiflora 'Exmouth'
7. Raphiolepis indica 'Snow Maiden'
8. Raphiolepis umbellata
9. Rothmannia globulosa
10. Salvia leucantha 'Santa Barbara'
11. Sarcococca ruscifolia
12. Viburnum suspensum
13. Viburnum tinus



# PLANTING PALETTE



1. Achillea 'Credo'
2. Beschorneria yuccoides
3. Conostylis 'Silersunrise'
4. Chryscephalum apiculatum
5. Nepeta 'Six Hills Giant'
6. Phlomis fruticosa
7. Poa labillardieri 'Eskdale'
8. Rosmarinus officinalis 'Tuscan Blue'
9. Salvia leucantha 'Santa Barbara'
10. Stachys Byzantia
11. Veronia umbrosa 'Georgia Blue'



# PLANTING PALETTE



1. Acacia cognata 'Mini Cog'
2. Banksia marginata
3. Banksia spinulosa 'Birthday Candles'
4. Carex 'Feather Falls'
5. Casuarina glauca 'Cousin It'
6. Convolvulus sabatius
7. Cycas revoluta
8. Dichondra 'Emerald Falls'
9. Fatsia japonica
10. Helleborus niger
11. Ligularia reniformis
12. Lomandra longifolia 'Tanika'
13. Parthenocissus sikkimensis
14. Veronica perfoliata



# PLANTING PALETTE



- 1. Agapanthus 'Guilfoyle'
- 2. Hydrangea quercifolia 'Sikes Dwarf'
- 3. Liriope muscari 'Just Right'
- 4. Ophiopogon jaburan
- 5. Sarcococca confusa
- 6. Rhamphiolepis indica 'Snow Maiden'